

DP20说明书

材质：105g铜版纸

颜色：双面彩印

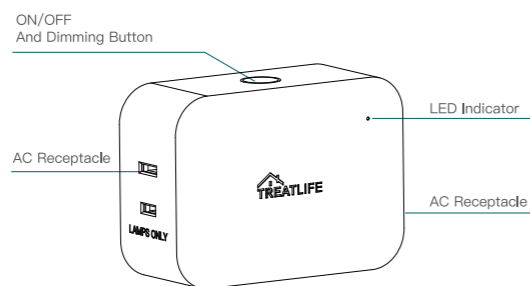
尺寸：400x120mm(4折5页)



USER MANUAL DP20

Need Help?
 ✉: Support@treatlife.tech
 Tech Support:www.treatlife.tech/pages/support

01 | PRODUCT OUTLINE



02 | INDICATOR LIGHT STATUS

Light Color	Light Status	Switch Status
Red	Steady (For 3 minutes)	Low power initial state
	Blink rapidly (2 times per second)	Ready for default configuration mode
	Blink slowly	Ready for AP (Access Point) configuration mode
White	ON	Power ON
	OFF	Power OFF

03 | BUTTON DEFINITION

- Press the ON/OFF button 3 times continuously, the red indicator light blinks rapidly (twice/1s) to initiate the default configuration mode.

- In default configuration mode, press the ON/OFF button 3 times continuously to initiate AP mode.
- Gently press the ON/OFF button to turn the light ON/OFF.
- Long press the ON/OFF button to increase the brightness of your light. Stepless dimming (1% to 100% brightness completed in 5.5s).
- Long press the ON/OFF button to decrease the brightness of your light. Stepless dimming(100% to 1% brightness completed in 5.5s).

04 | Add Devices

1.Download the TreatLife APP



Please scan the QR code or search "Treatlife" on the Apple APP Store /Google Play to download the APP.

2.Registration or Log In

Tap "Register" to create an account. Enter your email address to get a verification code and create a password. Or, choose "Log in" if you already have a TreatLife account.

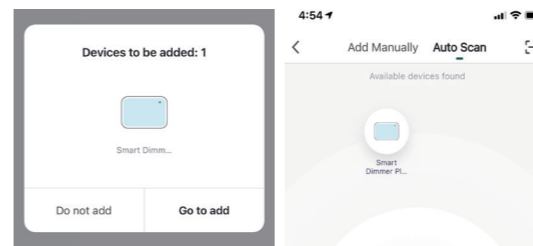
3.Configure the APP to the dimmer plug

Preparation: Ensure the dimmer plug is connected to power; Ensure your phone is connected to your WiFi router and is able to connect to the internet.

Note: This dimmer plug only supports 2.4GHz networks. If you connected to a 5GHz network before, please switch to the 2.4GHz Network

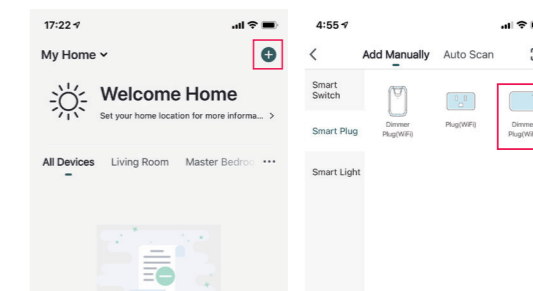
05 | Bluetooth Mode (Automatic Mode)

- First, turn on the phone's Bluetooth.
- Plug in the device and ensure it is receiving power.
- Press the ON/OFF button 3 times continuously, red indicator light blinks quickly (2 times per second).
- Open the "TreatLife" APP and it will find the Treatlife dimmer plug automatically.
- If the dimmer plug is not automatically discovered, click the "+" at the top right list and select Auto Scan to automatically search for the dimmer plug.
- Follow the steps in the APP to complete the pairing.



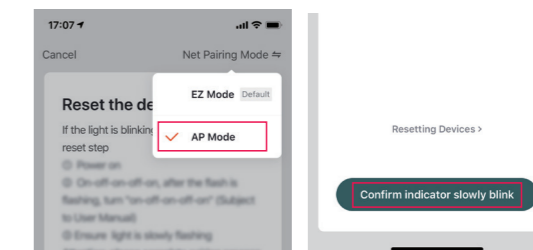
06 | EZ Mode (Manual Mode)

- Click the "+" symbol on the upper right corner of the device list, and select "dimmer plug" in "Smart Plug" options.
- Press the ON/OFF button 3 times continuously, red indicator light blinks quickly (2 times per second).
- Tap "Confirm indicator rapidly blink"; Enter your Wi-Fi Password; Wait for the dimmer plug to complete the connection.

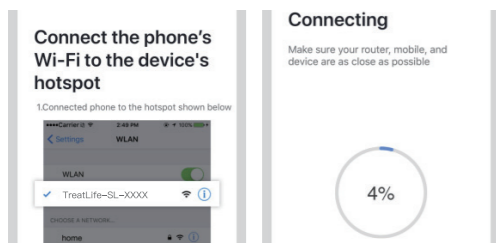


07 | AP Mode

- If you can not configure the dimmer plug successfully with the default mode, please try to connect with AP Mode.
- Tap "AP Mode" on the top right corner.
- In default configuration mode, press the ON/OFF button 3 times continuously, the red indicator light blinks slowly (once every 3 seconds).
- Tap "Confirm indicator slowly blink".



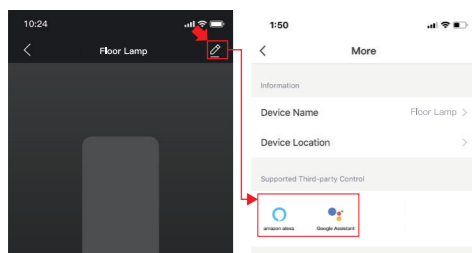
- Enter your Wi-Fi Password.
- Open WLAN settings; the Wi-Fi settings on your phone and connect to the "TreatLife-SL-xxx" network.
- Go back to the APP and continue to add the device then wait for the connection to complete.



08 | Link "TreatLife" to Alexa / Google Assistant

- Go to TreatLife > More for instructions to link Alexa/Google Assistant.

Note: Please log in with your TreatLife account.



09 | Key Steps to Link the Alexa Skill

- Click the Alexa icon, sign in with your Amazon account, and open the "Alexa Skills" link from the "Echo & Alexa" menu.
- Search for the "TreatLife", and tap "Enable".
- Enter your "TreatLife" APP Account and Password, then tap "Link Now" to enable the Skill.

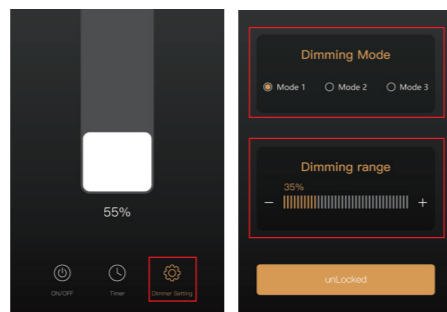
10 | Lights are too bright though dimming to the minimum level

- Go to Dimmer Setting to adjust dimming range with desired brightness.



11 | Lights are flickering

- Go to Dimmer Setting to switch mode and adjust dimming range until it stops flickering.



12 | SPECIFICATION

Model	DP20
Input Voltage	120V AC,60Hz
Max Power	300W
Wireless Frequency	2.4GHz
Wireless Standard	IEEE802.11 b/g/n
Support System	Android 4.1 and above or iOS 8.0 and above
Max Output	300W INC
	150W CFL 150W LED

13 | TROUBLESHOOTING

Can't connect to the APP.

- Please finish the pairing within 3 minutes when the red indicator starts blinking. (Refer to "Me-FAQ&Feedback" in the APP)
- If your router is 2.4GHz & 5GHz dual-band, the 2.4GHz band may not be turned on. Please enter the router settings to turn on the 2.4GHz band. You can check the router's manual or contact the router's official support for help.
- Make sure you entered the correct WIFI password.

The smart plug shows the wrong status in the APP.

- The network may be delayed or the network signal is weak. Try to move the router closer to the Plug or power off the router and then power it on. If it still doesn't work, try to replace the light bulb with a different model or brand.

Can't connect to Alexa.

- Check whether the Alexa APP is correctly configured with the account of TreatLife APP. Refer to the manual instruction or "Me-FAQ&Feedback-All-Third-party control issues" in APP to reconnect to Alexa.

The Timing function doesn't work properly.

- Remove the switch from APP, and repair the switch to APP again; You can also check Me-> FAQ & Feedback information in the APP. If it still doesn't work, please provide the Virtual ID in the APP to us.

FCC Caution:

This device complies with part 15 of the FCC Rules. Operation is subject to the following two conditions: (1) This device may not cause harmful interference, and (2) this device must accept any interference received, including interference that may cause undesired operation.

Any Changes or modifications not expressly approved by the party responsible for compliance could void the user's authority to operate the equipment.

Note: This equipment has been tested and found to comply with the limits for a Class B digital device, pursuant to part 15 of the FCC Rules. These limits are designed to provide reasonable protection against harmful interference in a residential installation. This equipment generates uses and can radiate radio frequency energy and, if not installed and used in accordance with the instructions, may cause harmful interference to radio communications. However, there is no guarantee that interference will not occur in a particular installation. If this equipment does cause harmful interference to radio or television reception, which can be determined by turning the equipment off and on, the user is encouraged to try to correct the interference by one or more of the following measures:

- Reorient or relocate the receiving antenna.
- Increase the separation between the equipment and receiver.

-Connect the equipment into an outlet on a circuit different from that to which the receiver is connected.
 -Consult the dealer or an experienced radio/TV technician for help

FCC Radiation Exposure Statement:

This equipment complies with FCC radiation exposure limits set forth for an uncontrolled environment. This equipment should be installed and operated with minimum distance 20cm between the radiator& your body.

RSS (Category I Equipment):

This device complies with Innovation, Science, and Economic Development Canada's licence-exempt RSS standard(s). Operation is subject to the following two conditions:

- (1) this device may not cause interference, and
- (2) this device must accept any interference, including interference that may cause undesired operation of the device.

Le présent appareil est conforme aux CNR d' Innovation, Sciences et Développement économique Canada applicables aux appareils radio exempts de licence. L'exploitation est autorisée aux deux conditions suivantes :

- (1) l'appareil n'émet pas de brouillage, et
- (2) l'utilisateur de l'appareil doit accepter tout brouillage radioélectrique subi, même si le brouillage est susceptible d'en compromettre le fonctionnement.

The device is compliance with RF exposure guidelines, users can obtain Canadian information on RF exposure and compliance. The minimum distance from body to use the device is 20cm. Le présent appareil est conforme Après examen de ce matériel aux conformité ou aux limites d'intensité de champ RF, les utilisateurs peuvent sur l'exposition aux radiofréquences et la conformité et compliance d'acquérir les informations correspondantes. La distance minimale du corps à utiliser le dispositif est de 20cm.