

N-055 ML300说明书 2021.7.15
材质:128克铜板,正反彩色印刷,中间两颗骑马钉
尺寸:140x140mm

ML300 Studio Strobe Light
Instruction Manual

NEEWER®

About This Manual

Thank you for purchasing the NEEWER® ML300 Studio Strobe Light. The manual will cover the following:

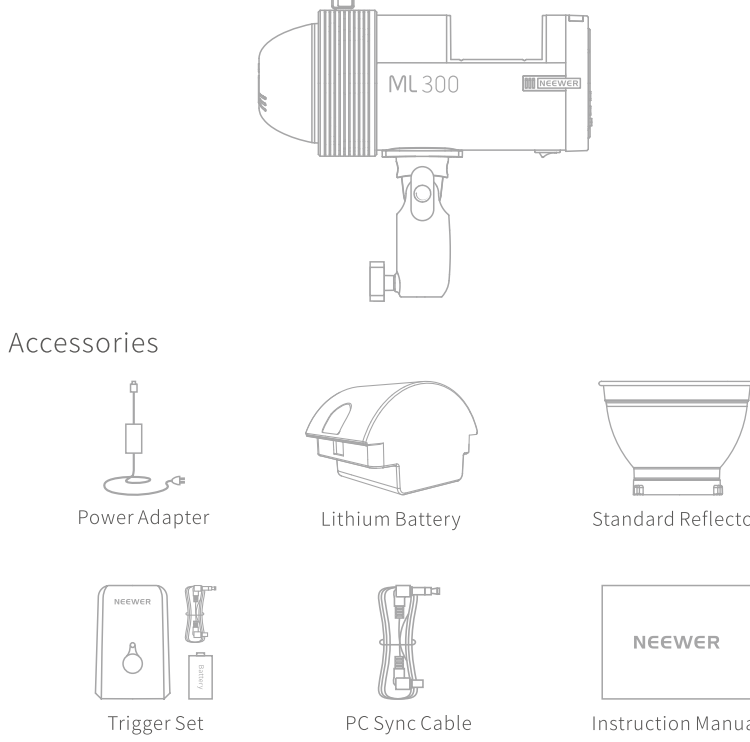
- the basic operation procedures and functions of the light.
- the application environment and safety use of the light.
- the installation of the accessories of the light.

WARNING: The light must work with the original power adapter within the product package, otherwise the product will be easily damaged.

Table of Contents

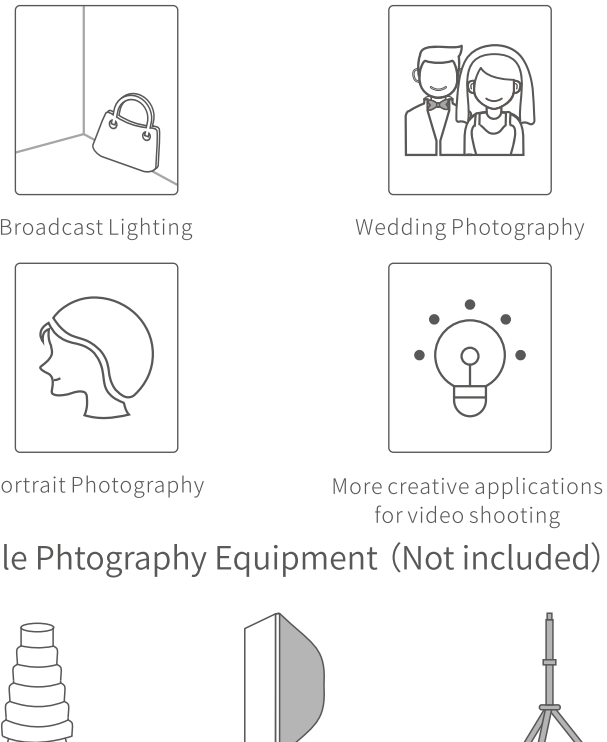
1.Package Contents	1
2.Applications	2
3.Compatible Photography Equipment	2
4.Nomenclature	3
5.Power Supply	5
6.Function Mode	6
7.Connect the strobe to the stand and umbrella	10
8.Flash Tube Replacement	11
9.Safety Notes	13
10.Precautions	14
11.Maintenance	14
12.Product Parameters	15

1.Package Contents



Upon receiving the package, please check whether all the items are included. If there is any missing or broken items, please contact NEEWER Customer Service (support@neewer.com).

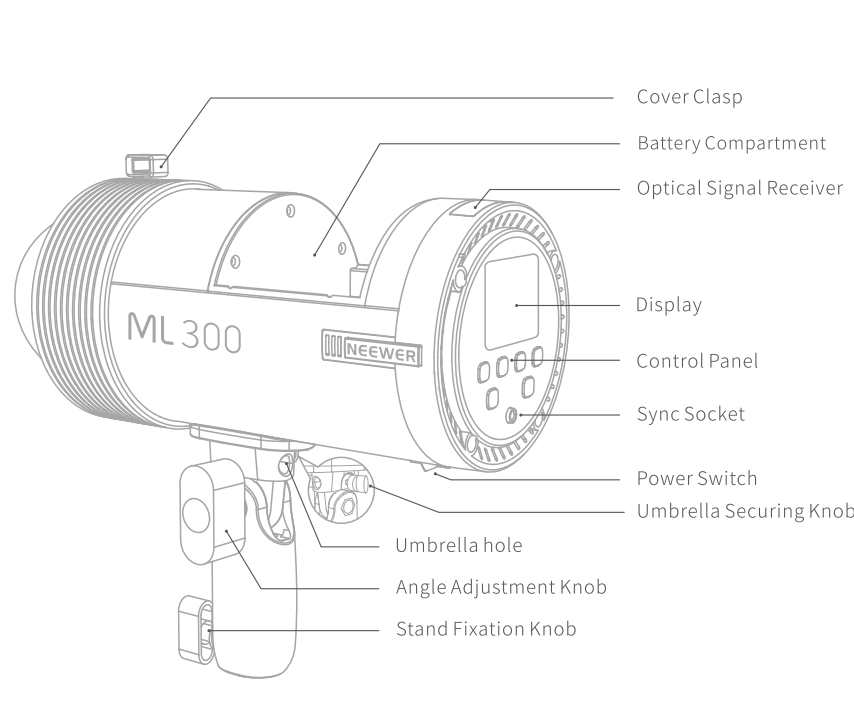
2.Applications



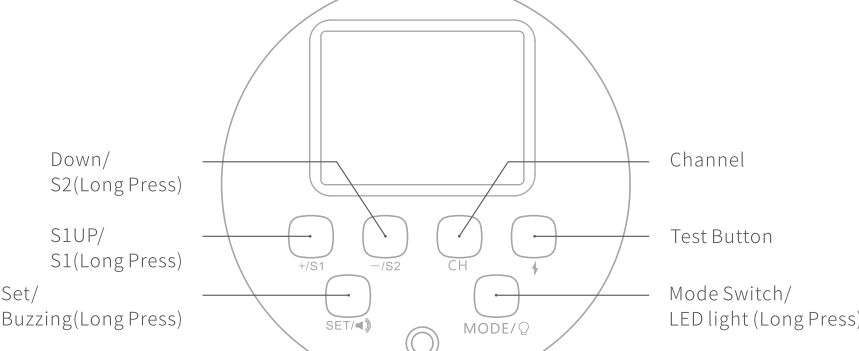
3.Compatible Photography Equipment (Not included)



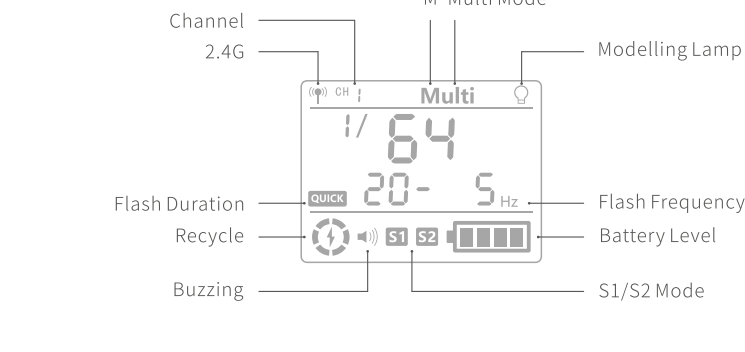
4.Nomenclature



Control Panel

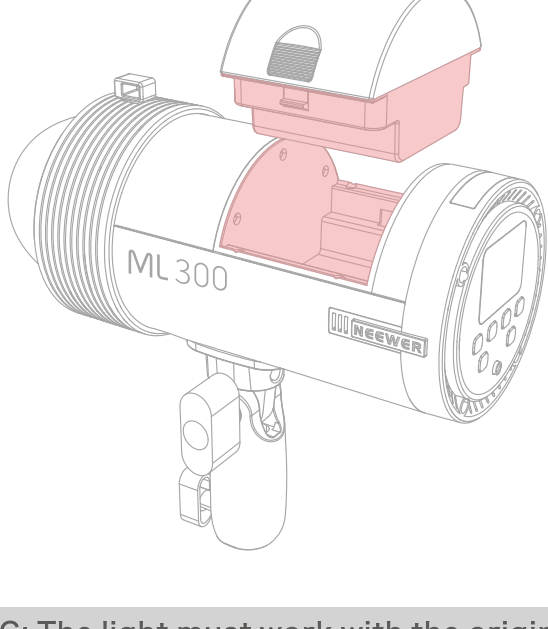


Display



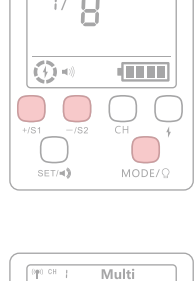
5.Power Supply

Via batteries

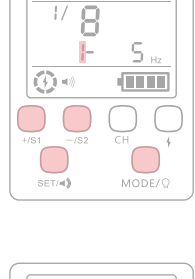


WARNING: The light must work with the original power adapter within the product package, otherwise the product will be easily damaged.

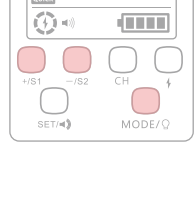
6.Function Mode



Manual
Press the "MODE" button until the letter "M" appears on the display, then press the "*/S1" or "*/S2" button to change the flash output power (ranging from 1/64 to 1/1).



Stroboscopic Flash (Multi)
In the stroboscopic flash mode, a series of rapid flashes will be triggered to shoot multiple successive movement of multiple objects within a single picture. You can set the flash output, number of flashes, and flash frequency (number of flashes per second = 1/s) according to your requirements. Multiple flashes in a single exposure is commonly adopted by photographers (with 20 flashes and the flash frequency of 1/100s).
Press the "MODE" button until the word "Multi" shows on the display. Then press the "Set" button until number "1" shows blinking. Next, press the "*/S1" or "*/S2" button to change flash power.



Quick Flash Duration
Press the "MODE" button until the word "Quick" appears on the display. Then press "*/S1" or "*/S2" button to select the flash duration from F1 (1/1000s), F2 (1/2000s), F3 (1/3000s), F4 (1/4000s), F5 (1/5000s), F6 (1/6000s), F7 (1/7000s), F8 (1/8000s), F9 (1/9000s) to FP (1/10000s).

Optical Flash Mode: S1

The S1 and S2 functions are applicable in all modes. Press the "*/S1" button for 2 seconds until the symbol "S1" appears on the display. In S1 mode, the strobe light can act as a slave flash for different illumination effects, but the master flash should be set at manual flash. The flash will be triggered simultaneously by the first flash of the master flash unit, working just like a remote trigger.

Optical Flash Mode: S2

To enter the S2 mode, press the "*/S2" button for 2 seconds until the symbol "S2" appears on the display. In this mode, the strobe light acts as a slave flash. It can prevent pre-flash and work in TTL. It will operate on the second flash of the master flash unit.

Test Flash

You can press the "Test" button to test the flash function of the strobe light.

Optical Flash Mode: S1

The S1 and S2 functions are applicable in all modes. Press the "*/S1" button for 2 seconds until the symbol "S1" appears on the display. In S1 mode, the strobe light can act as a slave flash for different illumination effects, but the master flash should be set at manual flash. The flash will be triggered simultaneously by the first flash of the master flash unit, working just like a remote trigger.

Optical Flash Mode: S2

To enter the S2 mode, press the "*/S2" button for 2 seconds until the symbol "S2" appears on the display. In this mode, the strobe light acts as a slave flash. It can prevent pre-flash and work in TTL. It will operate on the second flash of the master flash unit.

Test Flash

You can press the "Test" button to test the flash function of the strobe light.

Buzzing Sound duration

You can turn on/off the buzzing sound by pressing the "Set" button for two seconds. When the modelling lamp is on for 60 seconds, it will switch off automatically. You will need to press the button again to turn it back on.

Modelling Lamp

You can turn on/off the modelling lamp by pressing the "Modelling Lamp" button for two seconds. When the modelling lamp is on for 60 seconds, it will switch off automatically. You will need to press the button again to turn it back on.

2.4G wireless trigger

Press the "CH" button until the number "1" flickers on the display. Then you can press the "*/S1" or "*/S2" button to switch between different channels. (The light includes built-in 2.4G radio receiver with 16 channels).

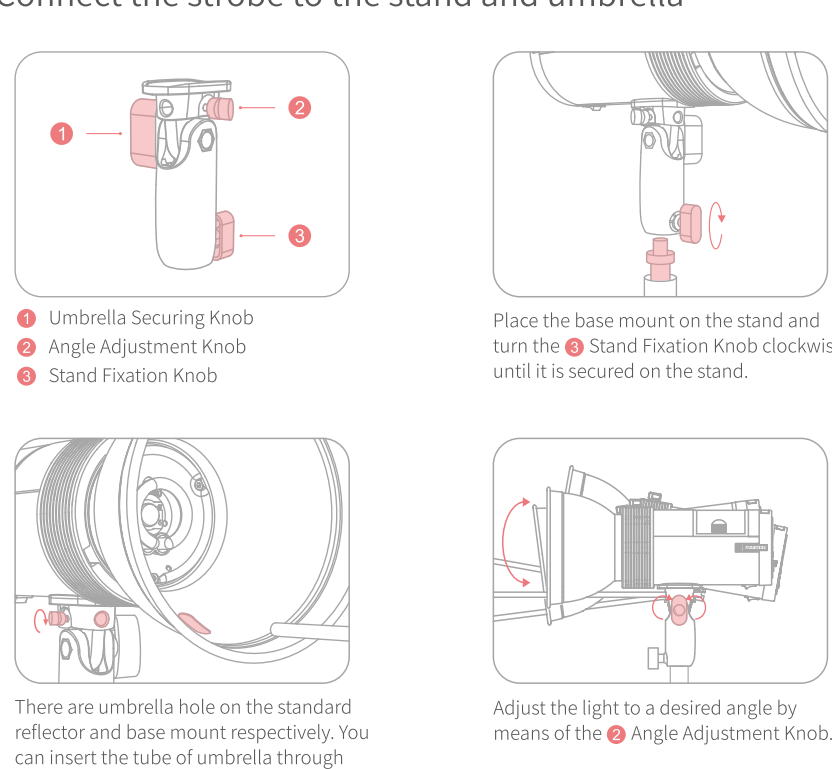
Note: Please set the ML300 studio flash and VC-816TX radio trigger at the same channel, the studio flash can be only triggered.

Code Pairing Demo of the Strobe's Built-in Receiver and Trigger

Channel Number	Flash Channel	Trigger Code
0	CH 0	0000
1	CH 1	0001
2	CH 2	0002
3	CH 3	0003
4	CH 4	0004
5	CH 5	0005
6	CH 6	0006
7	CH 7	0007
8	CH 8	0008
9	CH 9	0009
10	CH 10	0010
11	CH 11	0011
12	CH 12	0012
13	CH 13	0013
14	CH 14	0014
15	CH 15	0015

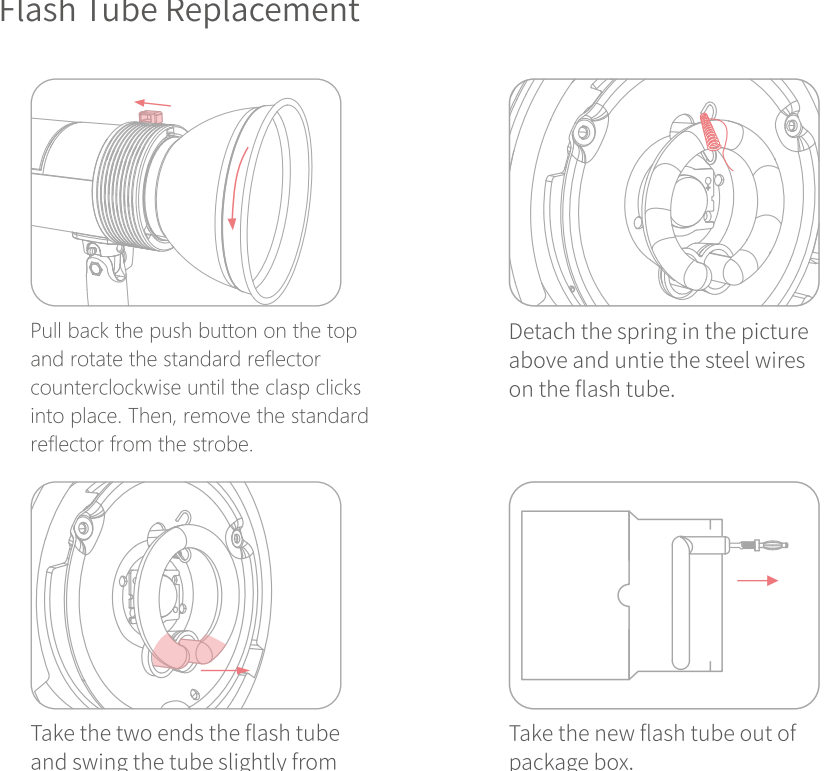
On the VC-816TX radio trigger, the code from left to right is 1,2,3,4.

7.Connect the strobe to the stand and umbrella

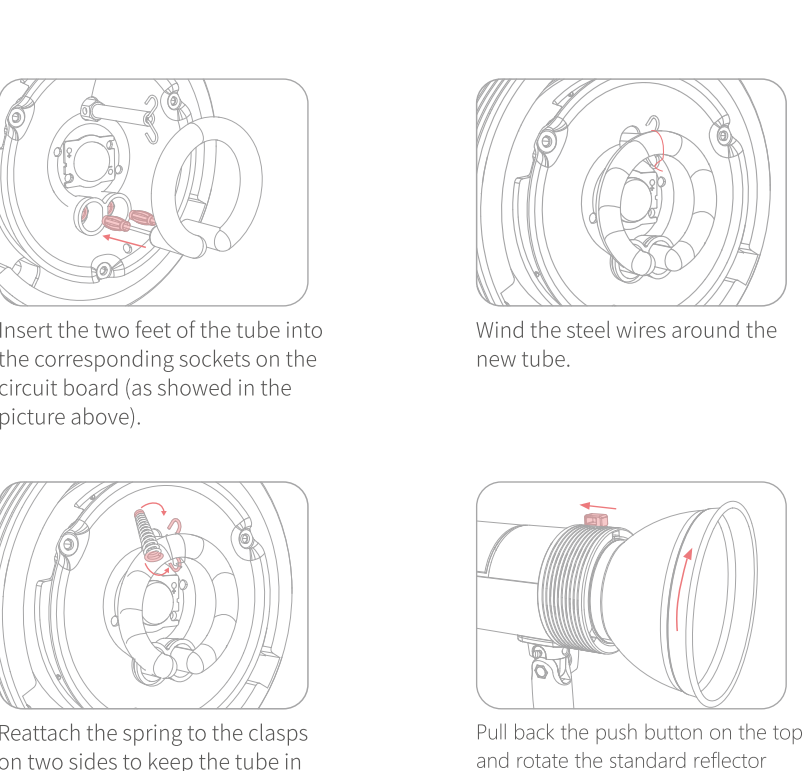


The aforementioned umbrella isn't included in the package. Please reorder. Possibly with: Please note, the umbrella is not included. Thank you for your understanding.

8.Flash Tube Replacement

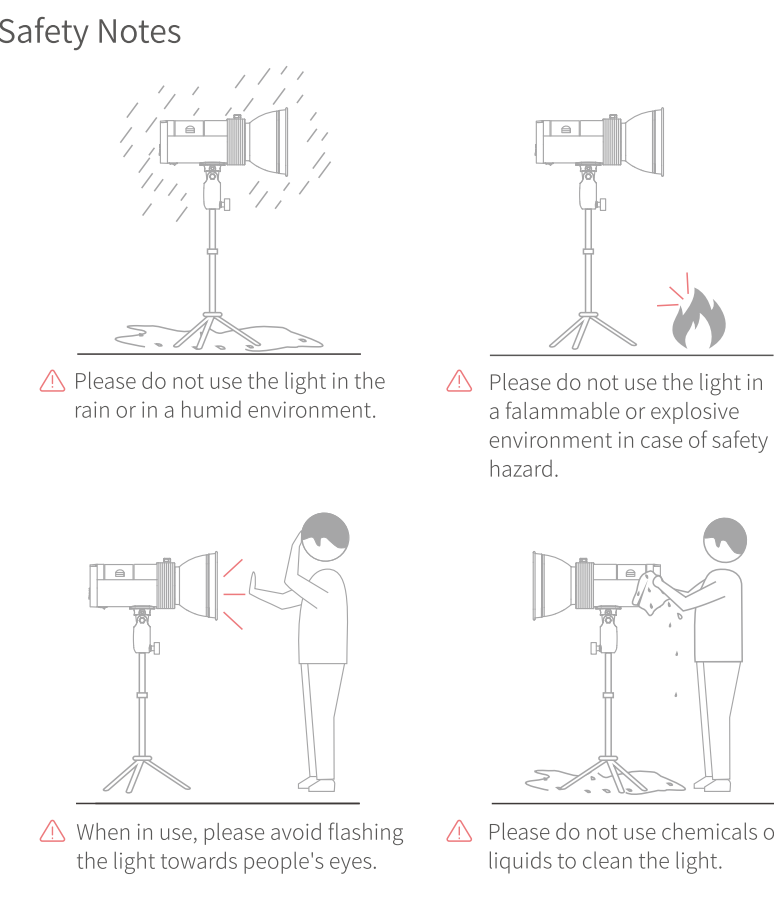


Warning: Please make sure that the strobe light is turned off before changing the modelling bulb and flash tube. Insulating gloves are required as well.



To avoid hand injury, tweezers are recommended to remove the spring and steel wire.

9.Safety Notes



10.Precautions

- Please avoid flashing the light toward moving cars on the road, otherwise it might cause traffic accidents.
- Please don't dismantle or change the light to avoid product damage and human injury.
- Children are forbidden to touch the light.
- Please don't touch the hot parts of the light with your hand when in use.
- Please avoid touching the light with wet hands when it is being charged.
- After flashing 30 times consecutively at maximum power, please cool the light off for 3 minutes, otherwise there might be risk of product damage.
- If used together with flammable accessories, the modelling lamp can't be kept on for more than 10 minutes. If it is on for over 10 minutes, please cool it off for 1 minute before turning it back on.
- Please be careful about the flash tube or modelling lamp as they break easily.
- When the snoot is placed on the light, please avoid keeping the modelling lamp on for too long or flash too frequently (no more than 6 flashes at full power in one minute), otherwise accumulated heat might damage the flash housing or modeling lamp.
- Please wear insulating gloves to change the modelling lamp or flash tube.
- Please switch off the light when not in use.

11.Maintenance

- (1) If there is any abnormality with the light when in use, please turn off immediately and contact professionals to examine the possible cause.
- (2) Please avoid vibrations in the light body and dust the light surface regularly.
- (3) It is a natural phenomenon for the light to warm up when in use. Please avoid consecutive flash unless for special circumstances.
- (4) Please do not move the light until it is switched off.
- (5) As flash tube and modelling lamp break easily, they are not covered under warranty.
- (6) Soft cloth is recommended to wipe the strobe light body.
- (7) Please don't overhaul the strobe light unless professionally certificated, or it will void the one-year warranty.

12.Product Parameters

Model	ML300
Flash Output Power	300W
Guide Number(1M, ISO100) 1/4	60
Standard Reflector SF-610	
Flash Power Range	1/1-1/64
Recycle Time	2.55(at max power), 0.45(at min power)
Flash Duration at Max Power	1/200S
Flash Duration	F1 1/1000S, F2 1/2000S, F3 1/3000S, F4 1/4000S, F5 1/5000S, F6 1/6000S, F7 1/7000S, F8 1/8000S, F9 1/9000S, FP 1/10000S
Modelling Bulb	LED13W,1370LUX
Color Temperature	5600K±200K
Trigger Voltage	5V low voltage triggering
Trigger Frequency	with built-in 2.4GHz, it supports 20M exact triggering
Trigger Mode	Sync Cable, Optical Signal, Remote Trigger, Test Button
Flash Tube	detachable tube (replaceable)
Protection Mechanism	overheat protection, low-voltage cut-off protection
Number of Flashes at Max Power	1000 shots
Battery	Lithium Battery
Battery Capacity	10.8V 7800mAh
Charging Method	plug-in charger
Charger Voltage	AC100-240V or DC12V
Charging Time	5 hours
Dimension	112x228.5mm
Weight	2.2KG



Official Home Page Customer Service
The actual product may differ from the picture in this manual in color and appearance.
www.neewer.com

pantone: 白色 Cool
灰色 Cool Gray 8 c
灰色 Cool Gray 6 c
粉色 177 c

2021.7.15