

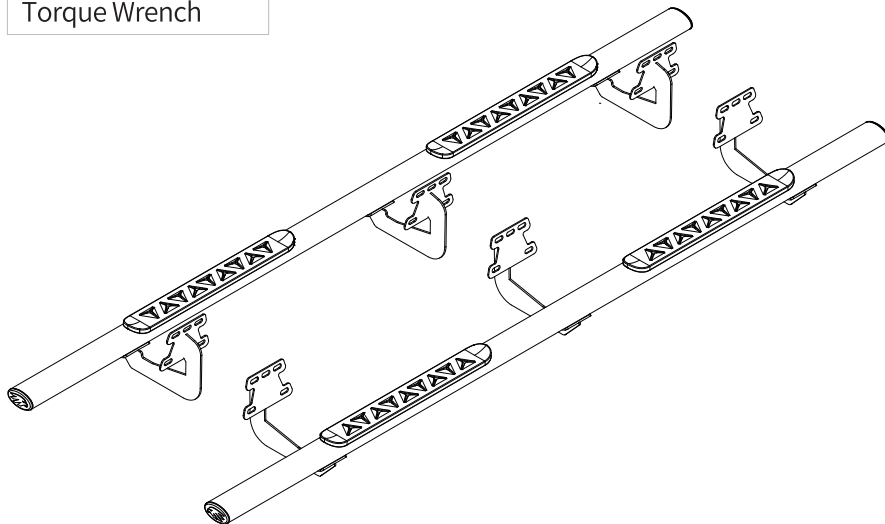
Tools Required

13mm Socket

Ratchet

Torque Wrench

CEETSS-0056



Notes

Read this instruction carefully before starting installation.

Proper tools will improve the quality of installation and reduce the time required.

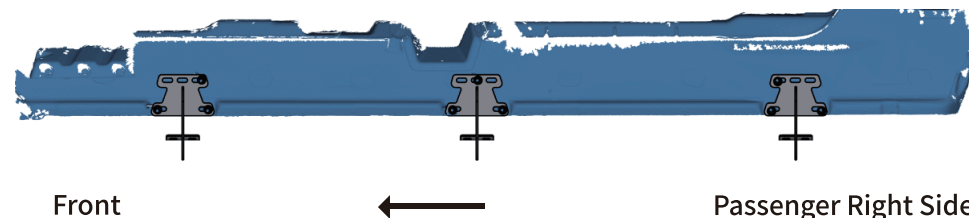
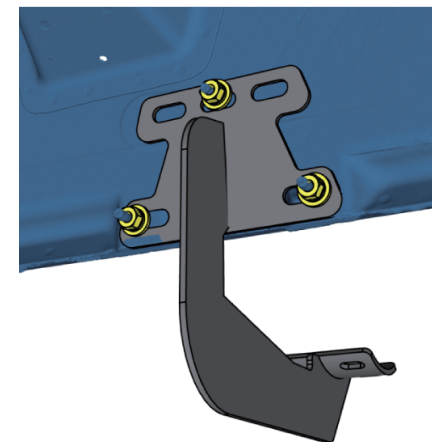
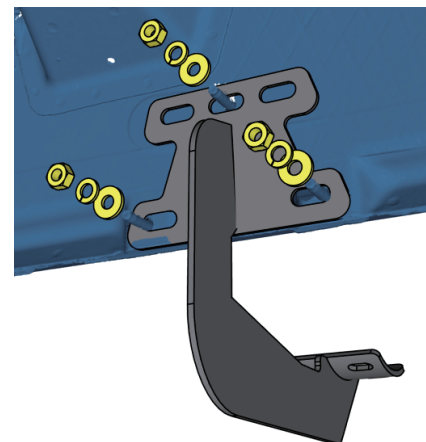
If missing parts or any damage found, please take a picture, and contact us.

Step 1:

1. Locate (3) mounting positions each side.
2. Clean factory painting on mounting studs before installation.
3. Clean the sealant and dirt around mounting positions.

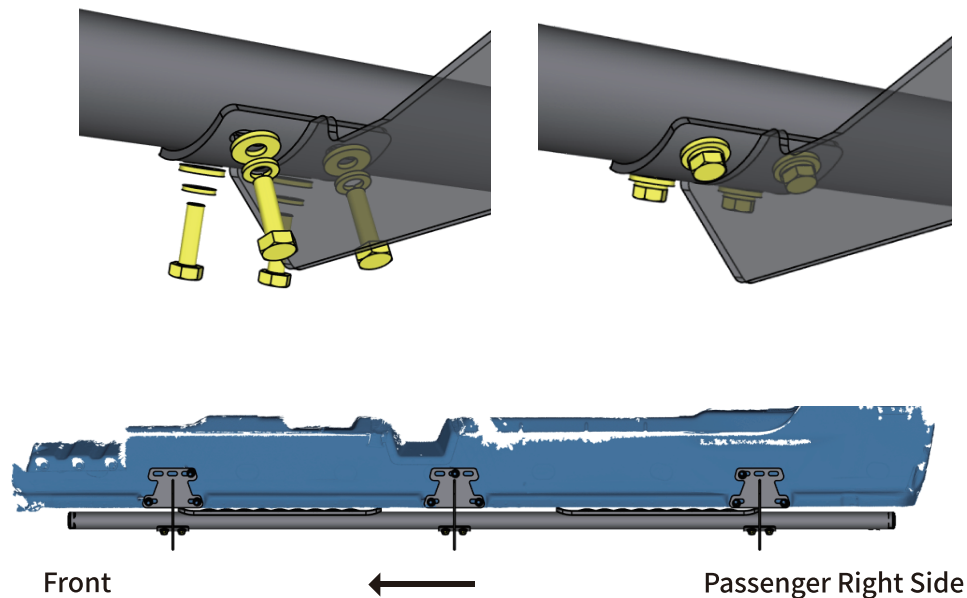
Step 2:

1. Attach the bracket to the factory studs on inner rocker panel.
2. Secure the bracket to inner rocker panel with (3) M8 flat washers, (3) M8 lock washers, (3) M8 hex nuts.
3. Repeat to install remaining brackets, do not fully tighten.



Step 3:

1. With assistance, lift and place the step bar to the support brackets.
2. Secure the step bar on support brackets with (12) M8 hex bolts, (12) M8 flat washers, (12) M8 lock washers.



Step 4:

1. Tighten M8 hex nuts on vehicle with 15 ft-lbs. torque.
2. Adjust the step bar and tighten M8 hex bolts and nuts with 15 ft-lbs. torque.
3. After the step bar installed, periodic check to ensure all mounting hardware remains secure and tight.

Part List:

	Qty.	Description
①	× 6	Mounting Bracket
②	× 24	M8×30 Hexagon Bolt
③	× 42	M8×20 Flat Washer
④	× 42	M8 Lock Washer
⑤	× 18	M8 Hexagon Nut

