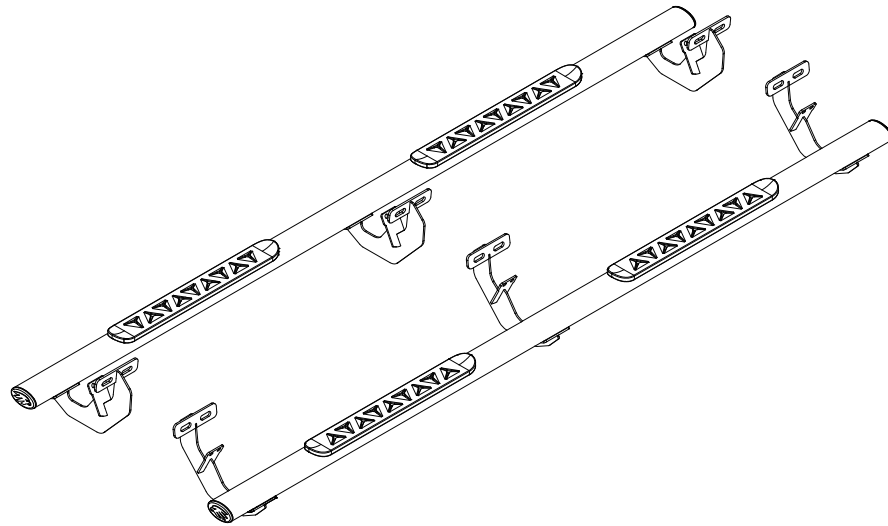


Tools Required

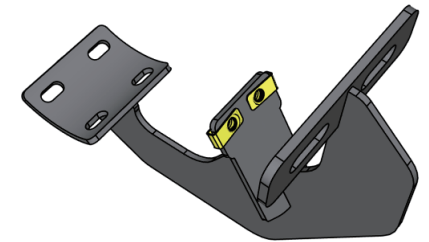
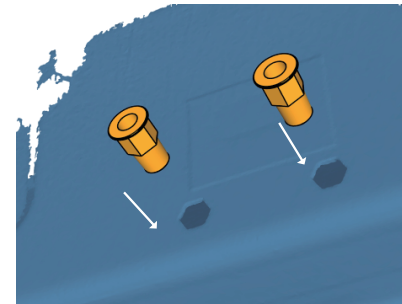
- | |
|-------------------|
| 13mm, 10mm Socket |
| Rivet Tool |
| Ratchet |
| Torque Wrench |

CEETSS-0055



Step 2:

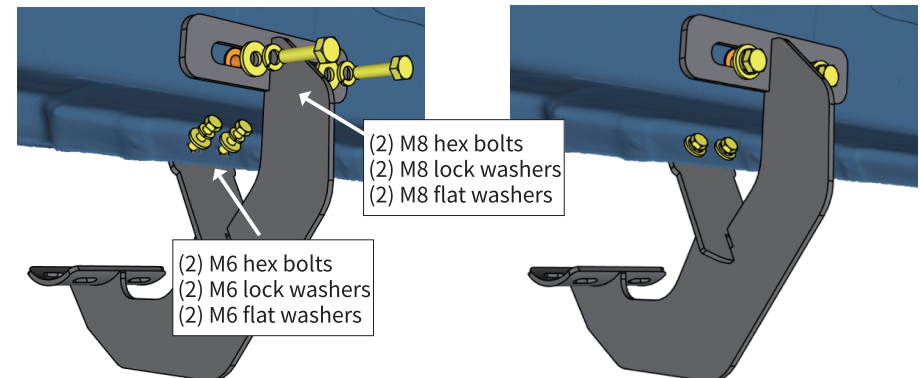
1. Insert and collapse rivet nuts into factory hexagon holes in the inner rocker panel.
2. Insert (2) M6 clip nuts to the small tab on the mounting bracket.



Step 3:

1. Attach the bracket to the inner rocker panel and secure with (2) M8 hex bolts, (2) M8 lock washers, (2) M8 flat washers.
2. Secure the bracket to pinch weld with (2) M6 hex bolts, (2) M6 flat washers (2) M6 lock washers.

Note: 09-12 models required self-drilling on pinch weld to install brackets, using 6mm or 1/4" drill bit. Rust-proofing is required.

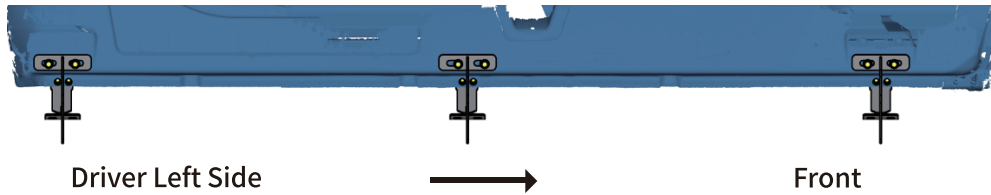


Notes

Read this instruction carefully before starting installation.
 Proper tools will improve the quality of installation and reduce the time required.
 09-12 models require self-drilling on pinch weld to install brackets.
 If missing parts or any damage found, please take a picture and contact us.

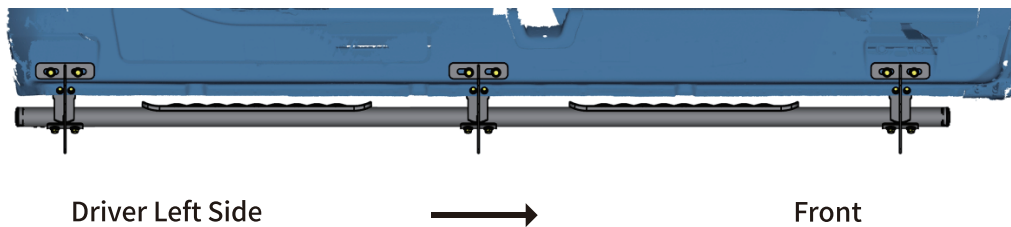
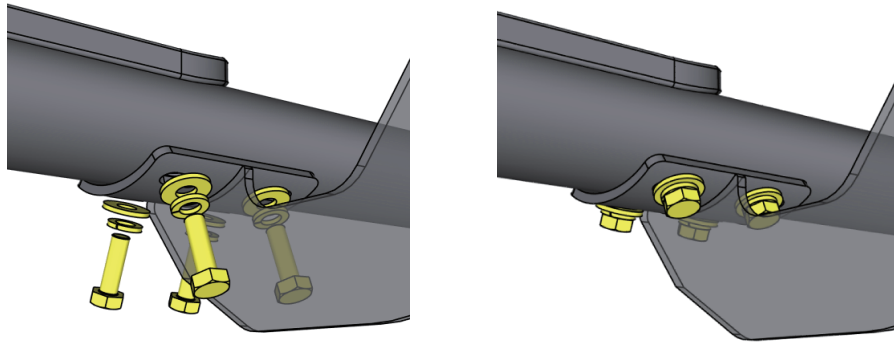
Step 1:

1. Locate (3) mounting positions each side.
2. Clean the factory threaded inserts if equipped.



Step 4:

1. With assistance, lift and place the step bar to the brackets.
2. Secure the step bar on brackets with (12) M8 hex bolts, (12) M8 flat washers, (12) M8 lock washers.



Step 5:

1. Tighten M6 hex bolts with 7 ft-lbs. torque.
2. Tighten M8 hex bolts with 15 ft-lbs. torque.
3. After the step bar installed, periodic check to ensure all mounting hardware remains secure and tight.

Part List:

	Qty.	Description	⑤	×12	M6×18 Flat Washer
①	×6	Mounting Bracket	⑥	×36	M8 Lock Washer
②	×36	M8×30 Hexagon Bolt	⑦	×12	M6 Lock Washer
③	×12	M6×30 Hexagon Bolt	⑧	×12	M8 Rivet Nut
④	×36	M8×20 Flat Washer	⑨	×12	M6 Clip Nut

