

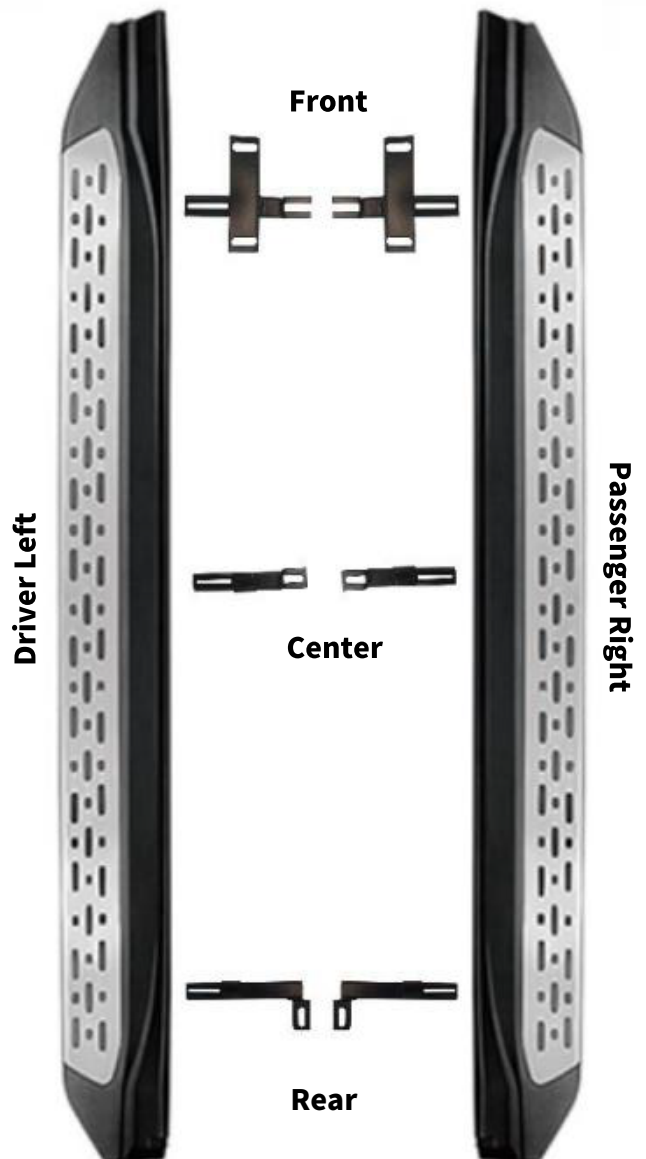
Installation & CARE

Tools Required

16mm Socket
13mm Socket
10mm Socket
Ratchet
Torque Wrench
Flathead Screwdriver

Part List

- 1 Driver Left Side Running Board
- 1 Passenger Right Side Running Board
- 1 Front Driver Left Bracket
- 1 Front Passenger Right Bracket
- 2 Center Bracket
- 1 Rear Driver Left Bracket
- 1 Rear Passenger Right Bracket
- 10 45mm M8 Bolt Plate
- 2 40mm M8 Bolt Plate
- 12 M8 Hex Nut
- 12 M8*24 Flat Washer



Notes

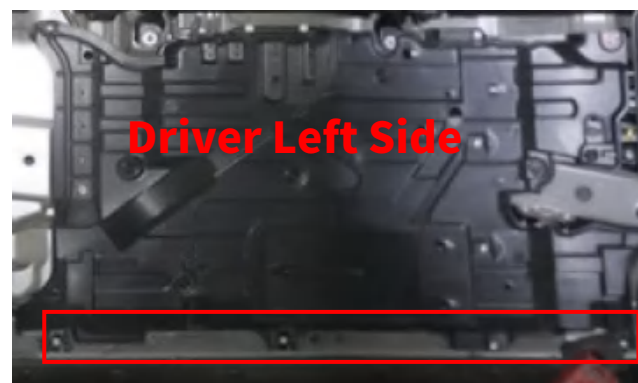
Read this instruction carefully before starting installation.
Verify all parts especially the direction of mounting brackets before installation.
If missing parts or any damage found, please take a picture and contact us.

Step 1:

Locate and remove factory M6 hex bolts that hold the edge of both side splash guard.

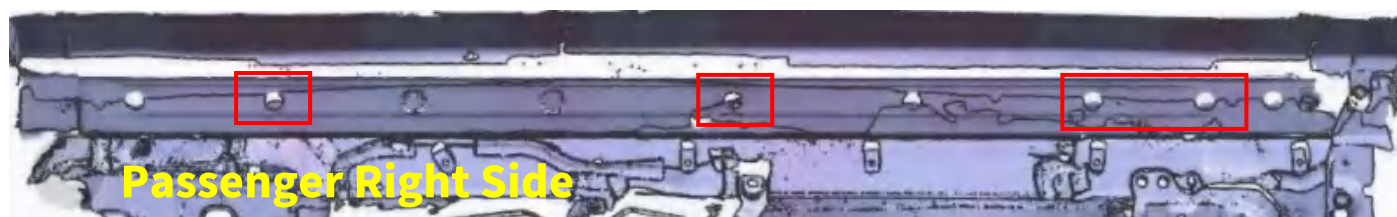
4 bolts on driver side and 5 bolts on the passenger side.
Uncover the splash guards.

(Gas engine models as shown, hybrid models were similar.)



Step 2:

Locate rubber plugs under the rocker panel and remove the 2nd 3rd 5th and 8th rubber plugs.



Rear



Front



Step 3:

Insert 45mm M8 bolt plates into uncovered round holes under the rocker panel.

The flat metal plate inside the hole and leave the stud outside.

(The plastic retainer does not include in package.)



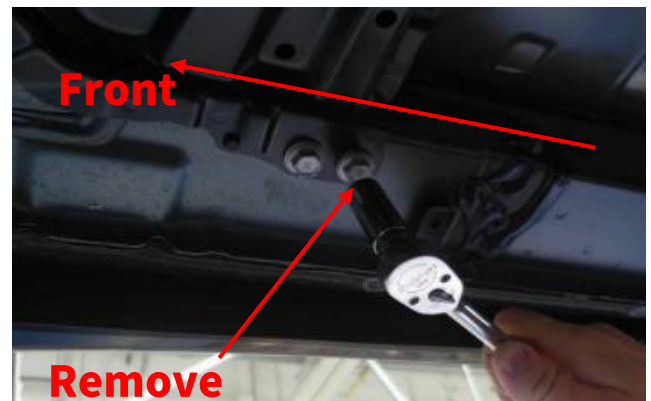
Step 4:

Remove (1) factory M10 hex bolt between the 2nd and 3rd mounting holes.

Place front mounting bracket onto the rocker panel and secure with (2) M8 hex nuts and (2) M8 flat washers.

Reinstall the factory M10 bolt.

(Passenger side as shown, driver side was similar.)



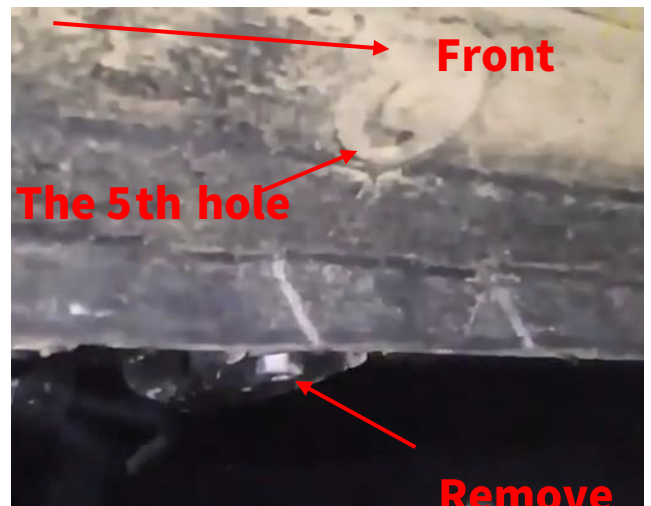
Step 5:

Remove (1) M10 hex bolt besides the 5th mounting hole.

Place center mounting bracket onto the rocker panel and secure with (1) M8 hex nuts and (1) M8 flat washer.

Reinstall the factory M10 hex bolt.

(Passenger side as shown. Skip the first and last operations on the driver side.)



Step 6:

Remove oval rubber plug under the body frame.

Insert 40mm bolt plate into the oval hole.

Place rear mounting bracket onto the rocker panel and secure with (2) M8 hex nuts, (2) M8 flat washers.



Step 7:

Tighten all hardware with 20ft. lbs torque.

Insert the mounting tabs on splash guard back into factory U-Clips.

To fit the running board brackets, squeeze or cut the splash guard may require.

Reinstall factory M6 hex bolts to secure splash guard.

Step 8:

Remove hex nuts and flat washers from running board.

Place the running board onto the brackets and align the studs with the slots in the brackets on the vehicle.

Secure the running board with (6) hex nuts and (6) flat washers.

Adjust running board to level and tighten all hardware.

