

Installation & CARE



Tools Required

- ① Ratchet
- ② 13mm Socket
- ③ Torque Wrench

Part List

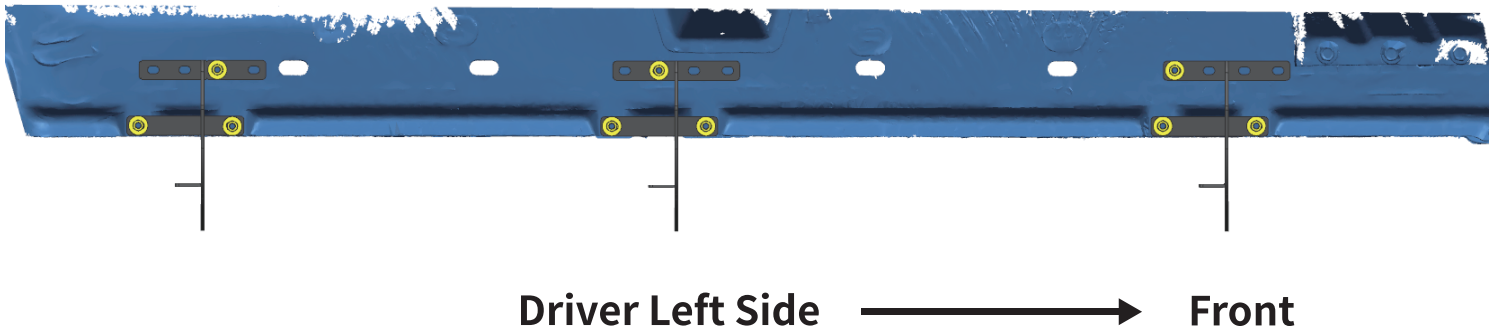
①	Step Bar	x2
②	Bracket	x6
③	M8 Flat Washer	x18
④	M8 Hexagon Nut	x18
⑤	M8 Spring Washer	x18
⑥	M8 Hexagon Bolt (on step bar)	x12
⑦	M8 Flat Washer (on step bar)	x12

Notes

- Read this instruction carefully before starting installation.
- Clean the factory painting on pre-weld studs before starting installation.
- Proper tools will improve the quality of installation and reduce the time required.
- If missing parts or any damage found, please take a picture, and contact us.

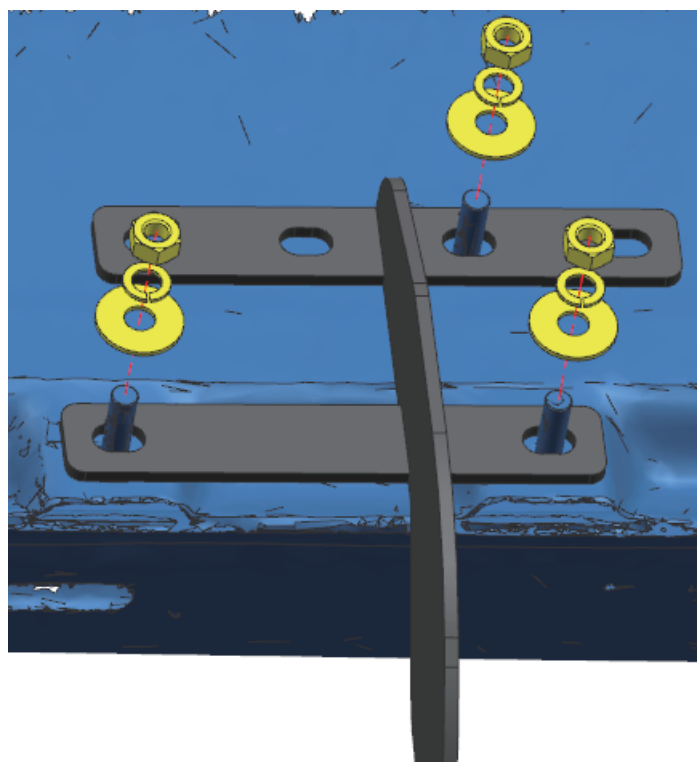
Step 1:

1. Locate three mounting positions each side.
2. Carefully clean the factory painting on studs before installation.
Do not use power tools.



Step 2:

1. Attach bracket to the rocker panel, feed factory studs through the holes on bracket.
2. Secure with (3) M8 flat washers, (3) M8 spring washers, (3) M8 hex nuts.
3. Repeat to install all brackets. Do not fully tighten.



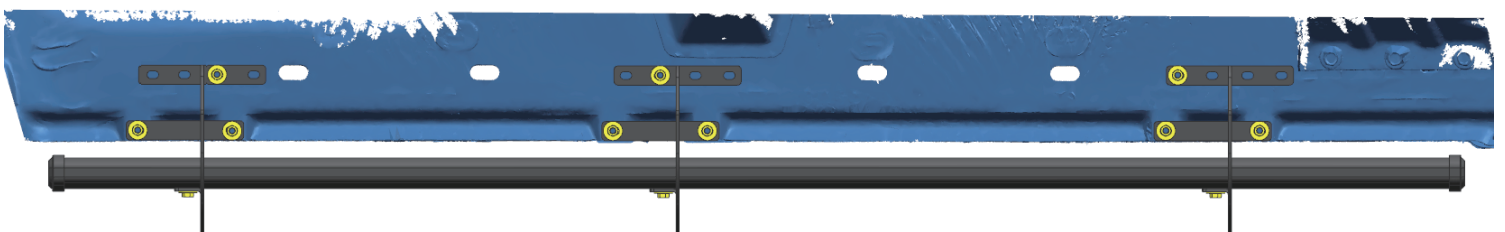
Step 3:

1. Remove (6) M8 hex bolts and (6) M8 flat washers from the back of step bar.
2. Slide mounting tracks to proper positions.
3. With assistance, lift and attach the step bar to brackets. Secure the step bar on brackets with (6) M8 hex bolts and (6) M8 flat washers.
4. Repeat to install the other side step bar, do not fully tighten.



Step 4:

1. Tighten M8 hex nuts on vehicle with 15 ft. lbs. torque.
2. Adjust the step bar to level and tighten M8 hex bolts with 15 ft. lbs. torque.
3. After the step bar installed, periodic check to ensure all mounting hardware remains secure and tight.



Driver Left Side → Front