

Installation & CARE



Tools Required

- ① Ratchet
- ② 10mm Socket
- ③ 13mm Socket
- ④ Torque Wrench

Part List

①	Step Bar	x2
②	Front/Center Bracket	x4
③	Rear Bracket	x2
④	M8 Hexagon Bolt	x6
⑤	M8 Flat Washer	x12
⑥	M8 Spring Washer	x12
⑦	M6 Hexagon flange Nut	x12
⑧	M8 Hexagon Bolt (on step bar)	x24
⑨	M8 Flat Washer (on step bar)	x24

Notes

- Read this instruction carefully before starting installation.
- Verify all parts especially the direction of step bar and brackets before installation.
- Proper tools will improve the quality of installation and reduce the time required.
- If missing parts or any damage found, please take a picture, and contact us.

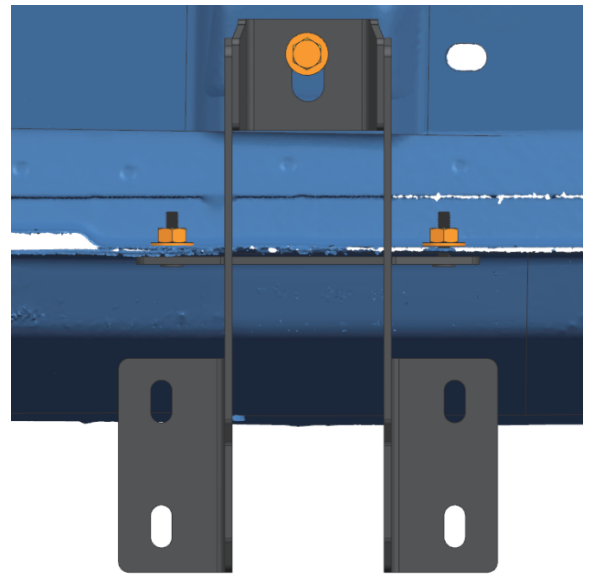
Step 1:

1. Remove factory rock rail if equipped. Three mounting positions each side.
2. Remove (6) M6 hex nuts on rocker panel and (3) M8 hex bolts on body frame.

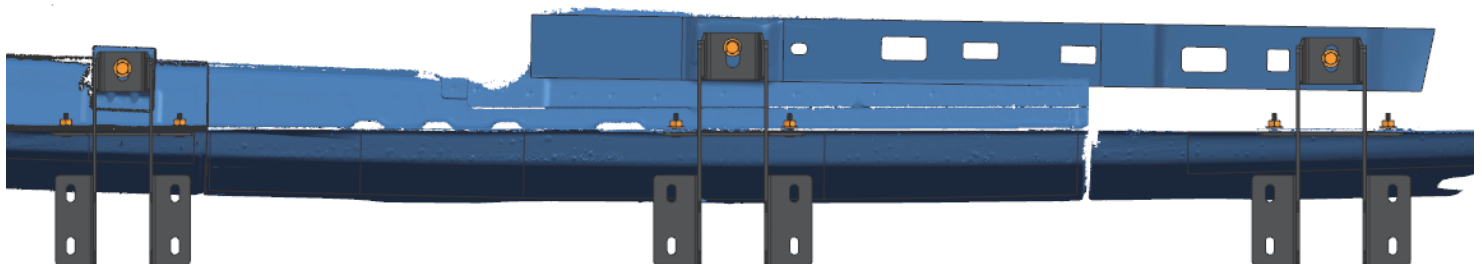
! Note: The step bar and factory rock rail cannot coexist.

Step 2:

1. Attach bracket to the body panel, feed the studs through the mounting holes on pinch weld.
2. Secure studs to pinch weld with (2) M6 hex flange nuts.
3. Secure the bracket to body panel with (1) M8 hex bolt, (1) M8 flat washer, (1) M8 spring washer.
4. Repeat to install all brackets. Do not fully tighten.)



! Note: The rear bracket is smaller than other brackets.



Driver Left Side → Front

Step 3:

1. Remove (12) M8 hex bolts and (12) M8 flat washers from the back of step bar.
2. Slide mounting tracks to proper positions.
3. With assistance, lift and attach the step bar to brackets. Secure the step bar on brackets with (12) M8 hex bolts and (12) M8 flat washers.
4. Repeat to install the other side step bar, do not fully tighten.



Step 4:

1. Tighten M8 hex bolts on body panel with 15 ft. lbs. torque.
2. Tighten M6 hex nuts on pinch weld with 10 ft. lbs. torque.
3. Adjust the step bar to level and tighten M8 hex bolts with 15 ft. lbs. torque.
4. After the step bar installed, periodic check to ensure all mounting hardware remains secure and tight.



Driver Left Side —————> **Front**