

# Installation & CARE

## Tools Required

13mm Socket  
Ratchet  
Torque Wrench

## Part List

- ① ×2 Step Bar
- ② ×6 Bracket
- ③ ×18 M8 Flat Washer
- ④ ×18 M8 Hexagon Nut
- ⑤ ×18 M8 Spring Washer
- ⑥ ×12 M8 Hexagon Bolt (on step bar)
- ⑦ ×12 M8 Flat Washer (on step bar)

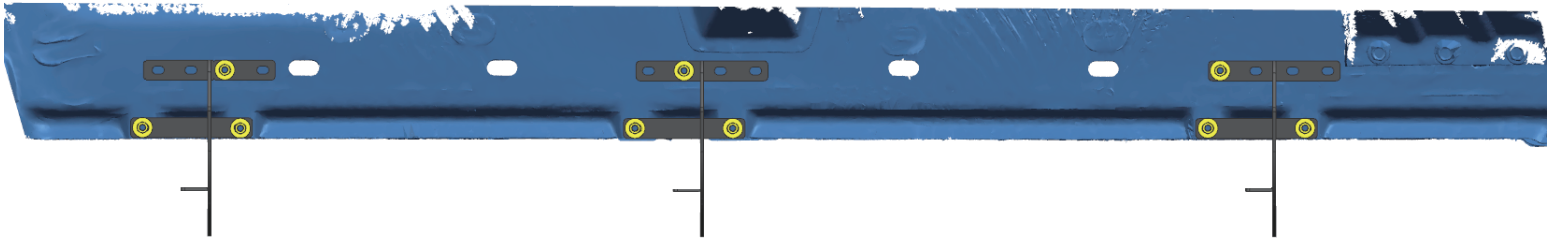


## Notes

Read this instruction carefully before starting installation.  
Proper tools will improve the quality of installation and reduce the time required.  
If missing parts or any damage found, please take a picture, and contact us.

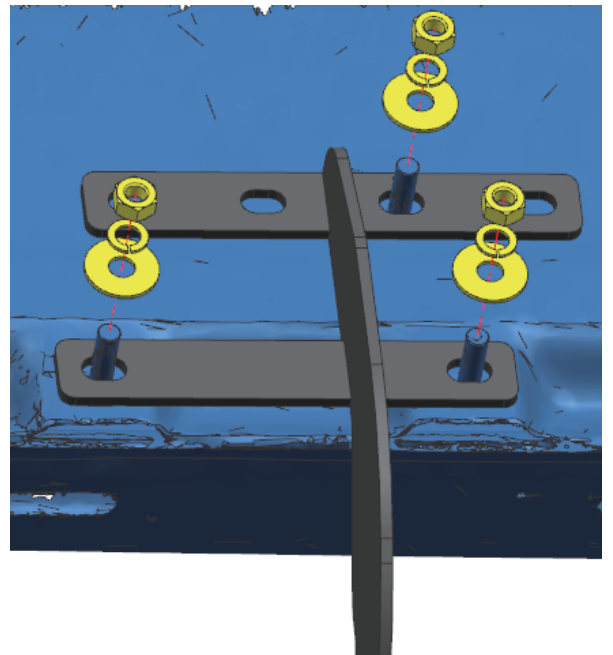
### Step 1:

1. Locate three mounting positions each side.
2. Carefully clean the factory painting on studs before installation. Do not use power tools.



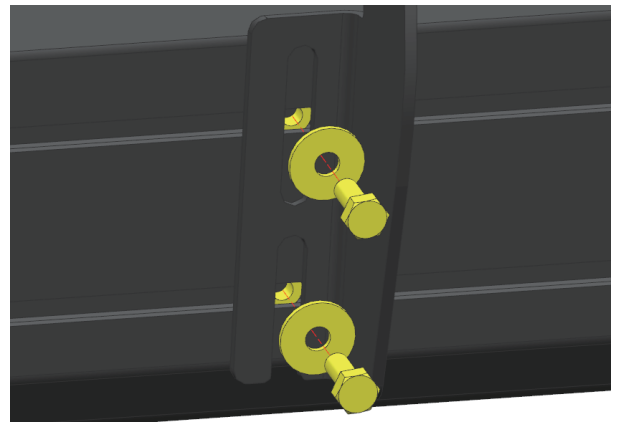
### Step 2:

1. Attach bracket to the rocker panel, feed factory studs through the holes on bracket.
2. Secure with (3) M8 flat washers, (3) M8 spring washers, (3) M8 hex nuts.
3. Repeat to install all brackets. Do not fully tighten.



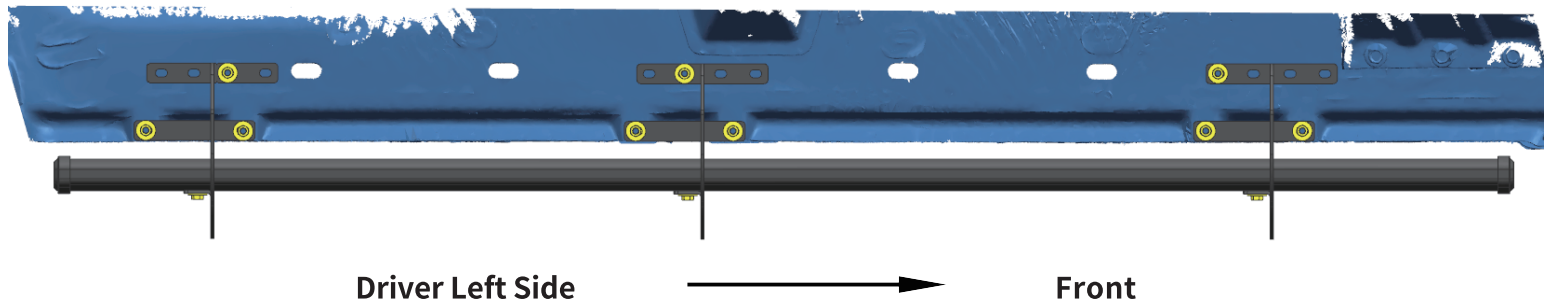
### Step 3:

1. Remove (6) M8 hex bolts and (6) M8 flat washers from the back of step bar.
2. Slide mounting tracks to proper positions.
3. With assistance, lift and attach the step bar to brackets. Secure the step bar on brackets with (6) M8 hex bolts and (6) M8 flat washers.
4. Repeat to install the other side step bar, do not fully tighten.



## Step 4:

1. Tighten M8 hex nuts on vehicle with 15 ft. lbs. torque.
2. Adjust the step bar to level and tighten M8 hex bolts with 15 ft. lbs. torque.
3. After the step bar installed, periodic check to ensure all mounting hardware remains secure and tight.



## Contact us

If you have any questions regarding the installation of your product, just give us a call Monday through Friday from 8:00 AM-5:00 PM Pacific time

### Steps for reference

- ☆Log into your My account.
- ☆Go to My account, select Purchases and find this order.
- ☆Click on "Contact Seller"

Thank you for selecting Running Board.  
Your new running board are custom molded to fit your specific vehicle.