

INSTALLATION & CARE

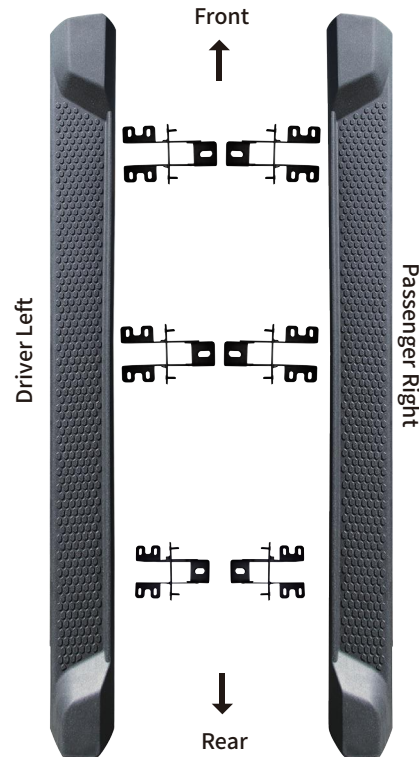
YG0801A055 YG0801W055

Tools Required

13mm Socket
10mm Socket
Ratchet
Torque Wrench

Part List

1	Driver Left Side Step Bar
1	Passenger Right Side Step Bar
4	Front/Center Bracket (10")
2	Rear Bracket (8-1/4")
6	M8 Hexagon Bolt
24	M6 Bolt Set
12	M8*22 Flat Washer
24	M6*18 Flat Washer
12	M8 Spring Washer
24	M6 Spring Washer
12	M6 Flange Nut



Notes

- Read this instruction carefully before starting installation.
- Verify all parts especially the direction of step bar and bracket before installation.
- The WIDER side of step bar towards front.
- Large size brackets for front and center positions, small size brackets for rear.
- If the step bar was too close to against rocker panel, try to add M6 flat washers before attach the bracket on rocker panel.
- If missing parts or any damage found, please take a picture, and contact us.

Step 1:

- Remove factory rock rail if equipped. Three mounting positions each side.
- Remove (6) M6 hex nuts on rocker panel and (3) M8 hex bolts on body frame.
- Note: The step bar and factory rock rail cannot coexist.

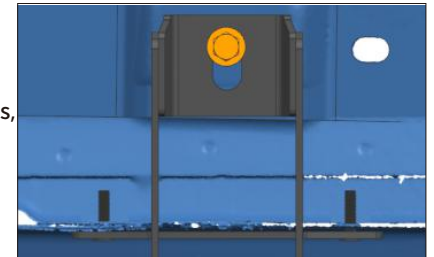
Step 2:

- Attach (2) front/center brackets and (1) rear bracket to the step bar. Secure with (12) M6 bolt sets.
- Note: The wider side of step bar towards front.



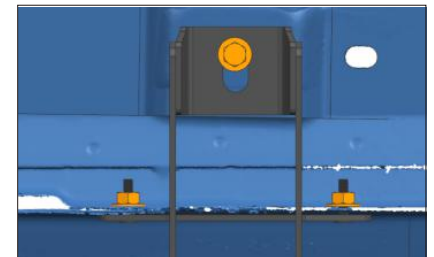
Step 3:

- With assistance, lift step bar up and attach the rocker panel, feed studs through the holes on rocker panel.
- And secure brackets on body panel with (3) M8 hex bolts, (3) M8 flat washers, (3) M8 spring washers.
- Do not fully tighten.



Step 4:

- After the bracket is attached, secure the bracket studs on rocker panel with (6) M6 flat washers, (6) M6 spring washers, (6) M6 flange nuts.
- Do not fully tighten.



Step 5:

Tighten the M6 bolts and nuts on rocker panel with 10 ft. lbs.

Tighten the M8 bolts on body panel with 20 ft. lbs.

Periodic check to ensure all mounting hardware remains secure and tight.

