

# OWNER'S MANUAL

Model:RO-K3-A

Alkaline & Remineralization

## REVERSE OSMOSIS

Water Filtration System



Follow Frizzlife



[www.frizzlife.com](http://www.frizzlife.com)

# CONTENT

<b>1. Before Installation</b>	<b>1</b>
<b>2. Part List</b>	<b>2</b>
<b>3. Sample Connection</b>	<b>3</b>
<b>4. Installation Tips</b>	<b>4</b>
<b>5. Installation Steps</b>	<b>5</b>
<b>6. Manual Timer</b>	<b>10</b>
<b>7. Replacement of Filter Cartridge</b>	<b>10</b>
<b>8. Filter Replacement Instruction</b>	<b>11</b>
<b>9. Maintenance</b>	<b>12</b>
<b>10. Hook Up to Your Refrigerator/Ice Maker</b>	<b>13</b>
<b>11. Troubleshooting</b>	<b>13</b>
<b>12. Frequently Asked Questions</b>	<b>15</b>
<b>13. Limited Product Warranty</b>	<b>17</b>

Thank you for purchasing Frizzlife RO-K3-A reverse osmosis undersink filter system with 100G RO membrane. If you have any questions or need any assistance, please contact: [support@frizzlife.com](mailto:support@frizzlife.com)

## Find the installation video

► Search 'Frizzlife RO-K3 installation' on [www.youtube.com](http://www.youtube.com)

## Register to get 150% warranty

1. Email us your order ID and full name at [support@frizzlife.com](mailto:support@frizzlife.com).
2. Scan the QR code to register.



## INSTALLATION INSTRUCTION

### 1. Before Installation

#### ► Inspect Box

Open the box and take out the system and all the components. Inspect them carefully according to 'Product Introduction' and make sure nothing is missing or damaged during shipping. If any parts are cracked or broken, please do not proceed with the installation and contact Frizzlife for an exchange or diagnosis.

#### ► Technical Parameters

Model	RO-K3-A	Operating Temp	Min.39°F,Max 100°F
Working Pressure	Min.25psi Max. 85psi	Pure: Drain Ratio	1:1 @ 70 psi
Flow Rate	100 gallons(@60psi of inlet pressure ,@77°F)	Tank Capacity	3.2 Gallons
RO Membrane size	1.8" x 12"	RO-K3 Size	5.5" x 7.1" x 15"

Low water temperature will slow down water flow.

Please contact us for reference at: [support@frizzlife.com](mailto:support@frizzlife.com)

2.Part List



RO-K3 System  
X 1 Set



Pressurized Tank  
X 1



RO Faucet  
X 1 Set



RO Membrane  
X 1



Wrench  
X 1



Composite CP Filter  
X 1



White 1/4" PE Tubing  
X 1



Yellow 1/4" PE Tubing  
X 1



Blue 1/4" PE Tubing  
X 1



Feed Water Valve  
X 1



Blade X 1



Teflon Tape  
X 1



Drain Saddle  
X 1



1/2"-3/8" Converter  
X 1



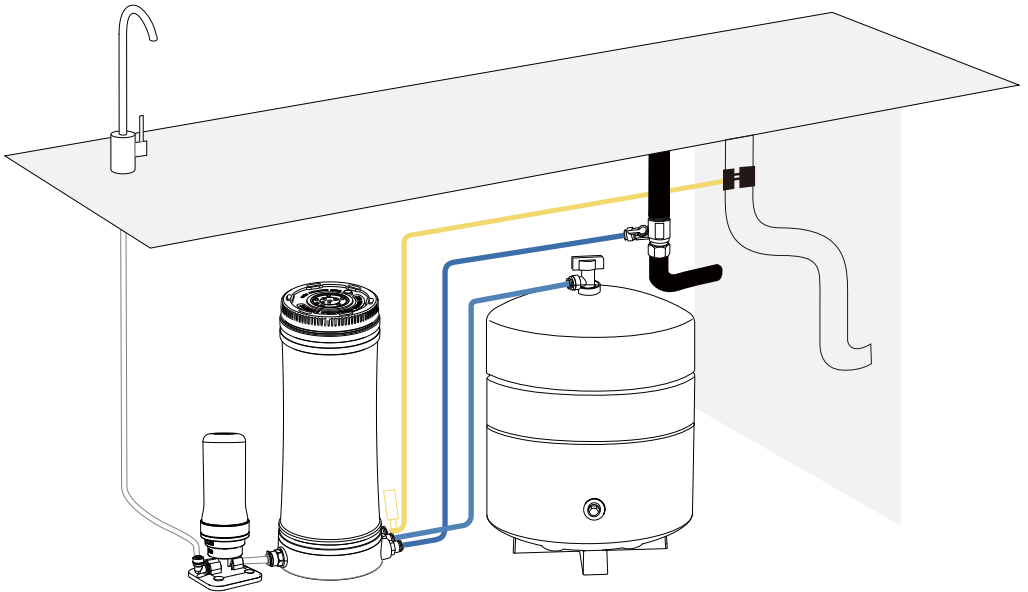
Post Alkaline/  
Remineralization Filter  
X 1

## • Required Tools

For installation, you need the following tools and materials:

- Metal wrench 13mm / 14mm / 17mm
- Power Drill
- Drill Bits 6mm / 12mm
- Teflon Tape

## 3.SAMPLE CONNECTION

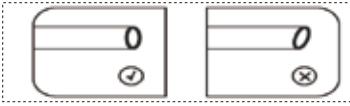


## • High water pressure reminder:

If the municipal water pressure is higher than 85 psi, a water pressure regulator must be installed before the inlet port of RO-K3.

## 4. Installation Tips

### ► How to cut the tubing?



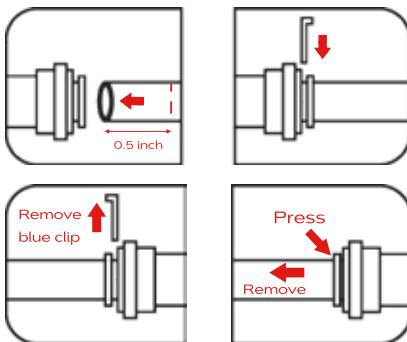
Please cut the tubing into two sections in proper length, make sure cut them squarely and cleanly.

### ► How to connect/disconnect the tubing?

**To connect:** please push the tubing into the fitting and make sure it is fully inserted. Then put the blue lock clip on the fitting, it will lock the tubing in place.

**To disconnect:** please remove the blue lock clip from the fitting, push in the lock sleeve, and then pull out the tube from the fitting

**Note:** If the tubing is not fully inserted, water leakage may occur. Pulling out the tubing directly will damage the fitting, which may also cause water leakage.



1. Insert to seal the connection

2. Remove to disconnect

### ► How to drill a hole on my sink (Optional)

**⚠ Note:** Please remember to wear safety glasses to protect your eyes before proceeding.

Use a 1/2" metal bit to drill. The recommended diameter of the hole ranges from 1/2" to 1.2" .

## 5. Installation Steps

**Precautions:**

- Do not use with water that is microbiologically unsafe or of unknown quality without adequate disinfection.
- Testing was performed under standard laboratory conditions, actual performance may vary.
- For cold water use only.
- This filter must be protected from freezing, which can cause cracking of the filter and water leakage.
- Do not allow children under 3 years of age to have access to small parts during installation.
- The installation must comply with all applicable state and local regulations.

### Step 1 Setup the Pressurized Tank

Choose the right location for the tank.  
The tank must be placed upright.  
Keep it away from direct heat sources (eg boilers).



**⚠ Note:** Please wrap the plumber tape around the thread fitting to prevent leaking.

Swiveling the ball valve onto the tank threaded fitting.  
Please tighten the ball valve properly and seal the connection with blue clip.

### Step 2 Load the Reverse Osmosis Membrane

Open the lid of RO-K3 . Remove the CP filter from the RO-K3.  
The CP filter has been loaded into the RO-K3 for transportation and compact packaging reasons.  
There are two small black rubber seals on one side of the membrane.  
Insert the **o-ring side** of the RO membrane into the circular slot of RO-K3.



**Step 3 Load the CP Filter**

Remove the sticker seal on the surface of the CP filter before use.  
Put the CP filter back into the housing.



**Step 4 Seal the RO-K3**

Make sure that the O-ring on the edge of the lid is properly seated and then evenly close the lid by hand.  
Use the provided wrench to tighten the lid firmly.



**Step 5 Connect the "SUPPLY" water tubing to RO-K3**

Remove all the plugs by pressing the fitting sleeves. Please cut the blue tubing into two parts evenly and cleanly with proper length. One for water source connection and one for tank connection. Connect one end of 1/4" blue tubing into "SUPPLY" port on the three ports side of the system, make sure to insert the tubing to the every end of the fitting to prevent leakage.





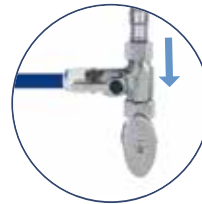
**Step 6 Connect the “three-way feed water valve”**

Insert the other end of 1/4" tubing to the quick fitting port of “feed water valve” . Please make sure to push and squeeze the tubing to the very end to prevent leakage. Seal the connection with blue clips.



**Step 7 Connect the water supply (Cold Water Only)**

Shut off the water supply.  
Disconnect the cold water pipe from angle valve.  
Twist the “feed water valve” onto the angle valve and make sure the O ring is loaded.  
Connect the original cold water pipe onto the “feed water valve” .



**⚠ Note:** If yours connection is 1/2", please use the 1/2" to 3/8" converter.



1/2" thread



1/2" to 3/8" converter

**Step 8 Connect the “WASTE” water tubing**

Insert the end of 1/4" waste yellow tubing with label into the “WASTE” port of the system.

**⚠ Note:**  
Please make sure you insert the yellow label side of the yellow tubing into the “Waste” port. There is a flow restrictor inside this tubing end, please DO NOT cut this tubing side.



**Step 9 Install the drain saddle**

Disassemble the drain saddle, and peel off the black sticker and stick to saddle valve  
Choose a spot on the drain pipe that is convenient for installing the drain saddle.  
It is recommended to install the drain saddle on the vertical drain pipe.  
Drill a 1/4" hole in the drain pipe. Make sure not to penetrate the opposite side of the pipe.  
Mount the drain saddle and tighten the screws with a screw driver .  
Insert the other end of 1/4" yellow tubing to the drain saddle about 1.4", and lock the fitting with a blue clip.



**Step 10 Connect the RO-K3 with the pressurized tank**

Insert one end of the second 1/4" blue water tubing into the "FILTERED (To tank)" port and the other end to the tank. Make sure the ball valve is open with the switch piece being parallel with the tubing.



### Step 11 Connect the post carbon filter

Attach the "IN" -side of the post alkaline/remineralization filter to the quick connector of RO-K3. Seal the connection with blue clip.



### Step 12 Connect the outlet tubing for filtered water

Insert the outlet quick fitting to the outlet port of the post alkaline filter. Make sure to push the fitting to the very end to prevent leakage.

Insert one end of 1/4" white tubing to the "OUT" -side of the post alkaline filter. Seal the connection with blue clip.

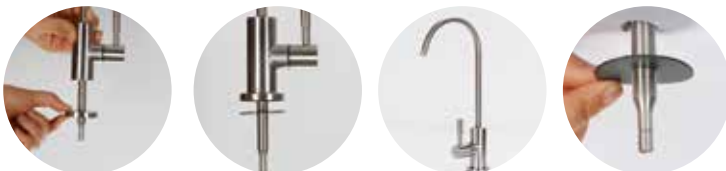


### Step 13 Install and connect the faucet

**⚠ Note:** If the thickness of your counter is over 1.95" (5cm), please contact us at [support@frizzlife.com](mailto:support@frizzlife.com) to claim for longer stem.

**⚠ Note:** If the counter top or granite does not have an existing hole, please drill one (1/2") before proceeding.

Follow the steps below and mount the faucet onto the sink top. Mount the rubber and fasten the hand fixture underneath. Connect the other end of 1/4" white tubing from the "FILTERED" port into the 1/4" quick fitting. Seal the connection with blue clip

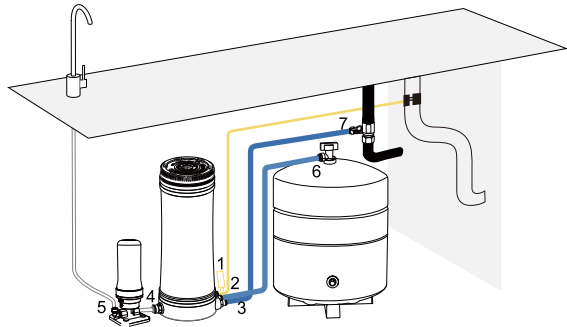




### Step 14 Final check before first use

Check all tubing lines again before supplying water. The tubing must be laid without kinking, twisting or bending. Turn on the water supply and check all connections for leaks.

Press the air pressure release button until the water fulfills the system. Full filled and then empty the tank for 3~4 times firstly before first use.



## 6. Manual Timer

Use the **replacement time table** to calculate and record next filter change time. Time for replacement. On the top of the system, set the installation date (day/month).



## 7. Replacement of Filter Cartridge

For this system, you need to replace the pre-composite filter, RO membrane, and post filter periodically.

Model No.	Replacement Cartridge	Expected Lifespan
K3-F-800	1st Composit PP & Carbon Filter	6-12 months
K3-G-100	2nd RO Membrane 100GPD	12-24 months
TD-9	3rd Post Alkaline/Remineralization Filter	6-12 months

### 8.Filter Replacement Instruction

#### For 1st Composite filter and 2nd RO membrane:

Please cut off the water supply before replacement. Please release the pressure from the faucet. Press the air release button to release the pressure of system. Use the provided wrench to unscrew the lid of the system. Change the correlated filter cartridge and screw back the system lid.



#### For 3rd post alkaline/remineralization filter:

Cut off the water supply before replacement. Twist off the filter cartridge from its base. Twist back the new post alkaline/remineralization filter cartridge.





**Note:** After Replacement, please press the air pressure release button until the water fulfills the system.



**Note:** Please flush the system for 3-4 tanks of water before starting to use. Once the tank has filled, open the drinking faucet to drain the tank and fillers. It will usually take about 5 minutes to flush the unit. When the tank is completely empty each time, water will simply trickle out the faucet. At this time, please close the drinking faucet and allow the unit another 45-60 minutes to refill the tank.

## 9.Maintenance

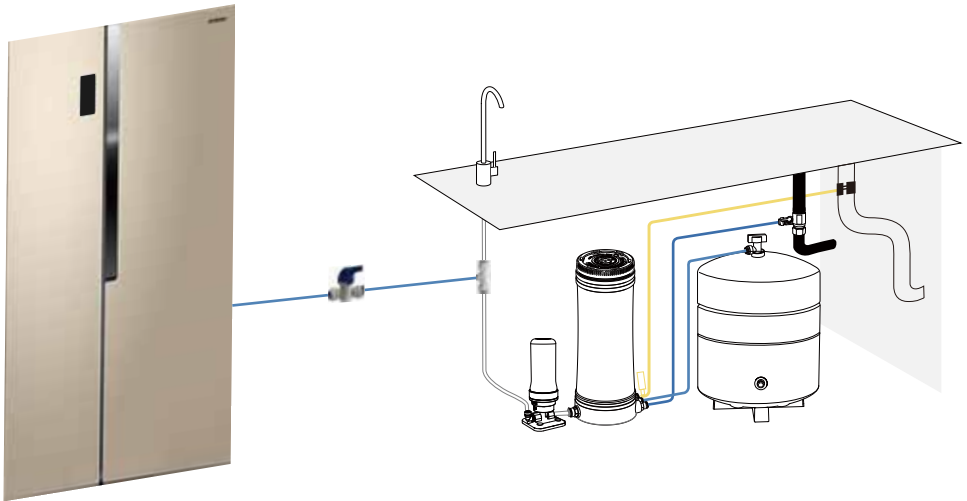
- ▶ Do not use with water that is microbiologically unsafe or of unknown quality without adequate disinfection.

If you don't use the system for a long time:

- A. If the system has not been used for more than 2 days, please turn on the faucet and discharge the filtered water at least 5 minutes before usage.
  - B. If the system will not be used for more than 1 week, please seal the filter cartridges and store them in the refrigerator but do not put them in the freezer. Discharge filtered water for at least 10 minutes before next time usage.
  - C. If the system will not be used for a long time, please cut off the water supply, cut off the power and turn on the handle of the faucet to release the internal pressure and avoid damage to the system.
- ▶ Please replace the filter cartridge regularly according to the filter life indicator.
  - ▶ The testing was performed under standard laboratory conditions, actual performance may vary depending on the source water quality and water usage. In case of premature blockage and failure of the filters, it is recommended to replace the filter in accordance with actual usage.
  - ▶ Clean the system with clear water if necessary. Do not drench the system! Wipe only. Do not apply steel wool, abrasive cleaner or corrosive liquid to the filter to avoid damage to the filter system.
  - ▶ Keep the drain water pipe unobstructed to avoid damage to the filter or internal components.
  - ▶ When the drain pipe is blocked, do not use the system to avoid the waste water from soaking the floor.
  - ▶ Check the system and water pipe fittings regularly for water leakage to avoid any property damage.

## 10. Hook Up to Your Refrigerator/Ice Maker

- ▶ The RO-K3-A system can be connected with your refrigerator/Ice-maker by utilizing an extra IMC-1 ice maker connection kit (not included). Simply search “Frizzlife IMC-1” or Asin# “B07R7NH55L” on Amazon, or scan the QR code to purchase.



## 11. Troubleshooting

This reverse osmosis system undergoes multiple quality and functional checks prior to shipment.

If you still find a problem, check the possible causes and their remedies.

However, if you do not find a solution, please contact your local distributor or send email to [support@frizzlife.com](mailto:support@frizzlife.com).

Detection/Error	Phenomena	Causes	Solutions
No water output	Tank empty	Water supply pipe valve closed	Open water supply valve
			Tubelines inspection
		Water supply stagnation	Cleaning water pipe
		Bent tubes	Tubelines inspection
		Stuck of Shut-off valve	Cleaning/replacing shut-off valve
		Closed Ball valve of tank	Open the ball valve
		The cartridge filters are setup improperly	Take it out and put it back again properly
		The membrane is in wrong direction	Take is out and put it back in correct flow direction
Small water output	Water producing/ filling into tank slowly	Inlet water pressure is too small	Use pump set
		Incorrect tube connection	Tubing inspection
	Dripping from the faucet	Closed Ball valve of tank / Stuck of Shut-off valve	Open tank valve / Clean/ Replace shut-off valve
	The tank becomes heavier. Water does not flow out of the tank	The air pressure in the tank is too low. / The inside tank rubber sheet is defective.	Inflate the tank up to 7psi / Replace tank
		Bent tubes	Tubelines inspection
	No fault has occurred so far	Membrane/cartridge filter exhausted	Replace membrane/ cartridge filter
System doesn't stop / Waste water : product water > 3:1	Waste water keeps running	Inlet pressure is too low	Use pump set
		Shut-off valve contaminated / stuck	Clean/Replace shut-off valve
Sewage noise	Noise from waste water pipe	location not suitable for drain saddle installation	Change location or push the yellow tube close to the inner wall of sink drain pipe



Detection/Error	Phenomena	Causes	Solutions
Unclean water output	Black granules, soapy	Membrane/ cartridge exhausted	Replace membrane/ cartridge filter
		Insufficient flushing for initial	Thoroughly flush the system
		use of membrane / cartridge	
		The tank is located near heat source area	Install the tank in other location
		Tubes connected to wrong ports	Tubelines inspection
Ports / Tubes are leaking	Ports and tubes are connected improperly	Tubes bent or not fully connected	Tubelines inspection
		Tubes didn't plug into ports properly	Pull out the tubes and plug into the ports strongly until you felt a click kind of hand feeling
		The system is exposed to strong ultraviolet radiation or low temperatures	Installation of sun protection and anti-frost devices / equipment
		Tubes broken	Change tubes

## 12. Frequently Asked Questions

### **Q: Why there are many white bubbles in the water?**

Normally for the first time use of the RO system, the water seems to have white bubbles in it, which is normal and totally drinkable. It is because when the pump is pressurizing the water, it will pressurize the air at the same time. It will make the air molecules smaller, thus the solubility further increases. The air can't be released at that time because of the pressure in the RO system. However, when you turn on the tap to get a cup of water, the pressure of air is released. So you will see a huge number of bubbles in the water. It looks cloudy and white, but they are just bubbles. After you put the water still for a while, all bubbles will be gone, the water is totally good for drinking.

**Q: Why TDS is higher at the beginning, but back to normal range after about one minute?**

Osmosis is a natural phenomenon happens in all RO system, no matter if you have a conventional RO system or tankless RO system. When the RO system starts to work, pressure from the pump overcomes natural osmotic pressure, forcing feed water through the RO membrane that removes the impurities. When the RO system stops working, the pump stops offering pressure as well. At that time, because of different concentrations, a small fraction of ions will enter into pure water and cause TDS to rise by a small amount. However, even if the TDS reading is a little high at the beginning, the quality water is still unbeatable by any other filtration methods including carbon, KDF, ceramic, UF, UV, etc.. The water is totally good to drink and you don't have to wait for about 1 minute to get the water, since the whole system will not release any harmful substances to the water. The TDS removing rate for RO-K3 is about 94-95%, if your incoming TDS is high, the outlet TDS will be high too.

**Q: Why out TDS value of RO-K3-A is higher than normal RO system?**

The first two stages of the system are able to eliminate more than 99.99% of all substances from your tap water, removing more than 94% of TDS value. The pure water then goes through the 3rd remineralized stage of the system which restores essential minerals, adjusts pH level and further polishes the water taste, serving customers with optimal water solution. However, the essential elements such as calcium and magnesium may raise the TDS value of the water again.

If you consider the remineralized water to be undesirable, please contact us for an exchange of the last alkaline filter to universal post carbon filter.

**Q: My granite is thicker than 1.95 inch and the faucet stem is not long enough, what should I do?**

Please feel free to contact us to claim for a longer thread stem. Simply email us your order ID, full name, shipping address and contact phone number for delivery. We will arrange the shipment for you ASAP.

**Q: Where do I find the replacement filter cartridges?**

You could purchase the replacement water filters on all official stores of Frizzlife on Amazon, Walmart, eBay and frizzlife.com. Simply search the model number of the replacement cartridge on the platforms to purchase:

Frizzlife K3-F-800 (1st stage);

Frizzlife K3-G-100 (2nd stage);

Frizzlife TD-9(3rd stage).

### 13. Limited Product Warranty

Reverse Osmosis Undersink Water Filter System  
Warrantor: FRIZZLIFE INC

#### ONE YEAR LIMITED FRIZZLIFE WARRANTY

The Frizzlife RO-K3-A undersink reverse osmosis units are warranted to the original purchaser.

To be free of defects in material and workmanship by Frizzlife INC, Frizzlife will replace or repair components of the unit that Frizzlife has deemed to be broken within the limits of the warranty without charge. The customer is not responsible for any freight involved with shipping the item back for inspection and shipment of replacement items. Frizzlife is not liable for cost of removal, installation, transportation or any other charges in connection with a warranty claim.

Customer must register their systems with Frizzlife within 90 days of purchase in order to obtain a warranty. Warranty will discontinue after the unit is removed from the location where it was originally installed. Warranty begins on the date of delivery of product to the customer.

**Owner' s Warranty Responsibility:** As a condition of this Limited Warranty, the owner must ensure that periodic maintenance of the system is performed as described in the literature enclosed with the system. Should your unit develop a defect or otherwise fail to perform in accordance with this warranty, you should contact the retailer from whom the product was originally purchased.

1. Frizzlife is not liable for anything that we deem as abuse of the units, including but not limited to, misuse of product outside of intended use, equipment modifications, unauthorized repairs, improper installation, damage from freezing, hot water, fire or other acts of God outside of Frizzlife control.

This warranty will be void if defects occur due to failure to observe the following conditions:

- ▶ Incoming water to the the system cannot exceed 100° F.
- ▶ Do not use outdoors or in a location that is subjected to direct sunlight or freezing. This warranty will not be effective unless and until the Frizzlife is shown to have been used in accordance with the installation and maintenance instructions accompanying the product.

- 2. Filter Cartridges are considered as disposable items, thus are not covered by warranty.
- 3. Customer is responsible for proper operation, which includes complete and continual leak inspection.
- ▶ Most of the unit components are made of plastic and eventually can break or crack from stress.
- ▶ There are no other warranties which extend beyond what is described above.

**⚠ Note:**

IN CASE SOME STATES DO NOT ALLOW LIMITATIONS ON HOW LONG AND IMPLIED WARRANTY LASTS, YOU MAY CHOOSE TO RETURN THE SYSTEM. IF YOU CHOOSE TO KEEP IT, YOU AGREE THAT THE ABOVE LIMITATIONS STILL APPLY TO YOU.

To receive warranty service, please contact Frizzlife at [support@frizzlife.com](mailto:support@frizzlife.com)

## 150% Extended Warranty

- 1. Email us your order ID and full name at [support@frizzlife.com](mailto:support@frizzlife.com)
- 2. Scan the QR code below to register

