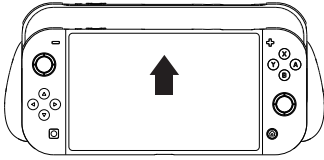


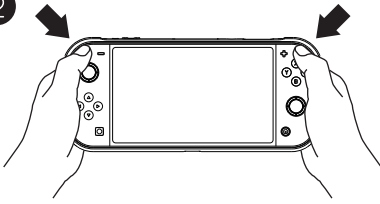
FITTING THE GRIPCASE:

1



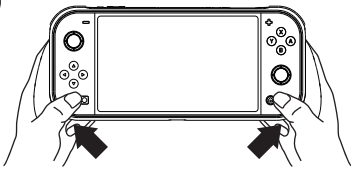
Put the SWITCH into the GripCase starting with the ZR/ZL buttons.

2



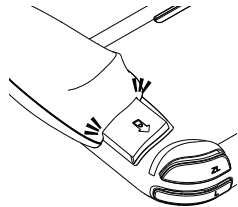
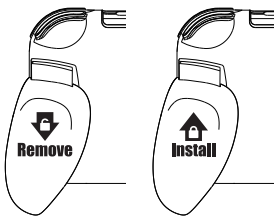
Press the ZR/ZL corners into the case.

3



Press the bottom corners into the case.

SWITCHING GRIPS:



Please ensure the slider is fitted correctly.

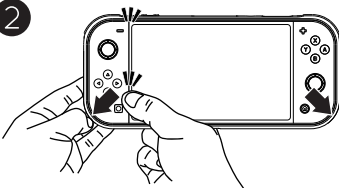
REMOVING THE GRIPCASE:

1



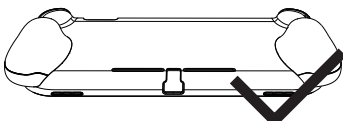
In order to remove the GripCase easily, we suggest removing both grips first.

2

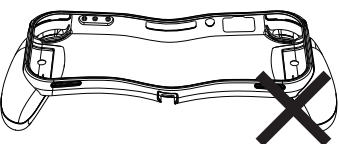


Use one hand to hold the junction between the joy-con and pad. Then, remove the GripCase from corner to corner.

STORING THE GRIPCASE:



Please store GripCase front side down when not fitted on SWITCH Lite.



Please **DO NOT** store GripCase back side down when not fitted on SWITCH or rest anything on GripCae.