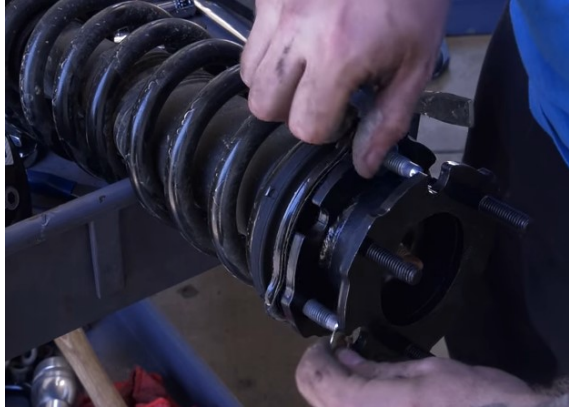


For more tech support, please contact us at 818-666-8556 or email: info@ksppperformance.com



11) Reinstall the strut assembly in reverse of disassembly. It may be necessary to use a pry bar to aid in the re-installation of the strut assembly, and a pit jack to raise the lower control arm.

12) Verify that all hardware has been tightened to the proper torque specs.

13) Install sway bar drop spacers (those flat black plates with a hole in each

end) by loosening the sway bar mount to the frame and installing the flat 1/4" spacer between the mount and the frame.



14) Remount the wheels.

15) Lower truck back down to the ground and ensure that nothing is binding. Please remember to double check all fittings before operating vehicle.

Thank you for the purchases!

It is our honor to help you. So please write us about what you think and what you need.

We will reply you ASAP and try our overwhelming best to help you solve the problem.

Please feel free to contact us via eBay message or Amazon tools ,or send email to info@ksppperformance.com directly.

Tel:818 666 8556

Amazon:

1. Visit www.amazon.com/your-orders
2. Find your product
3. Click on "contact seller"
4. Include your order #

eBay:

1. Visit www.ebay.com
2. Click on "My eBay"
3. Find your product
4. Click on "More actions"
5. Click on "Contact seller"

For more tech support, please contact us at 818-666-8556 or email: info@ksppperformance.com

15+ Chevy Colorado & GMC Canyon 2WD & 4WD 3" FRONT LEVELING KIT



15+ Chevy Colorado & GMC Canyon 2WD & 4WD 3" FRONT LEVELING KIT



Note: The actual thickness \neq lift height.

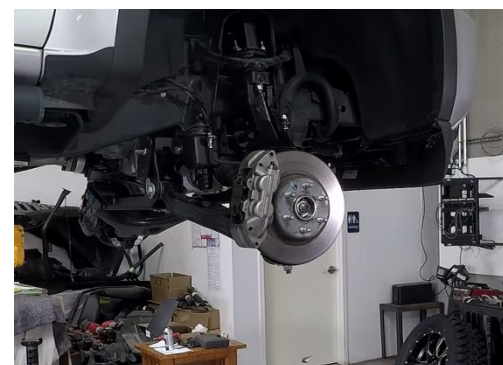
The words marked on the item is the actual lift height.

Re-torque all lug nuts on the spacer after 100-200 miles of driving.

1) Raise the front of the vehicle and securely support it on jack stands or lift.



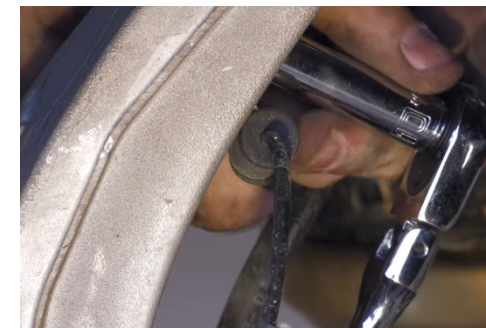
2) Remove the wheels to gain access to the hub and suspension components.



3) Disconnect sway bar links and upper ball joint nut.



4) Remove the wheel speed sensor wiring bracket from the back of the steering knuckle.



5) Remove the wheel speed sensor from the hub.

6) Leaving the brake line connected, remove the brake caliper and securely support it out of the way.

7) Disconnect the upper ball joint from the steering knuckle.



8) Disconnect the strut from the lower control arm.



9) Remove the three upper strut mount nuts and remove the strut from the vehicle.



10) Install the strut spacer on to the top of the strut with the included hardware.