

LEVELING LIFT KITS

11-19 Ford Explorer leveling lift kits installation instructions



The Actual Spacer Thickness not equal to The Actual Lift Height. This kit is not manufactured to be 1:1 ratio in terms of lift amount to spacer thickness, may be the thickness will less than the lift height.

Please note that it is recommended that all kits be installed by a professional shop.

1. Raise vehicle on jack stands and remove wheels. Disconnect the ABS and brake hose.

2. Loosen & remove the axle nut, and push the axle through the spindle.



3. Disconnect sway bar end link from strut.

4. Disconnect tie rod end.



5. Remove the lower strut mounting bolts from the spindle. you may need to carefully tap the bolts with a

hammer to fully remove them.



6. Remove nuts from upper strut mount. Support weight of strut before removing final nut. Remove strut from vehicle.

7. Install the spacer on strut using factory hardware. Reinstall, making sure the curved edge of strut mount faces the engine, and the notched edge of the spacer faces away from the engine.



8. Reinstall upper strut mounting nuts. Do not tighten fully.



9. Reinstall lower strut mounting bolts while guiding axle through the spindle. Tighten all strut nuts fully, upper and lower.



10. Install sway bar extension bracket with provided hardware. Tighten the sway bar end link to the bracket.

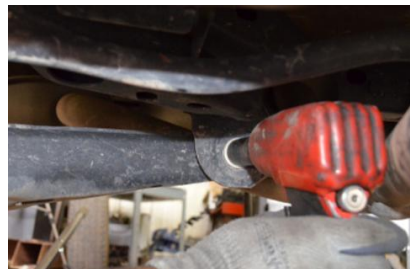


11. Re-tighten the axle nut, reinstall the tie rod (above) and the ABS/ brake lines.

12. Remove sway bar end link from knuckle on both sides of vehicle.

13. Remove the lower shock mounting bolt.

14. Loosen, but do not remove, the lower control arm (LCA) bolt at the frame.



15. Support the LCA with a floor jack and remove the mounting bolt at the steering knuckle. Carefully lower

LCA and remove the coil spring.



correctly in the LCA, see image.



16. Cut off both nipples from the rubber spring isolator.



19. Using floor jack apply pressure to LCA until it lines up with knuckle and replace bolt. Do not tighten LCA until vehicle is back on ground.

20. Install lower shock extension to shock and knuckle.



17. Install the spring spacer onto the coil spring.

18. Reinstall coil spring, making sure the bottom of the spring lines up

Repeat steps 13-20 on other side. Reinstall both sway bar links. Check all hardware is mounted at correct torque settings. Recheck all work, and reinstall wheels. Re-tighten Lower Control Arm mounting bolts. Test drive, then have a trained technician perform an alignment.



Thank you for the purchases!

It is our honor to help you. So please write us about what you think and what you need.

We will reply you ASAP and try our overwhelming best to help you solve the problem.

Please feel free to contact us via eBay message or Amazon tools.

Amazon:

1. Visit www.amazon.com/your-orders
2. Find your product
3. Click on "contact seller"
4. Include your order #

eBay:

1. Visit www.ebay.com
2. Click on "My eBay"
3. Find your product
4. Click on "More actions"
5. Click on "Contact seller"