

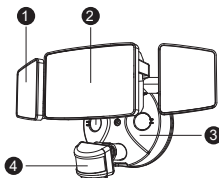
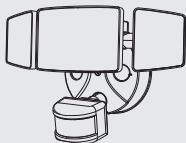
PIR LED WALL LIGHTS WITH MOTION SENSOR

Quick Start Guide

MODEL: BDJ55G-3

COMPONENTS AND STRUCTURE

BDJ55G-3



1. Cover
2. LED Light Source
3. Lamp Bracket
4. Sensor Head

PARTS LIST



- A** Machine Screw
QTY: 3



- B** Expansion Rubber Plug
QTY: 3



- C** EVA Gasket
QTY: 1



- D** Mounting Bracket
QTY: 1



- E** Wire Nuts
QTY: 3



- F** Long Machine Screw
QTY: 1



- G** Silicone Gasket
QTY: 1



- H** Machine Screw
QTY: 2



- I** Machine Screw
QTY: 2

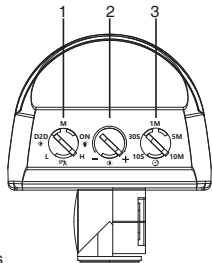
SPECIFICATIONS

LED WALL LAMP	
Model	BDJ55G-3
Input Current	0.5A
Rated Power	55W
Luminous Flux	5500lm
Input Voltage	100-120V ~ 60Hz
CCT	6500K
CRI	≥80
Power Factor	≥0.9
L _{70B50} lifetime	30000hours L _{70B50} @ 25°
Beam Angle	120°
t_a	-20-40°C/-4°F-104°F
Luminaire Location	SUITABLE FOR WET LOCATIONS
Dimensions (LxHxW)	270x152x109 mm / 10.63x5.98x4.29 in
Weight	0.91 kg / 2 lb
Max Projected Area	0.0214m ² / 0.23ft ²
Max. Lighting Coverage	90m ² / 968ft ²
<p>Note: The testing standard of the product's luminous flux: Place the three/two lights on the same horizontal surface for testing, and the tested luminous flux is the accurate luminous flux.</p>	<p>The diagram shows two views of the LED wall lamp. The left view is a front view showing a central rectangular light panel flanked by two smaller rectangular light panels. A vertical dimension line labeled 'H' indicates the height of the central panel. A horizontal dimension line labeled 'L' indicates the total width of the three panels. The right view is a side view showing the lamp's profile, including the mounting bracket and the depth of the light housing. A horizontal dimension line labeled 'W' indicates the depth of the lamp.</p>

Operation Instructions

1. The function knob is divided into 5 gears

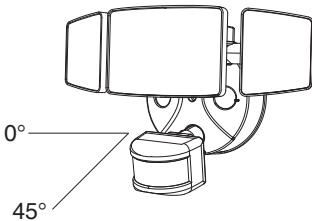
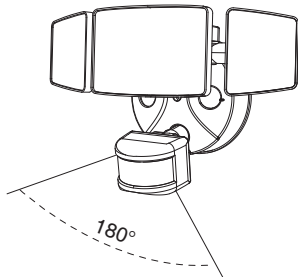
- L: Low sensitivity, sensing distance is 4-6 meters.
- D2D: Light control mode, automatically turn the light on/off depending on the ambient brightness.
- M: Medium sensitivity, sensing distance is 6-10 meters.
- ON: Constant light mode: the light will always be on after being powered on, and won't switch on/off automatically.
- H: High sensitivity, sensing distance is 10-15 meters.



2. Can identify day and night: The consumer can adjust work ambient light. It can work in the daytime and at night when it is adjusted on the "+" position (max). It can work in the ambient light less than 10LUX when it is adjusted on the "-" position (min).

3. Time-delay adjustment: It can be set according to the consumer's desire, there are five gears: 10 seconds / 30 seconds / 1 minute / 5 minutes / 10 minutes. Time-delay is added continually: When it receives the second induction signals after the first induction, it will compute time once more on the rest of the first time-delay basic (set time).

Detection Range: 180°



NOTE:

1. The PIR sensor shall always be tilted slightly downward.
2. The orientation angle of the sensor shall be between 0-45°.
3. The detection distance of the sensor is the farthest when the ambient temperature is 25°C. Any temperature fluctuations above or below 25°C will affect the detection distance.
4. If the light continues to detect motion while it is on, it will remain on until the motion stops.

PREPARATION

NOTE:

Before beginning assembly of product, make sure all parts are present. Compare parts with parts list. If any part is missing or damaged, do not attempt to assemble the product.
Estimated Assembly Time: 30-60 minutes.

Recommended to be installed on the ground above 2.5m (8.2 ft) and no higher than 5 m (16.4 ft).

Product appearance may vary from image shown.

TOOLS REQUIRED (not included)



Flathead
screwdriver



screwdriver



Silicone Sealant



Eye Protection



Pliers



Step Ladder

WARNING:

THIS PRODUCT MUST BE INSTALLED IN ACCORDANCE WITH THE APPLICABLE INSTALLATION CODE BY A PERSON FAMILIAR WITH THE CONSTRUCTION AND OPERATION OF THE PRODUCT AND THE HAZARDS INVOLVED.

CAUTION:

PLEASE MAKE SURE YOUR WALL SWITCH AND POWER AT MAIN CIRCUIT BREAKER BOTH ARE OFF.

IF IN DOUBT ABOUT ELECTRICAL INSTALLATION, CONSULT A LICENSED ELECTRICIAN.

PREPARATION

RISK OF SHOCK:

BEFORE BEGINNING INSTALLATION, TURN OFF ELECTRICITY AT THE CIRCUIT BREAKER BOX OR THE MAIN FUSE BOX.

NOTE:

BE SURE TO USE WIRE NUTS/CONNECTORS RATED FOR THE CORRECT GAUGE AND NUMBER OF WIRES USED.

MAKE SURE THERE ARE NO EXPOSED WIRE BUNDLES OUTSIDE THE WIRE NUT/CONNECTOR (IF APPLICABLE).

BE CAREFUL NOT TO DAMAGE OR CUT THE WIRE INSULATION (COVERING) DURING INSTALLATION. DO NOT LET THE WIRES TOUCH ANY SHARP EDGES.

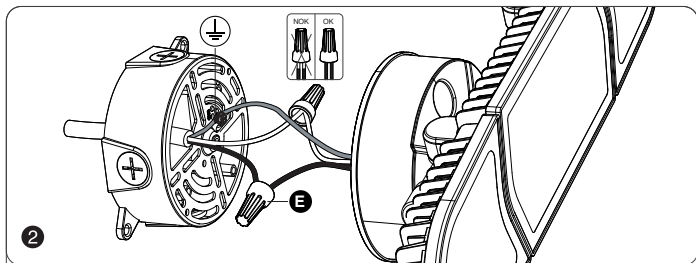
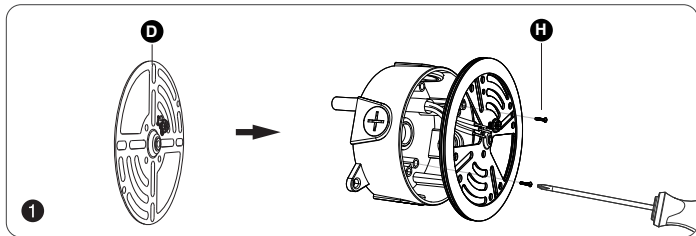
WARNING:

DO NOT CONNECT THIS LIGHT FIXTURE TO AN UNGROUNDED ELECTRICAL SYSTEM. ATTACH GROUND FIXTURE WIRE TO EITHER GREEN GROUND SCREW ON MOUNTING PLATE OR THE GROUND WIRE IN THE OUTLET BOX.

INSTALLING THIS LIGHT IN AN UNGROUNDED ELECTRICAL SYSTEM MAY CAUSE THE METAL PARTS OF THE LIGHT TO CARRY CURRENT IF ANY WIRES OR WIRE CONNECTIONS ARE DAMAGED OR LOOSE. IN THIS CASE, ANYONE WHO TOUCHES THE LIGHT WILL RECEIVE AN ELECTRIC SHOCK, RESULTING IN INJURY OR DEATH.

INSTALLATION STEPS

FOR WET LOCATION, MAKE SURE FILL FULL THE GAP OF EVA GASKET AND MOUNTING SURFACE WITH SEALING COMPOUND OR SILICON GLUE.



WHITE
NEUTRAL LINE

FROM HOUSE

BLACK
LIVE WIRE

FROM HOUSE

GREED
GROUND WIRE

FROM HOUSE

(N) WHITE
NEUTRAL LINE

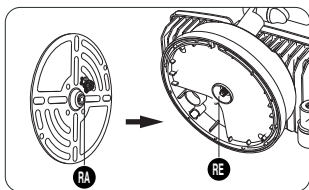
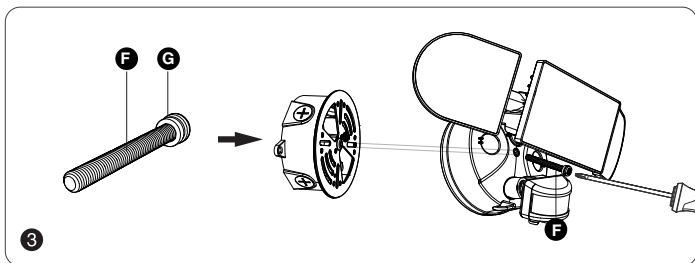
FROM FIXTURE

(L) BLACK
LIVE WIRE

FROM FIXTURE

(⏚) GREED
GROUND WIRE

FROM FIXTURE



Note:

The raised part (RA) of the metal plate must be engaged with the recessed part (RE) of the base, otherwise it cannot be installed.

Troubleshooting

Malfunction	Cause	Remedy
LED senses a movement, the light does not light up	<ol style="list-style-type: none">1. The light is not energized2. Other surrounding light sources make the light misjudge it as daytime3. During the day, the brightness is in night mode4. Internal wiring is loose	<ol style="list-style-type: none">1. Check power-on status2. Turn off the nearby lights or sensor head to other directions3. Reset4. Rewiring after power failure
LED sensor light did not go out, continued to light up	Continuous movement within the sensing range	Check the relevant area and retune or override the sensor head if necessary
LED sensor light illuminates during the day	The shadows around the sensor make it mistakenly think it's night	<ol style="list-style-type: none">1. Do not cover the sensor head2. Place the light in a place where the light is bright enough during the day
LED sensor light flashing	Surrounded by other unstable light sources shining onto the induction	Avoid being exposed to such light sources
LED lights turn on unexpectedly	<ol style="list-style-type: none">1. Wind blows the branches and bushes within the sensing range2. Sensing cars on the road3. Sudden temperature change due to climate factors or fans, exhaust from open windows	<ol style="list-style-type: none">1. Adjust its scope2. Adjust its scope3. Change irradiation area

Manufacturer / Hersteller:

Shen Zhen Shi Meng Zhi Tuo Ke Ji You Xian Gong Si

Address: qian wan yi lu 1 hao A dong 201 shi qian hai shen gang he zuo qu Shen Zhen, Guang Dong, 518000, CN

support@onforuled.com www.onforuleds.com

EU REP MDH LIGHTING LTD

Suite 302, 292 Strovolos Avenue, 2048 Strovolos
Nicosia, Cyprus | support@onforuled.com

UK REP MDH LIGHTING LTD

69 Aberdeen Avenue, Cambridge CB2 8DL,
United Kingdom | support@onforuled.com

Made in China

UK
CA

CE

