

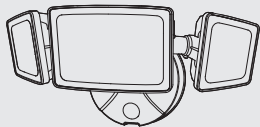
LED WALL LAMP

Quick Start Guide

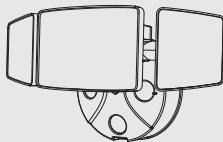
MODEL: BDB55-3 BDJ55-3 BDL40-3
 BDI45-2 BDC80-3 BDD100-3

COMPONENTS AND STRUCTURE

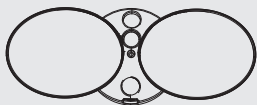
BDB55-3



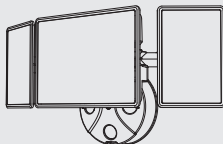
BDJ55-3



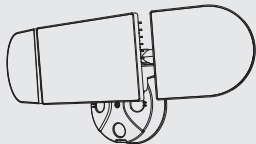
BDI45-2



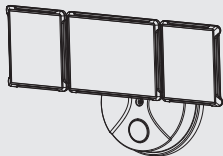
BDC80-3



BDD100-3



BDL40-3



PARTS LIST



A Machine Screw
QTY: 3



B Expansion Rubber Plug
QTY: 3



C EVA Gasket
QTY: 1



D Mounting Bracket
QTY: 1



E Wire Nuts
QTY: 3



F Long Machine Screw
QTY: 1



G Silicone Gasket
QTY: 1



H Machine Screw
QTY: 2



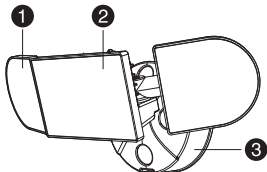
I Machine Screw
QTY: 2

SPECIFICATIONS

LED WALL LAMP						
Model	BDB55-3	BDJ55-3	BDI45-2	BDC80-3	BDD100-3	BDL40-3
Input Current	0.5A	0.5A	0.38A	0.58A	0.83A	0.35A
Rated Power	55W	55W	45W	70W	100W	40W
Luminous Flux	5500lm	5500lm	4000lm	6200lm	9000lm	4000lm
Input Voltage	100-120V ~ 60Hz					
CCT	6500K					
CRI	≥80					
Power Factor	≥0.9					
L _{70B50} lifetime	30000hours L _{70B50} @ 25°					
Beam Angle	120°					
t _a	-20-40°C/-4°F-104°F					
Luminaire Location	SUITABLE FOR WET LOCATIONS					

SPECIFICATIONS

DIMENSIONS			
Model	BDB55-3	BDJ55-3	BDI45-2
Dimensions (LxHxW)	272x123x121mm/ 10.71x4.84x4.76 in	270x152x109 mm/ 10.63x5.98x4.29 in	256x140x145 mm/ 10.08x5.5x5.7 in
Weight	0.9 kg/1.98 lb	0.83 kg/1.83 lb	0.9 kg/1.98 lb
Max Projected Area	0.0214m ² /0.23ft ²	0.0214m ² /0.23ft ²	0.286m ² /0.307ft ²
Max. Lighting Coverage	90m ² /968ft ²	90m ² /968ft ²	70m ² /753ft ²
Model	BDC80-3	BDD100-3	BDL40-3
Dimensions (LxHxW)	365x195x118 mm/ 14.4x7.67x4.64 in	455x182x120 mm/ 17.9x7.16x4.72 in	279x136x118 mm/ 10.98x5.35x4.64 in
Weight	1.2 kg/2.64 lb	1.45 kg/3.2 lb	0.68 kg/1.5 lb
Max Projected Area	0.044m ² /0.47ft ²	0.049m ² /0.52ft ²	0.022m ² /0.23ft ²
Max. Lighting Coverage	115m ² /1237ft ²	160m ² /1722ft ²	60m ² /645ft ²
<p>Note: The testing standard of the product's luminous flux: Place the three/two lights on the same horizontal surface for testing, and the tested luminous flux is the accurate luminous flux.</p>			



1. Cover
2. LED Light Source
3. Lamp Bracket

PREPARATION

NOTE:

Before beginning assembly of product, make sure all parts are present. Compare parts with parts list. If any part is missing or damaged, do not attempt to assemble the product.
Estimated Assembly Time: 30-60 minutes.

Recommended to be installed on the ground above 2.5m (8.2 ft) and no higher than 5 m (16.4 ft).

Product appearance may vary from image shown.

TOOLS REQUIRED (not included)



Flathead
screwdriver



screwdriver



Silicone Sealant



Eye Protection



Pliers



Step Ladder

WARNING:

THIS PRODUCT MUST BE INSTALLED IN ACCORDANCE WITH THE APPLICABLE INSTALLATION CODE BY A PERSON FAMILIAR WITH THE CONSTRUCTION AND OPERATION OF THE PRODUCT AND THE HAZARDS INVOLVED.

CAUTION:

PLEASE MAKE SURE YOUR WALL SWITCH AND POWER AT MAIN CIRCUIT BREAKER BOTH ARE OFF.

IF IN DOUBT ABOUT ELECTRICAL INSTALLATION, CONSULT A LICENSED ELECTRICIAN.

PREPARATION

RISK OF SHOCK:

BEFORE BEGINNING INSTALLATION, TURN OFF ELECTRICITY AT THE CIRCUIT BREAKER BOX OR THE MAIN FUSE BOX.

NOTE:

BE SURE TO USE WIRE NUTS/CONNECTORS RATED FOR THE CORRECT GAUGE AND NUMBER OF WIRES USED.

MAKE SURE THERE ARE NO EXPOSED WIRE BUNDLES OUTSIDE THE WIRE NUT/CONNECTOR (IF APPLICABLE).

BE CAREFUL NOT TO DAMAGE OR CUT THE WIRE INSULATION (COVERING) DURING INSTALLATION. DO NOT LET THE WIRES TOUCH ANY SHARP EDGES.

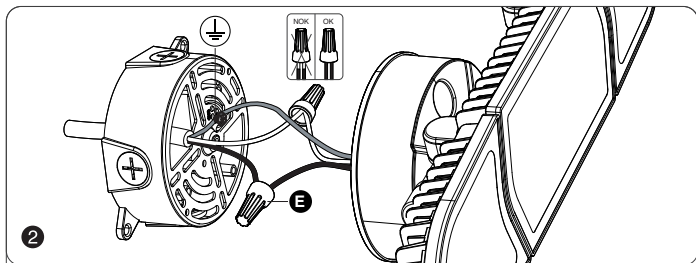
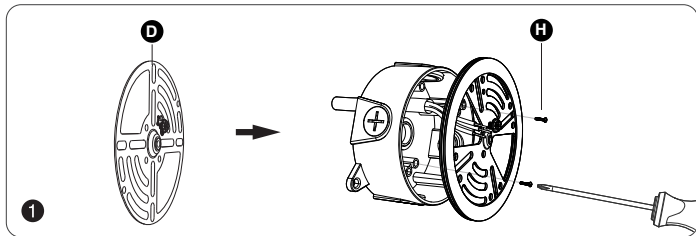
WARNING:

DO NOT CONNECT THIS LIGHT FIXTURE TO AN UNGROUNDED ELECTRICAL SYSTEM. ATTACH GROUND FIXTURE WIRE TO EITHER GREEN GROUND SCREW ON MOUNTING PLATE OR THE GROUND WIRE IN THE OUTLET BOX.

INSTALLING THIS LIGHT IN AN UNGROUNDED ELECTRICAL SYSTEM MAY CAUSE THE METAL PARTS OF THE LIGHT TO CARRY CURRENT IF ANY WIRES OR WIRE CONNECTIONS ARE DAMAGED OR LOOSE. IN THIS CASE, ANYONE WHO TOUCHES THE LIGHT WILL RECEIVE AN ELECTRIC SHOCK, RESULTING IN INJURY OR DEATH.

INSTALLATION STEPS

FOR WET LOCATION, MAKE SURE FILL FULL THE GAP OF EVA GASKET AND MOUNTING SURFACE WITH SEALING COMPOUND OR SILICON GLUE.



WHITE
NEUTRAL LINE

FROM HOUSE

BLACK
LIVE WIRE

FROM HOUSE

GREED
GROUND WIRE

FROM HOUSE

(N) WHITE
NEUTRAL LINE

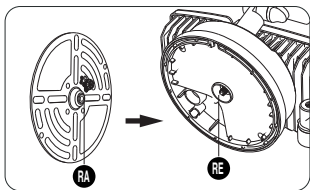
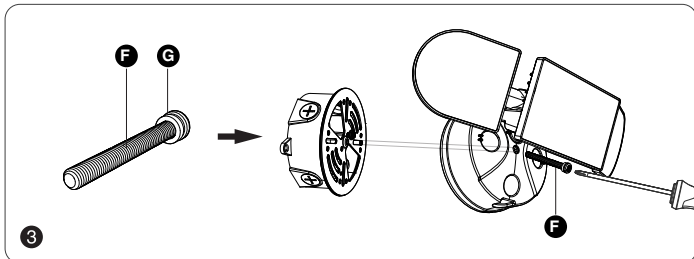
FROM FIXTURE

(L) BLACK
LIVE WIRE

FROM FIXTURE

(⏏) GREED
GROUND WIRE

FROM FIXTURE



Note:

The raised part (RA) of the metal plate must be engaged with the recessed part (RE) of the base, otherwise it cannot be installed.

Manufacturer / Hersteller:

Shen Zhen Shi Meng Zhi Tuo Ke Ji You Xian Gong Si

Address: qian wan yi lu 1 hao A dong 201 shi qian hai shen gang he zuo qu Shen Zhen, Guang Dong, 518000, CN

support@onforuled.com www.onforuleds.com

EU REP MDH LIGHTING LTD
Suite 302, 292 Strovolos Avenue, 2048 Strovolos
Nicosia, Cyprus | support@onforuled.com

UK REP MDH LIGHTING LTD
69 Aberdeen Avenue, Cambridge CB2 8DL,
United Kingdom | support@onforuled.com

Made in China

