

X-SENSE 深圳市安室智能有限公司	料号	F.1.05.XP0202	版本号	V1.1
	品名	XP02-WR-英语说明书-美规	设计师	刘晓宇
	材质	70g 书纸	日期	2023/08/11
	工艺	骑马订, 双面单黑印刷		
	尺寸	115 × 115mm		
	公差	± 1 mm		

设计尺寸为125*125mm
实际做货需缩放至 115*115mm

此页无需印刷



Wireless Interlinked Combination Smoke and Carbon Monoxide Alarm with Voice and Location

User Manual

Model: XP02-WR



This user manual contains important information about your combination smoke and carbon monoxide alarm's operation. To ensure proper use and trouble-free operation, please read this manual carefully and store it in a safe place for future reference.

Introduction

All X-Sense combination smoke and carbon monoxide alarms conform with regulatory requirements, including UL 217 and UL 2034 standards and are designed to detect both smoke and carbon monoxide.

This unit adopts photoelectric technology to detect smoke which is generally more sensitive than ionization technology. It is effective at detecting large particles, which tend to be produced in greater amounts by smoldering fires. These types of fires may smolder for hours before bursting into flame. Sources of these fires may include cigarettes burning in couches or bedding.

Carbon monoxide (CO) is odorless, tasteless and invisible - it's a silent killer. Using electrochemical sensing technology, this unit can detect increased levels of carbon monoxide early, protecting your family from the dangers of carbon monoxide.

- The installation of the apparatus should not be used as a substitute for proper installation, use and maintenance of fuel-burning appliances including appropriate ventilation and exhaust systems.
- This apparatus is to be installed by a competent person.
- It is not tested for use in a caravan or boat.

Note: For maximum protection, use smoke and CO alarms on each level and in every bedroom of your home.

Package Contents

- 1 × Alarm Unit
- 1 × Mounting Bracket
- 3 × Screws
- 3 × Anchor Plugs
- 1 × User Manual
- 2 × Carbon Monoxide Safety Stickers

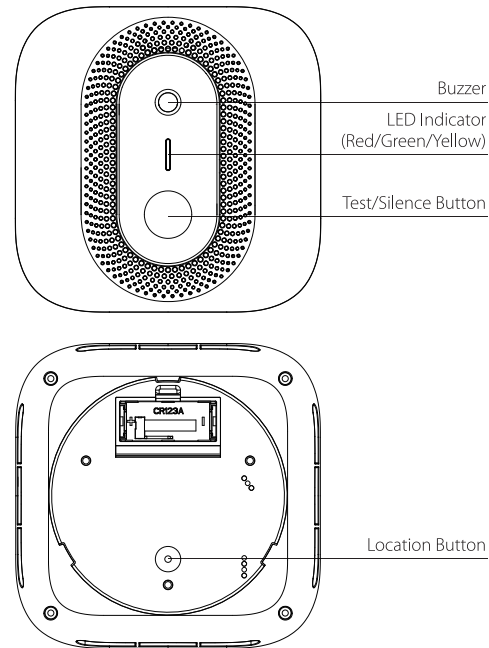
Technical Specifications

Power Supply	CR123A lithium battery (replaceable)
Battery Life	5 years
Sensor Type	Smoke: Photoelectric
	CO: Electrochemical
Safety Standards	UL 217 and UL 2034
CO Sensitivity	70 ppm for 60–240 minutes
	150 ppm for 10–50 minutes
	400 ppm for 4–15 minutes
Operating Temperature	40–100°F (4.4–37.8°C)
Operating Relative Humidity	10%–85% RH (non-condensing)
Alarm Loudness	≥ 85 dB at 10 ft (3 m) @ 3.2 ± 0.3 kHz pulsing alarm
Silence Duration	≤ 9 minutes
Operating Frequency	915 MHz
Maximum Number of Interconnected Units	24 wireless units (only compatible with X-Sense wireless alarms)
Transmission Range	Over 1,700 ft (500 m) in open air

Product Overview

IMPORTANT

THIS SMOKE AND CO ALARM IS DESIGNED FOR INDOOR USE ONLY. DO NOT EXPOSE TO RAIN OR MOISTURE. DO NOT KNOCK OR DROP THE ALARM. DO NOT OPEN OR TAMPER WITH THE ALARM AS THIS COULD CAUSE MALFUNCTION.



Powering On Before Setting the Location

For first-time use, simply remove the battery insulation film from the battery compartment to turn on the device. After the device is powered on, the device will say "Hello from X-Sense." Then, the device will say "Location not set. Press the Location button to select a location." If the device's batteries have been replaced, and the location has been set, then the device will say "Press the Test/Silence button to test." During this voice report process, if you press the test/silence button, there will be no response.

Setting the Location

Please follow the steps below to set the device location so that it is accurate to the actual installation location. When danger occurs, the alarm will say **"Warning! Smoke detected in location. Evacuate."** or **"Warning! Carbon monoxide detected in location. Move to fresh air."**

When one XP02-WR in the interlinked network is triggered, all XP02-WR devices in the network will report the same location, allowing you to know the location of the fire immediately. For example: You have set the location of device A to "Basement," device B to "Kitchen," and device C to "Office." Because they are all in a wireless interlinked network, if device A is triggered by smoke, all three devices A, B, and C will say "Warning! Smoke detected in Basement. Evacuate."

1. After the device is powered on and the voice is finished, press the Location button. If the location has not been set, the device will say **"Location not set. Press the Location button again to select a location."** If the location has been set, the device will say **"Location set. Press the Location button again to change the set location."**
2. After step 1, press the Location button again. The device will say **"Press the Location button for the next location. Quickly press the Location button twice for the last location. Hold down the Location button to save the location."**
3. After step 2, press the Location button again. The device will say **"Entryway."**
4. **After entering the location list, press the location button for the next location. Quickly press the Location button twice for the last location. Hold down the Location button to save the location.**
5. The location list will repeat. When the device says "No location," press the location button again, and "Entryway" will be reported again.
6. When the location is saved, the device will say **"Location saved."**
7. There is a 1-minute timeout limit when the product is in setting mode. If there is no operation within 1 minute, it will automatically exit and return to standby mode, and will say **"Unable to set the location. Please try it again."**

Location List

1	Entryway	7	Master bedroom	13	Office
2	Basement	8	Kids room	14	Workshop
3	Living room	9	Guest room	15	Utility room
4	Dining room	10	Den	16	Attic
5	Kitchen	11	Family room	17	No location
6	Hallway	12	Study		

Test/Silence Button

The Test/Silence button is used to test the unit's electronics and to silence the unit during an alarm.

When testing the alarm weekly, briefly press the test button for about 5 seconds to test a single alarm and the device will have a voice alarm. Press and hold the test button on one of the devices to test the interconnected alarms. The initiating unit will beep continuously with the LED flashing red. Other interconnected alarms in the network will beep continuously with the LED flashing red and green successively.

Please refer to the "Alarm Test" section for further information. The alarm goes back to the standby mode after testing.

Note: *After a test has begun, the alarm will sound and the LED will flash red. This does not indicate that smoke/CO is present.*

Silence Mode

Smoke Silence Mode: Press the test button during an alarm to have the unit enter silence mode. If the smoke concentration has reached an alarm level, after the silence time has expired, this unit will continue to alarm until the smoke concentration decreases to a safe, low level. Otherwise, the unit will exit from silence mode after 9 minutes.

CO Silence Mode: Press the test button during an alarm to have the unit enter silence mode. If the CO density still exceeds the alarm threshold, the unit will re-enter alarm state. Otherwise, the unit will exit the silence mode after 9 minutes and resume normal operation.

NOTES

1. *You can silence all interconnected units by pressing the Test/Silence button on one of the units. If one unit is still alarming, it is the initiating unit (the unit that detected danger); to silence all interlinked units, you must also press the Test/Silence button on the initiating unit.*

2. *While interconnected, the initiating unit cannot be triggered again during the 9-minute silence duration. However, all other interconnected units can be triggered again if they detect danger during the silence mode.*

Low Battery

The LED indicator will flash yellow together with one beep every 60 seconds. The device will say "Caution. Low battery. Replace the battery now."

(If you press the test button when there is low battery, the low battery signal will temporarily cease for 10 hours.)

End of Life

Once the maximum lifetime is reached, the alarm delivers 3 beeps and the LED indicator will flash yellow 3 times every 60 seconds. This end-of-life signal can be temporarily silenced for 22 hours by pressing the test button. The device will say "Caution. The alarm has reached the end of its lifetime. Replace the device now."

The end-of-life silence feature can only be used for a total of 30 days. After 30 days, the end-of-life signal cannot be silenced.

LED Indicator and Voice Guide

Mode	LED Indicator	Voice Guide	Remarks
Powering On	Runs through 8 cycles (yellow/green/red) in sequence.	First-time use.	"Hello from X-Sense." "Location not set. Press the Location button to select a location." When the LED stops flashing, the voice guide will give instructions.
		Batteries are replaced.	"Press the Test/Silence button to test."
Setting Location	Flashes red once every 3 seconds.	Location not set.	Press down the Location Button. After the voice guide has ended, the LED will flash red every 3 seconds to indicate that the device is currently in the location setting mode, and the LED will continue to flash until it returns to standby mode.
		Location set.	"Location set. Press the Location button again to change the set location."
Standby Mode	Flashes green once every 60 seconds.	None.	None.
Alarm Mode	Unit detected smoke and initiated an alarm. Flashes red 3 times every 4 seconds.	"Warning. Smoke detected in location. Evacuate."	Dangerous smoke concentration is detected. Open nearby windows and doors, and immediately move to fresh air.

	Unit detected CO and initiated an alarm.	A CO concentration ranging from 30 to 999 ppm has been present for a certain time period. The LED indicator flashes red 4 times every 5.8 seconds.	"Warning. Carbon monoxide detected in location. Move to fresh air."	Dangerous CO concentration is detected, and has reached the alarm status. Open nearby windows and doors, and immediately move to fresh air.
	Smoke/CO concentration level drops.	Flashes green once every second for 5 seconds.	"Danger cleared."	Alarm cancellation: when the smoke/CO concentration level drops below the alarm threshold, the alarm signal will stop.
	All other interconnected units in the network.	Flashes red and green 3 times sequentially every 4 seconds.	"Warning. Smoke detected. in location. Evacuate."	Dangerous smoke concentration is detected by the initiating unit in the network. Please find the initiating unit and take action.
		The LED flashes red 4 times, then the LED flashes green once every 5.8 seconds.	"Warning. Carbon monoxide detected. in location. Move to fresh air."	Dangerous CO concentration is detected by the initiating unit, and has reached the alarm status. Please find the initiating unit and take action.
Test Mode	Test a single unit.	2 sets of 3 red flashes followed by 2 sets of 4 red flashes.	"This is only a test. The alarm will sound loudly. You can press the Test/Silence button to cancel the test." "Testing the smoke sensor." "Testing the carbon monoxide sensor." "The test is finished." "Normal working status." "Caution. Low battery. Replace the battery now."	Short press the Test/Silence button. Normal functioning. Low battery.

			"Caution. Smoke sensor malfunction. Replace the device now."	Smoke sensor malfunction.
			"Caution. Carbon monoxide sensor malfunction. Replace the device now."	Carbon monoxide sensor malfunction.
	Test all interconnected units.	Flashes red rapidly.	Only beeps and no voice.	Initiating alarm. Hold down the Test/Silence button on one unit in the network.
		Flashes red and green sequentially.		Other interconnected alarms in the network.
Silence Mode		Flashes red 3 times every 4 seconds.	"Smoke alarm silenced."	Smoke silence mode: After 9 minutes, the unit will exit silence mode.
			"This alarm cannot be silenced. Smoke levels too high."	When the smoke concentration is too high, the sound cannot be muted by pressing the test button.
		Flashes red 4 times every 5.8 seconds.	"Carbon monoxide alarm silenced."	CO silence mode: After 9 minutes, the unit will exit silence mode.
			"This alarm cannot be silenced. Carbon monoxide levels too high."	When the CO concentration is too high, the sound cannot be muted by pressing the test button.
		Flashes yellow once every 60 seconds.	"Temporarily silenced."	Silence mode during low battery: After 10 hours, the unit will exit silence mode.
		Flashes yellow 3 times every 60 seconds.	"Temporarily silenced."	Silence mode during the end of cycle: After 22 hours, the unit will exit silence mode.
		Flashes green 3 times.	None.	Exiting silence mode.

Low Battery	Flashes yellow once every 60 seconds.	"Caution. Low battery. Replace the battery now."	Replace the unit immediately.
Fault	Flashes yellow 2 times every 60 seconds.	"Caution. Carbon monoxide sensor malfunction. Replace the device now."	Please clean your alarm and see if it is working normally. If the unit has malfunctioned, it must be replaced immediately.
		"Caution. Smoke sensor malfunction. Replace the device now."	
End of Life	Flashes yellow 3 times every 60 seconds.	"Caution. The alarm has reached the end of its lifetime. Replace the device now."	Replace the unit immediately.

How to Set Up and Interconnect Wireless Alarms

All X-Sense Link⁺ wireless interlinked alarms contain a built-in RF module that enables you to wirelessly connect 2 or more interlinked alarms and create an interlinked network. When one unit is triggered, all interconnected alarms will sound. The X-Sense Link⁺ series contain wireless interlinked smoke alarms, wireless interlinked carbon monoxide alarms, and wireless interlinked smoke and carbon monoxide alarms. This model is designed to be wirelessly interlinked with other X-Sense Link⁺ alarms, but is not designed to communicate with wireless interlinked alarms from other manufacturers.

The X-Sense Link⁺ wireless interlinked alarms in one multi-pack have already been interconnected, and the alarms in each multi-pack have their own independent interlinked network. If you have more than one multi-pack, you will need to connect them all to the same network. Choose one multi-pack as your base network and connect the other multi-packs to it.

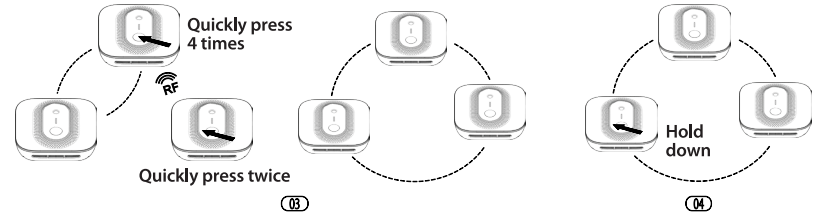
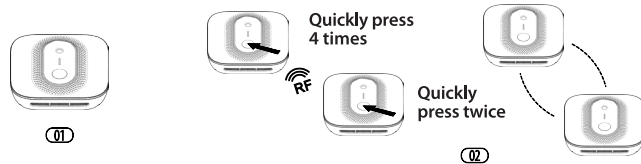
NOTE: The following instructions regarding wireless interconnection are applicable to the X-Sense Link⁺ wireless interlinked alarms only.

How to Interconnect

1. Make sure you only work with 2 units at a time, and make sure that they are both turned on to ensure successful connection.

NOTE: To turn on the XP02-WR, remove the battery insulating film from the battery compartment. To learn how to turn on different models of wireless interlinked alarms, please refer to their specific user manual for more details.

2. Quickly press the Test/Silence button on one of the 2 units 4 times. The device will say "Searching for a new device"; it will beep once and the LED will flash red slowly, indicating it has entered pairing mode and is waiting for a new unit to be added. Quickly press the Test/Silence button on the other unit twice. The device will say, "Ready to connect" then beep once and the LED will flash red rapidly, indicating it is searching for a device to connect to.
3. After the search is successful, and an interconnected group is created, both units will say "Connected," then beep once and automatically exit the pairing mode. At this point, both units will only flash once 60 seconds, indicating they are in normal standby mode.
4. If you want to connect a third alarm to this group, first activate a new device according to its operating instructions, and then quickly press the Test/Silence button on either of the 2 previously interconnected units 4 times. The unit will say "Searching for a new device," beep once, then the LED will flash red slowly, indicating it is ready to add a new device to the network. Next, quickly press the Test/Silence button on the new unit twice, the unit will say "Ready to connect," and the LED will flash red rapidly as it searches for a network to connect to. After the third unit successfully joins the interconnected network, both units will say "Connected," beep once, then automatically exit the interconnection mode.
5. If you want to connect more units, simply repeat step 4. Up to 24 alarms can be interconnected this way.
To ensure that all alarms enter the same interlinked network, make sure you only work with 2 units at a time—one unit enters the pairing mode and the other unit enters the searching mode.
6. Test the alarms according to the steps in the section "Alarm Test."



NOTES

1. The alarm will enter the searching mode or the pairing mode for 60 seconds with the LED flashing red. After 60 seconds, repeat step 2 to connect the alarms. If needed, press the Test/Silence button once while the alarm is in the searching mode or the pairing mode, and the LED will stop flashing red and the alarm will quit the pairing mode to enter normal status.
2. Test all wireless alarms to ensure they are interconnected before installation.
3. A maximum of 24 wireless alarms can be interconnected on the same network.
4. The model can only be interconnected with the same model and other X-Sense Link* wireless interlinked alarms.

How to Disconnect

Quickly press the Test/Silence button 4 times, the alarm will say "Searching for a new device" and beep once. Then, hold down the button until it says "Disconnected, standalone device now" and beeps once more to disconnect. After disconnecting, it can be reconnected to the same network, or added to a new network.

NOTE: The X-Sense Link* wireless interlinked alarms in one multi-pack have already been interconnected. To create a new network, you will first need to disconnect each alarm individually in this multi-pack to avoid having them all join the same network.

Alarm Mode

X-Sense Link* wireless interlinked alarms can be interconnected such that any unit that senses danger will cause all other units in the interconnected network to alarm.

1. If the Initiating Unit Is Triggered by Smoke:

When a smoke alarm is triggered in the interconnected network, the unit will say "Warning! Smoke detected in location. Evacuate!" and beep 3 times, paired with the LED flashing red every 4 seconds. Any other units in the network will follow suit—they will beep 3 times every 4 seconds, paired with the LED flashing red and green in succession. When the smoke concentration level drops below the alarm threshold, the alarm will cease.

2. If the Initiating Unit Is Triggered by CO:

When a CO alarm is triggered in the interconnected network, the unit will say "Warning! Carbon monoxide detected in location. Move to fresh air!" and beep 4 times every 5.8 seconds, paired with the LED flashing red. Any other units in the network will follow suit—they will beep 4 times every 5.8 seconds, paired with the LED that flashes red 4 times first, followed by the LED that flashes green once with every beep. When the CO concentration level drops below the alarm threshold, the alarm will cease.

NOTES

- When one unit is triggered, other interconnected units will sound. If the smoke alarm and CO alarm are triggered in the network at the same time, the alarm signal of the smoke alarm will take priority over that of the CO alarm.
- If the initiating alarm is an XP02-WR alarm, the other interconnected XP02-WR alarms will report a voice with location; if the initiating alarm is not an XP02-WR alarm, the other interconnected XP02-WR alarms will still report a voice but without location.
- This alarm has a relay function that extends the wireless interconnected network for wide detection coverage.

Alarm Test

Be sure to test your CO alarms when you turn them on for the first time, or if the group configuration has changed. In addition to the weekly tests you should perform, it is recommended to test the alarm after returning from a long trip or vacation.

If your X-Sense Link® XP02-WR is interconnected to other X-Sense wireless alarms, we recommend that every individual CO alarm be tested during the weekly test.

	Test a Single Alarm	Test All Interconnected Alarms
Action	Short press the Test/Silence button.	Hold down the Test/Silence button for about 5 seconds.
Indication	<ul style="list-style-type: none">• The alarm has a voice alarm. Please refer to the "LED Indicator and Voice Guide" part for more details.• The alarm will emit 2 sets of 3 long beeps followed by 2 sets of 4 quick beeps.• The LED will flash red during the audible signal.• After testing, the alarm will automatically enter standby mode.	<ul style="list-style-type: none">• The initiating unit will beep continuously with the LED flashing red.• Other interconnected alarms in the network will receive the signal after 5 seconds, then they will beep continuously with the LED flashing red and green successively. Release the Test/Silence button and all the units will stop testing.• The units testing should be completed within 3 minutes.• After testing, the units will automatically enter standby mode.

NOTE: The test function accurately tests the alarm's circuits without the need to test with smoke and CO. If your alarm fails to give an audible test signal, please refer immediately to the troubleshooting guide at the end of this manual.

Basic Safety Information

IMPORTANT

1. DANGERS, WARNINGS, AND CAUTIONS ALERT YOU TO IMPORTANT OPERATING INSTRUCTIONS OR TO POTENTIALLY HAZARDOUS SITUATIONS. PAY SPECIAL ATTENTION TO THESE SITUATIONS.
2. THIS COMBINATION SMOKE & CARBON MONOXIDE ALARM IS ONLY APPROVED FOR HOME USE.
3. THIS CARBON MONOXIDE ALARM IS DESIGNED TO DETECT CARBON MONOXIDE FROM ANY SOURCE OF COMBUSTION.
4. CONSTANT EXPOSURES TO HIGH OR LOW HUMIDITY MAY REDUCE BATTERY LIFE.
5. SMOKE ALARMS ARE NOT TO BE USED WITH DETECTOR GUARDS UNLESS THE COMBINATION HAS BEEN EVALUATED AND FOUND SUITABLE FOR THAT PURPOSE.

CAUTION

THIS SMOKE & CARBON MONOXIDE ALARM HAS TWO SEPARATE ALARMS WHICH WORK INDEPENDENTLY. THE CARBON MONOXIDE ALARM IS NOT DESIGNED TO DETECT FIRE OR ANY OTHER GAS. IT WILL ONLY INDICATE THE PRESENCE OF CARBON MONOXIDE GAS AT THE SENSOR. CARBON MONOXIDE GAS MAY BE PRESENT IN OTHER AREAS. THE SMOKE ALARM WILL ONLY INDICATE THE PRESENCE OF SMOKE THAT REACHES THE SENSOR. THE SMOKE ALARM IS NOT DESIGNED TO DETECT GAS, HEAT OR FLAMES.

WARNING

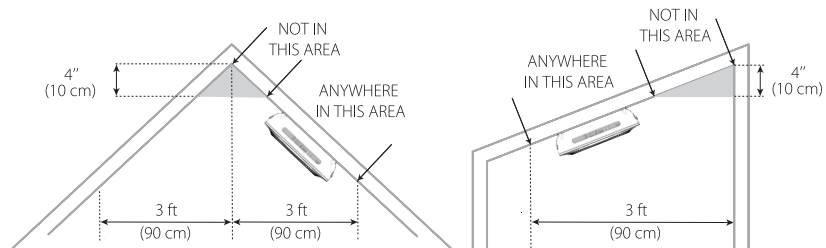
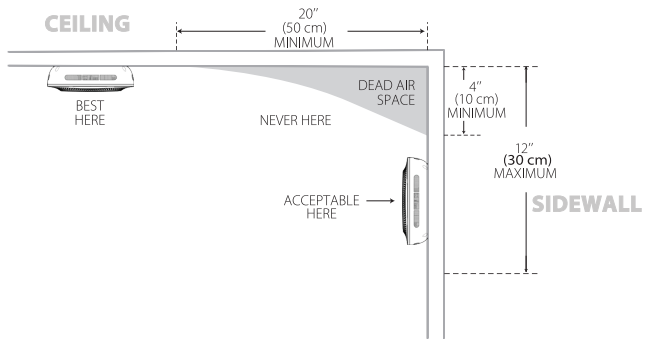
1. NEVER IGNORE ANY ALARM. FAILURE TO RESPOND CAN RESULT IN SERIOUS INJURY OR DEATH.
2. THE SILENCE FEATURE IS ONLY FOR YOUR CONVENIENCE AND WILL NOT CORRECT A PROBLEM. ALWAYS CHECK YOUR HOME FOR A POTENTIAL PROBLEM AFTER ANY ALARM. FAILURE TO DO SO CAN RESULT IN INJURY OR DEATH.
3. TEST THIS SMOKE/CO ALARM ONCE A WEEK. IF THE ALARM EVER FAILS TO TEST CORRECTLY, REPLACE IT IMMEDIATELY! IF THE ALARM CANNOT WORK PROPERLY, IT WILL NOT ALERT YOU TO A PROBLEM.
4. THIS PRODUCT IS INTENDED FOR USE IN ORDINARY INDOOR LOCATIONS OF FAMILY LIVING UNITS. IT IS NOT DESIGNED TO MEASURE CO LEVELS IN COMPLIANCE WITH OCCUPATIONAL SAFETY AND HEALTH ADMINISTRATION (OSHA) COMMERCIAL OR INDUSTRIAL STANDARDS. INDIVIDUALS WITH MEDICAL CONDITIONS THAT MAY MAKE THEM MORE SENSITIVE TO CARBON MONOXIDE MAY CONSIDER USING WARNING DEVICES WHICH PROVIDE AUDIBLE AND VISUAL SIGNALS FOR CARBON MONOXIDE CONCENTRATIONS UNDER 30 PPM. FOR ADDITIONAL INFORMATION ON CARBON MONOXIDE AND YOUR MEDICAL CONDITION CONTACT YOUR PHYSICIAN.
5. THE REPLACEMENT DATE THAT APPEARS ON THE DEVICE IS THE DATE BEYOND WHICH THE DEVICE MAY NO LONGER DETECT CARBON MONOXIDE ACCURATELY AND SHOULD BE IMMEDIATELY REPLACED.
6. THIS DEVICE IS DESIGNED TO PROTECT INDIVIDUALS FROM THE ACUTE EFFECTS OF CARBON MONOXIDE EXPOSURE. IT MAY NOT FULLY SAFEGUARD INDIVIDUALS WITH SPECIFIC MEDICAL CONDITIONS. IF IN DOUBT, CONSULT A MEDICAL PRACTITIONER.

Installation Positioning

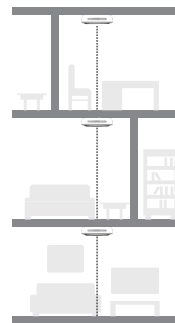
NOTE: Before installation, it is recommended to test the interconnected alarms in the rooms where you intend to install them to ensure that they are within transmission range and that nothing will interfere with their communication.

Installation Locations

1. Prioritize the installation of an alarm in the bedroom and walkways, and make sure you can hear the alarm from all sleeping areas. In a home with several bedrooms, install an alarm in every bedroom. If you install only one smoke alarm in your home, install the alarm near to all bedrooms where possible, and not in a basement or furnace room.
2. Install an alarm above the stairway and on every floor of the house.
3. Smoke, heat and anything burning will spread horizontally after rising to the ceiling, so install the alarm in the middle of the ceiling where possible. Ensure the alarm is within working distance of all corners of the room.
4. If an alarm cannot be installed in the middle of a ceiling, install at a distance of 20 inches (50 cm) away from the corners of the room.
5. If an alarm is installed on a wall, it should be at a distance of 4-12 inches (10-30 cm) below the ceiling.
6. If the length of a room or hall is beyond 30 feet (900 cm), you will need to install several alarms in the same room.
7. When the wall or ceiling is angled, the alarm needs to be installed within 3 feet (90 cm) of the highest wall or ceiling point (measured horizontally) in the room.



8. In multi-level houses or apartments, install at least one wireless alarm on each level and keep them installed in a straight vertical line (see diagram) with as few obstacles between each of the interconnected alarms as possible to ensure optimal signal transmission.



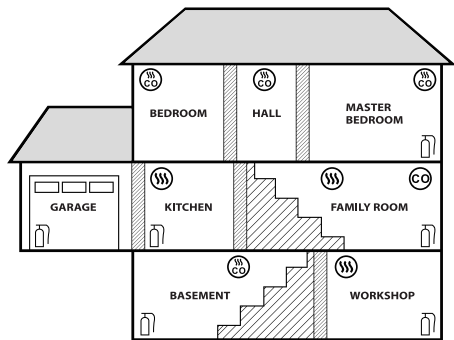
Locations to Avoid:

1. Near large metal surfaces and/or bundles of wire.
2. Near fluorescent lights, amateur radios, electrical equipment, or other devices that may transmit an RF signal, as electronic noise may cause nuisance alarms.

Recommended Placement

⚠️ WARNING

1. THIS ALARM SHOULD BE INSTALLED BY A COMPETENT PERSON.
2. INSTALLATION OF THE ALARM SHOULD NOT BE USED AS A SUBSTITUTE FOR PROPER INSTALLATION, USE AND MAINTENANCE OF FUEL BURNING APPLIANCES INCLUDING APPROPRIATE VENTILATION AND EXHAUST SYSTEMS.



FIRE EXTINGUISHERS



SMOKE ALARMS



CARBON MONOXIDE ALARMS



SMOKE & CO ALARMS

How to Install This Alarm

⚠️ IMPORTANT

THIS COMBINATION SMOKE/CO ALARM IS DESIGNED TO BE MOUNTED ON THE CEILING OR WALL.

⚠️ WARNING

FAILURE TO PROPERLY INSTALL AND ACTIVATE THIS ALARM WILL PREVENT PROPER OPERATION OF THE ALARM AND WILL PREVENT ITS RESPONSE TO FIRE HAZARDS OR CO.

Locations to Avoid

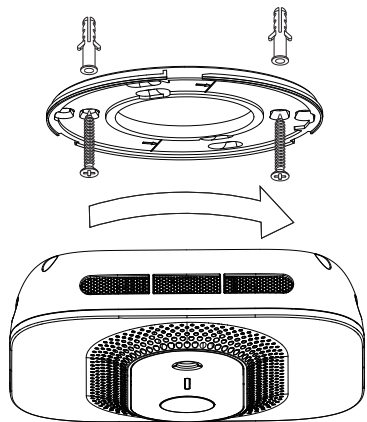
WARNING - This product is intended for use in ordinary indoor locations of family living units. It is not designed to measure CO levels in compliance with the Occupational Safety and Health Administration (OSHA) commercial or industrial standards.

1. Do not install in garages, kitchens, furnace rooms or bathrooms! Do not install within 5 ft (1.5 m) of cooking appliances.
2. Do not install within 3 ft (0.9 m) of the following: The door to a kitchen, or a bathroom that contains a tub or shower, forced air supply ducts used for heating or cooling, ceiling or whole house ventilating fans, or other high air flow areas. Avoid excessively dusty, dirty or greasy areas. Dust, grease or household chemicals can contaminate the alarm's sensors, causing the alarm to not operate properly.
3. Place the alarm where drapes or other objects will not block the sensors. Smoke and CO must be able to reach the sensors to accurately detect these conditions. Do not install in peaks of vaulted ceilings, "A" frame ceilings or gabled roofs. Keep out of damp and humid areas.
4. Install at least one (1) foot away from fluorescent lights, as electronic noise may cause nuisance alarms.
5. Do not place in direct sunlight and keep out of insect-infested areas. Extreme temperatures will affect the sensitivity of the smoke/CO alarm.
6. Do not install in areas where the temperature is colder than 40°F (4.4°C) or hotter than 100°F (37.8°C), such as garages and unfinished attics.
7. Do not install in areas where the relative humidity (RH) is above 85% or below 10%. Place away from doors and windows that open to the outside.
8. Smoke alarms are not to be used with detector guards unless the combination (alarm and guard) has been evaluated and found suitable for that purpose.

Mounting Steps

NOTE: Before installation, it is recommended to test the interconnected alarms in the rooms where you intend to install them to ensure they are within transmission range and that nothing will interfere with their communication.

1. Drill three Ø 6.0 mm holes in the wall or ceiling, then insert three plastic anchor plugs into the holes with a hammer.
2. Attach the mounting bracket to the surface of the wall or ceiling with three screws and mount the alarm into the bracket by pushing them together and twisting the unit clockwise.
3. Test the unit by using the Test/Silence button. Ensure the unit sounds in an alarm pattern.



Maintenance

To keep your smoke/CO alarm in good working order, follow these simple steps:

1. Verify the unit's alarm sound and indicators are working properly by testing the unit once a week.
2. Remove the unit from the ceiling/wall and clean the alarm cover and vents with a soft brush attachment once a month to remove dust and dirt.
3. Never use detergents or other solvents to clean the unit.
4. Avoid spraying air fresheners, hair spray or other aerosols near the alarm.
5. Do not paint the unit. Paint will seal the vents and interfere with the sensor's ability to detect smoke or CO. Never attempt to disassemble the unit or clean inside. Doing so will void your warranty.
6. When removed, place the smoke/CO alarm back in its proper location as soon as possible, to assure continuous protection from fire or carbon monoxide poisoning.
7. When household cleaning supplies or similar contaminants are used, the area should be ventilated.

What You Need to Know About CO

CO cannot be seen, smelled or tasted and can be fatal. The build-up of CO in the blood is called the carboxyhemoglobin (COHb) level and interferes with the body's ability to supply itself with oxygen. Depending on the concentration, CO can kill in minutes. The most common sources of CO are malfunctioning gas appliance used for heating and cooking, vehicles running in an attached garage, blocked chimneys or flues, portable fuel burning heaters, fireplaces, fuel powered tools and operating a grill in an enclosed space.

Indications of carbon monoxide poisoning include symptoms similar to the flu, but with no fever. Other symptoms include dizziness, fatigue, weakness, headache, nausea, vomiting, sleepiness and confusion. Everyone is susceptible to the danger of CO, but experts agree that unborn babies, small children, pregnant women, senior citizens and people with heart or respiratory problems are at the highest risk for serious injury or death. Every year a qualified technician should inspect and clean your heating system, vents, chimney, and flues.

The following symptoms are related to carbon monoxide poisoning and should be discussed with all members of the household:

Mild exposure: Slight headache, nausea, vomiting, fatigue (often described as "flu-like" symptoms).

Medium exposure: Severe throbbing headache, drowsiness, fast heart rate.

Extreme exposure: Unconsciousness, cardiorespiratory failure, death.

The above levels of exposure relate to healthy adults. Levels differ for those at high risk. Exposure to high levels of carbon monoxide can be fatal or cause permanent damage and disabilities. Many cases of reported carbon monoxide poisoning indicate that while victims are aware they are not well, they become so disoriented they are unable to save themselves by either exiting the building, or calling for assistance. Also, young children and household pets may be the first affected. Familiarization with the effects of each level is important.

Following Conditions Can Result in Transient CO Situations:

- Excessive spillage or reverse venting of fuel-burning appliances caused by outdoor ambient conditions, such as wind direction and/or velocity, including high gusts of wind, heavy air in the vent pipes (cold/humid air with extended periods between cycles).
- Negative pressure resulting from the use of exhaust fans.
- Simultaneous operation of several fuel-burning appliances competing for limited internal air.
- Vent pipe connections vibrating loose from clothes dryers, furnaces, or water heaters.
- Obstructions in, or unconventional, vent pipe designs which can amplify the above situations.

- Extended operation of unvented fuel-burning devices (range, oven, fireplace, etc.).
- Temperature inversions which can trap exhaust gases near the ground.
- A car idling in an open or closed attached garage, or near a home.

Troubleshooting

Problems	Cause	Solution
The device is not triggered when it is tested with smoke.	The smoke is not reaching the sensor properly.	The smoke needs to enter the smoke sensor from the metal mesh on the side to trigger the device.
	The time duration is insufficient for the device to detect smoke.	Continuous smoke is necessary for the device to be triggered. When smoke reaches the smoke sensor, the device will be triggered in about 20 seconds.
	The smoke concentration is low.	Sufficient smoke concentration is required for the smoke alarm to detect smoke. The greater the smoke concentration is, the faster the alarm will respond.
The alarm does not sound during a test.	The device does not turn on.	Remove the battery insulating film from the battery compartment to turn on the device.
	You don't push the Test/Silence button firmly.	Make sure you have pushed the Test/Silence button firmly.
	The device is improperly installed.	Check the installation positioning. The wireless signal might be blocked or out of range.
False alarms are triggered intermittently when residents are cooking, taking showers, etc.	The device is improperly installed.	Install the device far away from kitchen appliances, dusty places, shower areas, and locations where the temperature is over 100°F (37.8°C) or below 40°F (4.4°C). Check the location of your alarm (see " Installation Positioning ").
	The device is clogged by dirt and dust.	Clean the device periodically (see " Maintenance ").

When you press and hold the test button, only one alarm will sound, and the other alarms will not respond.	The devices are not interconnected.	If the devices are interconnected, pressing and holding the test button on one of the interconnected alarms will test all alarms.
		If the devices are not interconnected, or disconnected from the network, pressing and holding the test button will only test a single alarm.
When an alarm is triggered, there is no location voice.	The XP02-WR is not the initiating alarm.	If the XP02-WR is not the initiating alarm when interconnected with other X-Sense Link+® wireless alarms, it will only report the danger type but not the location.
The device does not report the location, and it only reports "Warning. Smoke detected. Evacuate." or "Warning. Carbon monoxide detected. Move to fresh air."	The location is not set for the initiating XP02-WR alarm.	Referring to the manual, set the location for each XP02-WR alarm based on the installation location.
	The initiating alarm is not the XP02-WR alarm.	When the XP02-WR is interconnected with other X-Sense Link+® alarms, if the initiating alarm does not support the voice location, the triggered XP02-WR will only report whether smoke or carbon monoxide is detected without the location.
When an alarm occurs, it is impossible to determine which device is the source alarm.	None.	Judge by the sound. Where the voice and location are reported is the location of the source alarm.
		Look at the LED light on the detector. The source alarm only flashes red, while the interlinked units flash red and green.
		Press the silence button on any unit. If all alarms are muted except the one you pressed, then that is the source alarm. However, if the one you pressed is muted, but one unit is still sounding, then the one still sounding is the source alarm.
The previous set location is forgotten.	None.	Remove the device from the mounting bracket and press the Location button on the back. Then the device will report the current location. If you need to reset the location, press the Location button again, and follow the instructions and voice prompts.

The LED flashes yellow once every 60 seconds with one beep.	Low battery.	The battery is low. Push the Test/Silence button once to silence for 10 hours. Replace the alarm immediately.
The LED flashes yellow 2 times every 60 seconds with 2 beeps.	Malfunction.	The alarm is malfunctioning. Please clean your alarm or push the Test/Silence button once to attempt to reset the unit. If the problem still occurs, replace the alarm immediately.
The LED flashes yellow 3 times every 60 seconds with 3 beeps.	End of life.	The maximum lifetime is reached. Push Test/Silence button once to silence for 22 hours. Replace the alarm immediately.

FCC Statement

This equipment has been tested and found to comply with the limits for a Class B digital device, pursuant to Part 15 of the FCC Rules. These limits are designed to provide reasonable protection against harmful interference in a residential installation. This equipment generates uses and can radiate radio frequency energy and, if not installed and used in accordance with the instructions, may cause harmful interference to radio communications. However, there is no guarantee that interference will not occur in a particular installation. If this equipment does cause harmful interference to radio or television reception, which can be determined by turning the equipment off and on, the user is encouraged to try to correct the interference by one or more of the following measures:

- Reorient or relocate the receiving antenna.
- Increase the separation between the equipment and receiver.
- Connect the equipment into an outlet on a circuit different from that to which the receiver is connected.
- Consult the dealer or an experienced radio/TV technician for help.

This device complies with part 15 of the FCC Rules. Operation is subject to the following two conditions: (1) This device may not cause harmful interference, and (2) this device must accept any interference received, including interference that may cause undesired operation.

Changes or modifications not expressly approved by the party responsible for compliance could void the user's authority to operate the equipment.

Environmental Protection

Waste electrical products should not be disposed of with household waste. Please recycle where facilities exist. Check with Local Authority or retailer for recycling advice.



Manufacturer and Service Information

X-Sense Innovations Co., Ltd.

Address: B4-503, Kexing Science Park, 15 Keyuan Road, Shenzhen, 518057, CHINA

Email: support@x-sense.com

