



SPEAR RUNNING BOARD

PART #: TAC-CA6-007

FITS:

- 2019-Up Chevy Silverado 1500 Regular Cab
- 2020-Up Chevy Silverado 2500-3500 Regular Cab
- 2019-Up GMC Sierra 1500 Regular Cab
- 2020-Up GMC Sierra 2500-3500 Regular Cab



60-120 min



Cutting Not Required



Drilling Not Required

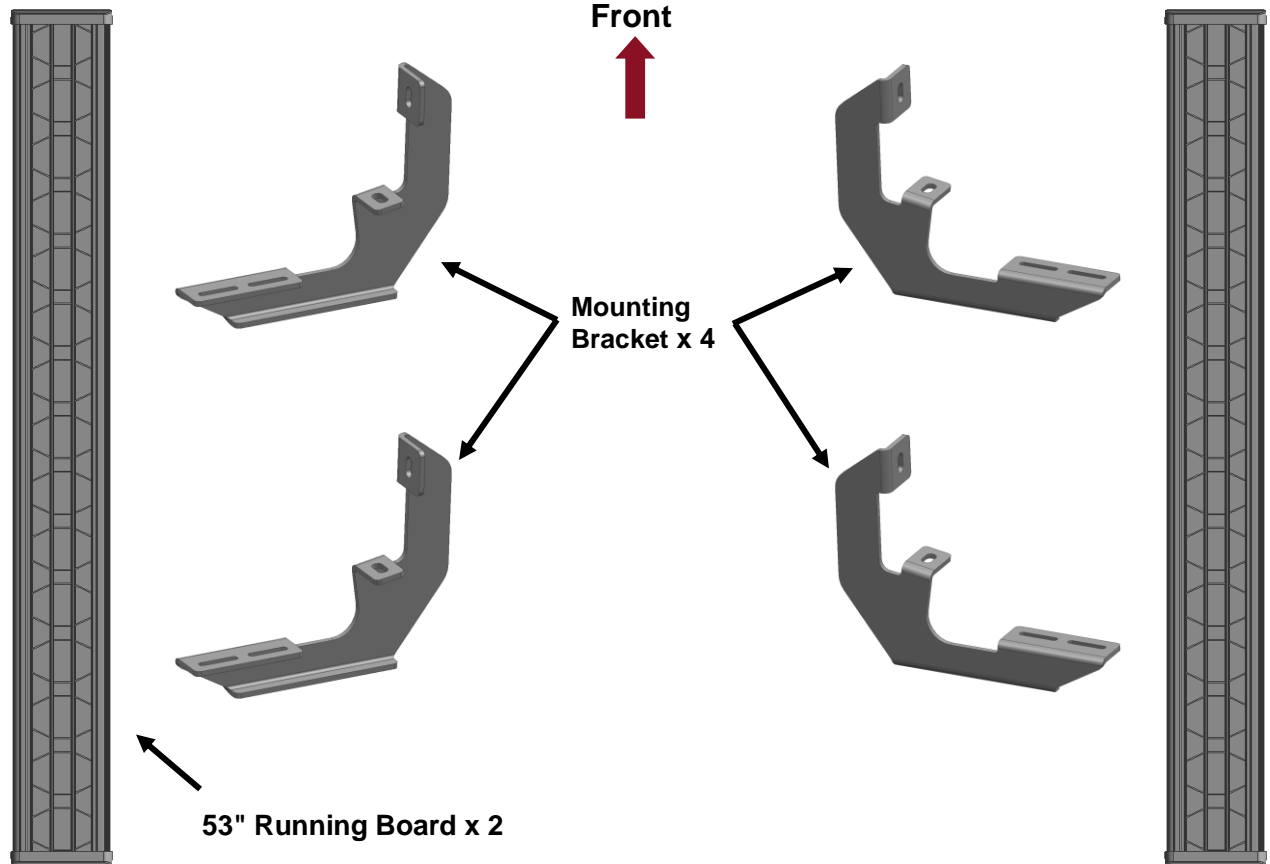
Torque & Tools

Fastener Size	Tightening Torque (ft-lbs)	Wrench Required	Allen Wrench Required
<input checked="" type="checkbox"/> 6mm	<input checked="" type="checkbox"/> 7-8.5		
<input checked="" type="checkbox"/> 8mm	<input checked="" type="checkbox"/> 18-20		
<input type="checkbox"/> 10mm	<input type="checkbox"/> 35-40		
<input type="checkbox"/> 12mm	<input type="checkbox"/> 60-70		
		<input checked="" type="checkbox"/> 10mm	<input type="checkbox"/> 4mm
		<input checked="" type="checkbox"/> 13mm	<input type="checkbox"/> 5mm
		<input type="checkbox"/> 16mm	<input type="checkbox"/> 6mm
		<input type="checkbox"/> 18mm	<input type="checkbox"/> 8mm

BEFORE INSTALLATION

REMOVE CONTENTS FROM BOX. VERIFY ALL PARTS ARE PRESENT. READ INSTRUCTIONS CAREFULLY BEFORE STARTING INSTALLATION. ASSISTANCE IS RECOMMENDED.

Part List





8mm x 30mm
Hex Bolt



8mm x 24mm
Flat Washer



8mm Lock
Washer



6mm x 20mm
T-Bolt



6mm x 22mm
Flat Washer



6mm Lock
Washer



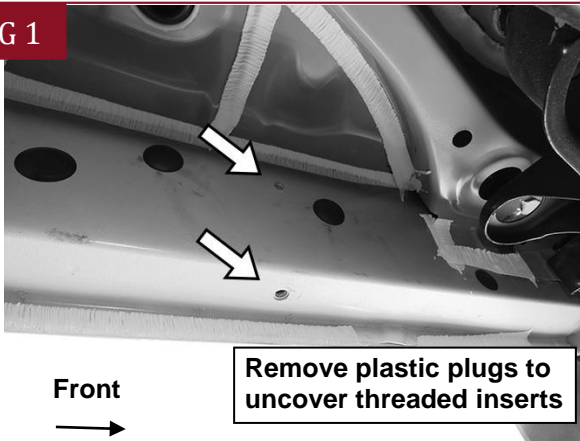
6mm Hex
Nut

PLEASE NOTE THAT THE FOLLOWING PICTURES ARE BASED ON THE DRIVER SIDE INSTALLATION

STEP 1

Start the installation under the Driver/Left side of the vehicle. Remove the plastic plugs along the bottom edge of the body, (**Fig 1**). Directly above each threaded insert is a top mounting location on the side of the body panel. Hold a Mounting Bracket up in place to help determine the correct mounting holes to use along the body. **NOTE:** Thread an 8mm Hex Bolt into the threaded inserts to clear paint as required.

FIG 1

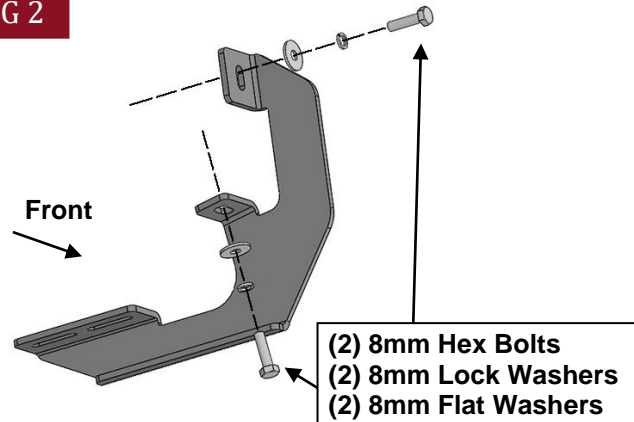


(Fig 1) Driver/Left front mounting location

STEP 2

Select (1) Mounting Bracket. Attach the Mounting Bracket to the factory threaded holes with (2) 8mm x 30mm Hex Bolts, (2) 8mm Lock Washers and (2) 8mm Flat Washers, (**Fig 2**). Do not tighten hardware.

FIG 2

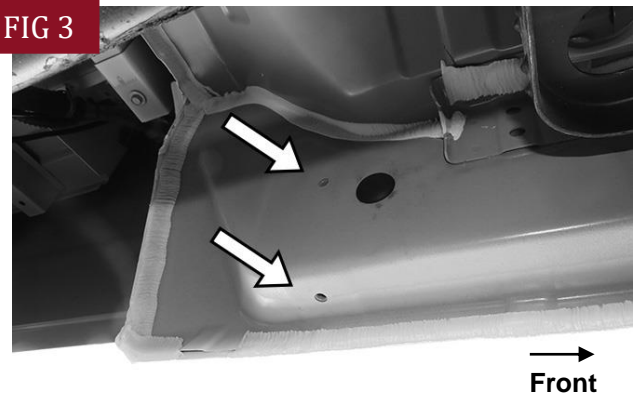


(Fig 2) Attach (1) Mounting Bracket to the Driver/Left front location

STEP 3

Move along the body to the next mounting location. Repeat **Steps 1 - 2** to attach the remaining (1) Mounting Bracket to the remaining rear location, (**Fig 3**)

FIG 3

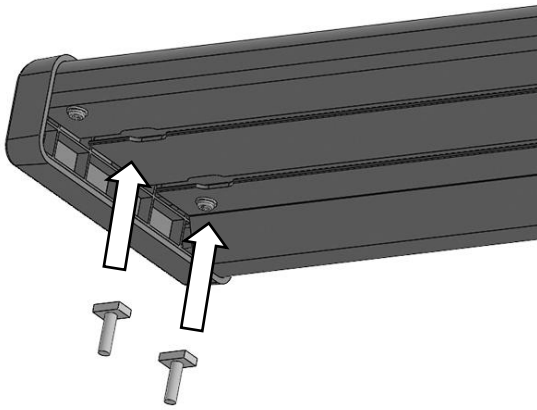


(Fig 3) Driver/Left rear mounting location

STEP 4

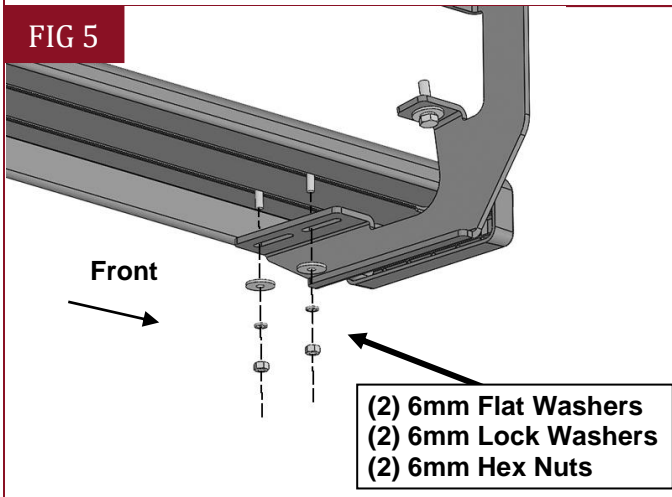
Select the (1) Running Board. Insert (4) 6mm T-Bolts into the channels in the bottom of the Running Board, (**Fig 4**), (2 T-Bolts per channel). Attach the Running Board to the Mounting Brackets with (4) 6mm Flat Washers, (4) 6mm Lock Washers and (4) 6mm Hex Nuts, (**Fig 5**). Do not tighten hardware.

FIG 4



(Fig 4) Insert (4) 6mm T-Bolts into the channels in the bottom of the Side Step, (4 T-Bolts per channel)

FIG 5



(Fig 5) Attach (1) Running Board to the Mounting Brackets

STEP 5

Level and adjust the Running Board and fully tighten all hardware.

STEP 6

Repeat **Steps 1—5** to attach the other side Running Board.

STEP 7

Do periodic inspections to the installation to make sure that all hardware is secure and tight.

Attention

To protect your investment, do not use any type of polish or wax that may contain abrasives that could damage the finish.

Mild soap may be used also to clean the Running Boards.