



# UNIVERSAL HITCH STEP

PART #: HT-U08

FITS: 2" Hitch Receiver



60-120 min





Cutting Not Required



Drilling Not Required

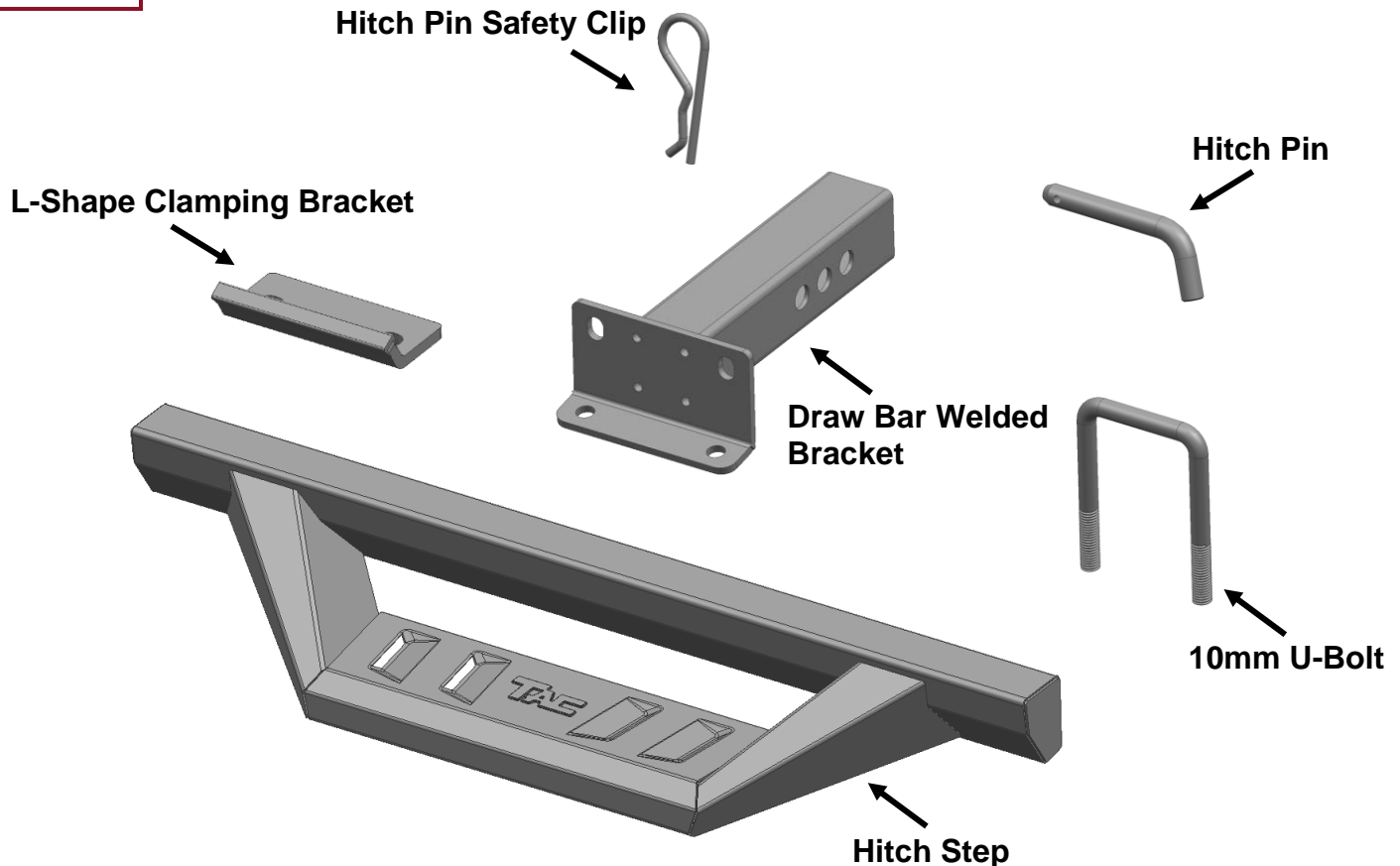
## Torque & Tools

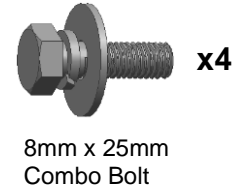
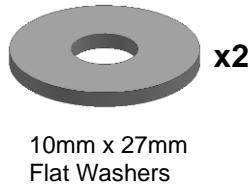
Fastener Size	Tightening Torque (ft-lbs)	Wrench Required	Allen Wrench Required	
				
<input type="checkbox"/> 6mm	<input type="checkbox"/> 7-8.5		<input type="checkbox"/> 10mm	<input type="checkbox"/> 4mm
<input checked="" type="checkbox"/> 8mm	<input checked="" type="checkbox"/> 18-20		<input checked="" type="checkbox"/> 13mm	<input type="checkbox"/> 5mm
<input checked="" type="checkbox"/> 10mm	<input checked="" type="checkbox"/> 35-40		<input checked="" type="checkbox"/> 16mm	<input type="checkbox"/> 6mm
<input type="checkbox"/> 12mm	<input type="checkbox"/> 60-70		<input type="checkbox"/> 18mm	<input type="checkbox"/> 8mm

### BEFORE INSTALLATION

REMOVE CONTENTS FROM BOX. VERIFY ALL PARTS ARE PRESENT. READ INSTRUCTIONS CAREFULLY BEFORE STARTING INSTALLATION. ASSISTANCE IS RECOMMENDED.

### Part List





## STEP 1

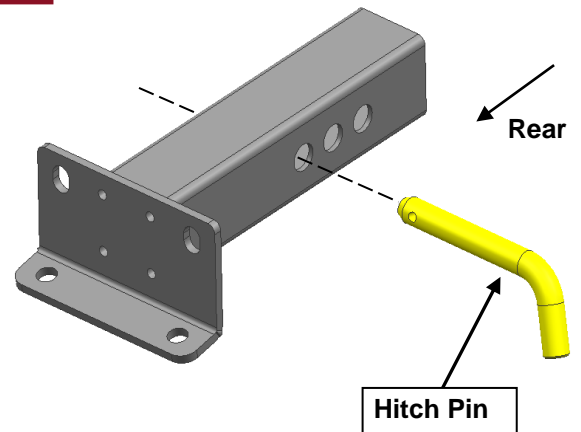
Select the Draw Bar Welded Bracket. Insert the Bracket into the receiver hitch tube and align the holes in the tube with the mounting holes on the Bracket, **(Fig 1)**. **NOTE:** There are 3 mounting holes available for pin adjustment.

FIG 1



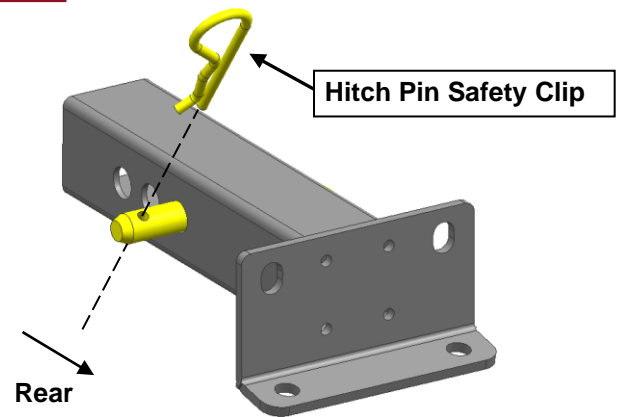
**(Fig 1)** Insert Draw Bar into hitch opening

FIG 2



**(Fig 2)** Insert the Hitch Pin through the receiver tube and Draw Bar Bracket pin holes

FIG 3



**(Fig 3)** Use the Hitch Pin Safety Clip to secure the Pin in place

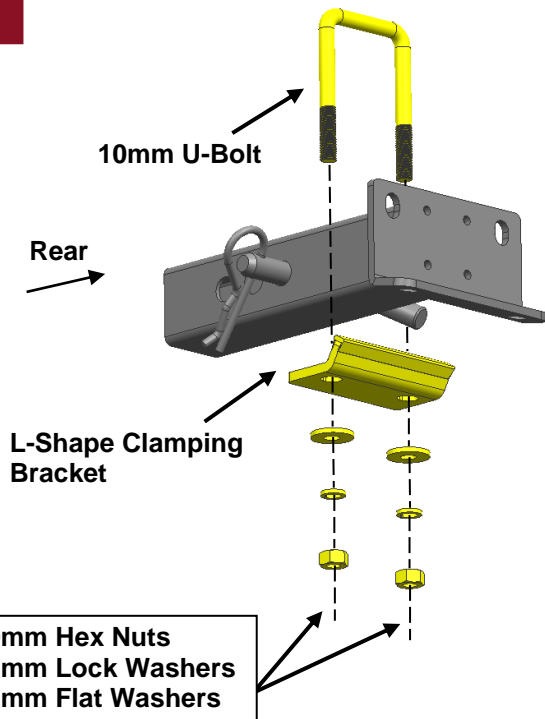
## STEP 2

Insert the Hitch Pin through the receiver tube and Draw Bar Bracket pin holes. Use the Hitch Pin Safety Clip to secure the Pin in place, **(Figs 2 - 3)**.

## STEP 3

Select the L-Shaped Clamping Bracket and the 10mm U-Bolt. Place the L Bracket under the Draw Bar and up against the end of the receiver hitch. Insert the 10mm U-Bolt over the Draw Bar and down through the L Bracket. Use (2) 10mm Hex Nuts, (2) 10mm Lock Washers and (2) 10mm Flat Washers to secure the Bracket to the Draw Bar, **(Fig 4)**. **NOTE:** The L Bracket is used to help prevent rattling. Do not tighten hardware.

FIG 4

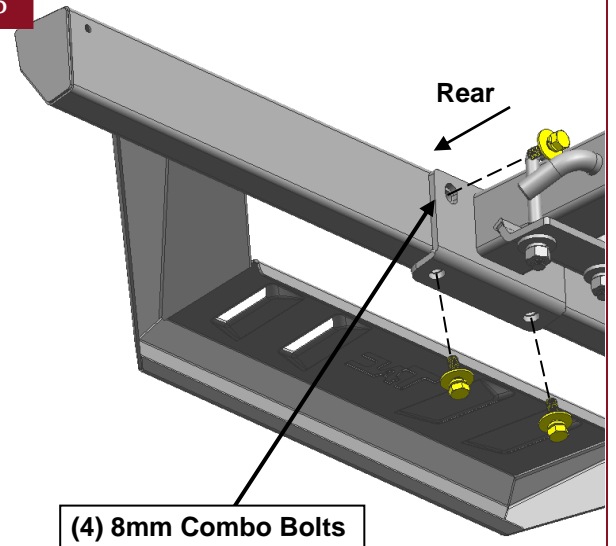


**(Fig 4)** Attach the L Bracket to the bottom of the Draw Bar and up against the hitch to prevent rattling

## STEP 4

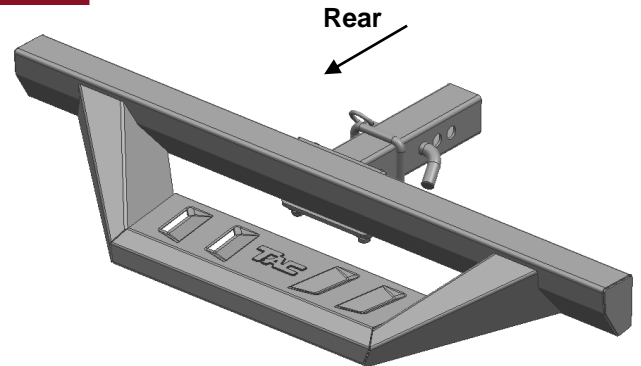
Attach the Hitch Step to the Draw Bar Welded Bracket with (4) 8mm Combo Bolts, **(Figs 5 - 6)**. Do not fully tighten hardware at this time.

FIG 5



**(Fig 5)** Attach Hitch Step to Draw Bar Welded Bracket.

FIG 6



**(Fig 6)** Complete Installation

## STEP 5

Level and adjust the Hitch Step to the Draw Bar as necessary and fully tighten all hardware.

## STEP 6

Do periodic inspections of the installation to make sure that all hardware is secure and tight.