

# APPLICATION FOR TOYS DIRECTIVE

On Behalf of

**SHENZHEN SIMTHREAD CO., LTD.**

Sample Name : **POLYESTER EMBROIDERY THREAD**

Trademark : **SIMTHREAD**

Model : **120D/2**

Prepared For : **SHENZHEN SIMTHREAD CO., LTD.**

Address : **ROOM 1210 UNIT A, NANXIAN COMMERCIAL BLDG, MINZHI, SHENZHEN, CHINA**

Manufacturer: **SHENZHEN SIMTHREAD CO., LTD.**

Address: **ROOM 1210 UNIT A, NANXIAN COMMERCIAL BLDG, MINZHI, SHENZHEN, CHINA**

Prepared By : **Shenzhen BKC Testing Co., Ltd.**

Address : **6/F, Building 3, Zhouteng Industrial Park, Nanwan Street, Longgang District, Shenzhen, Guangdong, China**

Test Date: **Nov. 03, 2020- Nov. 17, 2020**

Date of Report : **Nov. 17, 2020**

Report No.: **BKC202779NR**

**TEST REPORT**  
**EN71-3 SAFETY OF TOYS**  
**PART 1. MIGRATION OF CERTAIN ELEMENTS**

Conclusion:

Tested Sample	Standard/Regulation	Conclusion
Tested components of submitted sample	EN71 part 3: 2019	Pass



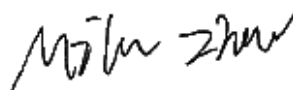
Name and address of the testing laboratory : **Shenzhen BKC Testing Co., Ltd.**

6/F, Building 3, Zhouteng Industrial Park, Nanwan Street,  
Longgang District, Shenzhen, Guangdong, China.

Date of Test:

Nov. 03, 2020- Nov. 17, 2020

Prepared by(Test Engineer):  
Mila Zhou



Reviewer(Supervisor):  
Vincent Mei



Approved(Manager):  
Corbin Wang



**Test Result****1. Migration of Certain Elements**

As per European standard on safety of toys EN71 part 3:2019, determined by inductively coupled plasma optical emission spectrometer.

Tested Items	Unit	Result	MDL	Limit
Soluble Aluminium(Al)	mg/kg	N.D.	60	70000
Soluble Antimony(Sb)	mg/kg	N.D.	1.0	560
Soluble Arsenic(As)	mg/kg	N.D.	0.5	47
Soluble Barium(Ba)	mg/kg	N.D.	60	18750
Soluble Boron(B)	mg/kg	N.D.	60	15000
Soluble Cadmium (Cd)	mg/kg	N.D.	0.4	17
Soluble Chromium (III) (Cr(III))	mg/kg	N.D.	10	460
Soluble Chromium (VI) (Cr(VI))	mg/kg	N.D.	0.005	0.053
Soluble Cobalt(Co)	mg/kg	N.D.	0.5	130
Soluble Copper(Cu)	mg/kg	N.D.	50	7700
Soluble Lead(Pb)	mg/kg	N.D.	0.5	23
Soluble Manganese(Mn)	mg/kg	N.D.	60	15000
Soluble Mercury(Hg)	mg/kg	N.D.	0.5	94
Soluble Nickel(Ni)	mg/kg	N.D.	10	930
Soluble Selenium (Se)	mg/kg	N.D.	0.1	460
Soluble Strontium(Sr)	mg/kg	N.D.	10	56000
Soluble Tin(Sn)	mg/kg	N.D.	60	180000
Soluble Organic tin	mg/kg	N.D.	0.5	12
Soluble Zinc(Zn)	mg/kg	N.D.	5	46000
Conclusion	PASS			

**Remark:**

- (1) N.D. =Not Detected (<MDL)
- (2) mg/kg=milligram per kilogram
- (3) MDL =Method Detection Limit.

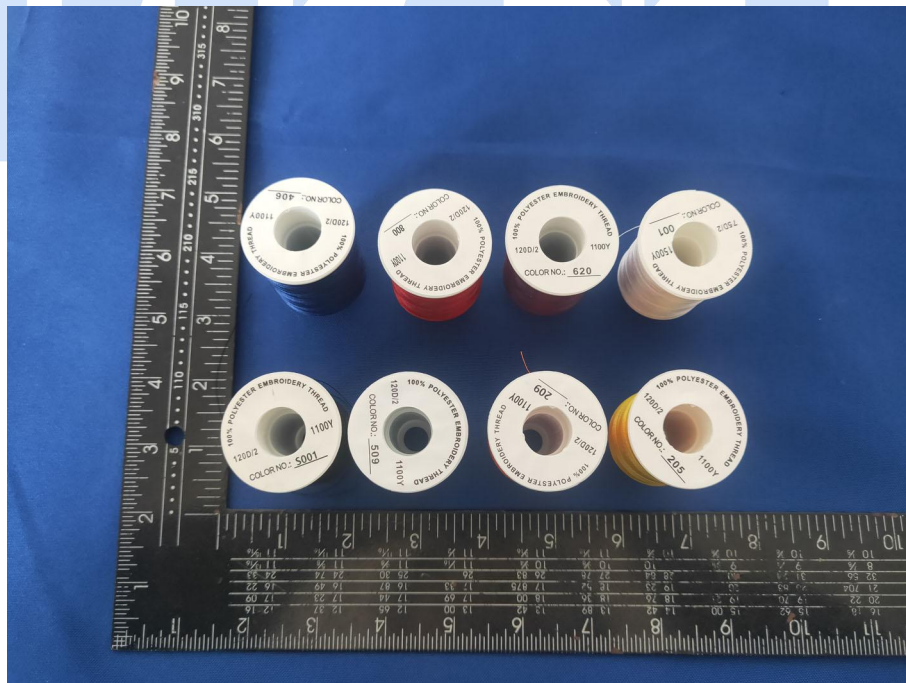
A large, light blue watermark of the BKC logo is centered on the page. It consists of the letters 'BKC' in a bold, sans-serif font, with a circular emblem of two concentric rings behind them. The watermark is semi-transparent and serves as a background for the main text.

**ANNEX A:**  
**Photo-documentation**

Photo 1



Photo 2



\*\*\*\*\* END OF REPORT \*\*\*\*\*