

■ IRON MAN MARK 1 1/4 SCALE STATUE ASSEMBLY GUIDE



■ Final Display:

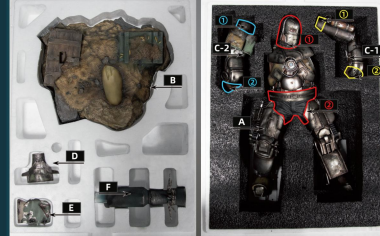


■ List of Parts:



■ What is in the Box:

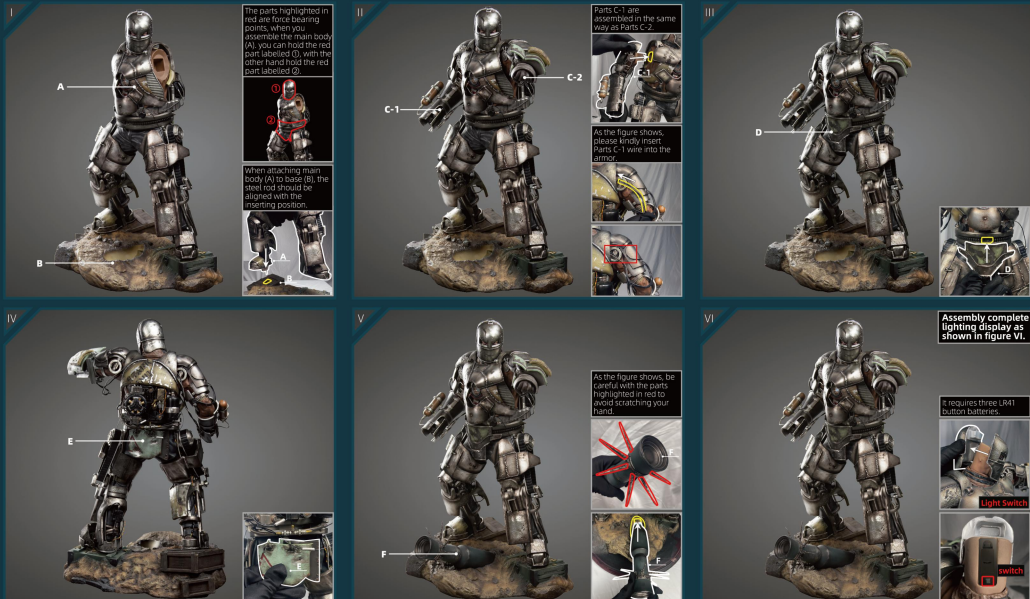
Precautions for parts A, C-1 and C-2
The parts highlighted in red, blue and yellow are force bearing points. The parts not highlighted in red, blue and yellow are not force bearing points. When moving the body of and assembling the statue, only handle the parts highlighted in red, blue and yellow to avoid damage to the non-weight bearing parts. How to take parts A, C-1 and C-2 out of the styrofoam and assemble them: One hand should be placed in the parts labelled ①, the other hand in the parts labelled ②, then carefully take out of the box.



■ 360 Degrees Display:



■ Assembly Steps:



■ 钢铁侠MARK1 1/4全身像组装说明书



■ 整体展示:

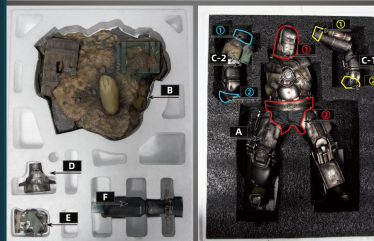


■ 配件一览:

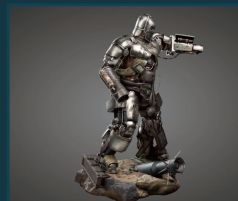
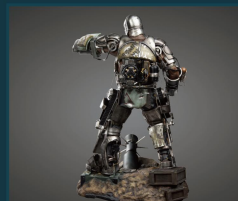
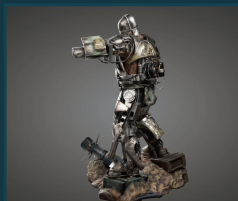
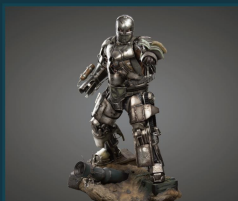


■ 配件位置:

关于A、C-1和C-2配件注意事项:
框内位置为受力点, 非框内位置为非受力点, 取出配件及进行安装时, 请勿触碰非受力点, 避免造成损坏;
将A、C-1和C-2配件从保丽龙取出及进行安装时, 均需一手放在位置①, 另一只手放在位置②, 小心取出。



■ 全方位展示:



■ 组装步骤:

