



Model No.
T6/T12

Universal Manuals FOR ANDROID

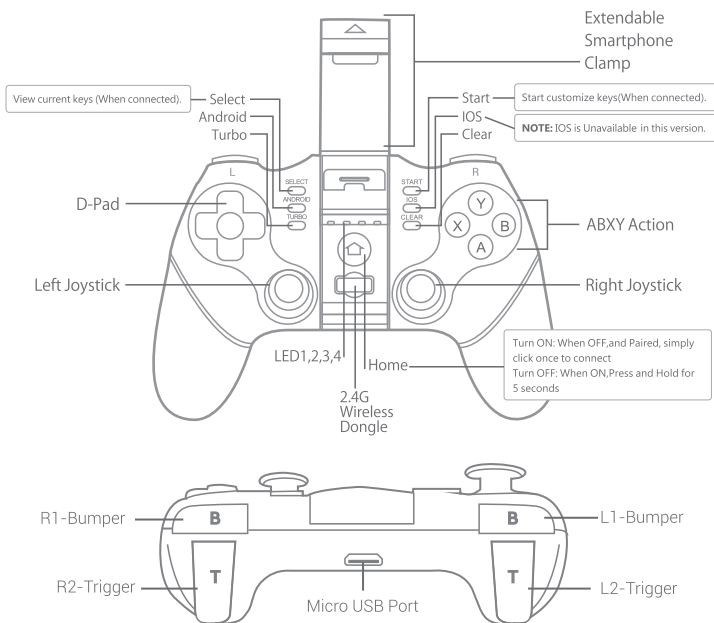


Product Description

Are you ready for your next gaming session? The TERIOS makes your experience so much better with the innovative gamepad for smartphones! Easy to use, responsive, and precise, this smartphone joystick is a great way to become the champion of your favorite video games of the decade. The gaming console is compatible with most Android devices and can be used to play practically any game with gamepad.

NOTE: This product has been designed to enhance your video gaming experience. Please keep this instruction manual for future reference.

Overview

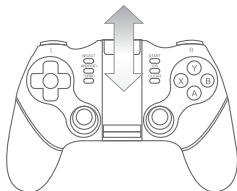


How to Mount Your Smartphone

1

Flip the Clamp

It's simple just flip the clamp on the outside to open it.



2

Extend the Clamp

The clip can expand and contract with respect your device size.



3

Insert your device

Put your device and align it left or right and you are ready to go.



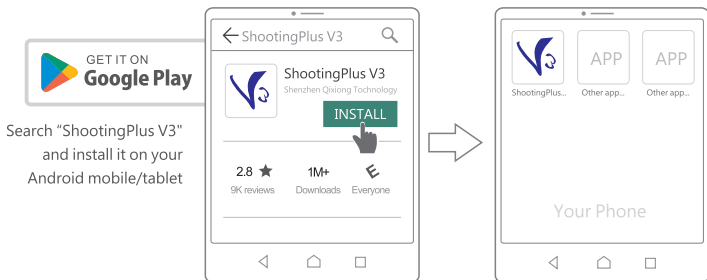
Product Parameters

Voltage: DC 3.7V	Charge Cable Type: Micro USB
Bluetooth Transmission Distance: <8m	Charging Time: 2-3 hours
Working Current: <15mA	Usage Time: 12-15 hours
Vibration Current: 90-120mA	Connection: Bluetooth 4.0
Sleep Current: 0 uA	Standby Time: 30 Days
Charging Current: >350mA	Dimensions: 163 x 105 x 65mm
Battery Capacity: Li-ion Polymer 400mAh	Weight: 195g
Power Indicator: LED Indicators	
Compatibility: Android Smartphone(Tablet)/PS3/PC	

How to Play



01. Download the ShootingPlus V3 APP on Google Play



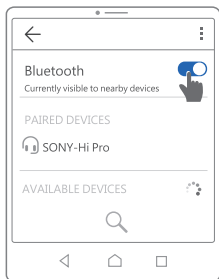
02. Connect Your Android Mobile/Tablet

Step 1

Open the Bluetooth on Android Device, click searching.

Step 2

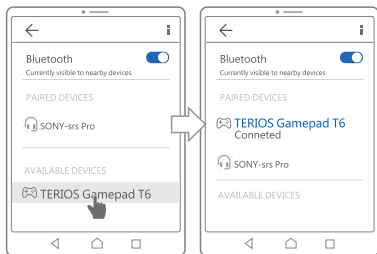
Press and hold **ANDROID** +  button simultaneously until LED1 flashes.



How to Play

Step 3

Find and select '**TERIOS Gampad T6**' for Bluetooth pairing.



Step 4

The **LED1** light up after connected "TERIOS Gampad T6" Bluetooth.



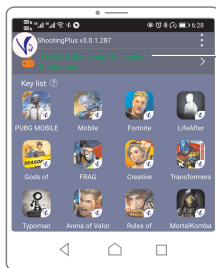
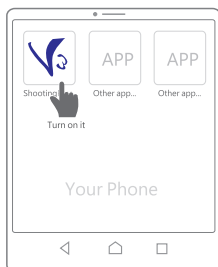
NOTE: | The controller only works with "TERIOS Gampad T6".
If it's not connected, please re-pair it again.

03. How to Map Touchpoint on Your Android Device to Buttons on the Gamepad?

1. The HOME+UP/HOME+DOWN/HOME+LEFT/HOME+RIGHT are four basic preset modes.
2. Select any of the modes to get basic preset, and move on to make key customization to suit your habits.

Step 1

Turn on the ShootingPlus V3 on the phone, there is an icon showing as V3.

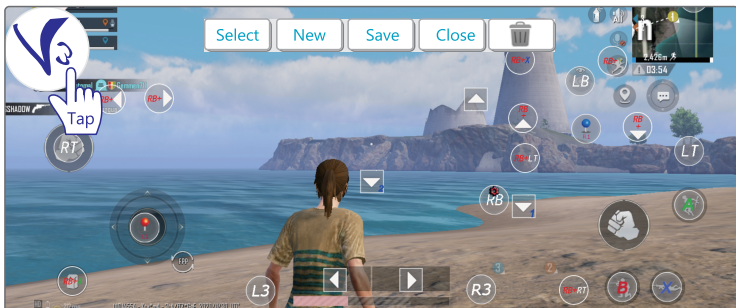


Make sure TERIOS Gampad is connected status by Direct Mode.

How to Play

Step 2

Enter the game; Tap V3 floating icon to begin key customization.
For example the game "PUBG":



① Select "Switch to preset Home+Up"

Get one of the default preset mode for "PUBG"

Select

Obtain the sharing presets

Switch to preset Home+Up

Switch to preset Home+Down

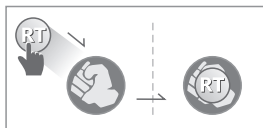
Switch to preset Home+Left

Switch to preset Home+Right



② Customize Keys to the Buttons on GamePad

Drag any keys to the positions to suit your habits



③ Save your Customized Setting

You're set to play "PUBG" with the gamepad!

Save

Save

Share

- ☒ Save the preset scheme to the device
- ☐ Save to APP at the same time

Cancel


OK




NOTE:

Home+UP is the perfect preset mode to 'PUBG', however the default key positions may shift due to different revolutions from different devices, you should adjust the keys positions rightly to ensure the full functions on your gamepad.

How to Play









Select	Select any of the four preset modes for the game.(Test & choose the best one to suit your user habits)
New	Customize a NEW set of keys fully on your own without using any of the default & preset modes.
Save	Save any keys that you've set to the game.
Close	Turn off the key setting.
	Drag any keys here to delete it.

Re-Connect

The TERIOS Gamepad will automatically turn off if there is no operation over 5 minutes, press the HOME button () until the LED1 flashes, and it will re-connect to the ShootingPlus V3.

2.4G Wireless Connection to PS3/Windows PC

1. Plug 2.4G dongle into the USB port of your PS3, Window PC
2. Press and hold Home+Select button until the LED flashes.
3. The LED indicator stays on once successfully connected.

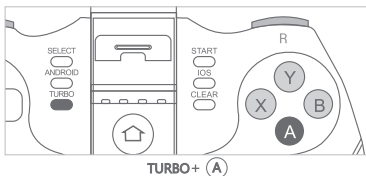
Mode \ Platform	Android System	Playstation 3	Windows PC
Working Mode	Bluetooth 4.0	2.4G Wireless 	2.4G Wireless 
Pairing Mode	Android + 	L1 + 	L1 + 
Indicator	LED1 	LED1+LED2 	LED1+LED2 

How to use Turbo?

Turbo is used more in shooting games. Your fingers could easily get tired if you continuously press the same button (shooting button). With TURBO, you can continuously shoot by holding the shooting button.

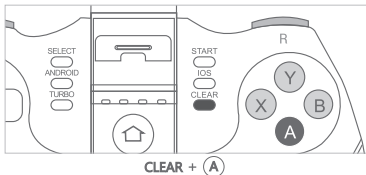
Enabling of Turbo Function

First, press the button that needs the turbo function (for example the "A" button) and simultaneously press the **Turbo** button. At this moment, the A button will be enabled with the turbo function.



Disabling of Turbo Function

First, press the button that has been setup with the turbo function (for example the "A" button) and then, press the **Clear** button. At this moment, the A button will be disabled with Turbo function.



- The turbo function is available for the fire buttons (A,B,X,Y,L1,L2,R1,R2)
- If you forget which buttons you have set to Turbo mode, deactivate them all and reassign.
- When restarting game play, you will need to set the Turbo function again.

How to Reset

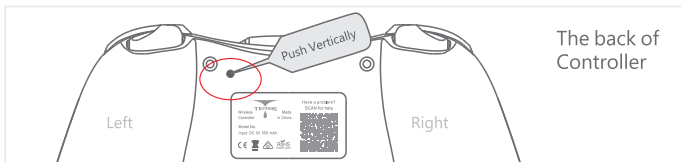
If your controller won't pair, won't respond, or is displaying a flashing light, please follow the instructions on how to reset the controller.

Step 1 Turn off the TERIOS controller.

Step 2 Locate the small reset button on the back of the controller near the shoulder button.

Step 3 Use a small, unfolded paper-clip or small tools to push the button (the button is inside a tiny hole). Hold the button down for a few seconds and release.

Step 4 This will prompt the controller to resync, you'll have to re-connect your controller to the device.



Charging/Sleeping/Waking/Shutting down

Charging	Power is low	When the power is low, the four LEDs indicators flash rapidly
	Being charged	When it is being charged, the four LEDs indicators slowly
	Fully charged	When it is fully charged, the four LEDs indicators stay on
Sleeping	The gamepad automatically shuts down when there is no operation within 5 minutes.	
Waking	Press the 'HOME' button to wake it up, it will re-connect to the device automatically.	
Shutting down	Press and hold down the 'Home' button for 3 seconds to turn it off, the LED indicators will be off.	

Package Includes



Controller x1



2.4G Wireless Dongle



Micro USB Cable x1



User Instruction x1



Warranty Card x1

Upgrade

We promise to provide sustainable upgrade service for our products.

If your purchased product can not pair the newest version of the consoles, Please visit our 'Help Center' or contact us directly, we'll walk you through how to upgrade it.

Get help: www.teriosgaming.com/pages/support

Precautions

- ⊘ DO NOT use this product near fire sources;
- ⊘ DO NOT place the product in a humid or dusty environment;
- ⊘ DO NOT expose to direct sunlight or high temperature;
- ⊘ DO NOT use chemicals such as gasoline or thinner;
- ⊘ DO NOT hit the product or make it fall due to strong impact;
- ⊘ DO NOT bend or pull the cable parts strongly;
- ⊘ DO NOT disassemble, repair or modify.

- ▲ 1. This product is compatible with Android 6.0 or later version device.
- ▲ 2. This product is not compatible with iOS and MediaTek & Helios devices.
- ▲ 3. TERIOS Gamepad T6 does not support vibration functionality.

- * The image on the packaging may differ from the actual product.
 - * The manufacturer reserves the right to change the product design or specifications without notice.
 - * Playstation 3 is registered trademark of Sony Interactive Entertainment LLC. All rights reserved.
- All other trademarks are property of their respective owners.

Having problem? SCAN for Help!



Visit us: www.teriosgaming.com



Like us on Facebook: [@teriosofficial](#)



support@teriosgaming.com