

HuaKe

SHENZHEN HUAKE LIGHT ELECTRONICS CO., LTD.



Tel.: +86-755 8306 6884

Email: info@ledlightsworld.com

Website: <http://www.ledlightsworld.com>

Mob./Wechat/Whatsapp: +86 133 0296 0992

Add.: 5F/1#, ChaXi SanWei Industrial Zone, GuShu, XiXiang, BaoAn,
ShenZhen, 518126,GuangDong, China.

LED DOWNLIGHTS



DIRECTIONAL COB LED DOWNLIGHT-B SERIES

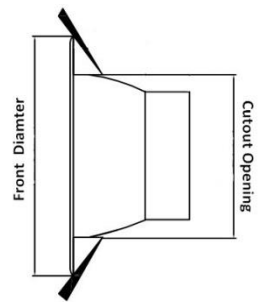
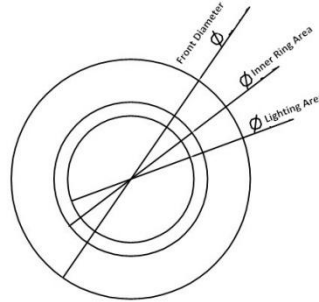
FEATURES

- * Input 90-130V / 200-240V AC
- * Powered by high quality COB LED
- * CCT: 2700K / 3000K / 4000K / 6000K
- * 80LM/W
- * 90+ CRI
- * Beam Angle: 60 °
- * Projecting direction adjustable 0-25 °
- * TRIAC dimming
- * 2 years warranty



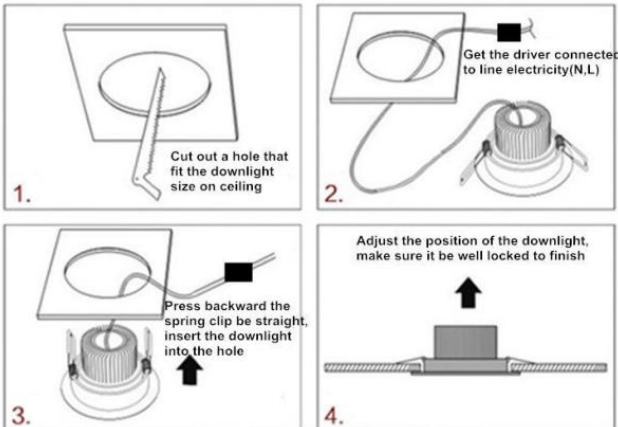
APPLICATIONS

- * Shopping mall
- * Fashion store
- * Showroom
- * Museum
- * Art gallery
- * Home & Kitchen



GENERAL

Installation Guide



	Front Dia.	Cutout Dia.	Height	Lumen Output
3W	68	51	51	250
5W	90	65	63	390
9W	115	89	79	700
16W	145	110	97	1250

Unit:mm (1inch = 25mm)



LED DOWNLIGHT-W SERIES

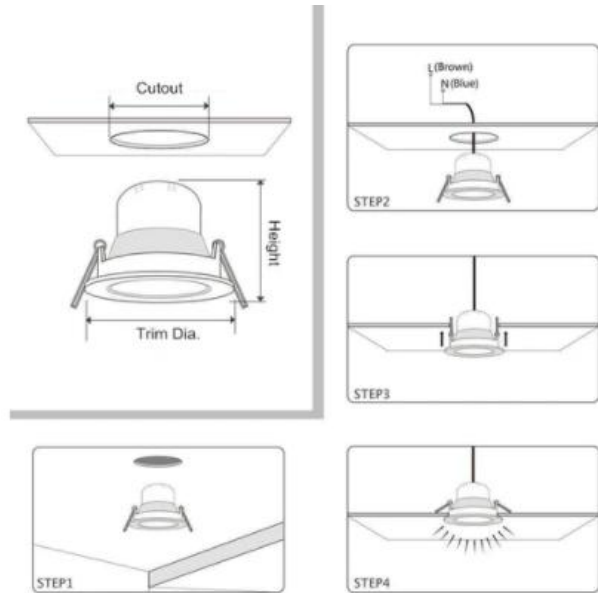
FEATURES

- * 90-240V / 220V/120V AC
- * Powered by high quality COB LED
- * CCT: 3000K ~6500K
- * White finish color
- * 80+ CRI
- * Material: Aluminum+PC
- * 90V-240VNon-Dimmable/ 220Vdimming /120Vdimming



APPLICATIONS

- * Shopping mall
- * Fashion store
- * Showroom
- * Museum
- * Art gallery
- * Home & Kitchen



Flame Retardant
PC
Keeps fire away



The connector can connect the power cord directly

Power	Lumen	Cutout Size	Dia.* H
3W	220-240	2.36in(60mm)	70*50mm
5W	350-400	2.95in(75mm)	85*50mm
9W	750-800	4.3in(110mm)	120*50mm
12W	850-1000	4.72in(120mm)	139*50mm
15W	1100-1200	5.9in(150mm)	160*50mm
18W	1500-1650	6.29in(160mm)	180*50mm
24W	1800-2200	8.29in(210mm)	230*50mm

LED DOWNLIGHT-C SERIES

FEATURES

- * 90-240V / 220V/120V AC
- * Anti-glare and Antifog
- * TRIAC Dimmable
- * Deep Concave Recessed
- * White finish color
- * 80+ CRI
- * Material: Aluminum+PC
- * 90V-240V Non-Dimmable / 220V dimming / 120V dimming



APPLICATIONS

- * Shopping mall
- * Fashion store
- * Showroom
- * Museum
- * Art gallery
- * Home & Kitchen

Power	Lumen	Cutout Size	Dia.* H
3W	220-240	2.95in(75mm)	85*50mm
5W	350-400	3.35in(85mm)	95*50mm
7W	500-560	3.54in(90mm)	103*55mm
9W	750-800	4.33in(110mm)	125*55mm



LED DOWNLIGHT-X SERIES

FEATURES

- * 90-240V / 220V/120V AC
- * Powered by high quality COB LED
- * CCT: 3000K ~6500K
- * White finish color
- * 80+ CRI
- * Material: Aluminum+PC
- * 90V-240VNon-Dimmable/ 220Vdimming /120Vdimming

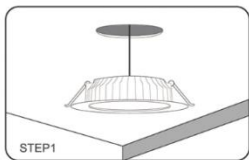


APPLICATIONS

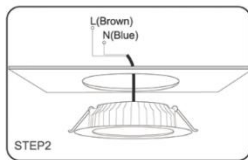
- * Shopping mall
- * Fashion store
- * Showroom
- * Museum
- * Art gallery
- * Home & Kitchen



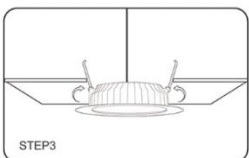
How to install it:



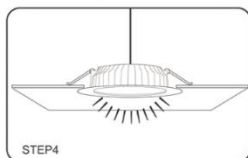
STEP1
Cut a hole that fits the size of the light.



STEP2
Disconnect the power, then connect the wire with the dimmer or switch you have. Do the job of insulation protection for the wire.



STEP3
Install the light.



STEP4
Power on and enjoy.

Power	Lumen	Cutout Size	Dia.* H
5W	350-400	2.75in(70mm)	100*40mm
7W	650-700	3.5in(90mm)	116*60mm
12W	750-800	4.5in(114mm)	145*43mm
15W	1500-1800	5.5in(140mm)	185*48mm
24W	2700-3000	7.5in(190mm)	230*53mm

LED DOWNLIGHT-E SERIES

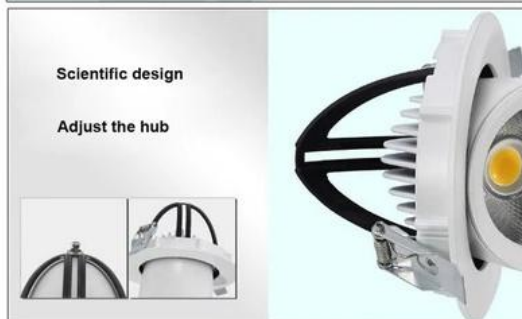
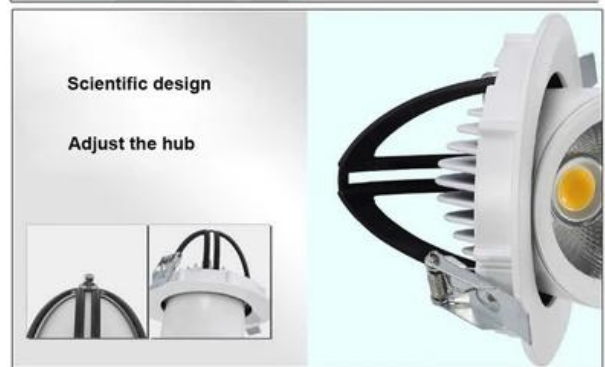
FEATURES

- * 90-240V / 220V/120V AC
- * Beam Angle: 24°
- * White finish color
- * 80+ CRI
- * Material: Aluminum+PC
- * 90V-240VNon-Dimmable/ 220Vdimming /120Vdimming



APPLICATIONS

- * Shopping mall
- * Fashion store
- * Showroom
- * Museum
- * Art gallery
- * Home & Kitchen



Power	Lumen	Cutout Size
10W	750-800	75mm
18W	1350-1440	100mm
24W	1800-1920	120mm

FEATURES

Waterproof IP65 Non-dimmable CRI>80 Round Shape Recessed LED Downlight Fixture Vapor Proof Fit for Shower, Suana and Outdoor Lighting

- * Waterproof IP65
- * Rated for outdoor use, fit for shower, sauna applications
- * Input 85-265V AC
- * CCT: 2700K / 3000K / 4000K / 5500K
- * 80 LM/W
- * 80+ CRI
- * Non-dimming
- * 2 years warranty
- * Recessed into ceiling opening directly



MODELS

Photo	Wattage	Lumen Output	Trim Diameter	Cutout	Height	Input Voltage	Dimming	RA	CCT
	5W	80LM/Watt	90mm	75-80mm	67mm	85-265V AC	Non-dimmable	CRI80	2700K-6500K
	7W	80LM/Watt	90mm	75-80mm	67mm	85-265V AC	Non-dimmable	CRI80	2700K-6500K
	9W	80LM/Watt	90mm	75-80mm	67mm	85-265V AC	Non-dimmable	CRI80	2700K-6500K
	12W	80LM/Watt	108mm	95-100mm	72mm	85-265V AC	Non-dimmable	CRI80	2700K-6500K
	15W	80LM/Watt	108mm	95-100mm	72mm	85-265V AC	Non-dimmable	CRI80	2700K-6500K
	15W	80LM/Watt	140mm	95-130mm	72mm	85-265V AC	Non-dimmable	CRI80	2700K-6500K
	18W	80LM/Watt	190mm	160-180mm	70mm	85-265V AC	Non-dimmable	CRI80	2700K-6500K
	24W	80LM/Watt	190mm	160-180mm	70mm	85-265V AC	Non-dimmable	CRI80	2700K-6500K



DIMENSION

<p>3.54inch</p>  <p>9cm</p> <p>5W/7W/9W</p>	<p>4.25inch</p>  <p>10.8cm</p> <p>12W/15W</p>	<p>5.51inch</p>  <p>14cm</p> <p>15W</p>	<p>7.48inch</p>  <p>19cm</p> <p>18W/24W</p>
---	--	--	--

DETAILS



" N " for neutral wire , " L " for live wire.
it no need junction box. Installation is very simple.

Waterproof Connector



Waterproof End Cap



Waterproof Power Supply



Waterproof Silicone Ring



IP65 Waterproof

Use high-quality Aluminium case, elaborate processing, good heat radiation effect, waterproof grade IP65. High-density foam solid silicon rubber sealing ring, high level of dustproof.



LED CEILING LIGHT



Even Illumination

No glares or black spots



0.94 Inch SLIM SURFACE CEILING LIGHT

FEATURES

- * 110V/220VAC
- * CRI>Ra80
- * Non-dimming
- * 100LM/W
- * ABS+PS



PHILIPS



APPLICATIONS

- * Shopping mall
- * Fashion store
- * Showroom
- * Museum
- * Art gallery
- Home & Kitchen



GENERAL

Model	Size	Power	Lumen	CCT	LED Brand	IP Rate
HK180	180*24mm	12W	1400-1600	2800K/5000K/2800K+5000K	Philips/Epistar	IP40/44
HK230	230*24mm	18W	2100-2300	2800K/5000K/2800K+5000K	Philips/Epistar	IP40/44
HK300	300*24mm	24W	3050-3200	2800K/5000K/2800K+5000K	Philips/Epistar	IP40/44
HK480	480*24mm	36W	4300-4500	2800K/5000K/2800K+5000K	Philips/Epistar	IP40/44
HK600	600*24mm	45W	5400-5600	2800K/5000K/2800K+5000K	Philips/Epistar	IP40/44

SURFACE CEILING LIGHT-CCT



FEATURES

- * 110V/ 220VAC
- * CRI>Ra80
- * Supports to preset CCT by button and dimming brightness by wall switch.
- * 100LM/W
- * ABS+PS

APPLICATIONS

- * Shopping mall
- * Fashion store
- * Showroom
- * Museum/ Art gallery
- Home & Kitchen



GENERAL

Model	Size	Power	Lumen	CCT	LED Brand	IP Rate
HK180C	180*24mm	12W	1400-1600	2800K+4000K+ 6500K	Philips/Epistar	Ip40/44
HK230C	230*24mm	18W	2100-2300	2800K+4000K+ 6500K	Philips/Epistar	Ip40/44
HK300C	300*24mm	24W	3050-3200	2800K+4000K+ 6500K	Philips/Epistar	Ip40/44
HK480C	480*24mm	36W	4300-4500	2800K+4000K+ 6500K	Philips/Epistar	Ip40/44
HK600C	600*24mm	45W	5400-5600	2800K+4000K+ 6500K	Philips/Epistar	Ip40/44

SURFACE CEILING LIGHT-CCT-RF

FEATURES

- * 110V/ 220VAC
- * CRI>Ra80
- * CCT Adjustable and Dimmable via Remote
- * 100LM/W
- * ABS+PS



APPLICATIONS

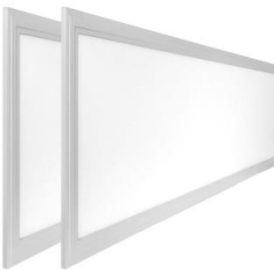
- * Shopping mall
- * Fashion store
- * Showroom
- * Museum
- * Art gallery
- Home & Kitchen



GENERAL

Model	Size	Power	Lumen	CCT	LED Brand	IP Rate
HK300RF	300*24mm	24W	3050-3200	2800K+4000K+ 6500K	Philips/Epistar	Ip40/44
HK480RF	480*24mm	36W	4300-4500	2800K+4000K+ 6500K	Philips/Epistar	Ip40/44
HK600RF	600*24mm	45W	5400-5600	2800K+4000K+ 6500K	Philips/Epistar	Ip40/44

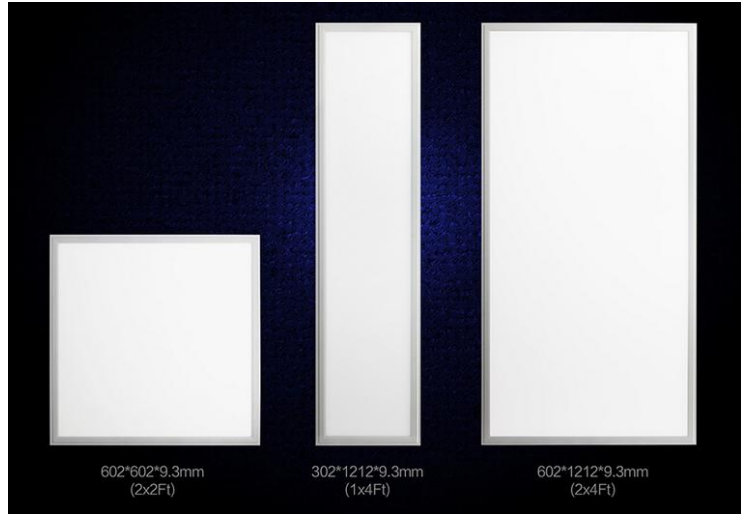
LED PANEL LIGHTS



Suspension/Recessed LED PANEL-Sqaure Shape

FEATURES

- * 9.3mm thick
- * Input 100-277 V AC
- * Powered by high quality SMD LED
- * CCT: 3000K / 4000K /5000K/6000K
- * 100LM/W
- * 80+ CRI
- * Beam Angle: 120 °
- * Non-dimming/0-10V dimming
- * 3 years warranty
- * Pendant Hardware included

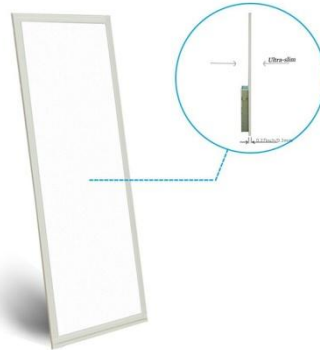


APPLICATIONS

- * Shopping mall
- * Fashion store
- * Showroom
- * Museum
- * Art gallery
- * Home & Kitchen
- * Warehouse

0.37inch (9.3mm) LOW PROFILE

The panel body is only 0.37inch (9.3mm) in thick, less than two iPhone55 thickness.



GENERAL

Size (mm)	Wattage (Watt)	Input Voltage (V AC)	Lumen Output (LM/Watt)
300x600	35W	100-277V	100LM/W
600x600	50W	100-277V	100LM/W
300x1200	50W	100-277V	100LM/W
600x120	60W	100-277V	100LM/W

Unit:mm (1inch = 25mm)

Application Scenario		
Warm White	Natural White	Cool White
3000K	4000K	5000K
Use in the home	Used in the shopping mall	Use in the office



No Radiation



High Light Effect



High Ra



Low Power Consumption



Strong Radiating



Low Light decay



No flicker

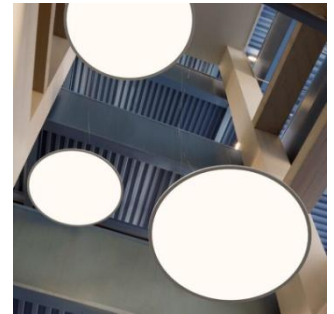


long lifetime

Suspension LED PANEL-Round Shape

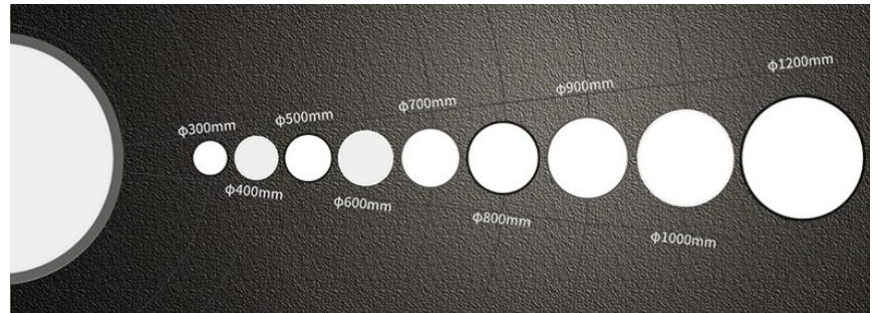
FEATURES

- * 9-13mm thick
- * White Trim
- * Input 100-277 V AC
- * Powered by high quality SMD LED
- * CCT: 3000K / 4000K /6000K
- * 100LM/W
- * 80+ CRI
- * Beam Angle: 120 °
- * Non-dimmable/
0-10V dimming
- * 3 years warranty
- * Pendant Hardware included



APPLICATIONS

- * Shopping mall
- * Fashion store
- * Showroom
- * Museum
- * Art gallery
- * Home & Kitchen
- * Warehouse



GENERAL

Diameter (mm)	Wattage (Watt)	Input Voltage (V AC)	Lumen Output (LM)	CRI
310	14W	100-240V	1400LM	80+
406	24W/36W	100-277V	2400LM/3600LM	80+
507	36W/48W	100-277V	3600LM/4800LM	80+
608	36W/48W/60W	100-277V	3600LM/4800LM/6000LM	80+
704	48W/60W	100-277V	4800LM/6000LM	80+
800	60W/72W	100-277V	6000LM/7200LM	80+
900	72W/90W	100-277V	7200LM/9000LM	80+
1000	90W/110W	100-277V	9000LM/11000LM	80+
1200	110W/120W	100-277V	11000LM/12000LM	80+

Unit:mm (1inch = 25mm)



No Radiation



High Light Effect



High Ra



Low Power Consumption



Strong Radiating



Low Light decay



No flicker



long lifetime

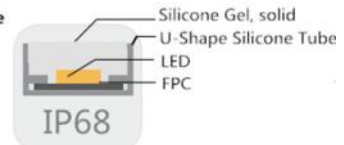
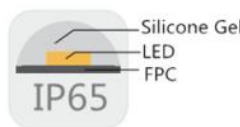
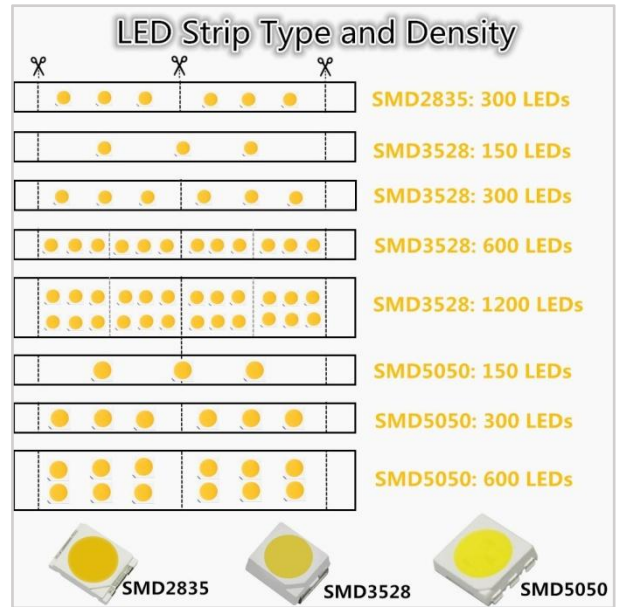
LED FLEXIBLE STRIP LIGHTS



LED FLEXIBLE STRIPS- TOP EMITTING SINGLE COLOR

FEATURES

- * 12V DC
- * Max Length: 500cm (16.4ft)
- * CCT: 2700K/3000K/4000K/6000K
- * Other Colors:
Red/Green/Blue/Yellow
/Pink/Purple/Orange/Amber
/IR 850nm/IR 940nm
/UV 365nm-395nm
- * 90+/80+ CRI (selectable)
- * Beam Angle: 120°
- * 2 conducts
- * IP grade: Non-waterproof, IP65, IP67, IP68
- * PCB background: White, Yellow, Black
- * Dim with compatible controller
- * CE, ROHS approved
- * Solderless connectors available for 8mm & 10mm Strips



GENERAL

Model	Strip Width	FPCB Color	Color Options	IP Grade	Cut Section	Lumen Output	Rated Power
SMD3528-150	8mm	W/Y	ALL	NW/IP65/67/68	3LED/10cm	50lm/ft	0.7W/ft
SMD3528-300	8mm	W/Y/B	ALL	NW/IP65/67/68	3LED/5cm	95lm/ft	1.46W/ft
SMD3528-600	8mm	W/Y/B	ALL	NW/IP65/67/68	3LED/2.5cm	200lm/ft	2.9W/ft
SMD3528-1200	15mm	W	ALL	NW/IP65/67	6LED/2.5cm	390lm/ft	4.3W/ft
SMD5050-150	10mm	W/Y/B	ALL	NW/IP65/67/68	3LED/10cm	175lm/ft	2.0W/ft
SMD5050-300	10mm	W/Y/B	ALL	NW/IP65/67/68	3LED/5cm	350lm/ft	4.3W/ft
SMD5050-600	15mm	W	ALL	NW/IP65/67/	6LED/5cm	690lm/ft	8.7W/ft
SMD2835-300	8mm	W	ALL	NW/IP65/67/68	3LED/5cm	350lm/ft	3.7W/ft
SMD2835-600	8mm	W	ALL	NW/IP65/67/68	3LED/2.5cm	690lm/ft	5.5W/ft

Unit:mm (1inch = 25mm =2.5cm) **Note: The Lumen Output here is for White color.**¹⁸

LED FLEXIBLE STRIPS- TOP EMITTING RGB COLOR

FEATURES

- * 12V DC
- * Max Length: 500cm (16.4ft)
- * Color: RGB
- * 4 Conducts
- * Beam Angle: 120°
- * IP grade: Non-waterproof, IP65, IP67, IP68
- * PCB background: White, Yellow, Black
- * RGB Color changing with compatible controller
- * CE, ROHS approved
- * Solderless connector available for 10mm strip



APPLICATIONS

- Decroative Lighting
- Stage Lighting
- Landscape Lighting



GENERAL

Model	Strip Width	FPCB Color	Color	IP Grade	Cut Section	Rated Power
SMD5050-150	10mm	W/Y/B	RGB	NW/IP65/67/68	3LED/10cm	2.0W/ft
SMD5050-300	10mm	W/Y/B	RGB	NW/IP65/67/68	3LED/5cm	4.3W/ft
SMD5050-600	15mm	W	RGB	NW/IP65/67	6LED/5cm	8.7W/ft

Unit:mm (1inch = 25mm= 2.5cm)



LED FLEXIBLE STRIPS- TOP EMITTING RGBW COLOR

FEATURES

- * 12V DC
- * Max Length: 500cm (16.4ft)
- * Color: RGBW/RGBWW/RGBNW
- * LED Source: SMD5050 4in1 RGBW LED
- * Beam Angle: 120°
- * IP grade: Non-waterproof, IP65, IP67, IP68
- * PCB background: White
- * RGB Color changing with compatible controller
- * Separate white color available
- * White color option: 3000K, 4000K or 6000K
- * 5 conducts LED strip
- * CE, ROHS approved
- * Solderless quick connector available



APPLICATIONS

- Decroative Lighting
- Stage Lighting
- Landscape Lighting



GENERAL

Model	Strip Width	FPCB Color	IP Grade	Cut Section	Rated Power
SMD5050-150	12mm	White	NW/IP65/67/68	3LED/10cm	2.2W/ft
SMD5050-300	12mm	White	NW/IP65/67/68	3LED/5cm	5.5W/ft

Unit:mm (1inch = 25mm = 2.5cm)

IP GRADE



LED FLEXIBLE STRIPS- SIDE EMITTING

FEATURES

- * 12V DC
- * Max Length: 500cm (16.4ft)
- * CCT: 2700K/3000K/4000K/6000K
- * Other Colors:
Red/Green/Blue/Yellow
/Pink/Purple/Orange/RGB
- * 80+ CRI (selectable)
- * Beam Angle: 120°
- * 2 Conducts
- * IP grade: Non-waterproof, IP65, IP67
- * PCB background: White, Yellow
- * Dim with compatible controller
- * Solderless quick connector available
- * CE, ROHS approved



GENERAL

Model	Strip Width	FPCB Color	Light Color	IP Grade	Cut Section	Rated Power
SMD335-300	8mm	W/Y	W/R/G/B/Y/P/O	NW/IP65/67	3LED/5cm	1.46W/ft
SMD335-600	8mm	W/Y	W/R/G/B/Y/P/O	NW/IP65/67	3LED/2.5cm	2.9W/ft
SMD020-300	8mm	W	RGB	NW/IP65/67	3LED/5cm	1.46W/ft

Unit:mm (1inch = 25mm = 2.5cm)

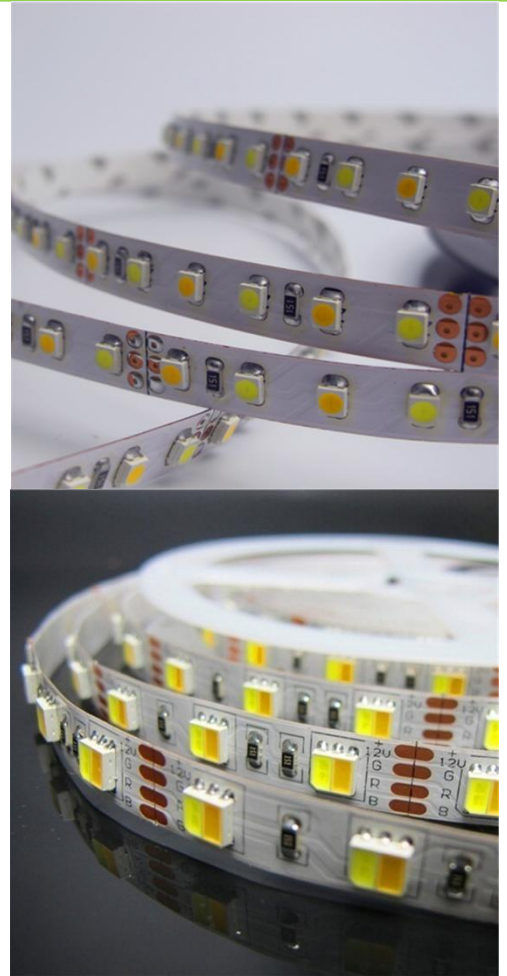
IP GRADE



LED FLEXIBLE STRIPS- DUAL WHITE CCT Color Changeable

FEATURES

- * 12V DC /24V DC
- * Max Length: 500cm (16.4ft)
- * CCT: 3000K-6000K CCT changeable
- * 80+ CRI
- * Beam Angle: 120°
- * 3 Conducts
- * IP grade: Non-waterproof, IP65, IP67, IP68
- * PCB background: White
- * Dim&CCT changeable with compatible controller
- * Solderless quick connector available
- * CE, ROHS approved
- * LED Type: Dual White 2 in 1 LED; Single White LED



GENERAL

Model	Strip Width	FPCB Color	Light Color	IP Grade	Cut Section	Rated Power
SMD2835-300	8mm	W	3000K-6000K	NW/IP65/IP67/IP68	3LED/5cm	3.7W/ft
SMD2835-600	8mm	W	3000K-6000K	NW/IP65/IP67/IP68	3LED/2.5cm	5.5W/ft
SMD5050-300	10mm	W	3000K-6000K	NW/IP65/IP67/IP68	3LED/5cm	4.3W/ft

Unit:mm (1inch = 25mm = 2.5cm)

IP GRADE



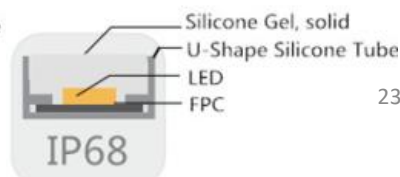
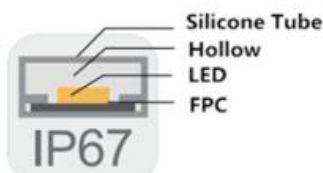
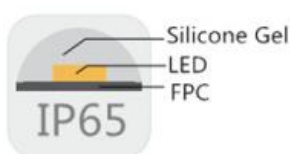
FEATURES

- * Wavelength : 660nm, 730nm, 810nm, 850nm and 940nm
- * 12V DC /24V DC
- * Max Length: 500cm (16.4ft), sold by different Lengths in 50cm, 100cm, 200cm, 300cm, 400cm, 500cm.
- * IP grade: Non-waterproof, IP65, IP67, IP68
- * PCB background: White



Model	Code No.	Wattage (W)	Dimension (L*W*H)-mm	Dim	Avg. Rated Life (hrs)	Wavelength
DC12V Contant Voltage 2825, 300LED Flex Strip 5Meter per roll	HK-F2835IR30-X	24W	5000*8*0.4	Yes	50000	850nm 940nm
DC12V Contant Voltage 2835, 600LED Flex Strip 5Meter per roll	HK-F2835IR60-X	48W	5000*8*0.4	Yes	50000	850nm 940nm
DC12V Contant Voltage 2835, 1200LED Flex Strip 5Meter per roll	HK-F2835IR120-X	96W	5000*15*0.4	Yes	50000	850nm 940nm
DC12V Contant Voltage 2835, 300LED Flex Strip 5Meter per roll	HK-F2835IR30-X	50W	5000*8*0.4	Yes	50000	850nm 940nm
DC12V Contant Voltage 5050, 150LED Flex Strip 5Meter per roll	HK-F5050IR15-X	36W	5000*10*0.2	Yes	50000	850nm 940nm
DC12V Contant Voltage 5050, 300LED Flex Strip 5Meter per roll	HK-F5050IR30-X	72W	5000*10*0.2	Yes	50000	850nm 940nm
DC12V Contant Voltage 5050, 600LED Flex Strip 5Meter per roll	HK-F5050IR60-X	144W	5000*15*0.2	Yes	50000	850nm 940nm

IP GRADE



UV (Ultraviolet) LED Flexible Strip

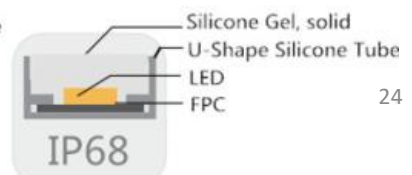
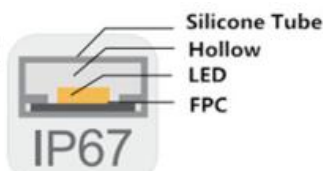
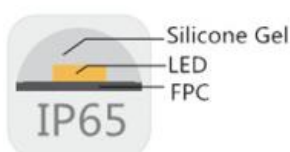
FEATURES

- * Wavelength : 365nm-370nm/395nm-400nm
- * 12V DC /24V DC
- * Max Length: 500cm (16.4ft), sold by different Lengths in 50cm, 100cm, 200cm, 300cm, 400cm, 500cm.
- * IP grade: Non-waterproof, IP65, IP67, IP68
- * PCB background: White
- * CE, ROHS approved



Model	Code No.	Wattage (W)	Dimension (L*W*H)-mm	Dim	Avg. Rated Life (hrs)	Wavelength
DC12V Contant Voltage 3528, 300LED Flex Strip 5Meter per roll	HK-F2835UV30-X	24W	5000*8*0.4	Yes	50000	395-405nm 365-370nm
DC12V Contant Voltage 3528, 600LED Flex Strip 5Meter per roll	HK-F2835UV60-X	48W	5000*8*0.4	Yes	50000	395-405nm 365-370nm
DC12V Contant Voltage 3528, 1200LED Flex Strip 5Meter per roll	HK-F2835UV120-X	96W	5000*15*0.4	Yes	50000	395-405nm 365-370nm
DC12V Contant Voltage 5050, 150LED Flex Strip 5Meter per roll	HK-F5050UV15-X	36W	5000*10*0.2	Yes	50000	395-405nm 365-370nm
DC12V Contant Voltage 5050, 300LED Flex Strip 5Meter per roll	HK-F5050UV30-X	72W	5000*10*0.2	Yes	50000	395-405nm 365-370nm
DC12V Contant Voltage 5050, 600LED Flex Strip 5Meter per roll	HK-F5050UV60-X	144W	5000*15*0.2	Yes	50000	395-405nm 365-370nm

IP GRADE



FEATURES

- * Wavelength : 275nm, 275nm+395nm Dual
- * LED: SMD3535
- * 12V DC
- * 3LEDs per 2" can be cut
- * Max Length: 500cm (16.4ft), sold by different Lengths in 50cm, 100cm, 200cm, 300cm, 400cm, 500cm.
- * IP grade: Non-waterproof, IP65, IP67, IP68
- * PCB background: White



Model	Code No.	Wattage (W)	Dimension (L*W*H)-mm	Dim	Avg. Rated Life (hrs)	Wavelength
DC12V Contant Voltage 3535, 300LED Flex Strip 5Meter per roll	HK-F3535UVAC30-X	60W	5000*8*0.4	Yes	50000	275nm+395nm
DC12V Contant Voltage 3535, 300LED Flex Strip 5Meter per roll	HK-F3535UVC30-X	60W	5000*8*0.4	Yes	50000	275NM

ITEM:

UVC LED Strip Light 275nm 395nm 3535 8W 30LED/Mtr Flex Strip for Sterilization, Germicidal Disinfection

SPECIFICATION

- * Ultraviolet LED SMD strip (peak wavelength 270nm)
- * Input Voltage: 12V DC
- * 30 LEDs/m
- * 8W/m rated power consumption
- * 5m/reel
- * Ideal for UVC sterilization



Application:

- ▶ Disinfection of home appliances, such as refrigerators, air conditioners, etc.
- ▶ Home disinfection, such as wardrobe, shoe cabinet, bedroom, kitchen, etc.
- ▶ Disinfect office areas, such as meeting rooms, offices, etc.
- ▶ For more help, please contact our sales staff.

UVC (Ultraviolet) LED Strip Light



ITEM:

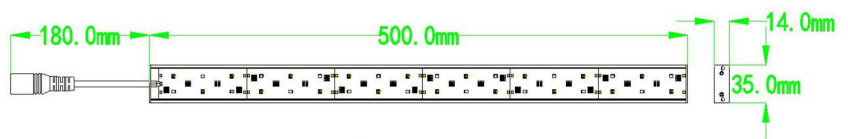
UVC LED Light Kit 275nm 3535 20W 36LED Light Bar for Sterilization, Germicidal Disinfection

Specification

- ▶ 20W UVC LED strip light
- ▶ 275nm + 395nm double chip 18+18pcs
- ▶ SMD3535 + SMD2835 double package
- ▶ Input Voltage: DC24Vdc
- ▶ Radiation Power : 30-35 mW/cm²
- ▶ 5cm is the best measuring distance for surface sterilization and 30minutes' sterilization is recommended
- ▶ within 6 square meters is the best area for air sterilization , recommending 60-120 minutes long for confined sterilization of 2-2.5m

Package Includes:

- 1x UV-C LED Light Bar
- 1x RF Controller
- 1x 24V, 1A Power Supply



Warning

UVC light below 400nm poses biological risks to human health. Use properly with a high degree of care during operation:

1. Do not look directly into a UV LED while it is in operation, as it can be harmful to the eyes, even for brief periods.
2. Use suitable UV filtered glasses or goggles to avoid damage to the eyes.
3. Avoid any direct eye exposure to the emission of a UV LED.
4. Avoid long-term exposure to skin or other tissue.
5. Keep the product out of the reach of children.
6. UVC-leds with wavelengths higher than 243 nm do not produce ozone

FEATURES

- * Fit for LED Flexible Strips
- * 12mm 5 lead RGBW
- * 10mm 4 lead RGB
- * 10mm 2 lead single color
- * 8mm 2 lead single color

Note:

To get full images for all, please find at next page

SKU	Code	Fit for strip models
1085476	HKC12mm-5PCCB	12mm wide 5lead RGBW/RGBWW/RGBNW LED strip
1085854	HKC12mm-5PCSBL	12mm wide 5lead RGBW/RGBWW/RGBNW LED strip
1085478	HKC12mm-5PCWCB	12mm wide 5lead RGBW/RGBWW/RGBNW LED strip
1085477	HKC12mm-5PCWB	12mm wide 5lead RGBW/RGBWW/RGBNW LED strip
1039352	HKC10mm-4PCWCB180CM	10mm wide 4lead RGB LED strip: SMD5050-150, SMD5050-300
1039351	HKC10mm-4PCWCB90CM	10mm wide 4lead RGB LED strip: SMD5050-150, SMD5050-300
1039350	HKC10mm-4PCWCB30CM	10mm wide 4lead RGB LED strip: SMD5050-150, SMD5050-300
1116485	HKC10mm-4PCWCB60CM	10mm wide 4lead RGB LED strip: SMD5050-150, SMD5050-300
1039349	HKC10mm-4PCSBX	10mm wide 4lead RGB LED strip: SMD5050-150, SMD5050-300
1039348	HKC10mm-4PCSBT	10mm wide 4lead RGB LED strip: SMD5050-150, SMD5050-300
1039347	HKC10mm-4PCSBL	10mm wide 4lead RGB LED strip: SMD5050-150, SMD5050-300
1039346	HKC10mm-4PCWCB	10mm wide 4lead RGB LED strip: SMD5050-150, SMD5050-300
1039345	HKC10mm-4PCWB	10mm wide 4lead RGB LED strip: SMD5050-150, SMD5050-300
1039344	HKC10mm-4PCCB	10mm wide 4lead RGB LED strip: SMD5050-150, SMD5050-300
1039343	HKC10mm-2PCWCB180CM	10mm wide 2lead single color LED strip: SMD5050-150, SMD5050-300, SMD5630-300
1039342	HKC10mm-2PCWCB90CM	10mm wide 2lead single color LED strip: SMD5050-150, SMD5050-300, SMD5630-300
1039341	HKC10mm-2PCWCB30CM	10mm wide 2lead single color LED strip: SMD5050-150, SMD5050-300, SMD5630-300
1039340	HKC10mm-2PCSBX	10mm wide 2lead single color LED strip: SMD5050-150, SMD5050-300, SMD5630-300
1039339	HKC10mm-2PCSBT	10mm wide 2lead single color LED strip: SMD5050-150, SMD5050-300, SMD5630-300
1039338	HKC10mm-2PCSBL	10mm wide 2lead single color LED strip: SMD5050-150, SMD5050-300, SMD5630-300
1039337	HKC10mm-2PCWCB	10mm wide 2lead single color LED strip: SMD5050-150, SMD5050-300, SMD5630-300
1039336	HKC10mm-2PCWB	10mm wide 2lead single color LED strip: SMD5050-150, SMD5050-300, SMD5630-300
1039335	HKC10mm-2PCCB	10mm wide 2lead single color LED strip: SMD5050-150, SMD5050-300, SMD5630-300
1039334	HKC10MM-2PPCB	10mm wide 2lead single color LED strip: SMD5050-150, SMD5050-300, SMD5630-300
1039333	HKC8MM-2PCWCB180CM	8mm wide 2lead single color LED strip: SMD3528-150, SMD3528-300, SMD2835-300, SMD335-300
1039332	HKC8MM-2PCWCB90CM	8mm wide 2lead single color LED strip: SMD3528-150, SMD3528-300, SMD2835-300, SMD335-300
1039331	HKC8MM-2PCWCB30CM	8mm wide 2lead single color LED strip: SMD3528-150, SMD3528-300, SMD2835-300, SMD335-300
1039330	HKC8MM-2PCSBX	8mm wide 2lead single color LED strip: SMD3528-150, SMD3528-300, SMD2835-300, SMD335-300
1039329	HKC8MM-2PCSBT	8mm wide 2lead single color LED strip: SMD3528-150, SMD3528-300, SMD2835-300, SMD335-300
1039328	HKC8MM-2PCSBL	8mm wide 2lead single color LED strip: SMD3528-150, SMD3528-300, SMD2835-300, SMD335-300
1039327	HKC8MM-2PCWCB	8mm wide 2lead single color LED strip: SMD3528-150, SMD3528-300, SMD2835-300, SMD335-300
1039326	HKC8MM-2PCWB	8mm wide 2lead single color LED strip: SMD3528-150, SMD3528-300, SMD2835-300, SMD335-300
1039325	HKC8MM-2PCCB	8mm wide 2lead single color LED strip: SMD3528-150, SMD3528-300, SMD2835-300, SMD335-300
1039324	HKC8MM-2PPCB	8mm wide 2lead single color LED strip: SMD3528-150, SMD3528-300, SMD2835-300, SMD335-300
1039323	HKC10MM-4PCWCC180CM	10mm wide 4lead RGB LED strip: SMD5050-150, SMD5050-300
1039322	HKC10MM-4PCWCC90CM	10mm wide 4lead RGB LED strip: SMD5050-150, SMD5050-300
1039321	HKC10MM-4PCWCC30CM	10mm wide 4lead RGB LED strip: SMD5050-150, SMD5050-300
1039320	HKC10MM-4PCWCC	10mm wide 4lead RGB LED strip: SMD5050-150, SMD5050-300
1039319	HKC10MM-4PCWC	10mm wide 4lead RGB LED strip: SMD5050-150, SMD5050-300
1039318	HKC10MM-4PCCC	10mm wide 4lead RGB LED strip: SMD5050-150, SMD5050-300
1039317	HKC10MM-2PCWCC180CM	10mm wide 2lead single color LED strip: SMD5050-150, SMD5050-300, SMD5630-300
1039316	HKC10MM-2PCWCC90CM	10mm wide 2lead single color LED strip: SMD5050-150, SMD5050-300, SMD5630-300
1039315	HKC10MM-2PCWCC30CM	10mm wide 2lead single color LED strip: SMD5050-150, SMD5050-300, SMD5630-300
1039314	HKC10MM-2PCWCC	10mm wide 2lead single color LED strip: SMD5050-150, SMD5050-300, SMD5630-300
1039313	HKC10MM-2PCWC	10mm wide 2lead single color LED strip: SMD5050-150, SMD5050-300, SMD5630-300
1039312	HKC10MM-2PCCC	10mm wide 2lead single color LED strip: SMD5050-150, SMD5050-300, SMD5630-300
1039311	HKC8MM-2PCWCC180CM	8mm wide 2lead single color LED strip: SMD3528-150, SMD3528-300, SMD3528-600, SMD2835-300, SMD335-300, SMD335-600
1039310	HKC8MM-2PCWCC90CM	8mm wide 2lead single color LED strip: SMD3528-150, SMD3528-300, SMD3528-600, SMD2835-300, SMD335-300, SMD335-600
1039309	HKC8MM-2PCWCC30CM	8mm wide 2lead single color LED strip: SMD3528-150, SMD3528-300, SMD3528-600, SMD2835-300, SMD335-300, SMD335-600
1039308	HKC8MM-2PCWCC	8mm wide 2lead single color LED strip: SMD3528-150, SMD3528-300, SMD3528-600, SMD2835-300, SMD335-300, SMD335-600
1039307	HKC8MM-2PCWC	8mm wide 2lead single color LED strip: SMD3528-150, SMD3528-300, SMD3528-600, SMD2835-300, SMD335-300, SMD335-600
1039306	HKC8MM-2PCCC	8mm wide 2lead single color LED strip: SMD3528-150, SMD3528-300, SMD3528-600, SMD2835-300, SMD335-300, SMD335-600

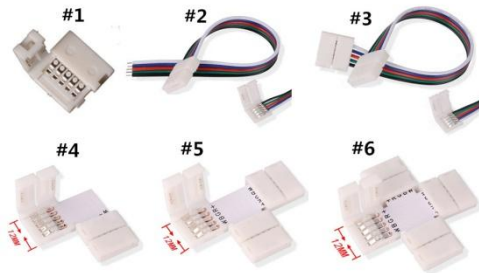
LED Strip Connectors

FEATURES

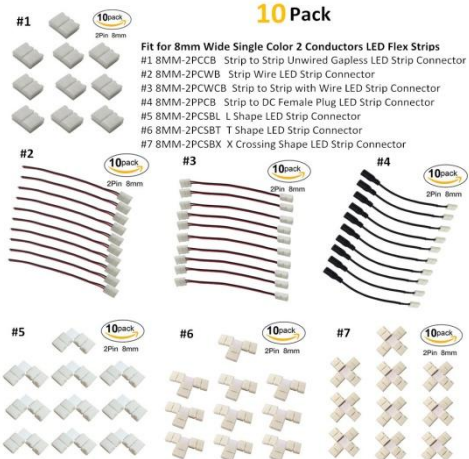
- * Fit for LED Flexible Strips
- * 12mm 5 lead RGBW
- * 10mm 4 lead RGB
- * 10mm 2 lead single color
- * 8mm 2 lead single color
- * Custom lengths available

RGBW LED Strip Connectors

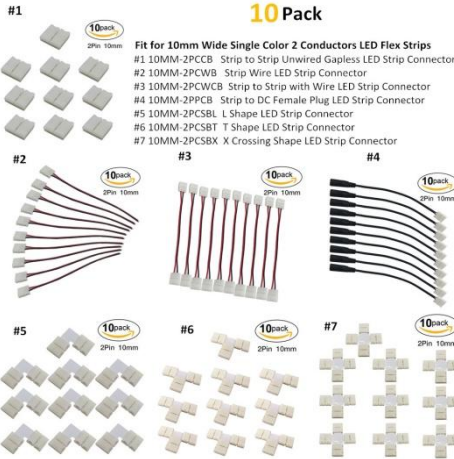
Fit for 12mm Wide 5 Conductors RGBW Color LED Flexible Strip Lights
 #1 12MM-5PCCB Strip to Strip Unwired Gapless LED Strip Connector
 #2 12MM-5PCWB Strip Wire LED Strip Connector
 #3 12MM-5PCSB Strip to Strip with Wired Gapless LED Strip Connector
 #4 12MM-5PCBSL L Shape LED Strip Connector
 #5 12MM-5PCSBT T Shape LED Strip Connector



10 Pack



10 Pack



10 Pack



Fit for 8mm Wide Single Color LED Flexible Strip

- #1 8MM-2PCCC
- #2 8MM-2PCWC
- #3 8MM-2PCWCC



Fit for 10mm Wide Single Color LED Flexible Strip

- #1 10MM-2PCCC
- #2 10MM-2PCWC
- #3 10MM-2PCWCC



Fit for 10mm Wide RGB 5050 LED Flexible Strip

- #1 10MM-4PCCC
- #2 10MM-4PCWC
- #3 10MM-4PCWCC



PROFILE LINEAR LIGHTING SOLUTION



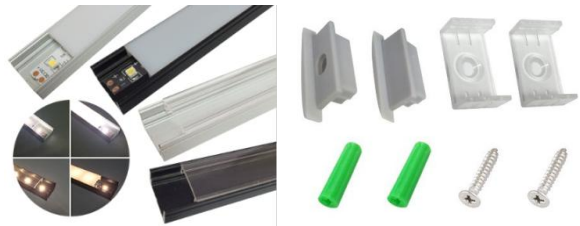
FEATURES

- * Air-craft grade Aluminum
- * Max length: 3Meters
- * Custom-work acceptable
- * Finish Color: Silver / Black
- * Diffuser option:
Oyster White (OW),
Transparent (TP),
Frosted (FT)
- * Accessories included:
End Caps, Mounting Clips, Screws



APPLICATIONS

- * For LED strip lights mounting



GENERAL



	Mounting Way	Finish Color	Fit for Strip Width	Lens Color Options	Max Width	Max Height	Inner Deepth
U01		Silver/Black	<=12mm	OW/TP/FT	23mm	9mm	8mm
U02		Silver/Black	<=12mm	OW/TP/FT	17mm	9mm	8mm
U03		Silver/Black	<=20mm	OW/TP/FT	30mm	10.84mm	8mm
U04		Silver/Black	<=20mm	OW/TP/FT	23.5mm	10.84mm	8mm
U05		Silver/Black	<=20mm	OW/TP/FT	35.8mm	24mm	20mm
U06		Silver/Black	<=20mm	OW/TP/FT	23.5mm	24mm	20mm
V01		Silver/Black	<=12mm	OW/TP/FT	16mm	16mm	8mm
V02		Silver/Black	<=12mm	OW/TP/FT	16mm	16mm	8mm
V03		Silver/Black	<=12mm	OW/TP/FT	18.4mm	18.4mm	8mm

Unit:mm (1inch = 25mm)

LED UNDER CABINET LIGHTS



◀ Bookcase
keep your
books and
Artwork shine
out of Corner

Desk ▶



◀ Bathroom lens headlight
only occupied a small space
can bring enough light for the
bathroom , rapidly enhance the
visual effect, enjoy the beauty
of the light

UNDER CABINET LED LIGHT -B Series



Kitchen



Wardrobe



Bedside



Toilet



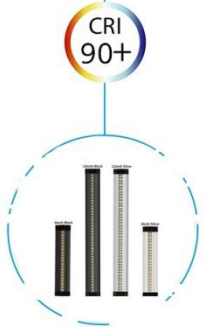
Stairs / Entrance



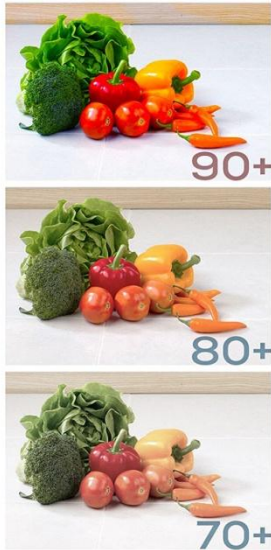
Wine cabinet

UNDER CABINET LED LIGHT STRIP

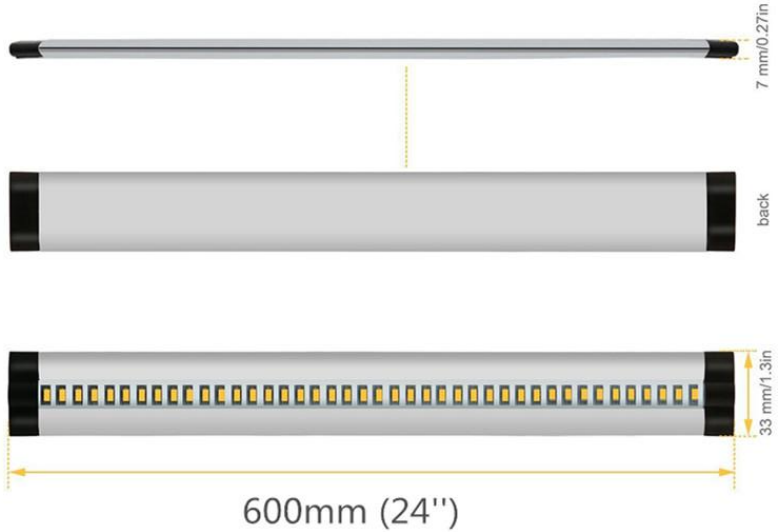
NEXT GENERATION
CRI Technology



See all colors the way they are supposed to be seen



Ultra Slim, thinner than iPhone 7



FEATURES

- * 12V DC / 5V DC
- * Powered by high quality SMD LED
- * CCT: 2700K/3000K/4000K/6000K
- * 60+ LM/W
- * 90+ CRI
- * Aluminum + PC
- * Clear Difusser
- * Silver / Black finish
- * Mini USB port
- * Dim with compatible controller
- * 2 years warranty
- * CE, ROHS, FCC approved

GENERAL

	Wattage (W)	CCT (Kelvin)	Lumen (LM)	Voltage (DC)	Finish Color
6in	3	27/30/40/60K	150	12V/5V	Silver Black
12in	5	27/30/40/60K	300	12V/5V	Silver Black
24in	10	27/30/40/60K	600	12V/5V	Silver Black

Unit:mm (1inch = 25mm)

APPLICATION

- * Kitchen
- * Jewellery Store
- * Bar
- * Display case
- * Cabinet
- * Bookshelf
- * Exhibition Shelf

ACCESSORIES

Dimmer



Power Supply



USB to DC Cable



Sticker



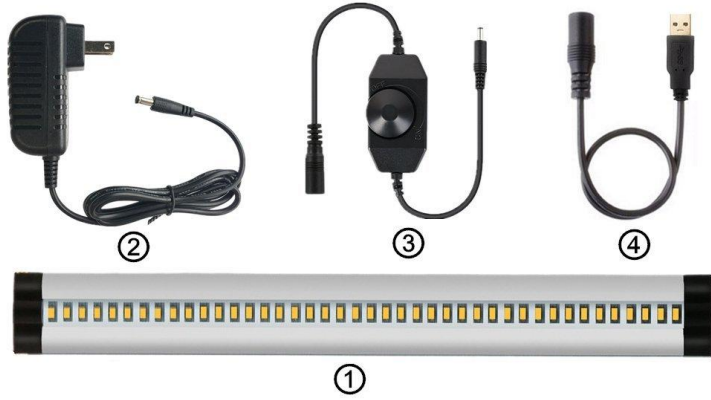
USB to USB Cable



Warm White

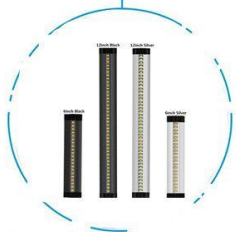
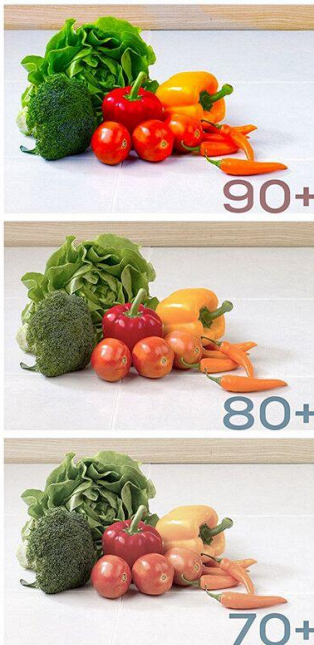


Package Includes:



- ①: 1x 12-inch LightingWill LED Under Cabinet Light Bar
 - ②: 1x DC 12V 1Amp Power Adapter
 - ③: 1x Rotary Dimmer
 - ④: 1x DC to USB Adapter Cable
- More: 2x 3M Double-Sided Adhesive Tape

NEXT GENERATION CRI Technology



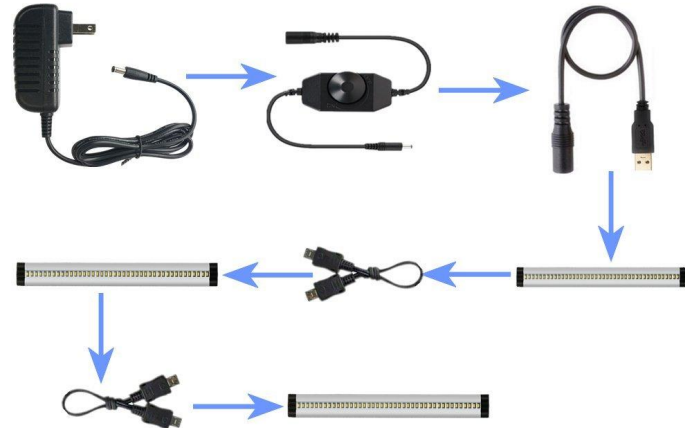
See all colors the way they are supposed to be seen

Installation Guide: Power Adapter + Dimmer + USB Cable + Light Bar



Less Accessories, More Convenience.

Installation Guide: Power Adapter + Dimmer + USB Cable + Light Bar + Cable + Light Bar + Cable + Light Bar



Less Accessories, More Convenience.

Dimmable



LED Puck Lights

Various Usage
Smart Touch Dimmer
Handle with One Finger



3PACK

CRI 90+
DIMMABLE



Finish Colors



Alternative Dimmers



The package of 3*2W LED lights is for your references, Available for any LED light quantity per kit

Package Included:

- * 3 x 2W LED under cabinet puck light
- * 1 x Junction Box
- * 1 x 12V 1A power adapter(The power plug will be matched with your Country, we supply US power plug, UK power plug, Europe power plug, and Australia power plug.)
- * 1 x Dimmer (RF Wireless Controller / Touch Control Dimmer / Knob Control Dimmer)
- * 3 x double-sided adhesive sticker
- * 6 x Screw

UNDER CABINET LED LIGHT -A Series

Individual Puck Spec.

- * Individual Puck Power: 2W/Puck
- * Individual Puck Size: Dia.2.36 inch,
- * Thickness: 0.31 inch
- * Individual Puck Output Lumen: 150lm-170lm
- * Individual Puck Input Voltage: 12V DC
- * LED lifespan: 50,000 hours or more



APPLICATION

- * Kitchen
- * Jewellery Store
- * Bar
- * Display case
- * Cabinet
- * Bookshelf
- * Exhibition Shelf

Features:

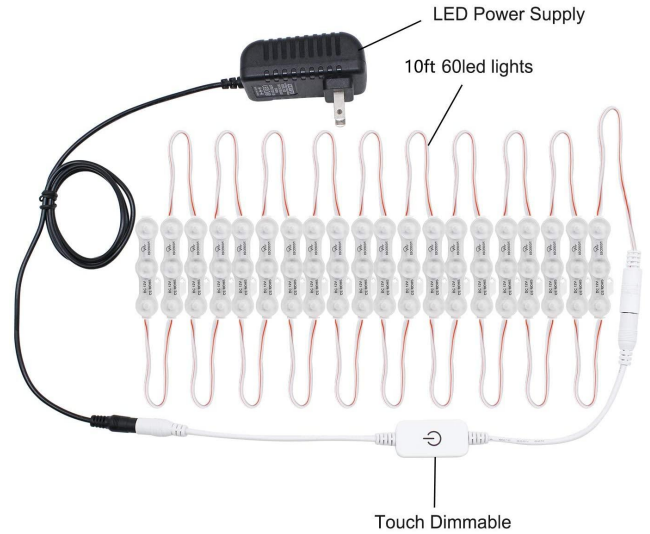
- * Material: Aluminum alloy shell + PC cover
- * Switch Style: RF Wireless Controller / Touch control dimmer / Knob control dimmer (alternative)
- * Dimmable: Yes
- * Ultra Thin: Suitable for narrow under cabinet
- * Cable Length: 6.56ft for each puck light, 40 inch for power adapter, 40 inch for distributor
- * Installation : 3M Double-sided adhesive Tape
- * Pure White(5500K-6500K),
Neature White(4000K-4500K),
Warm White(3000K-3500K),
Ultra Warm White(2700K-3000K)



LED MIRROR LIGHTS



LED MIRROR LIGHT STRING -Wave Series



Item: DIY Hollywood Style LED Vanity Mirror Lights Kit Dimmable Lighting, 10FT/24W-60leds, Daylight White, Waterproof IP67 Under Cabinet Lighting, Kitchen Lighting with Touch Dimmable and Power Supply

Specification

- * 20pcs LED Module per String
- * Total Length: 10 Feet
- * Power: 24W
- * Operating Voltage: 110V /220V AC (via transformer)
- * Color Temperature: 6500K White
- * Dimmable via Touch Dimmer
- * Intallation: Stick on with double-sided adhesive tape

Package Included:

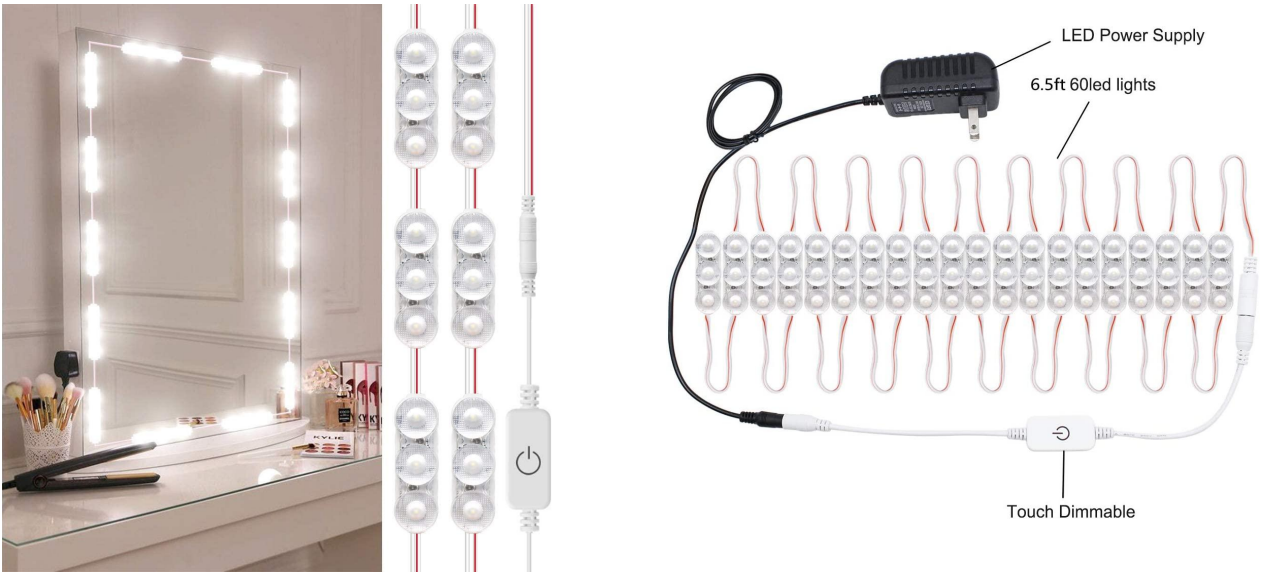
- LED Mirror Light Module x 20
- 12V 2A Power Supply x 1
- Dimmer x 1
- Instruction manual x 1



Touch Dimming

Short touch to turn on/off
Long touch to adjust the brightness

LED MIRROR LIGHT STRING -Mini Series



Item: DIY Hollywood Style LED Vanity Mirror Lights Kit Dimmable Lighting, 6.5FT/20W-60leds, Daylight White, Waterproof IP67 Under Cabinet Lighting, Kitchen Lighting with Touch Dimmable and Power Supply

Specification

- * 10pcs LED Bulbs per String
- * Total Length: 6.5 Feet
- * Power: 20 W
- * Operating Voltage: 110V /220V AC (via transformer)
- * Color Temperature: 6500K White
- * Dimmable via Touch Dimmer
- * Intallation: Stick on with double-sided adhesive tape

Package Included:

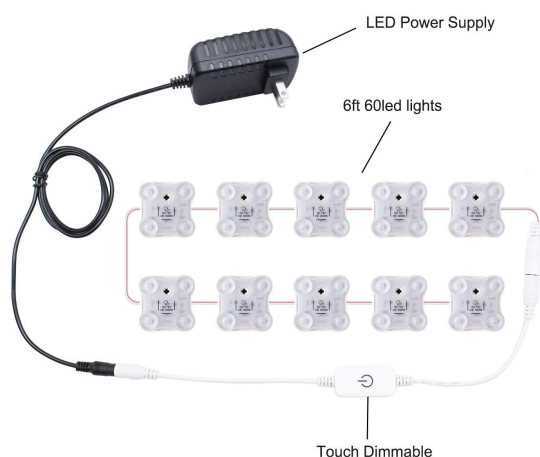
- LED Mirror Light Module x 20
- 12V 2A Power Supply x 1
- Dimmer x 1
- Instruction manual x 1



Touch Dimming

Short touch to turn on/off
Long touch to adjust the brightness

LED MIRROR LIGHT STRING -Butterfly Series



Item: DIY Hollywood Style LED Vanity Mirror Lights Kit Dimmable Lighting, 6FT/20W-60leds, Daylight White, Waterproof IP67 Under Cabinet Lighting, Kitchen Lighting with Touch Dimmable and Power Supply

Specification

- * 10pcs LED Bulbs per String
- * Total Length: 6 Feet
- * Power: 20W
- * Operating Voltage: 110V /220V AC (via transformer)
- * Color Temperature: 6500K White
- * Dimmable via Touch Dimmer
- * Intallation: Stick on with double-sided adhesive tape

Package Included:

- LED Mirror Light Module x 10
- 12V 2A Power Supply x 1
- Dimmer x 1
- Instruction manual x 1



Touch Dimming

Short touch to turn on/off
Long touch to adjust the brightness

10 Bulbs (1.77") LED Mirror Light - CCT Adjustable



Item: Hollywood Style Vanity Mirror Lights, 12 Vanity Makeup LED Light Bulbs with Dimmable Touch Sensor for Makeup Mirror

Specification

- * 10pcs LED Bulbs per String
- * Total Length: 17"
- * Power: 10W
- * Bulb Diameter : 1.77inch
- * Operating Voltage: 5VDC
- * Color Temperature (CCT) : 3000K/4000K/6500K adjustable
- * Dimmable : 9 level selectable
- * Intallation: Stick on with double-sided adhesive tap
- * USB cable length: 200mm

Package Included:

- LED Mirror Bulbs x 10
- Double-sided Adhesive Tape x 10
- Dimmer x 1
- Instruction manual x 1

Note: This Mirror Light String Can Be Powered By 5V 2A or Bigger Power Supply or Power Bank (Not Included)

3 Color Modes



12 Bulbs (1.75") LED Mirror Light - Hollywood Style



Item: Hollywood Style Vanity Mirror Lights, 12 Vanity Makeup LED Light Bulbs with Dimmable Touch Sensor for Makeup Mirror

Specification

- * Length: 17.38" per string
- * 12pcs LED Bulbs per String
- * Bulb Diameter : 1.75inch
- * Power :12W
- * Operating Voltage: 110V /220V AC (via transformer)
- * Lumen Output: <150LM;
- * CRI >80
- * Colors : 7000K-8000K White
- * Dimmable via touch dimmer

Package Included:

- Dimmable Bulbs x 12
- 12V 2A Power Adapter x 1
- Touch Dimmer x 1
- Instruction manual x 1



12 Bulbs (1.18") LED Mirror Light - Hollywood Style



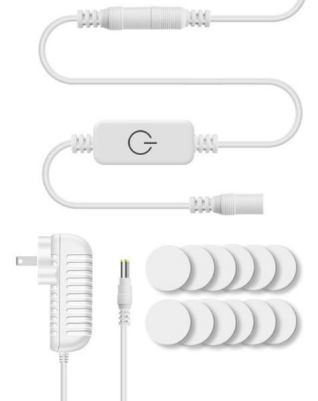
Item: Hollywood Style Vanity Mirror Lights, 12 Vanity Makeup LED Light Bulbs with Dimmable Touch Sensor for Makeup Mirror

Specification

- * Length: 11.15 ft (not included the length of power supply and touch sensor)
- * 12pcs LED Bulbs per String
- * Bulb Diameter : 1.18 inch
- * Operating Voltage: 110V /220V AC (via transformer)
- * Lumen Output: <150LM;
- * CRI >80
- * Colors : 7000K - 8000K White
- * Dimmable via touch dimmer

Package Included:

- Dimmable Bulbs x 12
- 12V 2A Power Adapter x 1
- Touch Dimmer x 1
- Instruction manual x 1



LED GROW LIGHTING SOLUTION



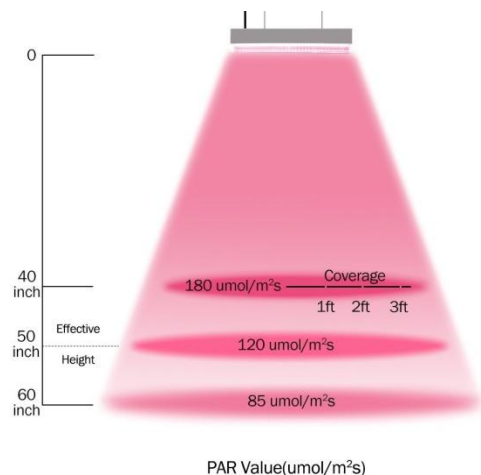
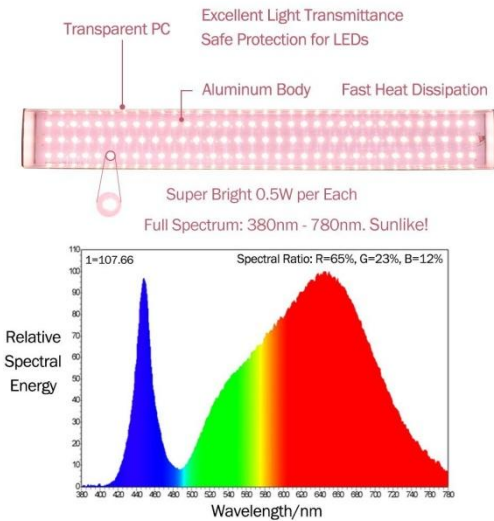
FULL SPECTRUM LINEAR LED GROW LIGHTING SYSTEM

FEATURES

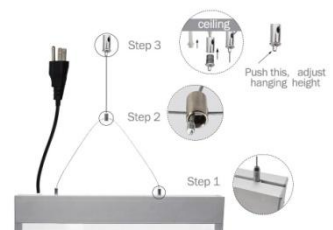
- * #6 Full Spectrum LED
(R: 65%, G: 23%, B: 12%)
- * Popular for whole growth stage
- * Redish Pink Light Color
- * 100-240V AC
- * 80W/Meter
- * Powered by 5730 0.5W LED
- * Aluminum + PC
- * US/EU direct power plug in
- * Beam angle: 180°
- * IP63 Protection Grade
- * 3 years warranty
- * CE, ROHS approved
- * Suspension Hardware included
- * Custom lengths available within 300cm Long



GENERAL



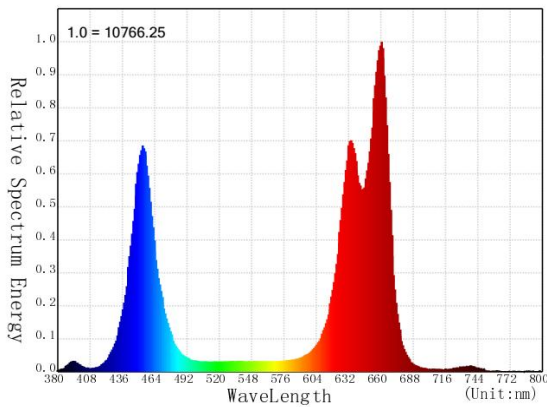
Part #.	HKPGL-#6FS40W40CM
Power Consumption(W)	40W
Input Voltage	100-240 V AC
Light Source	SMD 5730
Material	Aluminum + Plastic
Beam Angle	180 °
IP Grade	IP63
Dimming	Non
Dimension	40.5*7.5*5 (L*W*H-CM)
Plug Cable Length	120cm



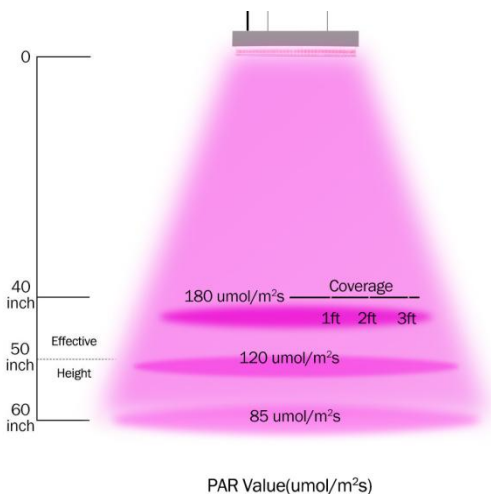
FULL SPECTRUM LINEAR LED GROW LIGHTING SYSTEM

FEATURES

- * 6 Bands Full Spectrum LED
- * **Popualr for Flowering & Fruiting**
- * Pinkish Purple Light Color
- * 100-240V AC
- * 70W/Meter
- * Powered by 5730 0.5W LED
- * Aluminum + PC
- * US/EU direct power plug in
- * Beam angle: 180°
- * IP63 Protection Grade
- * 3 years warranty
- * CE, ROHS approved
- * Suspension Hardware included
- * Custom lengths available within 300cm Long

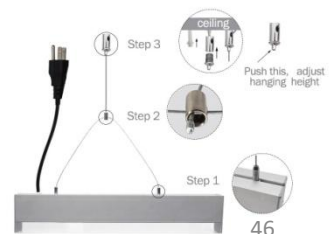


6 Bands Full Spectrum LED
 (Red 660nm & 620nm, Blue 450nm,
 IR 740nm, UV 390nm, White 6000K)



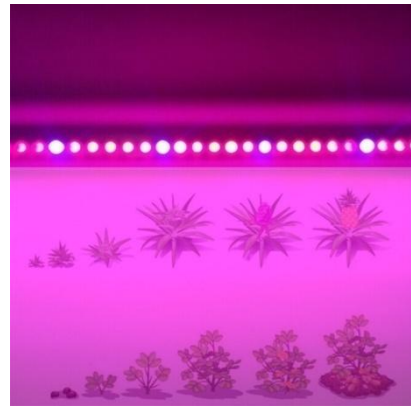
GENERAL

Part #.	HKPGL-6B35W50CM
Power Consumption(W)	35W
Input Voltage	100-240 V AC
Light Source	SMD 5730
Material	Aluminum + Plastic
Beam Angle	180 °
IP Grade	IP63
Dimming	Non
Dimension	40.5*7.5*5 (L*W*H-CM)
Plug Cable Length	120cm



FEATURES

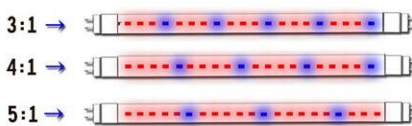
- * RED 660nm, BLUE 460nm
- * Pinkish Purple Light Color
- * 85-265V AC
- * 2FT/3FT/4FT T8 LED Tube
- * Powered by 2835 0.2W LED
- * Aluminum + Transparent PC
- * G13/FA8/R17D Base
- * Beam angle: 160°
- * 2 years warranty
- * CE, ROHS approved
- * Ballast By-Pass, Dual-end power feed



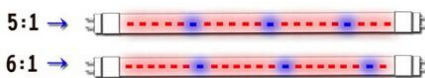
APPLICATIONS

Used as plant growth supplementary lighting.
Widely used in vegetable greenhouse,
Vegetables & Fruits, Floriculture, propagation,
city farming.

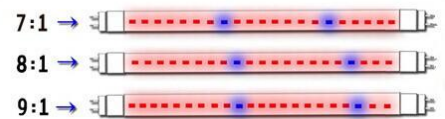
Part #	Length	Power	Color	Input Voltage	Cover	Dimming
HK-T8-5:1L1218PG-TP-ND	4ft	15Watt	Red:Blue=5:1	85-265V AC	Transparent	NO
HK-T8-7:1L1218PG-TP-ND	4ft	15Watt	Red:Blue=7:1	85-265V AC	Transparent	NO
HK-T8-5:1L0915PG-TP-ND	3ft	12Watt	Red:Blue=5:1	85-265V AC	Transparent	NO
HK-T8-8:1L0915PG-TP-ND	3ft	12Watt	Red:Blue=8:1	85-265V AC	Transparent	NO
HK-T8-5:1L0610PG-TP-ND	2ft	8Watt	Red:Blue=5:1	85-265V AC	Transparent	NO



The Light RED:BLUE rated at 3:1, 4:1, 5:1 are good to accelerate the GROWTH of LEA Like Lettuce, Spinach, Cabbage



The Light RED:BLUE rated at 5:1, 6:1 are good for plant that need light fill in the whole growth period. Like Leaf Succulent.



The Light RED:BLUE rated at 7:1, 8:1, 9:1 are good to accelerate the GROWTH of ROOT. Like for Tomato, Cucumber, Eggplant, Color Pepper, Long Bean and so on.



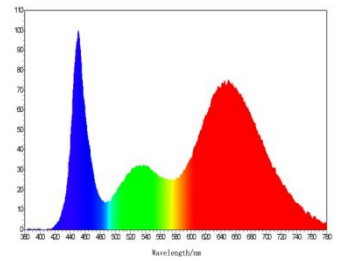
FLEXIBLE LED GROW LIGHT STRIPS

FEATURES

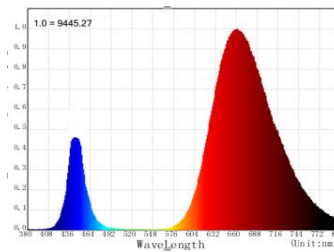
- * RED 660nm, BLUE 460nm
- * FULL SPECTRUM
- * 12V DC
- * 60LED/Meter
- * 12Watt/Meter
- * 3LED per 5cm (2") can be cut
- * 5Meter (16.4FT)/ROLL
- * Powered by 2835 0.2W LED
- * White PCB Background
- * IP65 Waterproof Grade
- * Beam angle: 120°
- * CE, ROHS approved



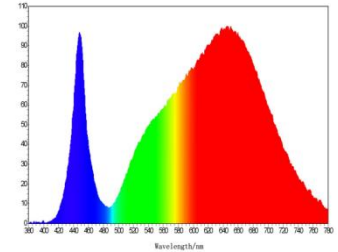
#4 Full Spectrum



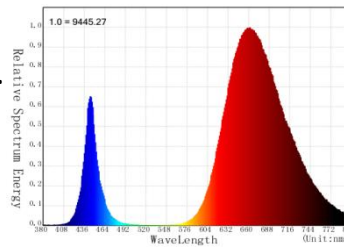
Red & Blue 5:1



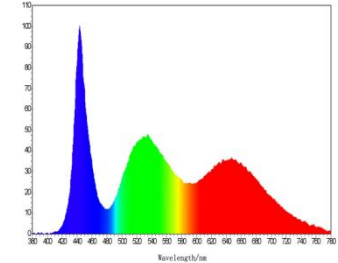
#6 Full Spectrum



Red & Blue 8:1



#10 Full Spectrum



APPLICATIONS

Used as plant growth supplementary lighting.
Widely used in vegetable greenhouse,
Vegetables & Fruits, Floriculture,
propagation, city farming.

Product Parameter

Item	LED Grow Light Strip				
Part #	5M-HK-5:1F2835PG30-SI-W-12	5M-HK-8:1F2835PG30-SI-W-12	5M-HK-F2835#4PG30-SI-W-12	5M-HK-F2835#6PG30-SI-W-12	5M-HK-F2835#10PG30-SI-W-12
Description	Red & Blue 5:1	Red & Blue 8:1	#4 Full Spectrum	#6 Full Sepctrum	#10 Full Spectrum
Color	Redish-Pink	Redish-Pink	Redish-White	Redish-Pink	Cold White
Used for	Vegetable&Fruit	Vegetable&Fruit	Whole Plant Growth	Flowering&Fruit	Propagation
LED Type	0.2W/LED SMD2835				
LED QTY.	60LED/meter				
Wattage	12W/Meter				
Voltage	12V DC				
Protection Grade	IP65				
Beam Angle	120 Degree				
Background	8mm White PCB				
Accessories	Adhesive Backing				
Max length	5Meter (16.4ft) per roll				
Installation Height	15-50cm away from the plant				
Life Time	50,000 Hours				

RIGID LED GROW LIGHT STRIP

FEATURES

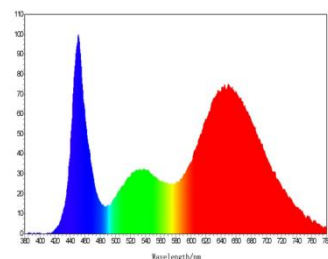
- * RED 660nm, BLUE 460nm
- * FULL SPECTRUM
- * Aluminum Shell Light Bar
- * 12V DC
- * 72LED/Meter
- * 14Watt/Meter
- * Max Length: 300cm, Lengths can be custom-made
- * Powered by 2835 0.2W LED
- * IP65 Waterproof Grade
- * Beam angle: 120°
- * CE, ROHS approved

APPLICATIONS

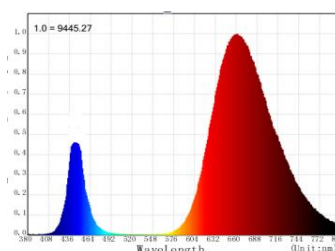
Used as plant growth supplementary lighting. Widely used in vegetable greenhouse, Vegetables & Fruits, Floriculture, propagation, city farming.



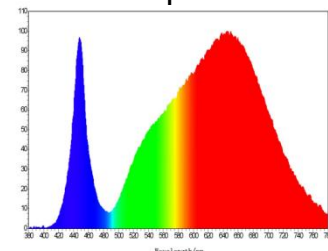
#4 Full Spectrum



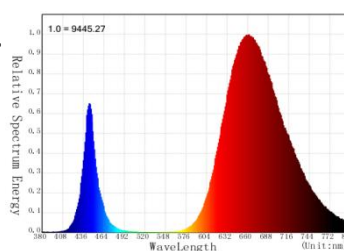
Red & Blue 5:1



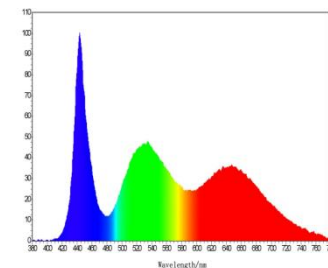
#6 Full Spectrum



Red & Blue 8:1



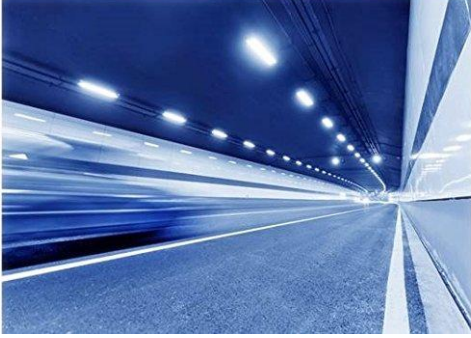
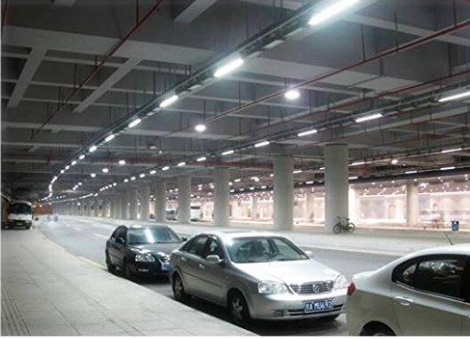
#10 Full Spectrum



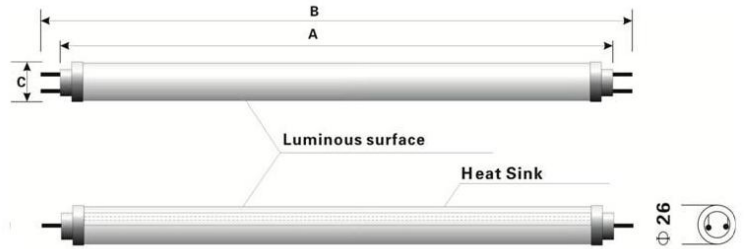
Product Parameter

Item	LED Grow Light Strip				
Part #	1M-HKAUR2835-5:1PG30IP65-12	1M-HKAUR2835-8:1PG30IP65-12	1M-HKAUR2835-#4PG30IP65-12	1M-HKAUR2835-#6PG30IP65-12	1M-HKAUR2835-#10PG30IP65-12
Description	Red & Blue 5:1	Red & Blue 8:1	#4 Full Spectrum	#6 Full Sepctrum	#10 Full Spectrum
Color	Redish-Pink	Redish-Pink	Redish-White	Redish-Pink	Cold White
Used for	Vegetable&Fruit	Vegetable&Fruit	Whole Plant Growth	Flowering&Fruit	Propagation
Item	Aluminum Channel Rigid LED Grow Light Strip				
LED Type	0.2W/LED SMD2835				
LED QTY.	72LED/100cm				
Wattage	14Watt/100cm				
Voltage	12V DC				
Protection Grade	IP65				
Beam Angle	120 Degree				
Length	100CM per piece				
Accessories	Pre-weld with 15cm DC female and male connector at both ends				
Mounting	Using screws to fix				
Installation Height	15-50cm away from the plant				

LED TUBE LIGHTS



T8 LED TUBE LIGHT-High-Light-Ballast Compatible



FEATURES

- * Input 90-277V AC
- * Powered by high quality SMD LED
- * CCT: 3000K / 4000K / 6000K
- * 130+ LM/W (Super Bright)
- * 90+ CRI / 80+ CRI
- * Aluminum + PC
- * Frosted /Clear Difusser
- * Socket: G13/Fa8/R17D
- * Beam Angle: 160 °
- * NOT dimming
- * 2 years warranty
- * CE, ROHS, FCC approved
- * Dual- End Powered
- * **Ballast Compatible**
- * **-Direct Replacement**

GENERAL

	Wattage (W)	Dimension (A, B, C-mm)	Lumen	Dim
2ft	10	A:590,B:604,C:29	1300	NO
3ft	15	A:892,B:906,C:29	1950	NO
4ft	18	A:1198,B:1212,C:29	2340	NO
4ft	25	A:1198,B:1212,C:29	3250	NO
5ft	25	A:1503,B:1517,C:29	3250	NO
8ft	36	A:2383,B:2397,C:29	4680	NO

Unit:mm (1inch = 25mm)

APPLICATIONS

- * Shopping mall
- * Office
- * Hotel
- * Fashion store
- * Showroom
- * Museum
- * Art gallery
- * Household
- * Living room
- * Walkway



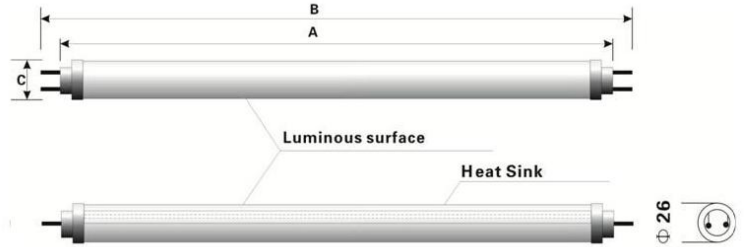
G13



FA8



T8 LED TUBE LIGHT-Ballast By-Pass



FEATURES

- * Input 90-130V / 200-240V AC
- * Powered by high quality SMD LED
- * CCT: 3000K / 4000K / 6000K
- * 90+ LM/W
- * 90+ CRI / 80+ CRI
- * Aluminum + PC
- * Frosted /Clear Difusser
- * Socket: G13/FA8/R17D
- * Beam Angle: 160 °
- * TRIAC dimming
- * 2 years warranty
- * CE, ROHS, FCC approved
- * **Ballast By-pass**
- * **-Need take away the old ballast**

GENERAL

	Wattage (W)	Dimension (A, B, C-mm)	Lumen	Dim
2ft	10	A:590,B:604,C:29	900	Yes
3ft	15	A:892,B:906,C:29	1400	Yes
4ft	18	A:1198,B:1212,C:29	1700	Yes
5ft	25	A:1503,B:1517,C:29	2400	NO
8ft	36	A:2383,B:2397,C:29	3400	NO

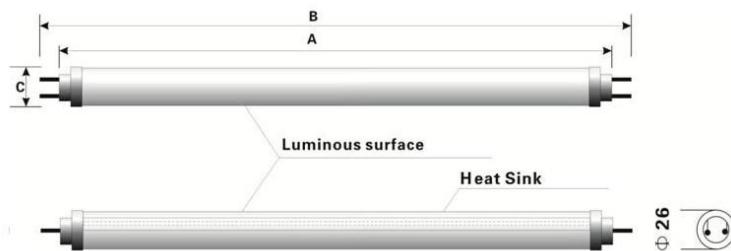
Unit:mm (1inch = 25mm)

APPLICATIONS

- * Shopping mall
- * Office
- * Hotel
- * Fashion store
- * Showroom
- * Museum
- * Art gallery
- * Household
- * Living room
- * Walkway



T8 LED TUBE LIGHT-V-Look 270 ° -Ballast Compatible



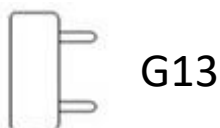
FEATURES

- * Input 90-277V AC
- * Powered by high quality SMD LED
- * CCT: 3000K / 4000K / 6000K
- * 130+ LM/W (Super Bright)
- * 90+ CRI / 80+ CRI
- * Aluminum + PC
- * Frosted /Clear Difusser
- * Socket: G13
- * **Beam Angle: 270 °**
- * NOT dimming
- * 2 years warranty
- * CE, ROHS, FCC approved
- * Dual- End Powered
- * **Ballast Compatible**

GENERAL

	Wattage (W)	Dimension (A, B, C-mm)	Lumen	Dim
2ft	14	A:590,B:604,C:29	1800	NO
3ft	18	A:892,B:906,C:29	2300	NO
4ft	25	A:1198,B:1212,C:29	3250	NO
5ft	35	A:1503,B:1517,C:29	4550	NO

Unit:mm (1inch = 25mm)

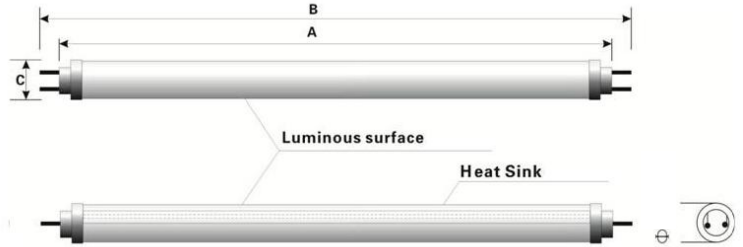


APPLICATIONS

- * Shopping mall
- * Office
- * Hotel
- * Fashion store
- * Showroom
- * Museum
- * Art gallery
- * Household
- * Living room
- * Walkway
- * Entertainment places, etc.



T5 LED TUBE LIGHT-High Light-Ballast By-Pass



FEATURES

- * Input 90-130V / 200-240V AC
- * Powered by high quality SMD LED
- * CCT: 3000K / 4000K / 6000K
- * 130+ LM/W
- * 90+ CRI / 80+ CRI
- * Aluminum + PC
- * Frosted /Clear Difusser
- * Socket: G5 bi-pin
- * Beam Angle: 160 °
- * Not dimming
- * 2 years warranty
- * CE, ROHS, FCC approved
- * **Ballast Compatible**
- * **-Direct Replacement**

GENERAL

	Wattage (W)	Dimension (A, B, C-mm)	Lumen	Dim
1ft	5	A:356,B:363,C:17	650	NO
2ft	10	A:556,B:563,C:17	1300	NO
3ft	15	A:856,B:863,C:17	1950	NO
4ft	18	A:1156,B:1163,C:17	2340	NO
4ft	25	A:1156,B:1163,C:17	3200	NO

Unit:mm (1inch = 25mm)

APPLICATIONS

- * Shopping mall
- * Office
- * Hotel
- * Fashion store
- * Showroom
- * Museum
- * Art gallery
- * Household
- * Living room, etc.



T5 INTEGRATED LED TUBE LIGHT



FEATURES

- * Input 90-130V / 200-240V AC
- * Powered by high quality SMD LED
- * CCT: 3000K / 4000K / 6000K
- * 130+ LM/W
- * 90+ CRI / 80+ CRI
- * Aluminum + PC
- * Frosted /Clear Difusser
- * Direct-wired
- * Beam Angle: 270 °
- * TRIAC dimming
- * 2 years warranty
- * CE, ROHS, FCC approved
- * Integrated with fixture,
mounting by bracket and screws

GENERAL

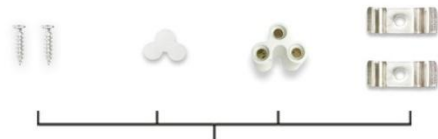
	Wattage (W)	Dimension (mm)	Lumen	Dim
1ft	5	L:296,W:23,H:35	650	Yes
2ft	10	L:570,W:23,H:35	1300	Yes
3ft	15	L:875,W:23,H:35	1950	Yes
4ft	18	L:1178,W:23,H:35	2340	Yes
5ft	25	L:1490,W:23,H:35	3250	NO

Unit:mm (1inch = 25mm)

APPLICATIONS

- * Shopping mall
- * Office
- * Hotel
- * Fashion store
- * Showroom
- * Museum
- * Art gallery
- * Household
- * Living room
- * Walkway
- * Entertainment places, etc

PRODUCT ACCESSORIES



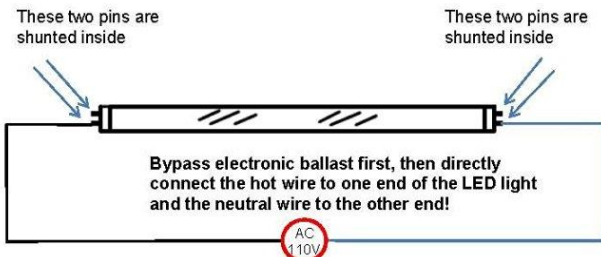
7.8 inch



59 inch



Product Manual for Double-End Input LED Tube

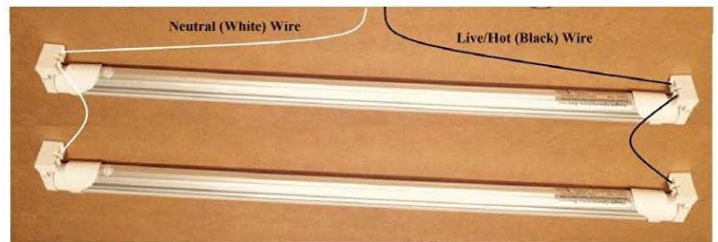


Basic Connection with 110VAC

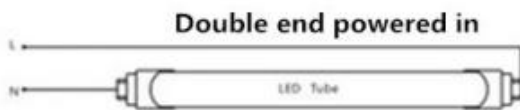
- ❑ Bypass any electronic ballast & starter first, then directly connect the hot wire to one end of the LED light and the neutral wire to the other end!
- ❑ It DOESN'T MATTER which end is neutral or hot. You can connect the hot (Black) Wire from the AC power to one end and the neutral (White) wire to the other end.
- ❑ It DOESN'T MATTER if the lamp holders in your fixture are shunted or non-shunted type so that you don't need to change them.
- ❑ Multiple LED tube lights must be electrically connected in a parallel way. Serial connections won't work.
- ❑ Please take off the plastic caps for pin protection on both sides (if there are any) before plugging in the LED light!

Installation Steps

1. Open the metal cover of your light fixture and find the hidden ballast. Cut off all the wires of the ballast from both the 110V AC power cord and the lamp holders of your light fixture. You can just by-pass the ballast or take it off and throw it away.
 2. Leave the ground (Green one if there is any) wire from the 110VAC power cord where it is, but connect the hot (BLACK) & neutral (WHITE) wires from the 110VAC power cord directly to the lamp holders on both sides of the light fixture, with the hot going to one side and the neutral going to the other side. To achieve this, the hot and neutral wires need to be extended by connecting extending wires to them using twist-on wire connectors, and then the two extending wires with a pre-cut metal tip should be inserted into the lamp holders on each side of the light fixture.
 3. If multiple lamp holders can be found on each side of your light fixture and you need to install multiple LED lights accordingly, please use electrical wires to connect these lamp holders on each side so that they are electrically connected with each other. Please use wires with two pre-cut metal tips to achieve this connection. By this way, once the AC power is injected into one lamp holder, it goes to the others so that all the LED lights can work in a parallel way.
 4. Screw the LED tube light into the lamp holders on both sides. It is all set!!
- *Tip: You don't need to buy anything for this installation!! You can get all the wires by just cutting them from the ballast. Use the existing twist-on wire connectors for any necessary wire to wire connections.



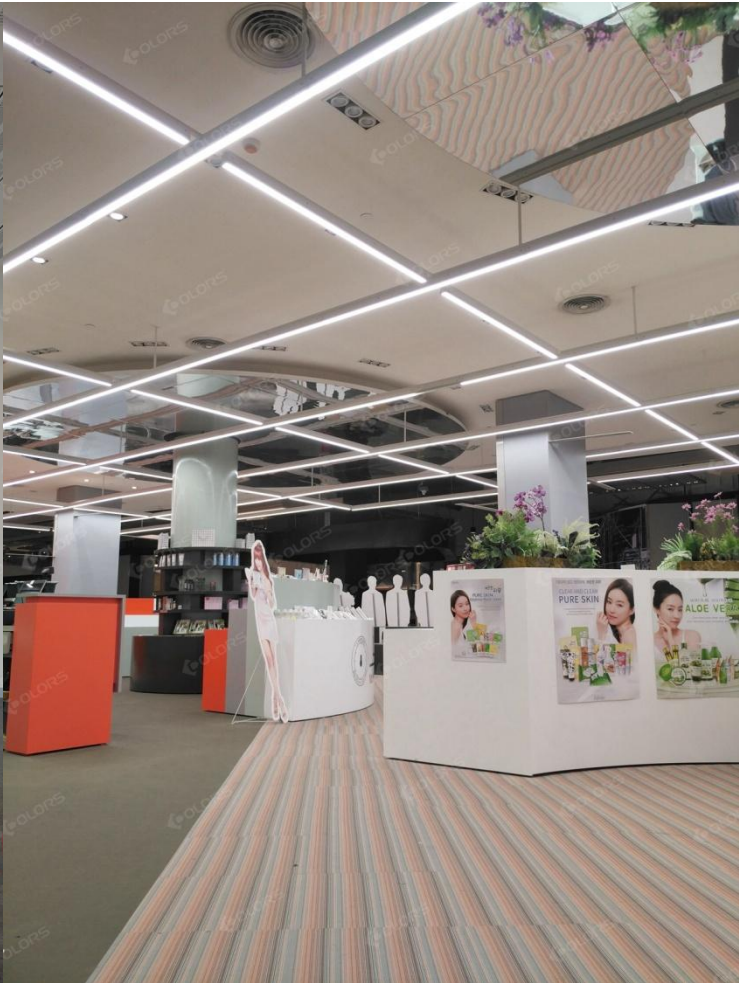
Connection Sample: Two LED lights connected in a parallel way



CCT Performance



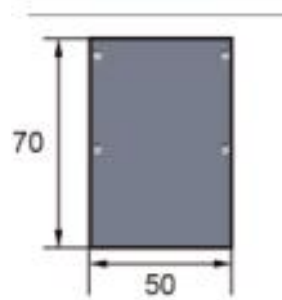
LED LINEAR LIGHTING SYSTEMS



ONE-SIDE SHINING LED LINEAR LIGHT SYSTEM

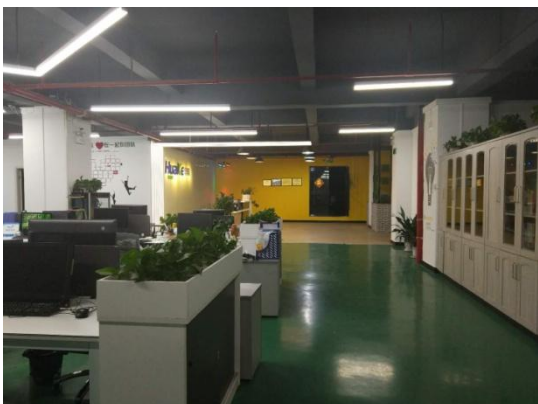
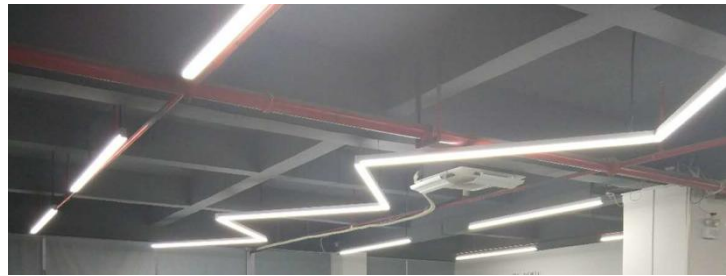
FEATURES

- * One side emitting
- * 100-277V AC
- * 100 LM/W
- * 80W/Meter
- * 80+ CRI
- * Length: can be customized in 300cm
- * Powered by high quality SMD LED
- * CCT: 3000K/4000K/5000K/6000K
- * Aluminum + PC
- * IP44 Protection Grade
- * Non-dimming/0-10V dimming
- * Suspension Hardware included
- * 5 years warranty
- * CE, ROHS, approved



APPLICATIONS

Ideal for both aisle and general lighting in supermarkets, retail stores, libraries or similar environments.



GENERAL

Serial Part #	LLL5075
Color Temperature(CCT)	3000K / 4000K / 6000K
Power Consumption(W)	80W/Meter
Input Voltage	100-277 V AC
Light Source	SMD 5730
Lumen Efficiency	100LM/W
CRI (Ra)	>80
Material	Aluminum + Plastic
Dimension W*H	50x70 (mm)

HIGH POWER LED LAMP



FEATURES

- * Rated for Dry and Damp Location
- * Painted Black Steel Body
- * Philips LM80 SMD3030 LED Light Source
- * Pendant Chain Mounting/Hook/Pipe Mounting
- * Hardwired type, pre-wiring with 30cm long lead wire



APPLICATIONS

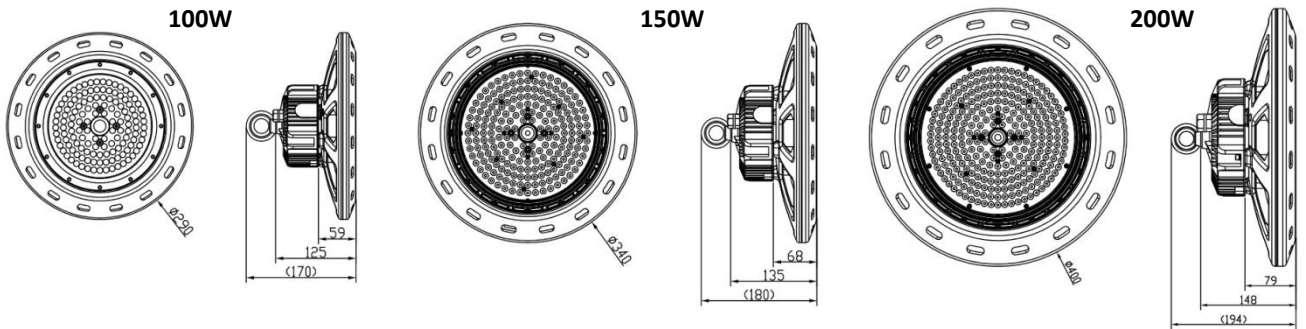
Used for Indoor/Outdoor Highbay, Warehouse, Supermarket, Garage, Parking Lot, and any general lighting

MODELS

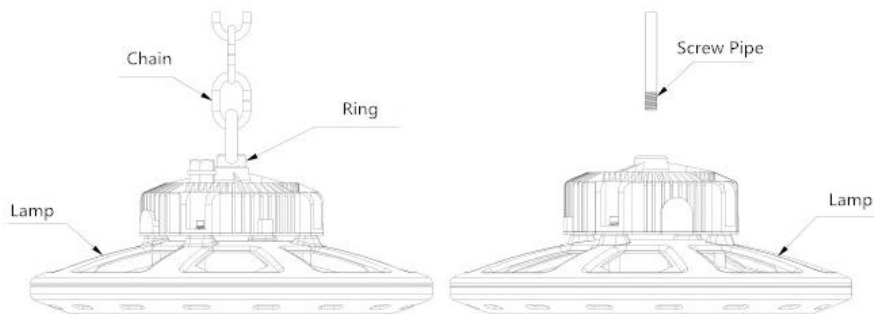
3 Years Warranty CE approved driver used									
Product Name	SKU	Input Voltage	Power	Efficiency	CRI>80	Color	IP Grade	Beam Angle	Dimming
100W UFO LED High Bay Light	HK-UFOHB-100WPW-3Y	85-265VAC	100W	>85LM/W	CRI>80	6000K-6500K	IP65	60° /90° /120°	NO
150W UFO LED High Bay Light	HK-UFOHB-150WPW-3Y	85-265VAC	150W	>85LM/W	CRI>80	6000K-6500K	IP65	60° /90° /120°	NO
200W UFO LED High Bay Light	HK-UFOHB-200WPW-3Y	85-265VAC	200W	>85LM/W	CRI>80	6000K-6500K	IP65	60° /90° /120°	NO

5 Years Warranty CE approved driver used									
Product Name	SKU	Input Voltage	Power	Efficiency	CRI>80	Color	IP Grade	Beam Angle	Dimming
100W UFO LED High Bay Light	HK-UFOHB-100WPW-5Y	85-265VAC	100W	>85LM/W	CRI>80	6000K-6500K	IP65	60° /90° /120°	NO
150W UFO LED High Bay Light	HK-UFOHB-150WPW-5Y	85-265VAC	150W	>85LM/W	CRI>80	6000K-6500K	IP65	60° /90° /120°	NO
200W UFO LED High Bay Light	HK-UFOHB-200WPW-5Y	85-265VAC	200W	>85LM/W	CRI>80	6000K-6500K	IP65	60° /90° /120°	NO

DIMENSION



INSTALLATION

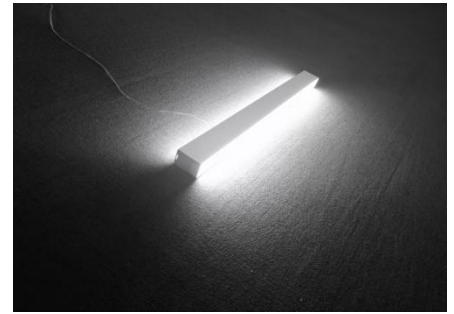
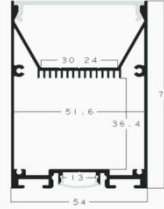


DUAL SIDE SHINING LED LINEAR LIGHT SYSTEM

FEATURES

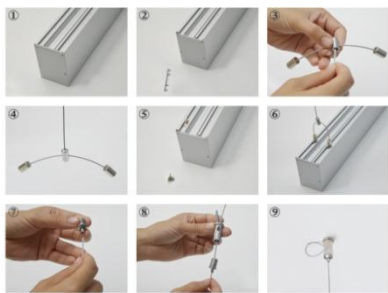
- * Up & Down dual-side emitting
- * 100-277V AC
- * 100 LM/W
- * 100W/Meter
- * 80+ CRI
- * Length: can be customized in 300cm
- * Powered by high quality SMD LED
- * CCT: 3000K/4000K/5000K/6000K
- * Aluminum + PC
- * IP44 Protection Grade
- * Non-dimming/0-10V dimming
- * Suspension Hardware included
- * Several pieces linkable by joint metal piece
- * 5 years warranty
- * CE, ROHS, approved

Aluminum Alloy Lamp Shade
Joint, mm tolerance: ±0.2mm



APPLICATIONS

Ideal for both aisle and general lighting in supermarkets, retail stores, libraries or similar environments.



GENERAL

Color Temperature(CCT)	3000K / 4000K / 6000K
Power Consumption(W)	100W/Meter
Input Voltage	100-277 V AC
Light Source	SMD 5730
Lumen Efficiency	100LM/W
CRI (Ra)	>80
Material	Aluminum + Plastic
Dimension W*H	54x75 (mm)

2022 Catalog



SHENZHEN HUAKE LIGHT ELECTRONICS CO., LTD.

5F/1#, ChaXi SanWei Industrial Zone, GuShu, XiXiang, BaoAn,
ShenZhen, GuangDong, 518126, China.

Tel/Wechat/WhatsApp: +86 133 0196 0992

E-mail: info@ledlightsworld.com

Web Site: www.ledlightsworld.com/ www.ledlightdiplay.com