

此页不印刷（本文件共24页）

SIZE:140mm X 200mm

材质: 封面250g铜版纸 内页: 书纸

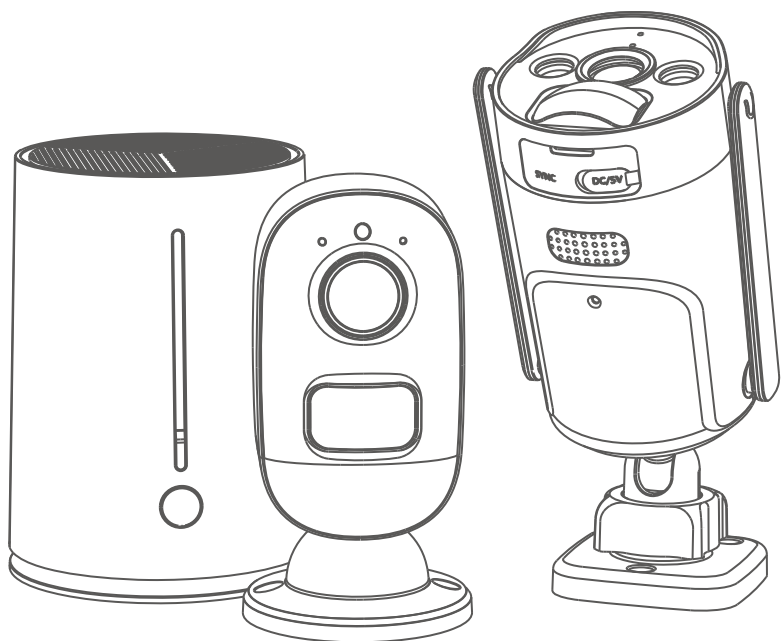
工艺: 封面过亚膜



PANTONE Black C

注意：不要随便删减空白页（特别是封面内页不能出现印刷内容）

Battery Camera Kits



User Manual

Menu

Product Overview	1
Camera can be connected to solar panel	7
Add the Camera Kits In the APP	10
1.Download the APP	10
2.Register	11
3.Power On the Camera	11
4.Connect the Base Station to local Network	12
5.Add the camera in the APP	13
6.Add a new Camera to the Base Station	13
APP Function	16
1.Home Page	16
2.Preview	17
3.Playback	18
4.Setup	19
FAQs	20

If you have any questions or problems

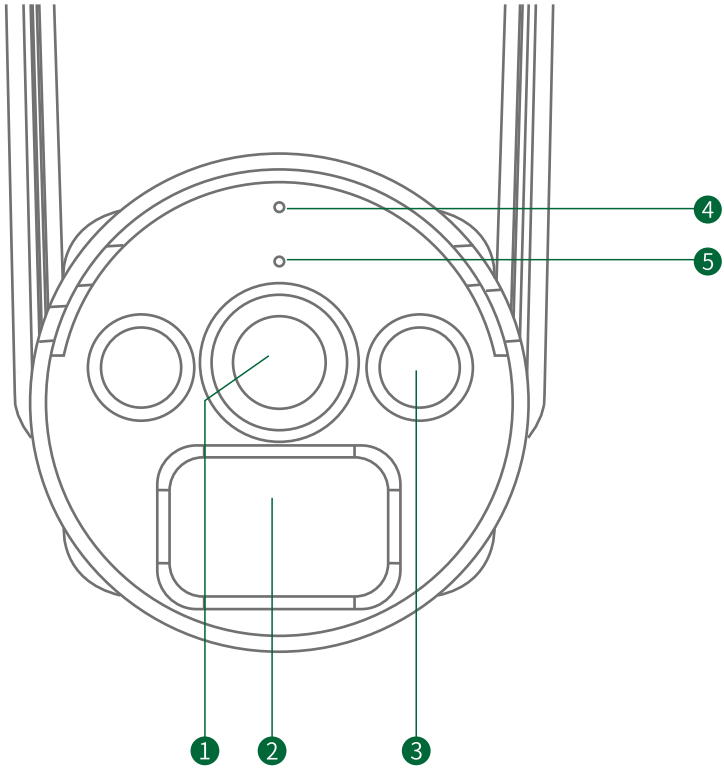
Please contact us by

SC@yooomail.com

We will offer prompt and authoritative reply within 24 hours and try our best to resolve your problem ASAP.

Product Overview

Camera:



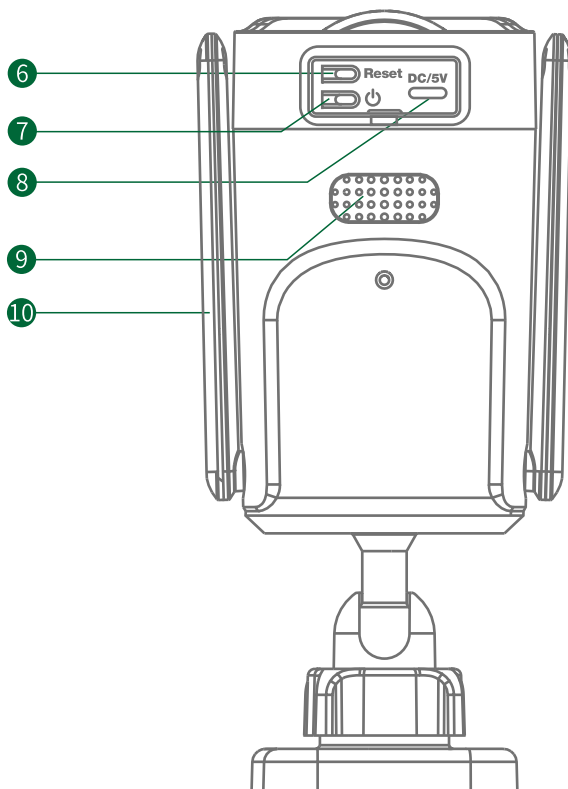
1.Lens

2.PIR Sensor

3.LED

4.Indicator

5.Microphone



6: Reset Key

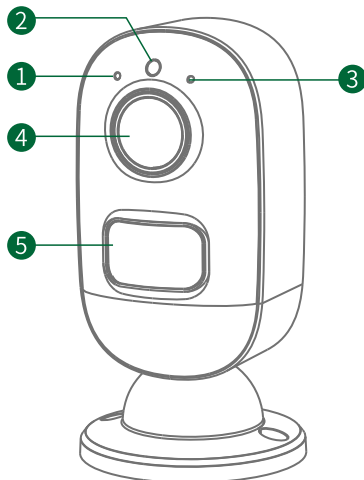
7: Power Key

8: TYPE C port

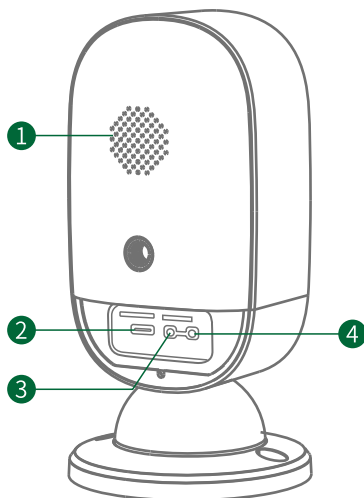
9: Speaker

10: Antenna

- 1.Microphone
- 2.Photodiode
- 3.Indicator
- 4.Lens
- 5.PIR

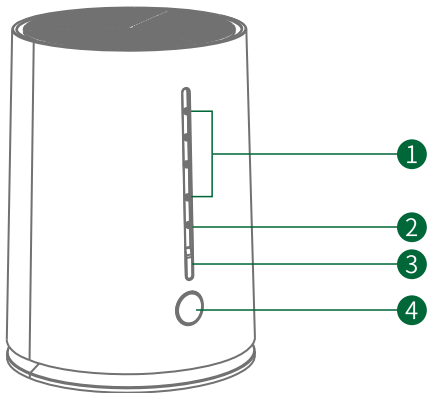


- 1.Speaker
- 2.DC5V TYPE-C Port
- 3.Power Key
- 4.Reset Key

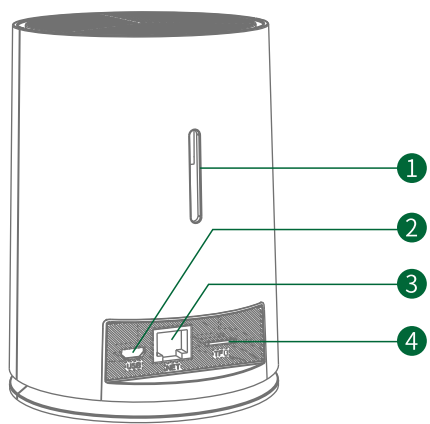


Power Key	Hold down for 3 seconds to Power on, and hold down for 3 seconds to Power off
Reset Key	Hold down the Key for 5 seconds to Reset the device

Base Station:



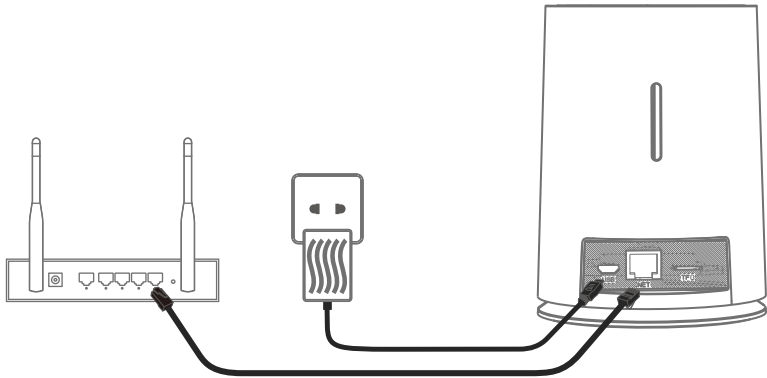
- 1.IPC Indicator
- 2.Net Indicator
- 3.Reset
- 4.Sync



- 1.Speaker
- 2.DC5V USB Port
- 3.Net
- 4.Micro SD

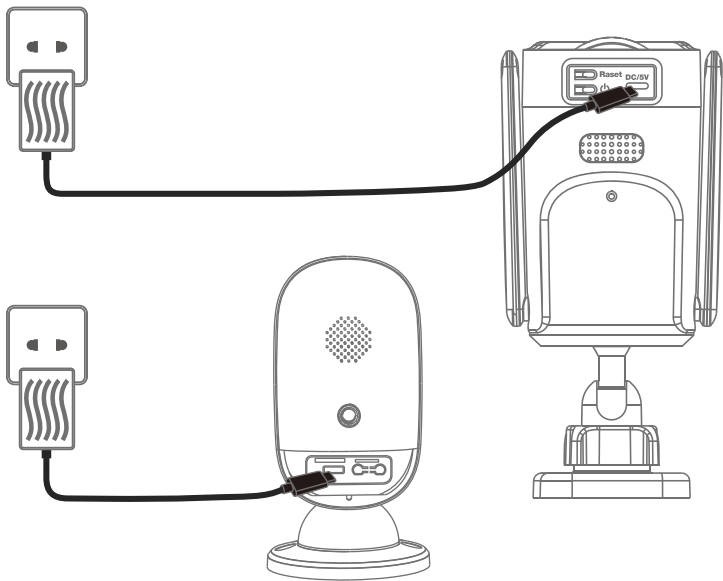
Net	Connect the base station to the Internet
Reset	Long press 5 seconds to simple reset (not clear the camera channel), continue to press and hold for more than 10 seconds to all reset (use with caution)
Micro SD	Micro SD card interface, supports up to 128G
Sync	Code matching button, long press for 3 seconds to enter the code matching state
Net Indicator	<p>Always on: The network connection is smooth, the device ID is online and can be viewed remotely.</p> <p>Slow flashing: Network connection error</p> <p>Fast flashing: Network connection is not connected</p>
IPC Indicator	<p>Always on: The camera is connected to the base station normally</p> <p>Slow flashing: Abnormal connection between camera and base station</p> <p>Fast flashing: The base station has entered the code matching mode</p> <p>No light: Camera is not added</p>
DC5V USB Port	DC power input 5V

Installation :



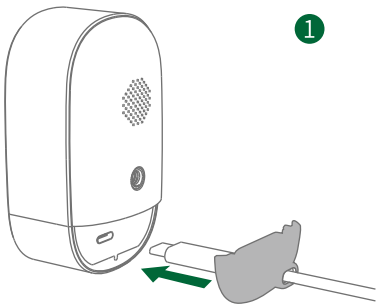
Notice:

The Base Station needs to be powered with the included power adapter constantly.

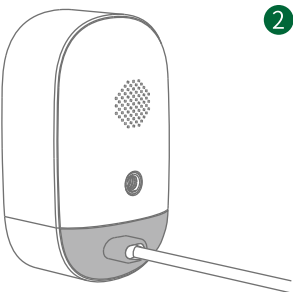


Please charge the Battery Camera with the included power adapter for at least 4 hours.

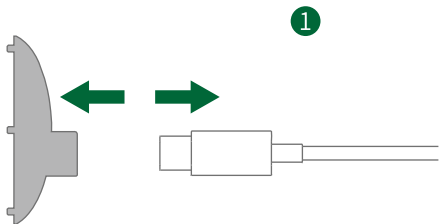
Camera can be connected to solar panel



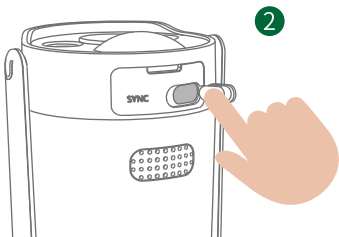
Insert the TYPE-C cable



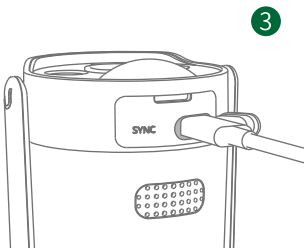
Install the rubber stopper



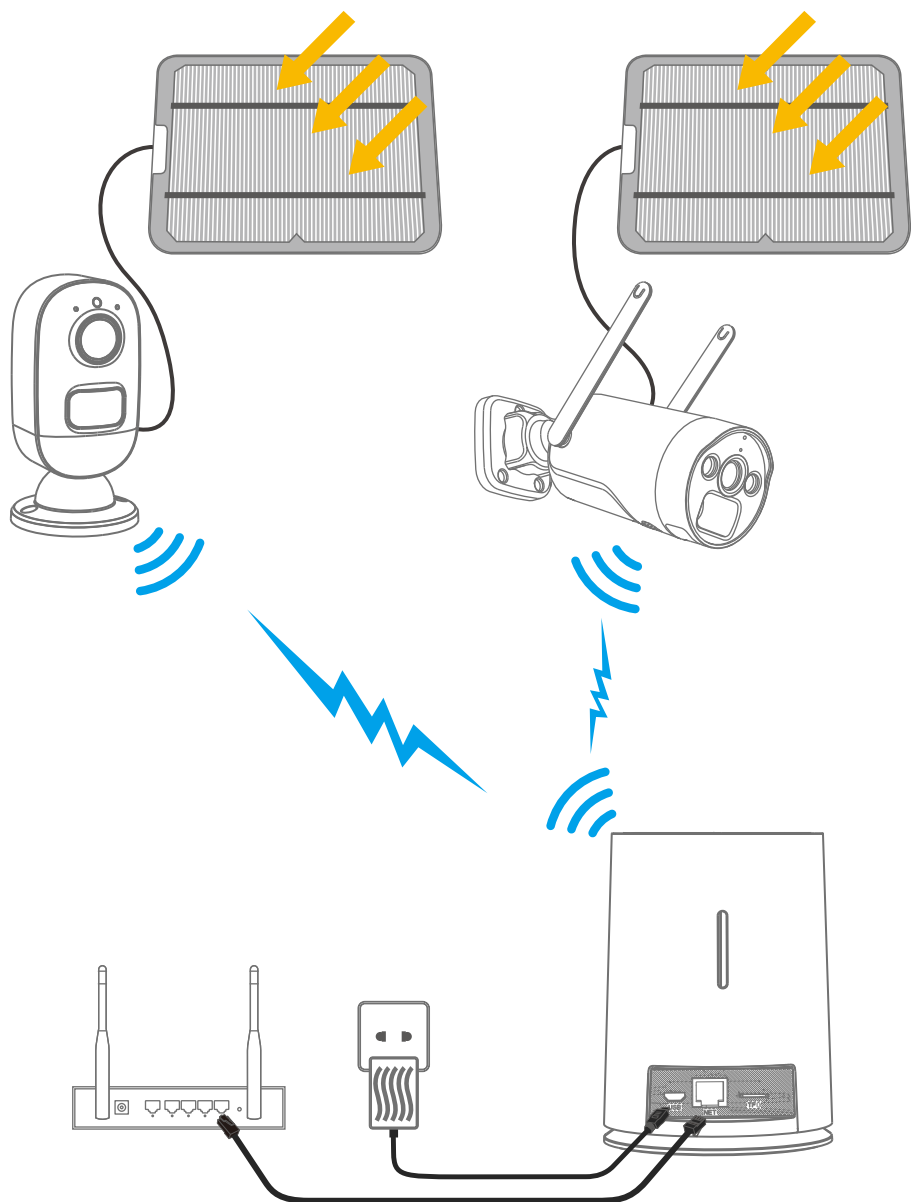
Remove the rubber stopper



Pull out the rubber stopper



Insert the TYPE-C cable



Notice:

To ensure the system's best performance and normal function, please pay attention to the following content:

1. Do not install the camera near a heat source.
2. Please make sure there is no reflecting object within 5 feet(1.5meters)range in front of the PIR sensor, otherwise the PIR might be interfered.
3. Try to avoid installing the camera on the busy roadside, frequent pedestrians and vehicles will wake up the camera frequently, resulting in frequent alarm messages and extremely fast power consumption.
4. Do not install the camera too far away from the router. The product needs a good Wi-Fi signal strength to work properly.

Add the Camera Kits In the APP

1.Download the APP

Scan the corresponding QR code for your phone, or search “CloudEye” in App Store or Google Play Store to get download and install the APP.



IOS



Android

NOTICE:

To ensure the APP's normal function, please allow the Notification/Location permission on your smartphone.

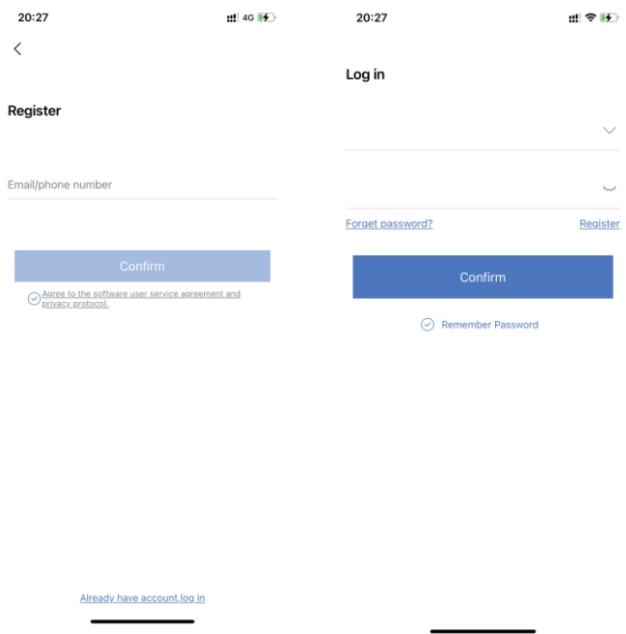
2.Register

Launch the APP CloudEye, and register with your Email address.

Notice:

Please use a available Email address.

Choose the right country code.



3.Power On the Camera and the Base Station

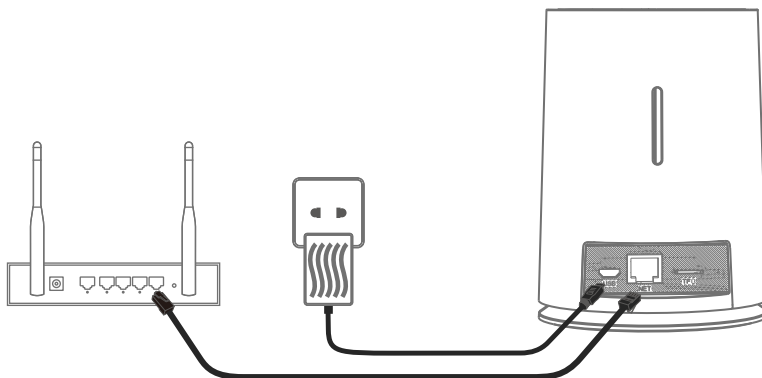
Power on the camera, and power the Base Station with the included power adapter, the Base Station will power on automatically.

NOTICE:

Please charge the Battery Camera with the included power adapter for at least 4 hours.

4.Connect the Base Station to local Network

Power on the Base Station and connect the Base Station to your router with the included Ethernet cable.

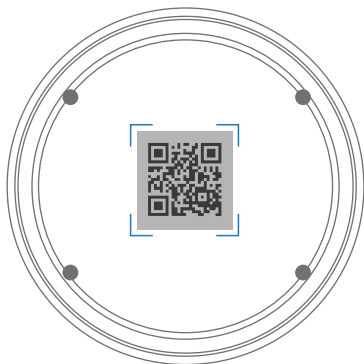
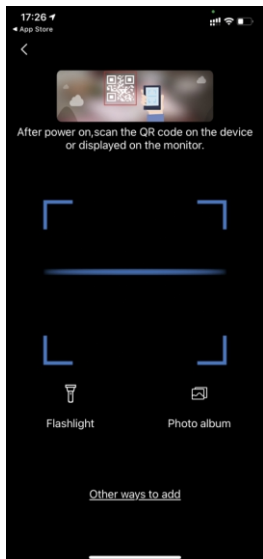


Notice:

Please make sure your router is using DHCP (Dynamic Host Configuration Protocol) for internet configuration, The Base Station only support DHCP. If your router is using static IP address, please visit our official website : <https://www.toguard.cc> and download the manual document for adjusting static IP address.

5.Add the Base Station in the APP

Make sure the Base Station is properly connected to the router, then launch the CloudEye APP, Click the “+” icon to add devices. Scan the QR code on the Base Station to add the devices.

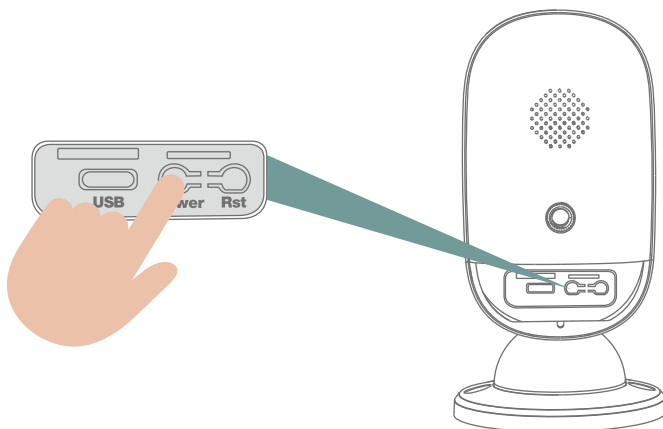
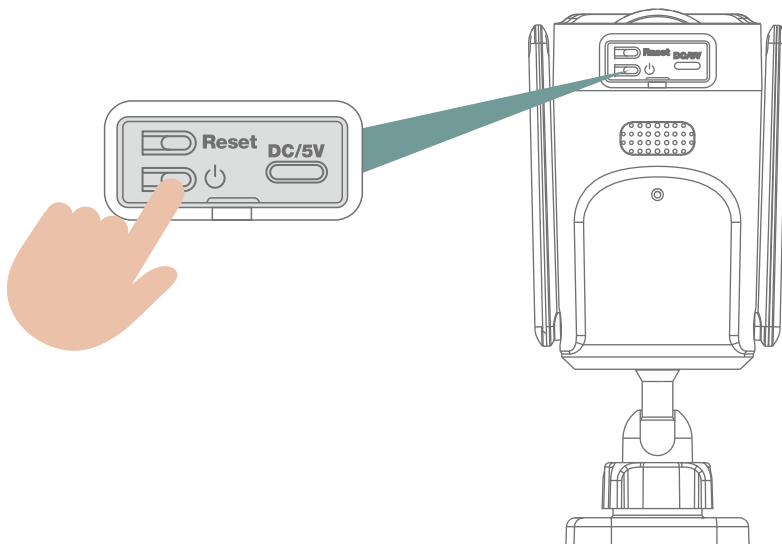



Warm Tip: The base station and camera of this system have been programmed before shipped. You only need to complete the above steps and scan the QR code of the base station to add the device to view the camera screen . If you need to add a new camera or re-add a camera, please see the operation method below.

6.Add a New Camera to the Base Station

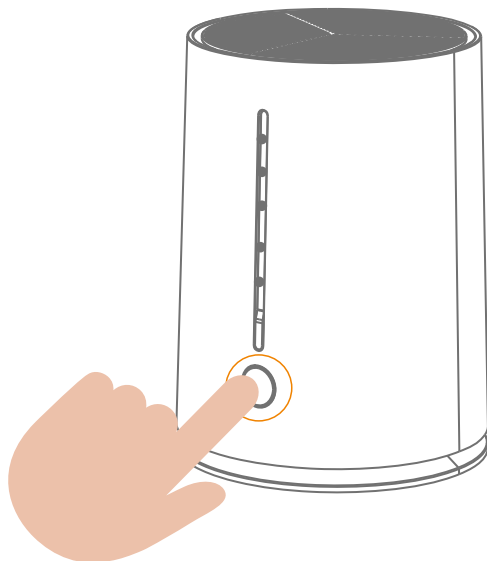
The Base station can connect up to 4 cameras, please follow these steps to add a new camera to the Base Station.

(If you want to reset the original camera in the kits, please follow these steps to add the camera again)



1. Press and hold  for 3 seconds to turn off the device, and another press and hold for 3 seconds to turn on the device;
2. Press and hold "Reset" for more than five seconds to Reset the device;

3. Press and hold the “Sync” button on the Base Station for 5 seconds to start matching code. The Base Station prompt ”Matching code will be done once you heard the voice prompt”



4. Within 1 minutes, the Camera prompt “Matching Code Succeed” and the Base Station prompt “WiFi Matching Succeed”

5. The camera is successfully added to the Base Station, you can change the configuration in the CloudEye APP.

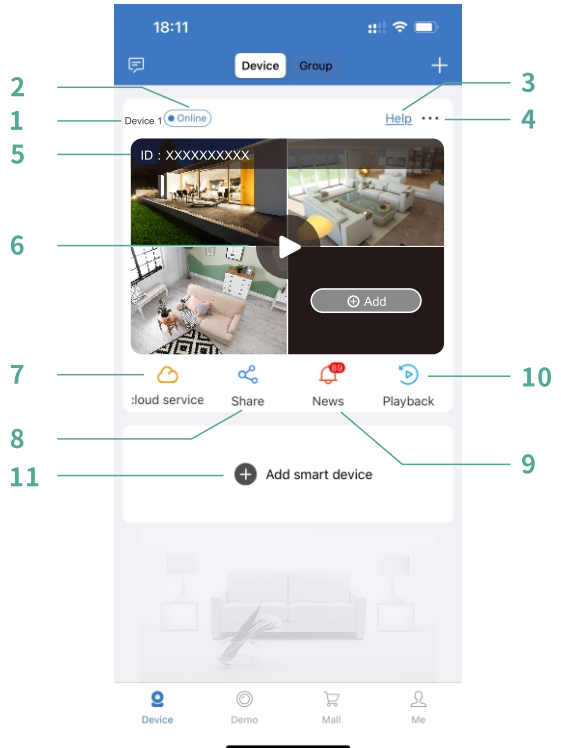
Notice:

If the Base Station The new device is not found, Try again.

APP Function

Home Page

1. Device name
2. Device status
3. Contact Customer Service
4. Edit device
5. ID information
6. Play button
7. Cloud service
8. Share Device
9. Alarm notification
10. Playback
11. Add new device



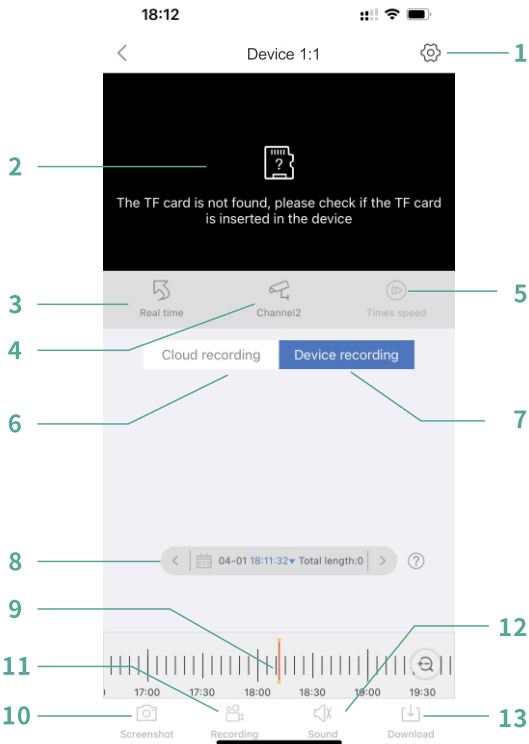
Preview

- 1.Time
- 2.Camera name
- 3.Battery level
- 4.Signal strength
- 5.Playback
- 6.Windows
- 7.Definition (SD/HD)
- 8.Alarm
- 9.Light control (full color mode requires camera support)
- 10.Microphone
- 11.PTZ Control
- 12.Screenshot (Camera support required)
- 13.Turn on/off the camera sound
- 14.Recording



Playback

- 1.Camera Setup
- 2.Playback Window
- 3.Back to Real Time View
- 4.Channel Switch
- 5.Playback Speed
- 6.Cloud playback
(requires activation)
- 7.Local playback
- 8.Playback time selection
- 9.Playback timeline
- 10.Screenshot
- 11.Recording
- 12.Turn on/off sound
- 13.Download Video



Setup



Device Name	Edit Device Name
Device Model	Default Model
Software Version	/
Electricity	Power Status
Signal	Signal Strength
Cloud Storage	Cloud Service Status
Device Signal Detection	Manual Check Signal Strength
Firmware Upgrade	Check For Firmware Update
Operate Mode	
Alarm Setting	

FAQs

1. If the phone receives alarm messages too frequently, the camera will consume battery power greatly. It is recommended to lower the motion detection sensitivity, set the alarm interval, and start the alarm plan.
2. If you find that there are no moving objects in the alarm picture that the phone frequently receives, it may be that there is a sensitive heat source in the motion detection range, which causes the PIR to be triggered by mistake. It is recommended to lower the motion detection sensitivity.
3. If you detect that someone is passing by the camera but cannot receive the alarm message, it is recommended to increase the motion detection sensitivity.
4. If you find that the alarm picture or video is delayed, or you can only see the back of people, it is recommended to increase the motion detection sensitivity.
5. The PIR sensor will be disturbed by the ambient temperature. It is recommended to increase the motion detection sensitivity in a hot environment, and decrease the motion detection sensitivity in a cold environment. At the same time, when the temperature is extremely low, heavy clothes will hinder PIR sensor detection.
6. The ultraviolet rays of the sun will interfere with the PIR sensor. When the PIR of the camera is directly facing the strong sun, there is a probability that the alarm will not be sensitive.

The device prompts offline?

- 1) Check whether the equipment is in the power-on state, and observe whether the working light of the equipment is on normally.
- 2) Check whether the WIFI network is in good condition and restart the router.
- 3) If the device is located far away from the router, which results in the inability to obtain a good WIFI signal, it is recommended to move the router to a closer place or add a WIFI amplifier to improve the WIFI performance of the home.
- 4) Delete the floodlight camera from your CloudEye account and add it again after resetting the device.
- 5) Check whether the device firmware and application program are the latest version.

Update router or WIFI password?

Delete the camera from your CloudEye account. After resetting the device, use the new WIFI or password to add it again.

Alarm push frequently?

1. In the app, lower the sensitivity of the motion detection alarm.
2. Check whether there are objects that interfere with and trigger the PIR sensor in the field of view of the equipment, such as the outdoor unit of the air conditioner, driving cars, passing pedestrians, etc. The angle of the device can be adjusted appropriately to avoid these easily disturbing objects

The phone cannot receive the alarm push?

1. Set in the mobile phone system and enable the push permission of the "CloudEye" application.
2. Make sure the device's motion detection function is successfully turned on.
3. Restart the phone, and the Android phone tries to clear the cache.
4. Check whether the network is good.

