



# TRIAXTONE

NATURE'S FOOTPRINT FROM THE PAST WITH DESIGNS FOR THE FUTURE

# *Content*

01

ABOUT US



02

INSPIRATION FROM NATURE



03

COLOR PALETTE



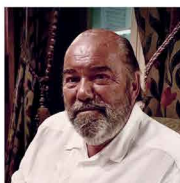
04

MAIN PRODUCT



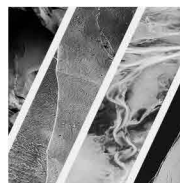
05

CHIEF DESIGNER



06

OUR TECHNOLOGY



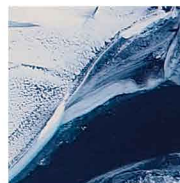
07

BESPOKE



08

CONTACT US



TriaXtone was founded by Apexstone Amoy Marble and Granite.

A company that was established in the stone industry 17 years ago, supplying stone products to 42 countries world wide.

A team of artisans, working with and along side a British master designer, Phillip Dutton White to create beautiful household artworks with a commitment to fabrication, quality, design and luxury.

The collection from TriaXtone bring “whispers millions of years old from Mother Earth”.



## INSPIRATION FROM NATURE

02

Stone, nature's creation has been forged by millions of years of earth movement and geological sedimentation. The force of time, inscribed deeply in all parts of its evolution. Microstructures containing colorful decoration, mineral pigments, sparkling crystals and fossilized shell fish are imprints and shadows that make each piece totally unique.

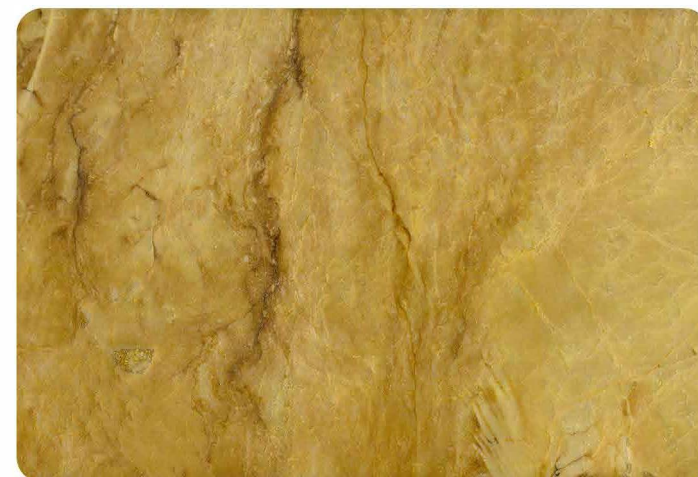
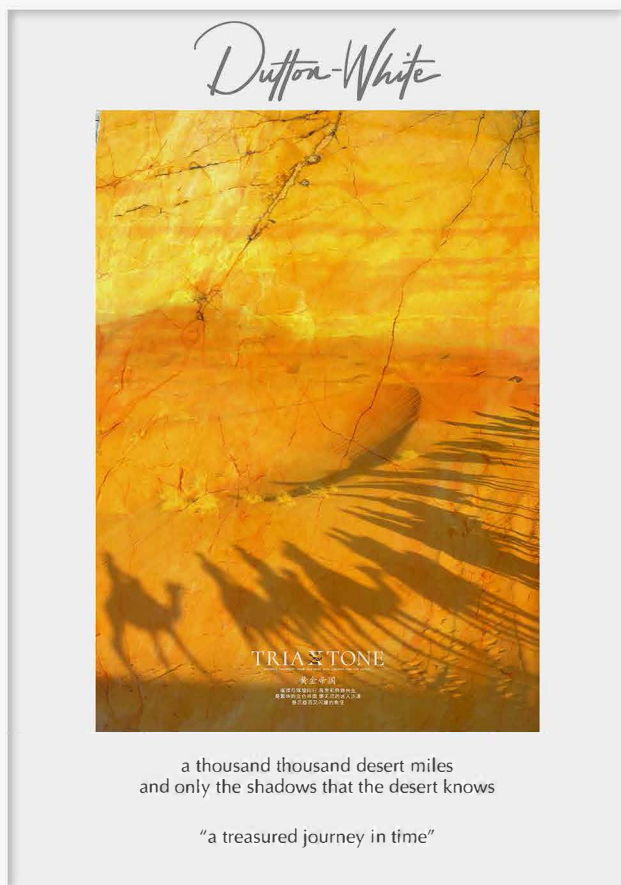
As early as the “Stone Age” our ancestors were shaping this material to help them live, “tools for survival”. Then as mankind progressed they carved, shaped and breathed life into this geological marble. Man's creativity, his ideas, his words, his thoughts and love were shaped in stone, leaving us with a recorded history of time and objects of immense beauty.

Triaxtone invite you to feel the artistry, to observe the beauty and elegance with your eyes, to listen to nature's stories with your ears and to explore its legends with your hearts.

The **collection** from TriaXtone brings “Whispers millions of years old from Mother Earth”.







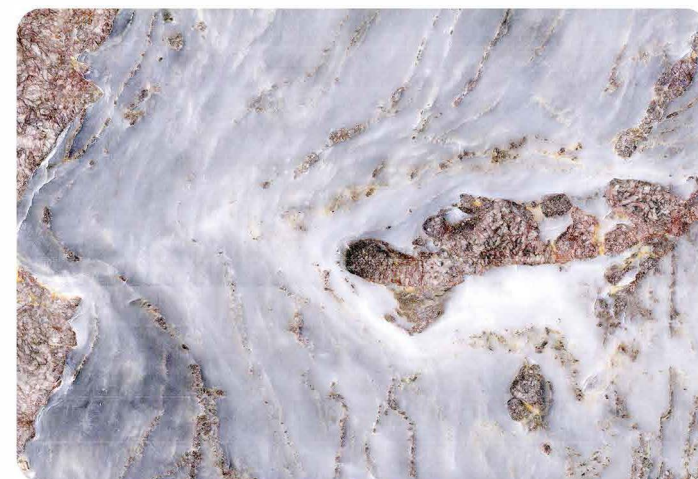
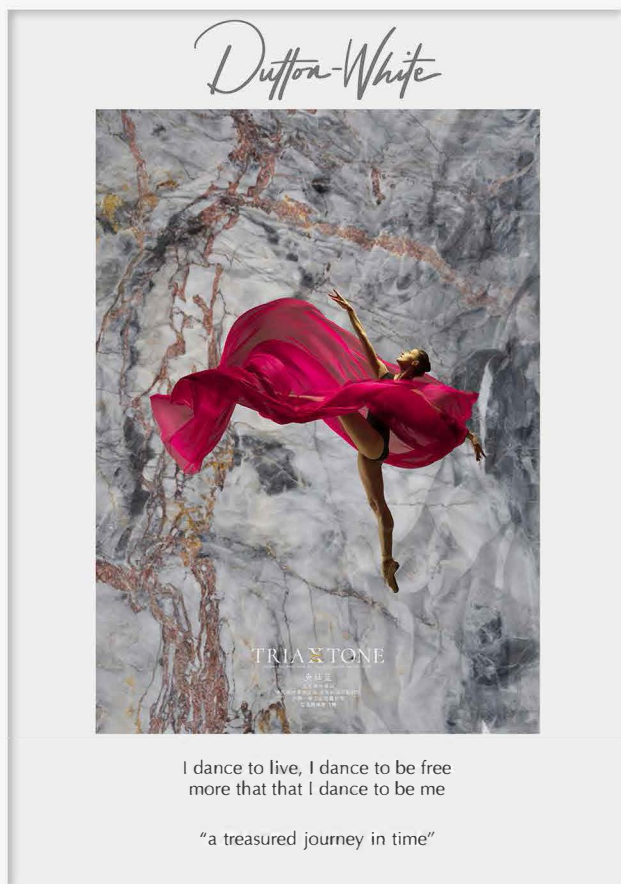
## *Golden Empire Marble*

**Golden Empire Marble** reminds people of the Empire of Alexander the Great.

The yellow background with veins like cracks deliver a feelings of ancient civilizations.

Looking at the marble reminds one of boundless sands, long camel trains and the sound of distant bells.



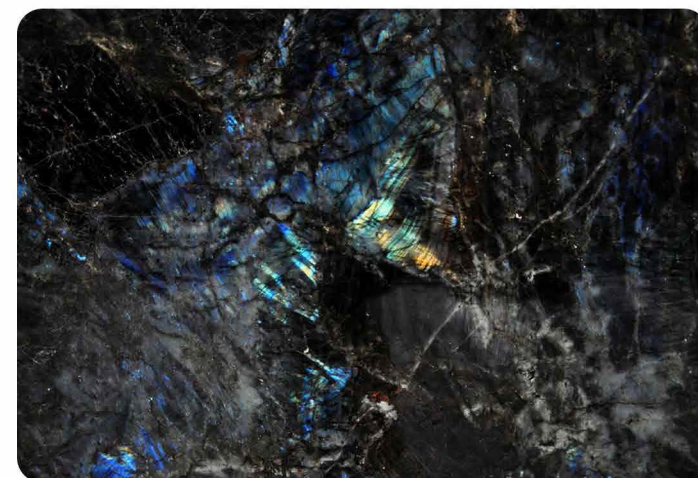
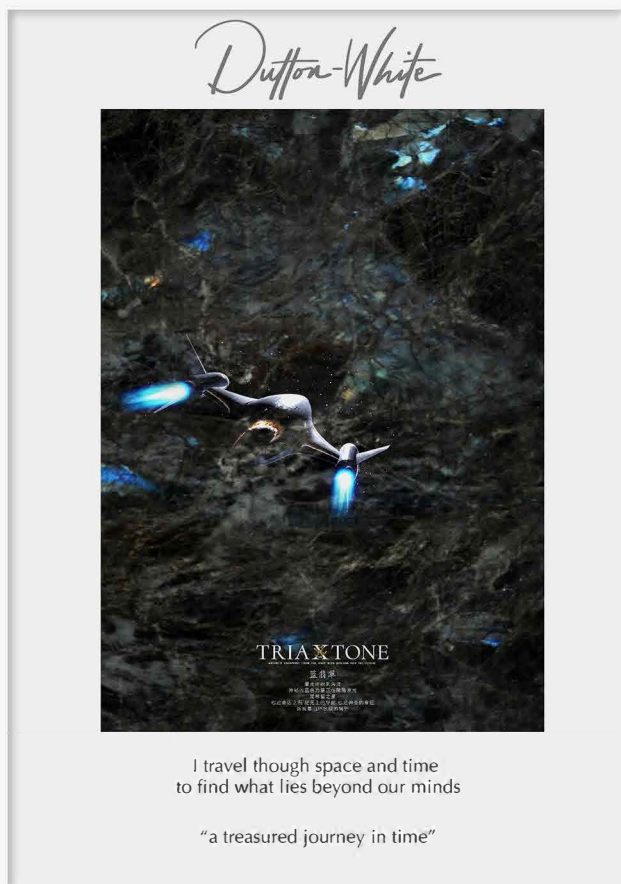


## *Rhapsody Blue Marble*

Nature plays a **Rhapsody in Blue Marble**, veins and lines all dance to the beats, that's the story told by the Mother Earth.

The big patterns are unique, romantic and artistic. Rhapsody Blue Marble - Breathes freedom into your life.





## *Blue Pearl Labradorite*

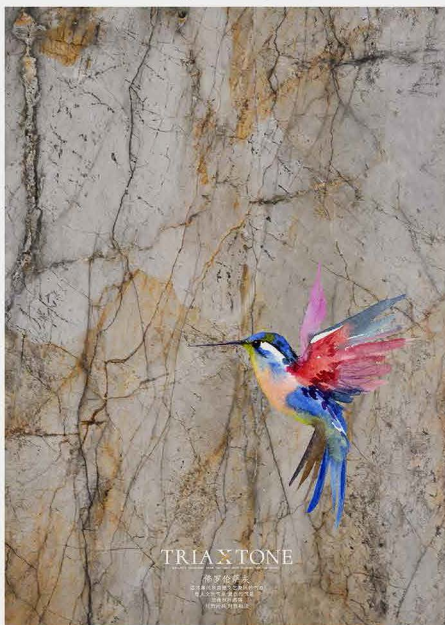
**Blue Pearl Labradorite** is a gemstone with a dark background and shining blue sparkling flakes.

Can be used for jewelry especially bracelets and necklaces.





*Dutton-White*



a flutter a flap of tiny wings  
across the ancient earths cascading carvings

"a treasured journey in time"

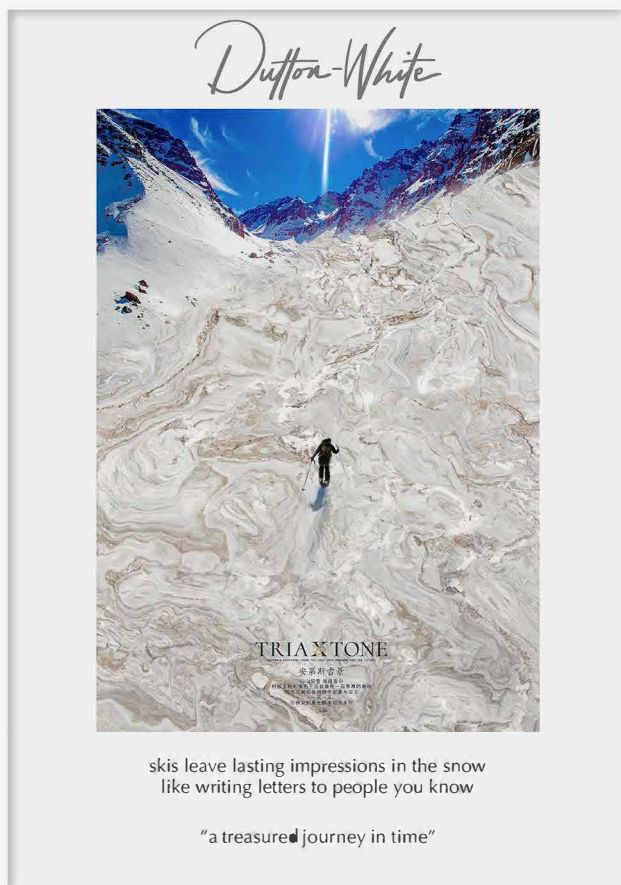


## *Florence Grey Marble*

**Florence Grey Marble** is a beige/grey marble with dynamic veins which reflect the Renaissance style church facades.

Its classical antique look does not stop it from being used within modern interior applications where it gives a feeling of luxury and calmness.





## *Andes Snow Marble*

**Andes Snow** is an off white marble with a landscape look. It is quarried in the Andes mountains of Brazil.

The natural pattern of the marble, that reflect flowing water, attracts lovers of natural stone worldwide.

Used by interior designers to give living areas and wall panels that luxurious exclusive feeling.

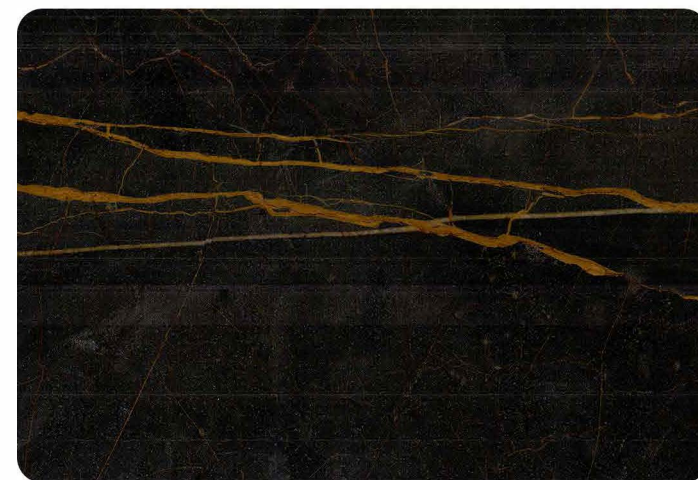




*Dutton-White*



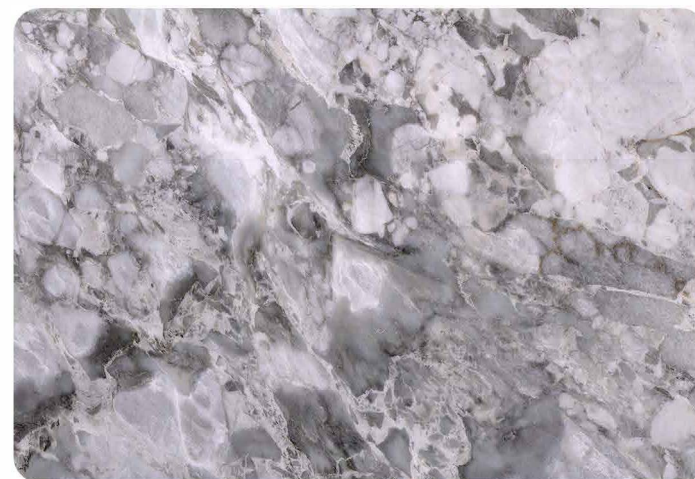
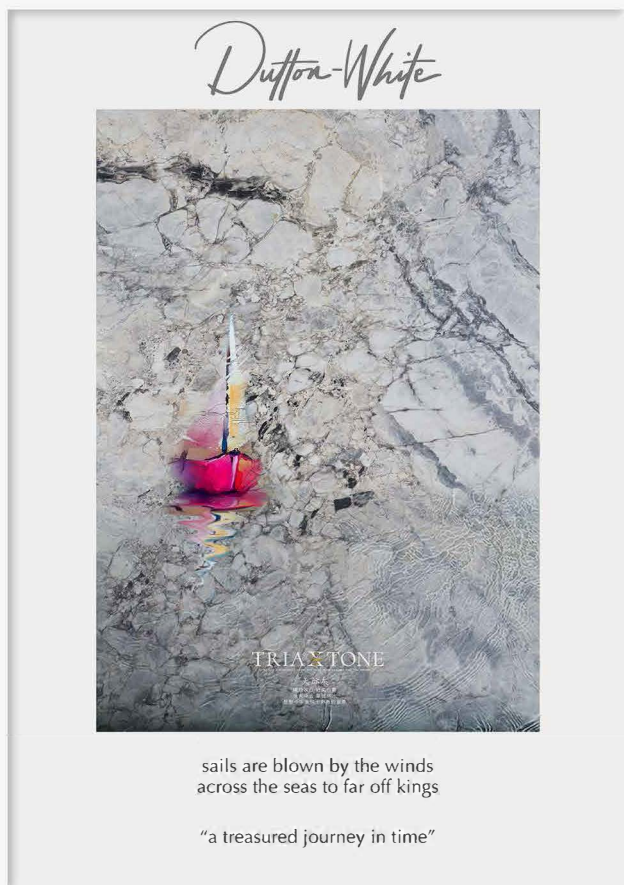
let the thunder overtake you  
as lightning fills the sky  
feel the force of nature overwhelm you and then it liquify  
"a treasured journey in time"



*Shakespeare Flashing Marble*

**Shakespeare Flashing Marble** is a dark brown marble with golden flashing running from top to bottom.



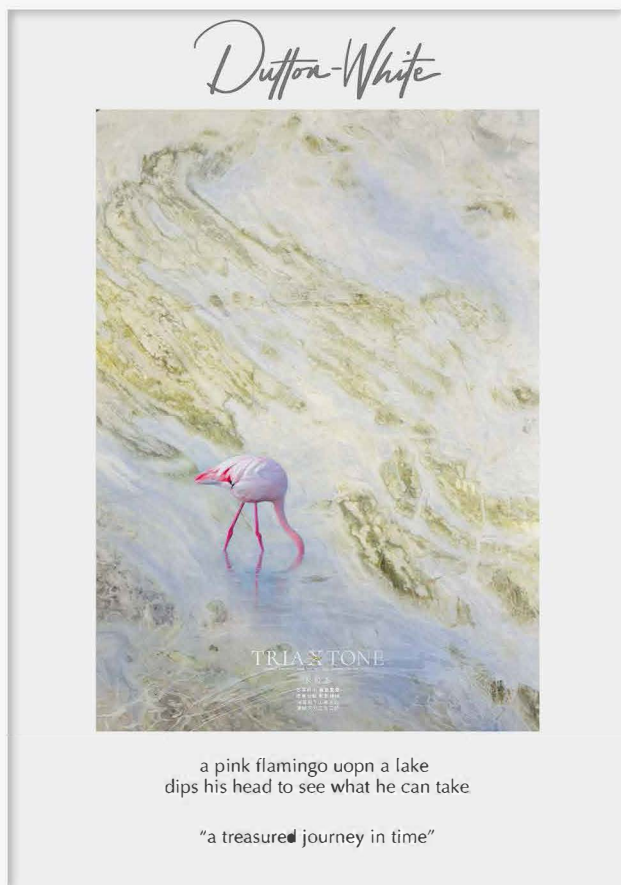


## *Horizon Grey Marble*

**Horizon Grey marble** has dramatic veins cascading over the stone slab.

A symphony in black, grey and white reflecting the color of the clouds upon the sea.





## *Delta Green Marble*

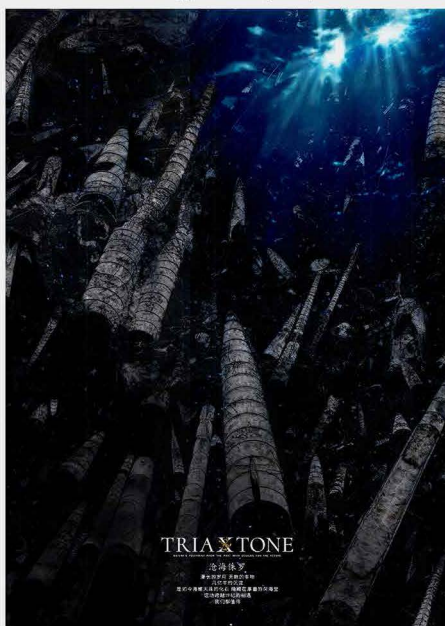
Delta green marble is a mixture of green and blue marble with a neutral grey background.

When cut into a thin slab of less than 5mm it becomes semi transparent.





*Dutton-White*



sea shells cast upon the ocean floor  
have travelled leagues to find out more

“a treasured journey in time”



## *Shell Fossil Marble*

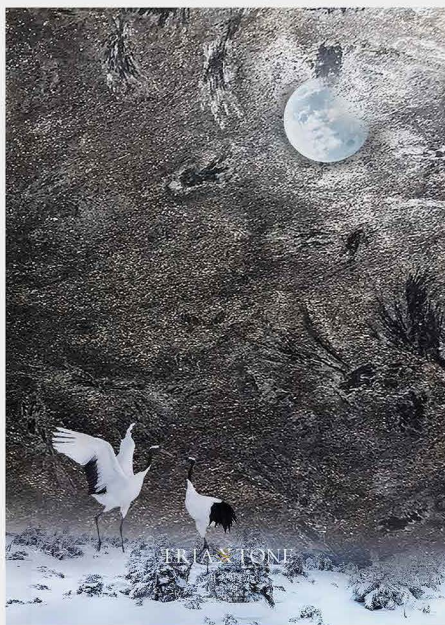
**Shell Fossil Marble** is made up of a deposition of deep-sea shell fossils over hundreds of millions of years.

According to the cutting direction of the blade, the spiral pattern or the axial cone pattern can be obtained from the shell.

When carved into three-dimensional products, complete shells can be seen.



*Dutton-White*



the moon glows within a vast night sky  
whilst the stars they shine as the cranes fly by

"a treasured journey in time"



## *Feather Moon Marble*

**Feather Moon Marble**, background in dark colors, along with Shiny gold crystals and flowers.

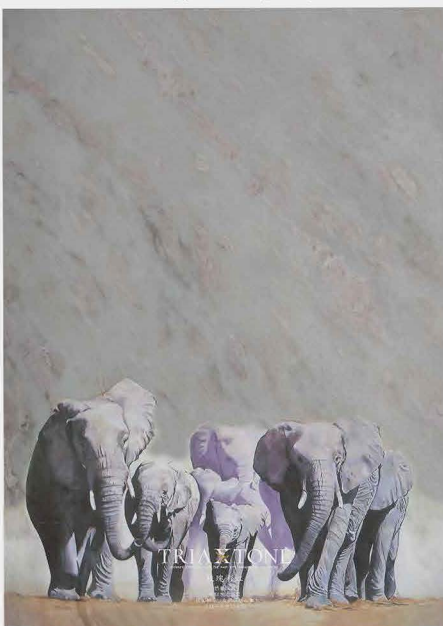
Veins in feather shapes with clear lines lay on the surface, the style is a combination of nobleness and mystery.

Dramatic moments of Mother Earth.





*Dutton-White*



the elephants tramp upon the ground  
leaving footprints and rebounding sounds around

"a treasured journey in time"



## *Sweet Rose Marble*

The first glance you look at this **Sweet Rose Marble**, it leaves an impression of elegance, freshness and delight.

The base color is white with pink, and the veins are like foams and bubbles on the beach.

For girls looking for a feeling of summer, this natural marble is an ideal choice.



## MAIN PRODUCT

04

# Marble Service Tray

### Features

- Stainless natural marble
- 7H scratch-free
- Super light and easy to handle
- Food contact safe sealed

### Specifications

Size: 17 5/8" x 10 1/4" x 2" / 450 x 320 x 50 mm

Weight: 4.3 lbs / 1.95 kgs

Stone: Natural marble Andes Snow

Handles: Hand polished cast brass



## MAIN PRODUCT

04

## Marble Service Tray



### Features

- Stainless natural marble
- 7H scratch-free
- Super light and easy to handle
- Food contact safe sealed

### Specifications

Size: 17 5/8" x 10 1/4" x 2" / 450 x 320 x 20 mm

Weight: 4.3 lbs / 1.95 kgs

Stone: Natural beige marble Florence Grey





MAIN PRODUCT

04

## *Marble Service Tray*



### *Features*

- Stainless natural marble
- 7H scratch-free
- Super light and easy to handle
- Food contact safe sealed

### *Specifications*

Size: 17 5/8" x 10 1/4" x 2" / 450 x 320 x 20 mm

Weight: 4.3 lbs / 1.95 kgs

Stone: Natural white marble Horizon Grey



## MAIN PRODUCT

04

# Marble Service Tray

### Features

- Stainless natural marble
- 7H scratch-free
- Super light and easy to handle
- Food contact safe sealed

### Specifications

Size: 17 5/8" x 10 1/4" x 2" / 450 x 320 x 50 mm

Weight: 4.3 lbs / 1.95 kgs

Stone: Natural white marble Sweet Rose

Handles: Hand polished cast brass





MAIN PRODUCT  
04

## *Marble Service Tray*



## MAIN PRODUCT

O4

# *Marble Service Tray*

## *Features*

- Stainless natural marble
- 7H scratch-free
- Super light and easy to handle
- Food contact safe sealed

## *Specifications*

Size: 17 5/8" x 10 1/4" x 2" / 450 x 320 x 50 mm

Weight: 4.3 lbs / 1.95 kgs

Stone: Natural grey marble Feather Moon

Handles: Hand polished cast brass





## MAIN PRODUCT

04

## Marble Service Tray

### Specifications

Size: 17 5/8" x 10 1/4" x 2" / 450 x 320 x 50 mm

Weight: 4.3 lbs / 1.95 kg

Stone: Natural grey marble Feather Moon

Handles: Hand polished cast brass

### Features

- Stainless natural marble
- 7H scratch-free
- Super light and easy to handle
- Food contact safe sealed



MAIN PRODUCT

04

## *Marble Fruit Plates*



### *Features*

- Super light and easy to handle
- Food contact safe sealed

### *Specifications*

Size of Big Plate: 42×28 cm  
Size of Medium Plate: 37×25 cm  
Size of Small Plate: 29×21 cm  
Weight: 6.8 lbs / 3.1 kgs  
Stone: Natural marble





MAIN PRODUCT

04

## *Marble Fruit Plates*



### *Features*

- Super light and easy to handle
- Food contact safe sealed

### *Specifications*

Size of Big Plate: 42×28 cm  
Size of Medium Plate: 37×25 cm  
Size of Small Plate: 29×21 cm  
Weight: 6.8 lbs / 3.1 kgs  
Stone: Natural marble





MAIN PRODUCT

04

## *Marble Zodiac Coasters*

### *Features*

The twelve signs of the constellations used as decorative features.

### *Specifications*

Size: 10×10×1 cm.

Weight: 0.28 kgs/pc, 3.36 kgs/set

Stone: Natural marble Forest Green





CHIEF DESIGNER

05

## *Phillip Dutton White*

**Phillip Dutton-White** is a Master of the Royal Society of Artists & Designers with over 50 years experience in his craft. His work has taken him over 6 million miles, to all five continents and to virtually every major city in the world.

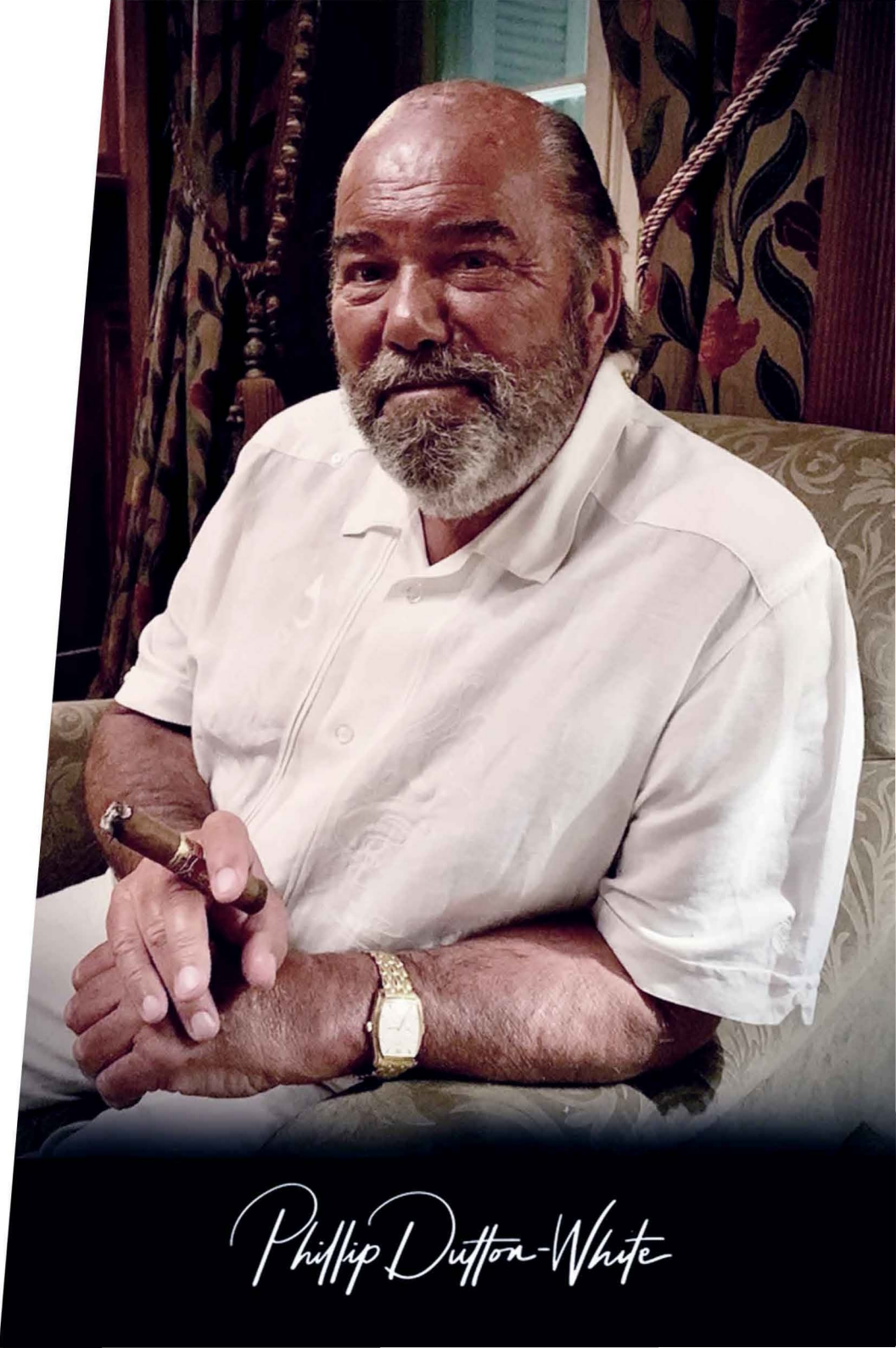
Companies such as Rolls Royce, Bentley, BMW, IBM, JCB, Warner Brothers, Gulfstream Aerospace, Honda cars, Mitsubishi, Raytheon, and hotel groups such as Hyatt, Hilton, Langham and Trithorn Investments plus many more. Private customers, most of them from California and Asia, where he has helped design villas, jet interiors and yachts and of course commissioned paintings to illuminate their walls.

Phillip is proud to be associated with “TriaXtone” and to use his knowledge, design and marketing skills to develop and evolve his works of art into a leading luxury brand.

“Nature's footprint from the past with designs for the future”.

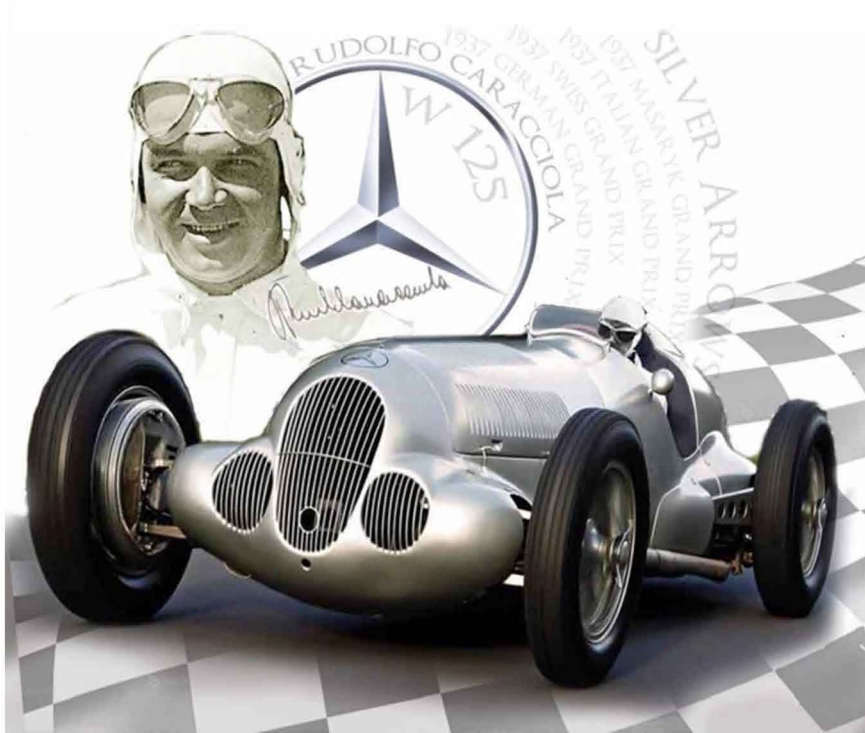
Please visit Phillip Dutton-White's website to learn more of his artworks. <https://duttonwhite.art/>

Follow Phillip Dutton White on [Facebook](https://www.facebook.com/phillip.duttonwhite).  
<https://www.facebook.com/phillip.duttonwhite>



*Phillip Dutton-White*





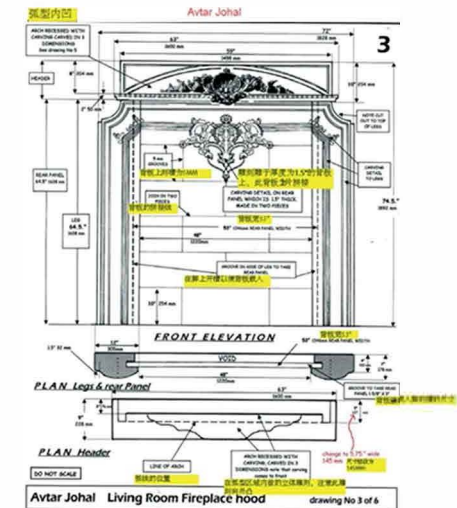
## Concept to reality

My art is all about excellence, capturing the skills, talent, mastery, passion plus the very soul of my subjects on canvas and paper in acrylic, watercolour, oil and graphite.

People and machines which throughout history have achieved and pushed the boundaries in their chosen professions.

- Phillip Dutton White

Artist and designer Phillip Dutton-White has many interests. The range of his creativity is not just racing cars and their heroes, but includes many artistic subjects and titles across the world of art and design.



Phillip will make your dreams come true and custom design it to suit your lifestyle. His talents are not just limited to the range of household and furniture products shown by TriaXtone. His portfolio includes complex and unique designs, for interior and exterior use, within homes of many famous actors, actresses, directors and producers in Hollywood California.





## OUR TECHNOLOGY

06

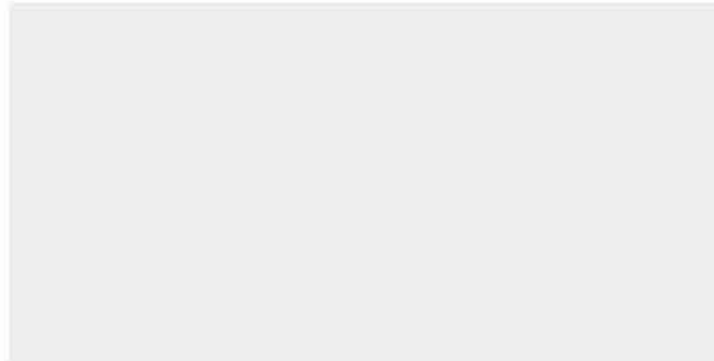
The TraiXtone products are not only for decoration, but have functions for daily use. The characteristics of natural marble are that it can be easily stained, corroded and scratched. We have taken every effort to introduce the **industries-leading technology** within these household products so that you can safely enjoy nature's beautiful textures and formation.

### STAINLESS MARBLE

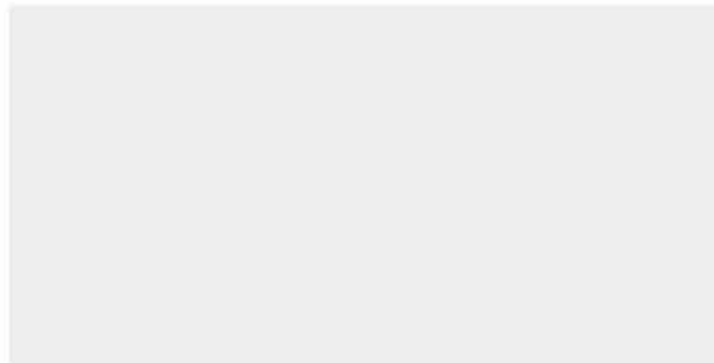
**Stainless marble** stops the surface of the marble from stain or corruption by various liquid contaminants such as tea, cola, wine and lemon juice.

### 7H ANTI-SCRATCH

The surface coated with **7h anti-scratch** has hardness similar to the quartz tops or glass.



A real normal marble sample



A real marble finished with TriaXtone technology

To test both sample, drip with liquid and scratch. You can see the difference that our technology has achieved.

## HYDROPHOBIC/ WATER REPELLENT

The product can be restored or **cleaned by flushing** with water, without grinding or wiping.

### SUPER LIGHT

The marble has been subject and reinforced with materials from the aviation industry, this helps reduce weight and to be in line with ergonomic principles. This **super light** furniture has a long service life within humid conditions such as bathrooms or near the sea or oceans.

### FOOD CONTACT SAFE SEALER

The world's top technology of nano silicon-based material has been applied on our products as a **food safe contact sealer**.



BESPOKE

07

## 2400 VARIETIES OF MATERIALS

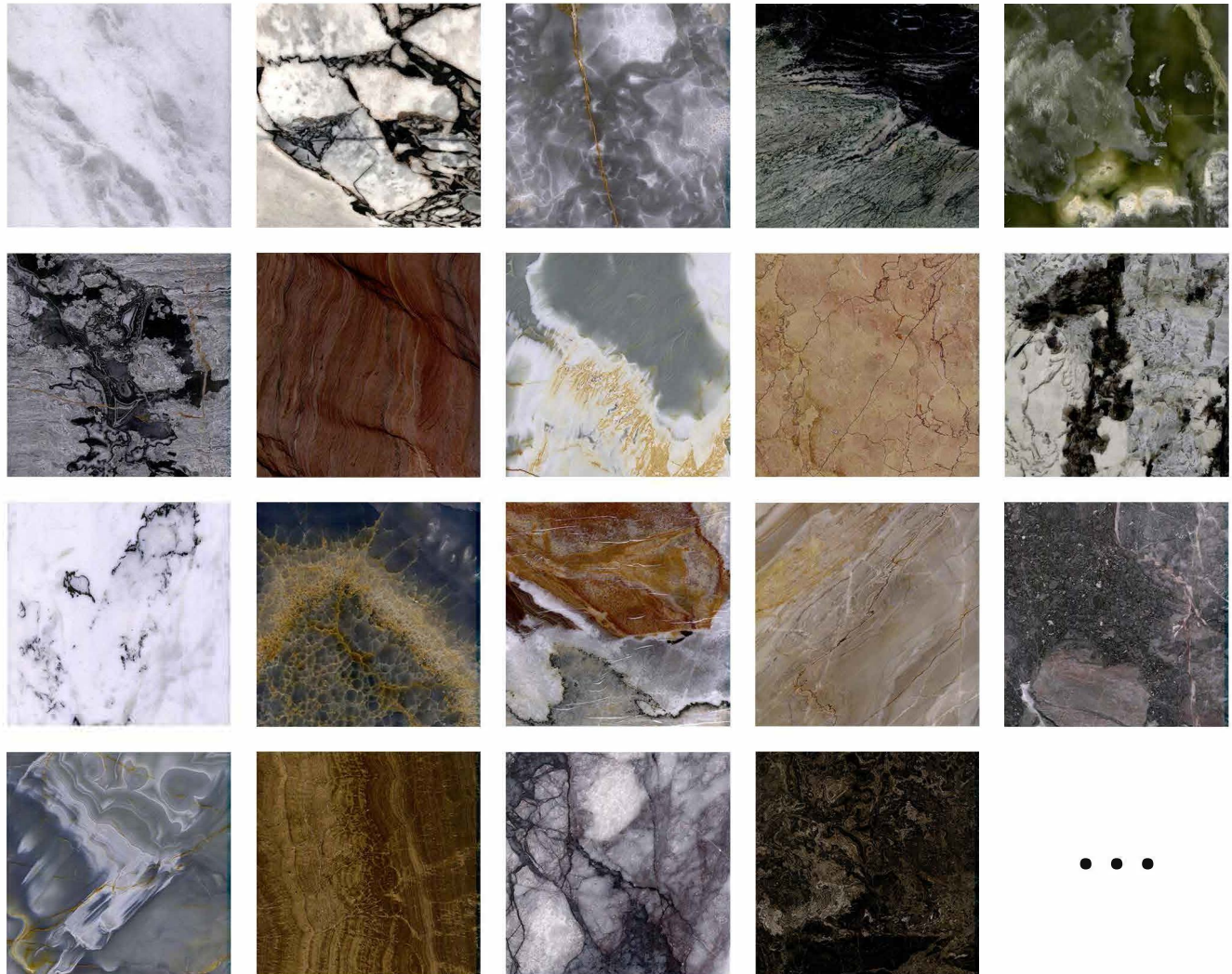
Apexstone Amoy Marble and Granite has access to the largest stone market in China with more than 2400 colors of natural stone.

This number includes marble, granite, limestone, travertine, onyx, and gemstone quarried from all over the world.

Here we select and handpick the most beautiful and luxurious marble for our TriaXtone products.

Please look at more stones that are available from [stoneGPS.cn](https://stoneGPS.cn), an app that has been exclusively created by Apexstone programmers to assist you with your selection.

Please contact us for our Bespoke design service and products that are totally unique. You can use the services of our genius chief designer Phillip Dutton-White to design an exclusive item for you.



...





## Apexstone Amoy Marble and Granite



+86 592 566 8980



[info@triaxtone.com](mailto:info@triaxtone.com)




[www.triaxtone.com](http://www.triaxtone.com)



<http://www.facebook.com/triaxtone>



Unit 1221, No.2 Building, Yunxi Financial Plaza,  
535 M Gaolin Road, Huli District,  
Xiamen, Fujian, China 361016

TRIAXTONE and  is the trademark registered in  
China, EU and USA by the company Apexstone Amoy  
Marble and Granite

© 2004-2020 Apexstone Amoy Marble and Granite all rights reserved

