

# Operating Instructions

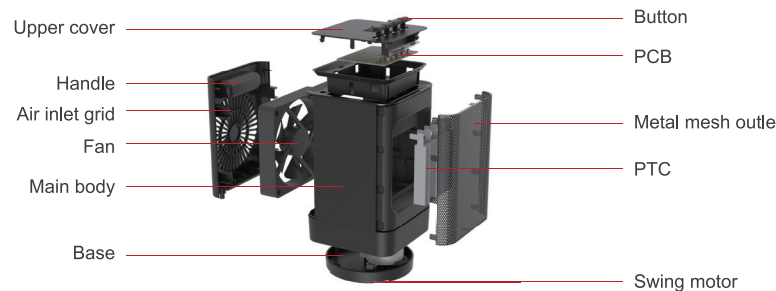
- Please check to verify that all the parts are completed and undamaged.
- 1.Check that the main switch at the backside is OFF, and then connect the power cord to a power source of 120V/10A.
  - 2.Turn on the main switch at the backside, then press the ON/OFF at the control panel. The heater will run at low speed.
  - 3.You can choose the SOFT/STRONG wind at the control panel. The power of SOFT mode is 450W, the STRONG mode is 950W.
  - 4.When the room temperature is warm enough, you can turn off the heater by pressing the FAN. The indicator light turns blue and PTC stops working, only the fan runs and blows the regular wind.
  - 5.Press the ON/OFF button. The heater will stop working; the fan will blow for another 20 seconds to cool down the PTC, which will help to extend its lifetime.

# Additional operating information

When the heater is covered or blocked by a foreign object while it is heating, the inner temperature sensor will sense overheat and stop the heater. When it cools down, you can restart the heater.

Press the SWING button to start the heater swinging automatically. Press the button again to stop.

# Structure



# Maintenance

- Please switch off the heater before maintenance:
- 1.Remove any oil or dirt from the heater immediately to avoid damage.
  - 2.Clean with a neutral detergent and then wipe with a soft cloth.
  - 3.After cleaning, pack it well in the package box, and put it in a dry place.
  - 4.Only clean the outer cover of the heater.
  - 5.Do not spray the heater with water directly.
  6. Do not clean with any acidic or alkali detergent, which may fade or damage the heater.

# Troubleshooting

Malfunction	Reasons	Solution
Heater doesn't start up	The power cord is not plugged in or not connected well.	Verify that the power cord is securely connected at the outlet.
	Main switch not connected well.	Check the switch.
	Main body damaged.	Consult the customer service.
Heater doesn't shut down	Switch not connected well.	Consult the customer service.
	Main body damaged.	Consult the customer service.
	PCB damaged.	Consult the customer service.
Noise from the fan	Foreign object in the fan.	Check and remove the foreign object.
Indicator light is off	Indicator light was damaged.	Consult the customer service.

# Portable Electric Warmer

DH-QN02



User Manual

Thank you for purchasing the Airdog electric mini-heater. This is an easy-to-use desktop heater. For the safe use of the heater, please read the following instruction carefully.

## Contents

Introduction.....	1
Warning .....	1
Caution .....	2
Working Principle .....	3
SPEC .....	3
Operating Instruction.....	4
Additional operating information .....	4
Structure .....	5
Maintenance .....	5
Troubleshooting .....	6



## Introduction

The Airdog electric heater is a simply designed, fashionable product. It comes equipped with a light-touch button and front indicator light (red as the heater, blue as the regular fan). It has a big fan to provide strong warm air, but still runs quietly. For safety, it is designed to shut down automatically when it is overheat or falls down. The heater can swing to cover a wider heating area. It has a handle over the back for easy carrying, which is convenient in home, office and similar places.

## Warning

**DO NOT touch the metal mesh outlet while the heater is working.**  
**DO NOT cover the heater; this may cause it to overheat.**  
**DO NOT block the air-inlet. Keep at least 10cm space around the air-inlet.**  
**DO NOT use the heater in or around water: a bathtub, sprayer or swimming pool etc.**  
**Keep the heater out reach of a child.**

## Caution

- 1.Before using the heater, please check that the applied voltage matches with the label.
- 2.If the power cord is damaged, do not use the heater. To avoid any danger, please call the manufacturer or a qualified repair person to replace the power cord.
- 3.Do not place the heater near curtains or anything else that might be easily drawn into the fan.
- 4.Do not place the heater on any unstable surface or near obstacles.
- 5.Do not use the heater in any flammable or explosive environment.
- 6.Keep the heater at least 39 inches (1 meter) from any flammable object.
- 7.Do not damage or uninstall the metal mesh outlet. It is used to separate the PTC heating element from the user.
- 8.When moving the heater, please verify that the power is off and the heater is unplugged.
- 9.Do not use the heater with a lean angle more than 10 degrees. Do not lay down the heater while heating. Only use it on a flat and stable surface.
- 10.Do not touch the plug with a wet hand in case of electric shock.
- 11.Do not put your finger or inset any pin into the heater while it is working.
- 12.Switch off the heater before cleaning. Do not clean it with gasoline, alcohol or organic detergent.
- 13.Do not use the heater in high temperatures or humidity, extremely dusty conditions, or around volatile materials, corrosive materials, or oil.

## Working principle

The heater uses the PTC as the thermal unit, which has the advantage of fast heat-up, high conversion rate, no flame, free oxygen consumption and long lifetime, so it is comfortable to use for home, office and similar places.

## SPEC

Name : Airdog Electric Heater	Rated voltage : 120V~
Model : DH-QN02	Rated power : 950W
Electric shock class : II	Rated Frequency : 60Hz

Please contact our customer support via email  
[support@siliconvalleyairexperts.com](mailto:support@siliconvalleyairexperts.com)  
<https://siliconvalleyairexperts.com/>  
for further assistance.



Silicon Valley Air Expert Inc.