

FitAir

YOUR ULTIMATE PERSONAL AIR PURIFIER **USER GUIDE**



Silicon Valley Air Expert



Airdogpro

Follow and like us on facebook



Airdogpro

Follow us on twitter



Customer Service : Support@AirdogUSA.com



Official Website : <http://airdogusa.com/>



Scan QR code for more Video Instructions
(Airdog Youtube channels)



(stand-alone version)



Please Recycle

FitAir

Your Ultimate Personal Air Purifier

FitAir is a smart personal air system that improves your health by freeing your air of viruses, smoke, bacteria, allergens and other harmful microbes. By cleaning within 25 square feet of your personal space at a rate of 3x per hour, this personal shield helps to prevent everyday intake of harmful contaminants and allergens both indoor and outdoor. With the one-of-kind wearable solution, FitAir could be attached to your tote, baby stroller, car seat etc. It is an ideal travel companion for shared spaces and polluted areas.

High Volume Air Flow

High porous inlets with 290 ports, allowing maximum air flow of 130 L/min (average adult breathing capacity is 10-20 L/min). It offers continuous cleaning of 25 square feet of space surrounding you. There are three-level of air flow adjustments.



Long battery life

A full charge lasts up to 6 hours (Standard Version) /10 hours on max (Booster Version) of continuous operation. Different colored lights indicate remaining battery life.



Hight



Medium



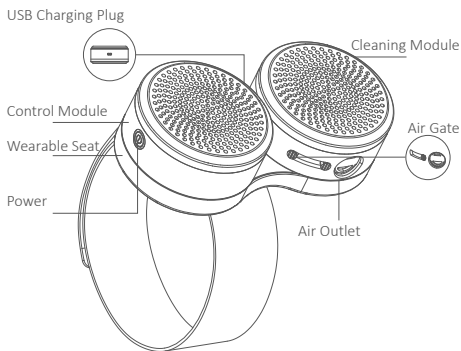
Low

Easy USB Charging

Normal use while charging



COMPONENTS



PACKING LIST

FitAir Portable Air Purifier × 1

H13/H11 HEPA Filter × 2

USB Charge Cable × 1

User Guide × 1

OPERATION INSTRUCTION

1. Basic Operation

ON : Short press to open
(Default: low wind speed),(Pic1)


Fan Speed Switch : Short press POWER button to adjust
Three speeds: Low, Mid, High

OFF : Long press to shut down

Battery : The color of POWER light represents the battery capacity level

 **Green** : High battery level

 **Yellow** : Mid battery level

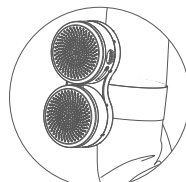
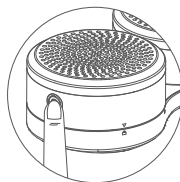
 **Red** : Low battery level

2. Wearable Option

(Wearable solution is the default form)

The wearable solution is suitable for taking a baby out in a stroller, gardening, heavy work and other outdoor activities.

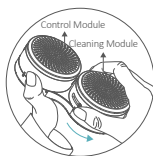
Put FitAir on your arm and tighten the velcro strap (Pic2).



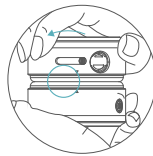
3. Stand-Alone Option

(The wearable form can be changed to the stand-alone form with the following 3 steps.)

1. Disconnect the cleaning module and the control module from the wearable seat by rotating counterclockwise (Pic1).
2. Line up the "arrow signs" on the cleaning module and control module.
3. Finish the process by rotating clockwise (Pic2).



Pic1



Pic2

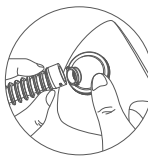
4. Mask Full Solution (optional)

1. You may use the mask we provide, or prepare a new mask by drawing a 3cm circle which is slightly smaller than the size of the air Inlet (Pic1). Cut out the circle that you draw with scissors.
2. Install the air inlet at the mask and connect with the soft tube (Pic2).
3. Install the air outlet of the soft tube at the air gate of FitAir (Pic3).
4. Adjust the length to your preference (Pic4).
5. Accessory pack* can be purchased separately.

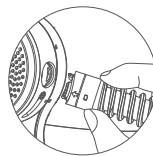
* Accessory pack includes 1 long silicon tube, 1 short silicon tube, 1 connector piece, and 2 masks.



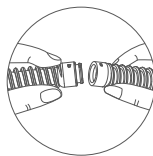
Pic1



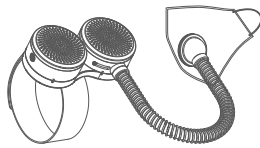
Pic2



Pic3



Pic4



Mask Full Solution is optional.

5. Filter Change

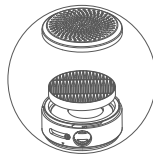
Best time for filter replacement:

Change the filter when the filter color changes to dark gray.

1. Open the cap of the cleaning module by rotating counterclockwise (Pic1).
2. Take out the dirty filter and put in a new one (Pic2).
3. Close the cap by rotating clockwise.
4. Yellow light blinks: need to change the filter.
5. Cleaning reset: long press power button for 5 seconds until unit is on.
6. Filter replacement is available on Airdog official website: www.airdogusa.com.



Pic1



Pic2

6. App Setup(optional)

Turn on the **Bluetooth** in device.

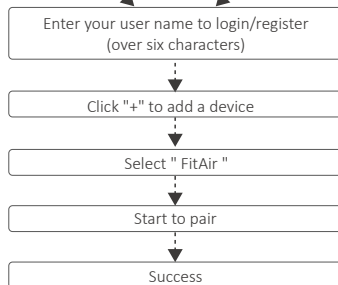
Keep the **Bluetooth** on when pairing with FitAir.



iOS Version
Scan to Download
or search " airdogpro "
in Apple Store



Android Version
Scan to Download
or search " airdogpro "
in Google Play Store



SPECIFICATION

Model: JHB-18	Input Power: 3W
Input Voltage: 5V $\overline{\square}$ ^{*1}	Purification Efficiency: 97.8%
Battery Life: 2~6h(Standard Version)/10h on max(Booster Version)* ²	

^{*1} DO NOT use 9v plug.

^{*2} Battery Life depends on the fan speed you choose.

* Please charge it before first use and recharge it in time when power is low to avoid battery failure.

WARRANTY

The company warrants this product to the original purchaser to be free from defects in workmanship and materials under normal use and service (all except human matters) for 1 year from date of receiving.

Please contact our customer support via email Support@AirdogUSA.com for further assistance.

* This is a positive pressure mask. It helps add some protection to you from all kinds of pollutants outside of your breathing zone. However, if you are sick or known to carry any virus, using FitAir will not prevent you from spreading your sickness or viruses to others.



Lightweight
Design



H13/H11
HEPA Filter



Ultra
Portable



Wearable
Option



USB
Charge



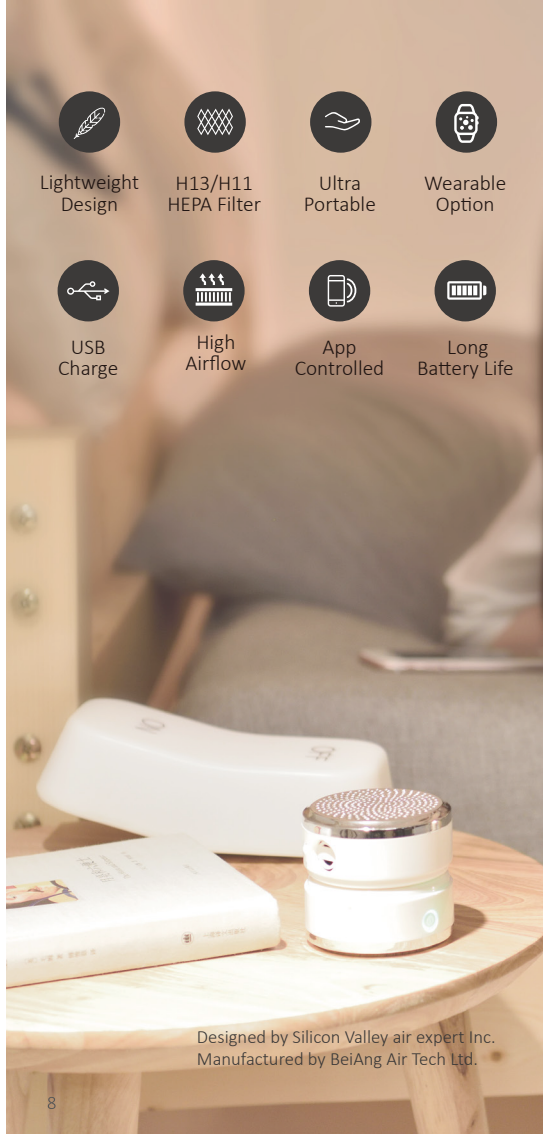
High
Airflow



App
Controlled



Long
Battery Life



Designed by Silicon Valley air expert Inc.
Manufactured by BeiAng Air Tech Ltd.