

FC-1 eBike User Manual

Thank you very much for choosing our product, hope you enjoy it!

Before you buy, please kindly read below important notice:

1. Please check your local law of ebike on road and always obey local law;
2. This ebike should only be used under Off-Road;
3. This ebike can only be used for people whose age is more than 18 years old;
4. Please don't modify or change any ebike parts without our permission, otherwise we will not take any responsibility;
5. Please wear Helmet and protective body gear! Always ride safely, taking care of yourself and others!

Step 1: Install Front Wheel:

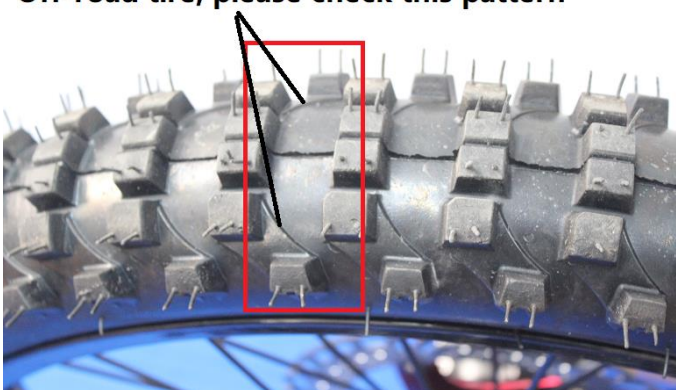
Please insert front wheel in front fork in correct direction(for all terrain tire version, please check direction arrow, for off-road tire version, please check pattern direction, we will show you from follow pictures), please try to put front wheel in correct position, so that both rotors just in the middle of each caliper and also the hole just fit DH hub, so that you can insert hollow tube through DH hub and tighten cap nuts of both sides. After this step, please also tighten 4 nuts which use to lock the hollow central tube of DH hub.



All terrain tire, with rotation direction arrow indication



Off-road tire, please check this pattern



1. Fasten Cap Nuts of both sides (8mm Allen Key)

2. Fasten 4 pcs screws of both sides to lock the hollow tube (4mm Allen Key)

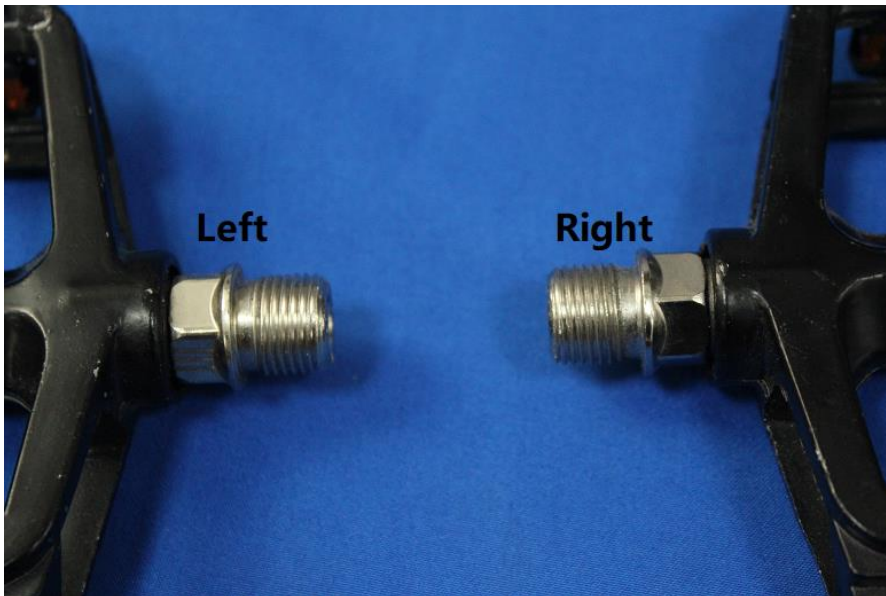
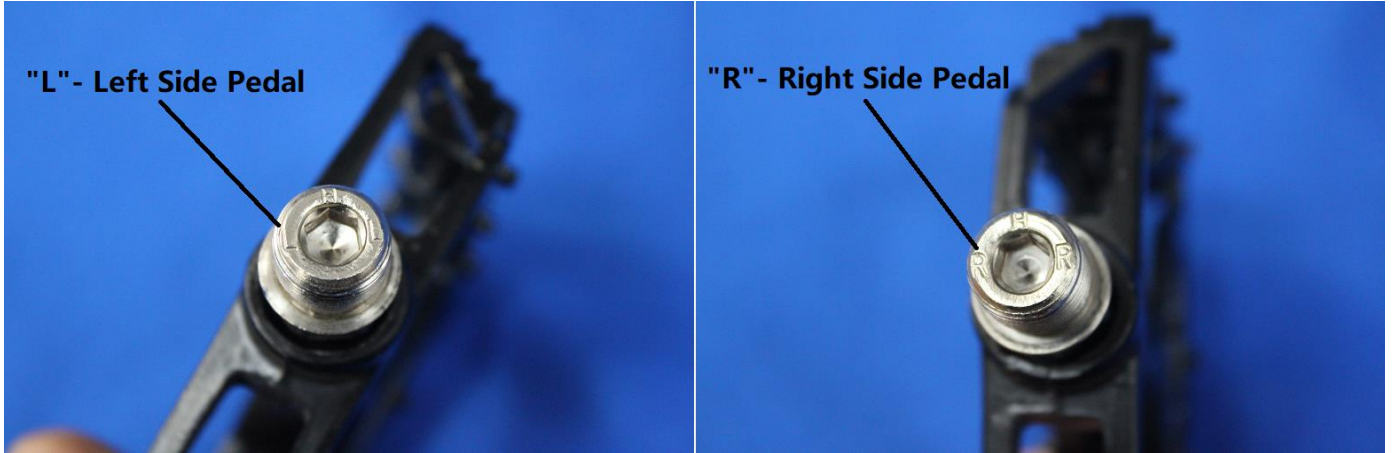
Step 2: Install Handlebar:

Please put handlebar in the middle of stem please check whether it is in the middle of scale, and then adjust angle and fasten 4 screws with 5mm Allen Key (Key button and light switch are at left side).



Step 3: Install Pedals:

Please check and install left and right pedals. Very important is please check the top of pedal screw arm and find left pedal "L" and right pedal "R", "L" means left pedal can only be installed at left side, and "R" means right pedal can only be installed at right side, wrong installation will damage crank (buyer should be responsible for this mistake). Left side pedal should be tighten with clockwise from crank back with 6mm Allen Key(from pedal side is anticlockwise), Right side pedal should be tighten with anticlockwise from crank back with 6mm Allen Key(or from pedal side is clockwise)



Step 4: Install Seat:

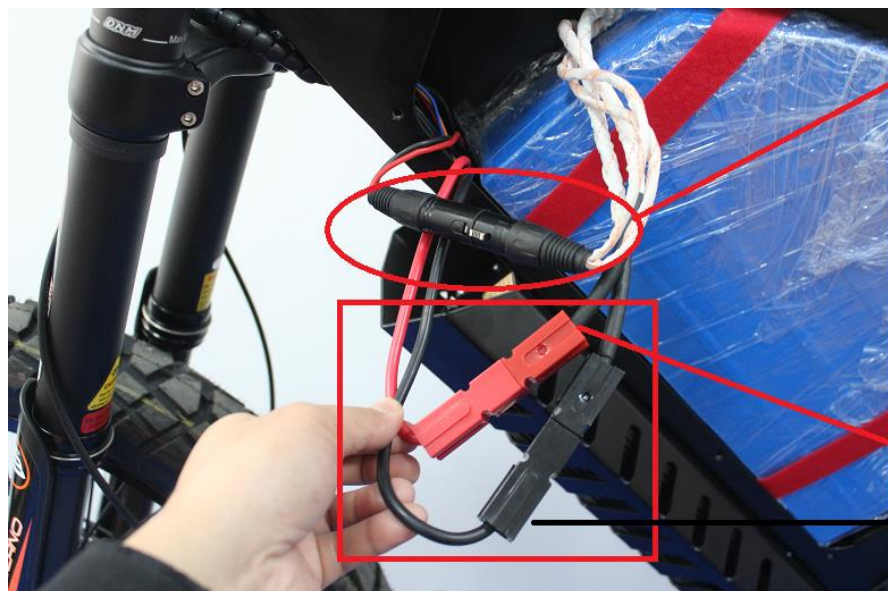
Insert seatpost till correct height, and then fasten seat tube clamp.



Step 5: Install Battery:

Open both sides battery cover panels (3mm Allen Key). Put battery inside, fix with band. Connect charge extension cable (cannon plug), connect discharge extension cable (Anderson Plug: red-positive, black-negative). Install both sides battery cover and tighten all screws (3mm Allen Key)





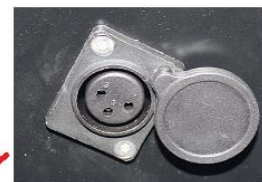
1. Connect Charge extension cable plug (Cannon plug)

2. Connect Discharge extension cable plug (Anderson Plug)

"Red" connect "Red"

"Black" connect "Black"

After you connect all extension cable, now you can also charge battery from outside charging port



Charging port on frame

Step 6: Test Remote control and power on display:

(1). How to start and power on FC-1 eBike:



1. Click "🔒" key
You will hear single "Beep"

2. Double click "⚡"
You will hear single "Beep"

3. Long press "Power" button, display is on

(2). How to power off FC-1 eBike and set alarm:



1. Long press "Power" button, display is power off

2. Click "🔒" to set Alarm, you will hear single "Beep"

Now, if someone want to turn on display or move eBike without your permission, it will make alarm and lock motor wheel.

(3). How to release alarm (stop alarm):

If you want to release alarm, just click "Unlock" key, you will hear double "Beep"



Click "🔒", you will hear double "Beep", Alarm is released

(4). How to locate your ebike (within limit distance):

If you forgot where you park your ebike, just click "Bell" key you will hear beep from your ebike and locate it.



Click "🔔", you will hear single "beep" and find your ebike

(5). Against robbery and theft:

If someone rob and ride your ebike, just click "Lock" will stop it.



Click "🔒" will stop ebike

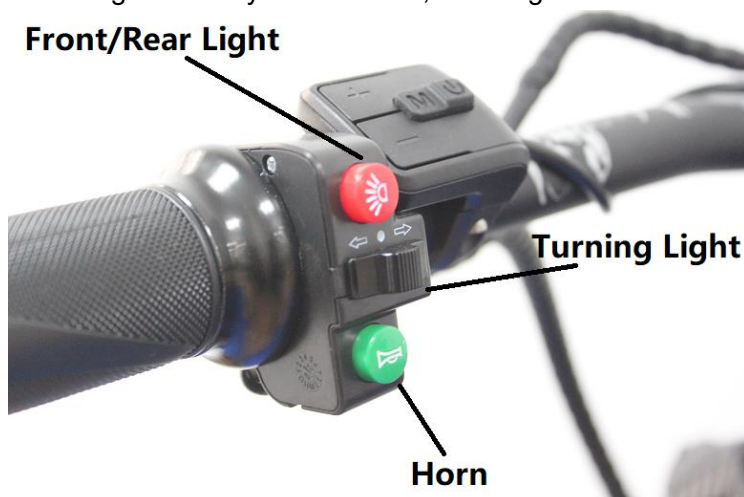
Step 7: Test Front/Rear Light, Brake Light, Turning Light and Horn:

Front Light/Rear Light: Press "Down" to turn on, Press "Up" to turn off

Turning Light: Turn Left – Left, Turn Right – Right, Middle – off

Brake Light: When you use brake, brake light is on

Front/Rear Light



Turning Light

Horn

Step 8: Test Ride:

Please have a test ride with speed level 2 or level 3 (please don't ride too fast at first test ride)



"+" Add speed level

"-" Reduce speed level

