

Product Manual

Product Frame Case 2170 Polly Lithium Battery

Mode

Version RMBFP V1.0

Client

Customer

Audit

Supplier

Certificate CE

Tel.:

Email:

WhatsAPP:

Polly Frame Case Battery User Manual

FAQ:

1. How to charge battery?

(1). Before you charge, please kindly check whether charger voltage is compatible with your battery:

51.8V (14 series) Li-ion battery use 58.8V charger

48V (13 series) Li-ion battery use 54.6V charger

36V (10 series) Li-ion battery use 42V charger

24V (7 series) Li-ion battery use 29.4V charger

(2). Connect charger with battery

(3). Connect charger with indoor AC power

(4). **Switch on battery (Very important)**

(5). When charging indicator light of charger turn to green, please still keep charging for about 1-2 hours for trickle current charging.

(6). Once battery is fully charged, please firstly disconnect charger with indoor AC power and then disconnect charger with battery. Switch off battery.

2. How long do I need to charge battery to full?

With our 5A charger, from empty to full need about = (your battery capacity)/(charging current)x1.2hours.

When charger indicating light turn to green, please still keep it about 1-2 hours for trickle-charge.

3. When battery is fully charged, do I need to disconnect charger?

Yes. This is safe. Please disconnect and don't always plug charger when it is fully charged. Please don't charge battery if no one at home.

4. How to install battery on your ebike?

Firstly fix bottom fixing bracket on bicycle down tube (water bottle holes). Put battery on socket and then slide down, turn key to "Lock" and lock it on bracket. Switch on battery, you can use your ebike now.

5. How to remove battery from your ebike?

Switch off battery. Turn key to "Unlock", push battery up and take it away.

6. If my frame down tube is short, there is no enough length to fix lower water bottle hole on bracket, what can I do?

(1). You can open fixing bracket controller box (if you don't use integral controller) and drill a hole inside to fix bracket on lower water bottle hole.

(2). You can drill a hole on your ebike down tube at higher position and then insert nut by riveting

7. Important Notice:

Do not use or charge the battery under high temperature.

Do not short-circuit the positive (+) and negative (-) terminals of the battery.

Do not immerse the battery into water and acidity liquids, or allow it to get wet.

The battery should be stored in a clean, dry circumstance and charged full with charger every two months when not use for long time.

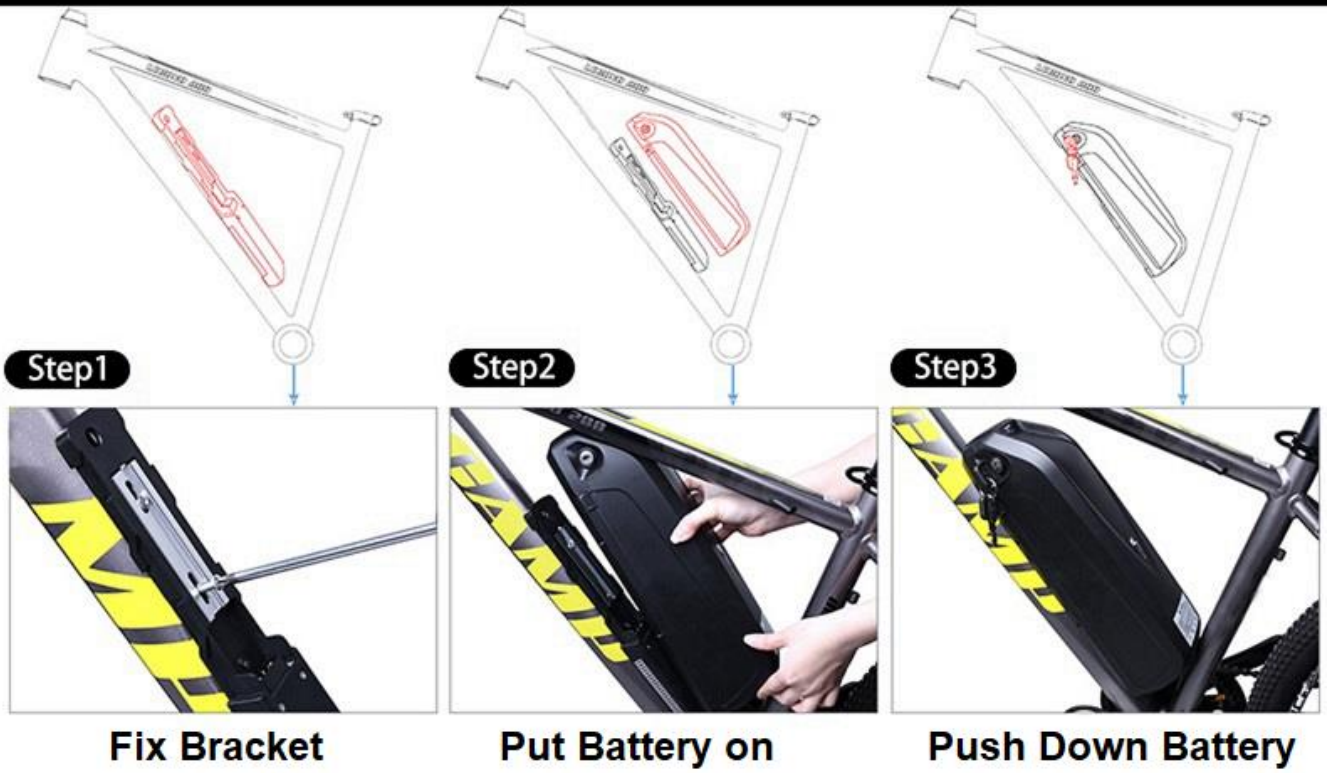
Please charge battery by using our special charger.

Do not let the battery close to fire.

Do not disassemble the battery.

The battery pack should be charged for once every 3 months while storing

Installation instruction



Loading Effect Drawing

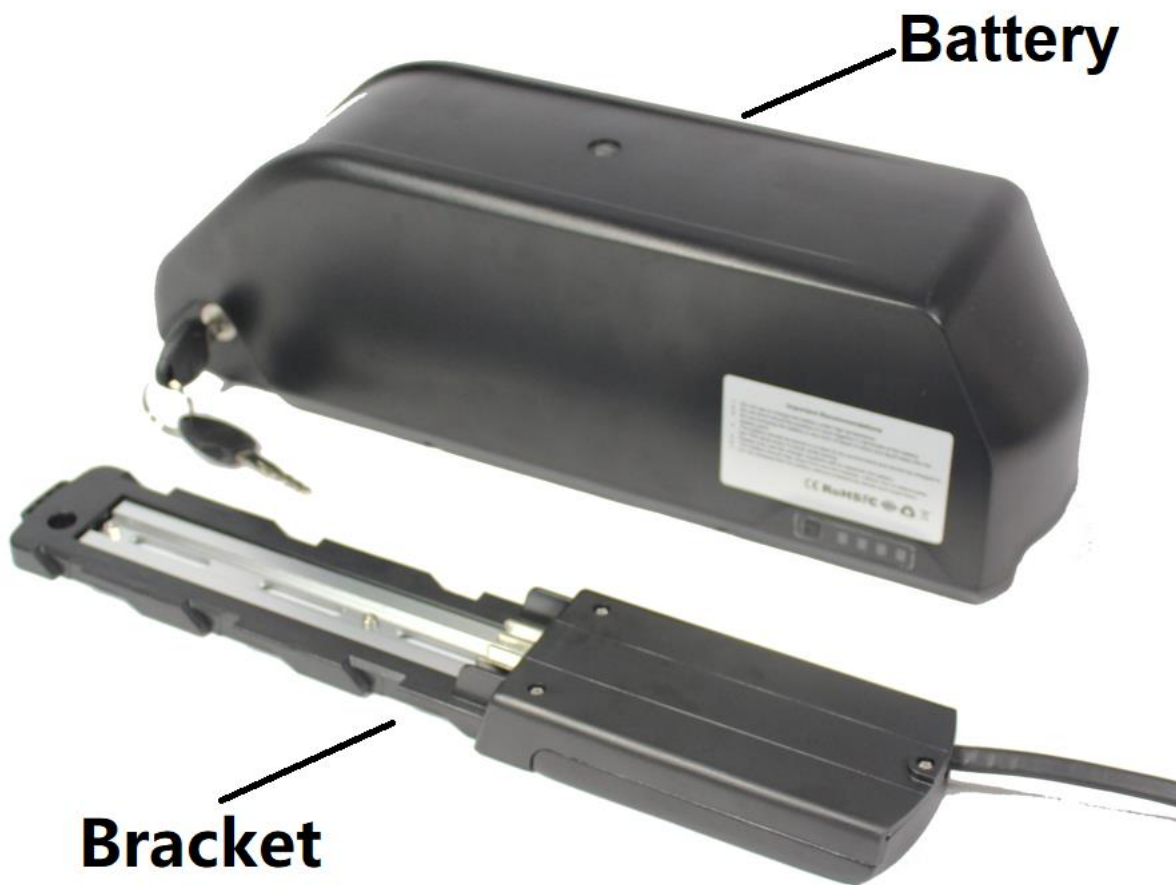


Wiring Diagram



Battery Parts Indication

(1). Battery and Battery Bottom Fixing Bracket:



(2). Battery Switch, Charging Port:

“o”: Switch off

“-”: Switch on



(3). Power Gauge:

Press Power Gauge Button, will see power gauge



Total 4 pcs LED Lights:

1. One red + Three Green LED lights means: 100%
2. One red + Two Green LED lights means: 75%
3. One red + One Green LED lights means: 50%
4. One red + 0 Green LED lights means: Less than 25%



(4). Battery Lock Indication:



Unlock



Lock

(1). "Lock" position, battery is locked on bracket.

(2). "Unlock" position, battery is unlocked, you can push and take it away.

(5). Installation Demo:



After-sale Service and Warranty

We warrant that the products bought from us can be provided service freely if the products are non-conformities in material and workmanship within warranty period.

Timing and scope of warranty: Warranty period starts from date of Ex-factory, within 12 months. If it is out of warranty, We still can repair for customer, but the concerning material cost, labor cost, freight etc. will be paid by customer.

We warranty does not cover or apply to the following:

- (1). Damage, failure and/or loss caused by refitting, neglect, improper maintenance, competition or commercial purpose, misuse, abuse or accident;
- (2). Damage, failure and/or loss caused by improper installation, adjusting or repairing;
- (3). Damage, failure and/or loss irrelevant to material and workmanship, e.g., failure to follow instructions by consumers;
- (4). Damage, failure and/or loss caused by product's appearance and surface change which doesn't affect its function;
- (5). Damage, failure and/or loss caused by unauthorized service or installation;
- (6). Damage, failure or loss caused by normal wear and tear.

We reserve the right to repair the components or replace the components, and is only Responsible for repairing or replacing of the products.