

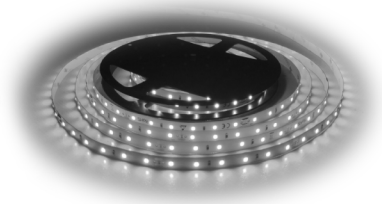


# LED strip light

Read this user guide carefully before installation, and keep for future reference.

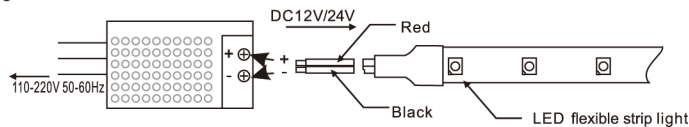
## INSTALLATION GUIDE

- ▲ The installation and maintenance work should be performed by a qualified electrician.
- ▲ Isolate power before installation.
- ▲ Warranty void if product had been altered or tampered with

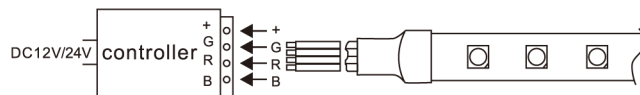


### Connection instruction

1) Red , yellow , blue , green and white single color strips : leave two pieces of power wire from strips , one is red , another is black , their diameter are both 20AWG and their length both for 150mm.  
Red wire connects with anode of power, so black wire just is opposite .  
If use controller , red wire connects with the anode of controller, So black wire just is opposite pole.  
Diagram of connection as following:



2) RGB color strips: leave four power wires from strips, including black, green, red and blue color , their diameter are all 20AWG and their length are also same with 150mm. Black wire connects to common pole of controller (anode), so red , green and blue color wires connect with respective pole (cathode) of controller.  
Diagram of connection as following :



### Installation instruction

A. Installation With 3M Tape and connector:

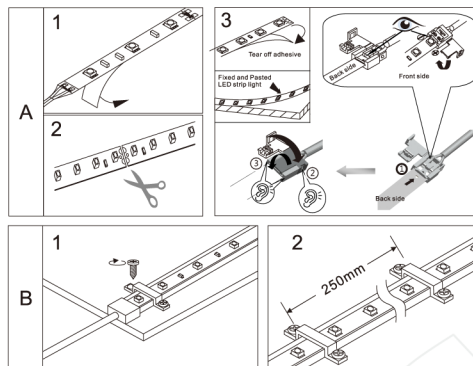
- 1) The back of strips stick with 3M tape. Only need to give the face paper on 3Mtape when use.
- 2) When install strips, it can be cut at the marks of Scissors according to actual length.
- 3) Tear off 3M tape, open free connector totally and two pins should be connected with copper on strip light, press it into hole which specially designed on FPC to fix stronger.

Solder-free terminal can be used as below terms:

- (1) Voltage 12V Power <30W
- (2) Voltage 24V Power <60W

B. Installation with mounting clips:

- 1) Fix the strips with screw of clip lock.



## WARRANTY

In accordance with **elekzon's** standard terms and conditions of sale, **elekzon** warrant this product to be free from defects in materials and or workmanship for a period as stated below for goods not subject to incorrect installation, maintenance, operation, mishandling, environmental, unauthorised modifications or electrical operating conditions outside the nominated product specification as detailed in these installation instructions. The benefits to you given by this warranty are in addition to other rights and remedies you have under law. Our goods come with warranties and guarantees that cannot be excluded under the Australian Consumer Law (Consumer Guarantees). You are entitled to replacement or refund for a major failure and compensation for any other reasonably foreseeable loss or damage. You are also entitled to have the good repaired or replaced if the goods fail to be of acceptable quality and the failure does not amount to a major failure.

**Warranty term – Twenty-four (24) months from date of purchase**

### NOTE:

**elekzon** encourages recycling, please consider the environment when disposing off packaging and components.

As a guide for continual operation installations, a twelve (12) hour duration for Industrial and Commercial applications and six (6) hour duration for Residential applications should be considered.

