

CONFIER

Electric Heating Wrap



**User Manual
KH-018C**

Safety Instructions



To operate this warming product properly and safely, there are some critical safety precautions you need to follow. As with all electrical appliances, there is an inherent danger of overheating, fire or personal injury if the product is not used correctly. Please carefully read what follows before using the warming product.

Never use this warming product with:

Infants or very small children;
People with disabilities;
Anyone who is immobile or cannot operate the controls properly;
Anyone who is insensitive to heat (e.g. a person with poor circulation);
Anyone who cannot or will not understand these directions.

Setting up

NEVER trap or pinch any of the electrical cords in any way.
Make sure the cords are NEVER rested between the mattress and box springs.
The heated area should always lie flat to prevent overheating.
If the plug does not fit into your outlet, contact a qualified electrician.
Be sure that the power supply is used only on 120V, 60 HZ current supply.
Make sure the cord from the controller to your heated product is connected and locked tightly.
You may use this electric product with any sheet mattress pads or other blankets but NEVER in combination with any other electric blankets or electric mattress pads.
The warming product should never be folded, balled up or bunched in any way when in use, or it may result in overheating and/or permanent wrinkling of the fabric.

Care and Maintenance

Do not use with generators, power converters, or inverters.
NEVER use pins in and around the warming product.
Cats, dogs and other pets should always be kept away from the product, as a sharp claw may result in damage to the heating element.
Keep the controls away from drafty areas that may become damp or wet, such as an open window.

FOR MACHINE WASHING, USE GENTLE MODE; DO NOT TUMBLE DRY.

Safety Instructions

INSTRUCTIONS BEFORE USING

PLEASE CHECK IF THE UNIT AND ITS PARTS ARE INTANT AND NOT DAMAGED.IN ANY WAY, IF THERE IS ANY ISSUE,PLEASE CONTACT THE SELLER.



WARNING:

**PLEASE ENSURE THAT POLYBAG IS KEPT AWAY FROM CHILDREN!
RISK OF SUFFOCATION!**



IMPORTANT SAFETY INSTRUCTIONS, DO NOT DESTROY

DANGER-- To reduce the risk of burns, electric shock and fire, this product must be used in accordance with the following instructions.

1. READ ALL INSTRUCTIONS
2. DO NOT USE WHILE SLEEPING.
3. NEVER LEAVE THIS APPLIANCE UNATTENDED, ESPECIALLY IF CHILDREN ARE PRESENT.
4. DO NOT USE ON AN INFANT.
5. DO NOT USE ON AN ANIMAL.
6. THIS PAD IS NOT TO BE USED ON OR BY AN INVALID, SLEEPING OR UNCONSCIOUS PERSON, OR A PERSON WITH POOR BLOOD CIRCULATION UNLESS CAREFULLY ATTENDED.
7. DO NOT USE ON AREAS OF INSENSITIVE SKIN.
8. BURNS CAN OCCUR REGARDLESS OF CONTROL SETTING, CHECK SKIN UNDER PAD FREQUENTLY.
9. DO NOT USE PINS OR OTHER METALLIC MEANS TO FASTEN THIS PAD IN PLACE.
10. DO NOT SIT ON OR CRUSH PAD – AVOID SHARP FOLDS.
11. POSITION PAD ON TOP OF, AND NOT UNDERNEATH THE BODY. HEAT LEVEL MAY INCREASE WHEN HEAT IS TRAPPED.
12. NEVER USE PAD WITH LINIMENTS, OINTMENTS OR SALVES, ESPECIALLY THOSE CONTAINING HEAT-PRODUCING INGREDIENTS, AS SKIN BURNS COULD RESULT.
13. NEVER PULL THIS PAD BY THE SUPPLY CORD.
14. DO NOT USE THE CORD AS A HANDLE
15. LOOP CORD LOOSELY WHEN STORING. TIGHT WRAPPING MAY DAMAGE CORD AND INTERNAL PARTS
15. NEVER UNPLUG PAD FROM ELECTRICAL OUTLET WITH A WET HAND.
16. USE THIS PAD ONLY ON A 120 VOLT AC ELECTRICAL OUTLET. UNPLUG WHEN NOT IN USE.
- 17.FOR MACHINE WASHING,USE GENTLE MODE; DO NOT TUMBLE DRY.

Failure to observe the above instructions may constitute misuse of the product and can cause serious injury or burns.

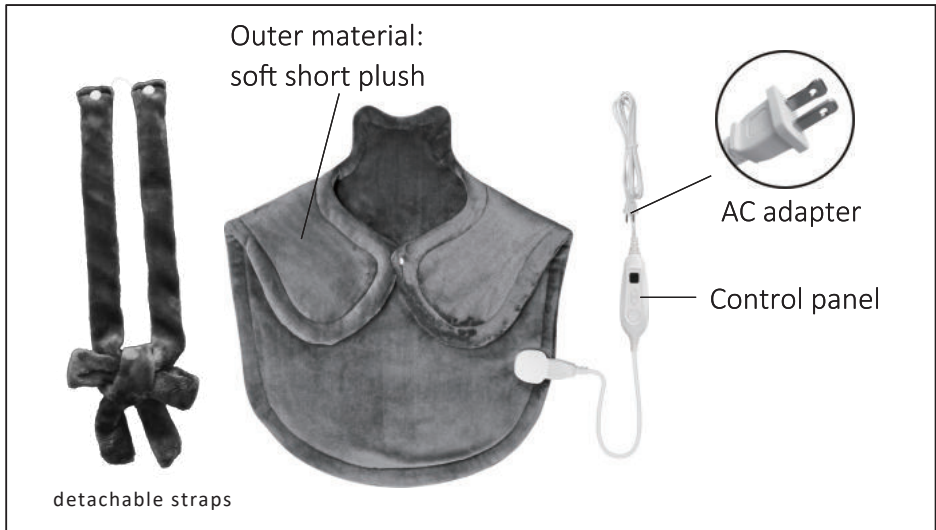
Instruction

Thank you for purchasing Electric Heating Pad from SNAILAX.
With normal care and proper treatment, it will provide years of reliable service.

Please read all instructions carefully before use this product.

Please retain this manual for future reference.

FEATURES



CONTENTS

- Electric Heating Wrap
- User manual

TECHNICAL DATA

Item No.:	KH-018C
Measurements:	25 x 26 inches (Unbutton)
Weight:	2.1 lbs
Input:	Input: AC120V/60Hz
Rated Power:	100W
Automatic runtime:	2-Hours



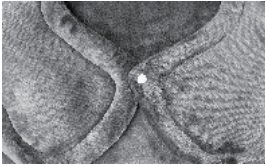
Intertek
5005416
CONFORMS TO UL STD.130
CERTIFIED TO CSA STD.C22.2 No.15

Setup and Operation

When setting up your heating wrap, be sure to follow these steps in order.

1. Place the Heating Wrap on the shoulder and buckle the button on the armband. (img.1)
2. Connect the power cable to the connector on the heated wrap. To connect the cable to the connector, align the connector and cable arrows and push gently until it locks.

CAUTION: The cable must be fully plugged in. A loose connection could cause a fire hazard. (img.2)



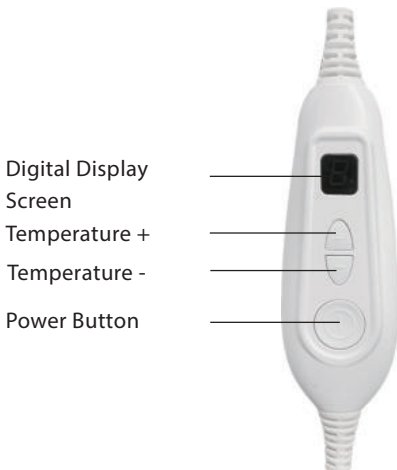
(img.1)



(img.2)

3. Plug the power cord into an electric outlet (120V/60Hz).
4. Make sure all cords are tangle free and not trapped or pinched in any way.
5. Do not wrap the controller in the heated product while in use.
6. Do not use with generator power.
7. Turn on the device by operating the controller (refer to controller instructions.).
8. To disconnect the controller, first unplug the cord from the outlet, then pinch sides of the connector and pull apart.

Controller instructions



- Digital Display Screen
- Temperature +
- Temperature -
- Power Button

1. Plug into an electric outlet, The digital screen will show 0, and after 1 second, 0 will disappear and the heating pad is on standby mode.
2. Press the Power button to turn on the heating pad. Press the Temperature + /- Button to select the heat between 1-6 levels. (Default setting is level 3.)

Note:

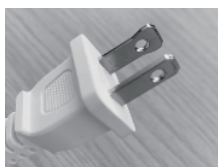
This product produces a warming heat. It is not intended to be used as a therapeutic heating pad. Please allow a few minutes to reach maximum temperature. The maximum temperature: approx 140F.

Care and Cleaning Instructions

1. Before cleaning the pad, unplug it from the power outlet, unplug the cable from heating pad and let it cool down for at least ten minutes.
2. DO NOT immerse the power cable with controller in water.
3. The heating pad can be washed in a normal wash at Max 104F.
4. DO NOT wipe the product with alcohol or harsh chemicals such as thinner or bleach.
5. DO NOT try the heating pad in a tumble drier.
6. The heating pad can be cleaned with a soft brush when dry.
7. DO NOT dry cleaning.
8. Make sure the product is completely dry before the next use.
9. Store the heating pad in a cool, dry place out of reach of children.
10. Avoid contact with sharp edges or pointed objects which might cut or puncture the fabric surface.

TROUBLESHOOTING GUIDE

Problem	Cause	Solution
The appliance does not warm up	The appliance is not connected to power	Inset the power plug into the power socket and switch on the appliance
	The appliance is not seitched on	Switch on the appliance
	The appliance is defective	Please contact customer service
The letter "P" is shown on the display screen or the display does not light up	The pad part and the controller are not, or not correctly connected	Unplug the power plug properly. plug the heating pad into the controller, re-switch on the controller.
	The appliance is defective	Please contact customer service
The letter "E" is shown on the display screen	The pad controller has overheated protection	Unplug the power plug, sprecd out the pad and let it cool down, then re-switch the controller.
	The pad heating element has damaged due to overheated, the controller has blown the over-tempthermal fuse	The pad is damaged. Need to be scrapped.



Note:

This heating Pad has a polarized plug (one blade is wider than the other) as a safety feature. This plug will fit into a polarized outlet only one way. If the plug does not fit fully into the outlet, reverse the plug. If it still does not fit, contact a qualified electrician.

Warranty

If you have any issue about the product, please feel free to contact us by sending email to supportus@comfier.com We will strive to provide the best service possible within 24 hours.

30 days unconditionally return

Comfier product can be returned to receive a full refund for any reason within 30 days. Please contact our customers service (supportus@comfier.com), our staff will contact you within 24 hours.

90 days return/replace

Comfier product can be returned / replaced within 90 days if the product break down in the period of proper use.

12 months Warranty

If the product breaks down within 12 months in the period of proper use, customers can still seek for the relevant product warranty to get it replaced.

Attention!

No warranty will be given to any force majeure or man-made causes for a defective product, such as improper care, personal tear down and willful damage, etc.

Extend Warranty for Free

1) Enter the following URL or scan the QR code below to find COMFIER facebook page and like it, enter "Warranty" to messenger to extend your warranty from 1 year to 3 years.



<https://www.facebook.com/comfiermassager>

OR 2) Send message "Warranty" and email us supportus@comfier.com to extend your warranty from 1 year to 3 years.

Have question ?

Tel: (248) 819-2623
Monday-Friday 9:00AM-4:30PM

Email: supportus@comfier.com

FCC STATEMENT

NOTE: This equipment has been tested and found to comply with the limits for a Class B digital device, pursuant to Part 15 of the FCC Rules. These limits are designed to provide reasonable protection against harmful interference in a residential installation. This equipment generates, uses and can radiate radio frequency energy and, if not installed and used in accordance with the instructions, may cause harmful interference to radio communications. However, there is no guarantee that interference will not occur in a particular installation. If this equipment does cause harmful interference to radio or television reception, which can be determined by turning the equipment off and on, the user is encouraged to try to correct the interference by one or more of the following measures:

- Reorient or relocate the receiving antenna.
- Increase the separation between the equipment and receiver.
- Connect the equipment into an outlet on a circuit different from that to which the receiver is connected.
- Consult the dealer or an experienced radio / TV technician for help.

This device complies with Part 15 of the FCC Rules. Operation is subject to the following two conditions: (1) this device may not cause harmful interference, and (2) this device must accept any interference received, including interference that may cause undesired operation.

WARNING: Changes or modifications to this unit is not expressly approved by the party responsible for compliance could void the user's authority to operate the equipment.



COMFIER US CORPORATION
Address: 573 BELLEVUE RD
NEWARK, DE 19713 USA
www.facebook.com/comfiermassager
supportus@comfier.com
www.comfier.com



Intertek
5005416
CONFORMS TO UL STD.130
CERTIFIED TO CSA STD.C22.2 No.15

Manufacturer:
Ningbo Kanghong Electrical Appliance CO., LTD
Model: KH-018C