

# CONFIER

Cooling Seat Cushion  
with Massage

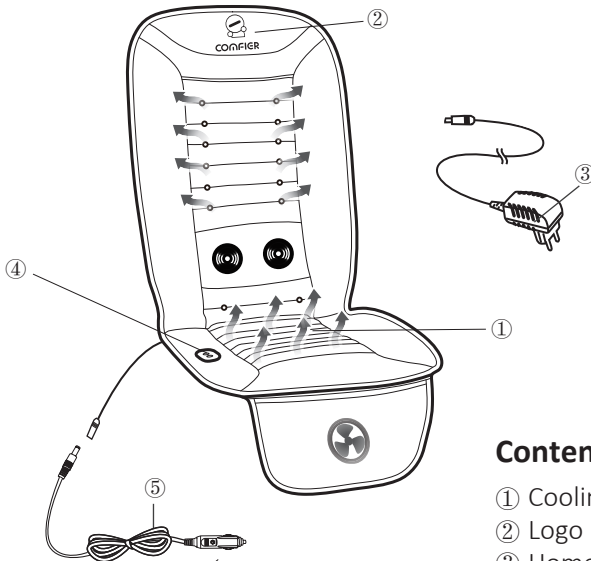


User Manual  
CF-2502

## Safety Instructions

1. This product should not be used by children without adequate adult supervision.
2. Consult your doctor prior to using this product, if you are pregnant, you are fitted with a cardiac pacemaker, implant or other aid, you are suffering from diabetes, you have any concern regarding your health.
3. Do not use if you have sensitive skin, skin disorders or open wounds.
4. Discontinue use immediately should you feel any discomfort or pain.
5. Never leave the product unattended, especially if children are present.
6. Do not cover the product or obstruct the air vents when it is in operation.
7. Avoid excessive use of the product. Extensive use could lead to increased wear and tear and shorten product lifespan.
8. Remove adaptor from socket when not in use.
9. To minimize risk of electric shock, do not use on wet skin.
10. Keep product away from moisture. Do not use if the product or any of its components or accessories are damp or wet.
11. Product is intended for indoor use only.
12. Do not dismantle or attempt to dismantle or replace product components.
13. Use only with the supplied accessories. Voltage must be compatible with the voltage indicated on the supplied power adaptor.

**Failure to observe the above instructions may constitute misuse of the product and can cause serious injury or burns.**



Car adapter plug  
(universal fit for 12V Car)

### Contents:

- ① Cooling Seat Cushion with Massage
- ② Logo
- ③ Home Adapter (input:100-240V)
- ④ Control Panel
- ⑤ Car adapter (input 12V)

# Installation Instruction (on the Car Seat)

## Accessories:



A

elastic strap

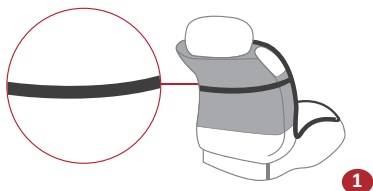


B

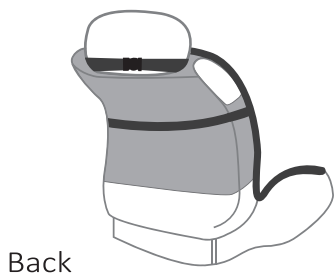
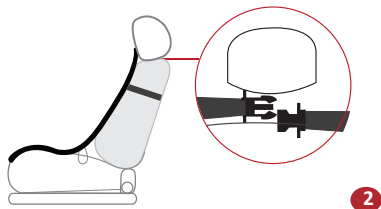
buckle

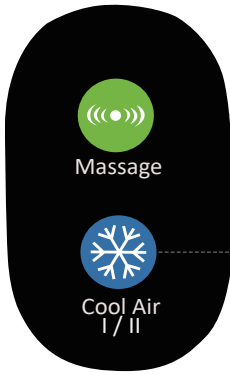
## Installation Steps:

Secure the cushion in place by wrapping the elastic strap (A) around the car seat



Fasten the buckle (B) around the back of the headrest





### **Massage:**

Press to choose mode I / mode II / mode III / off

### **Cool Air:**

Press to choose I high/ II low /off

### **⚠ Attention !**

The cushion be 1.2 inches thickness, will increase seat height while put on the car seat. Please adjust the seat to a comfortable position before driving.

### **⚠ Attention !**

Please only use the provided home adapter and car adapter.

For safety practice, massage function is set with an auto-off 30-minute timer so it will turn off automatically after 30 minutes. No auto-off timer for cooling.

**⚠** The massage can be operated independently or simultaneously with Cooling function.

### Technical Specifications:

<b>Dimension:</b>	41.7x18.5 inches
<b>Weight:</b>	2.2lbs
<b>Voltage:</b>	Input: AC 100-240V ~ 50/60Hz Output: 12VDC 1.0A
<b>Nominal Power:</b>	max. 12Watt

### Troubleshooting:

TROUBLE	CORRECTION
NO POWER	CHECK IF ADAPTER IS PLUGED PROPERLY INTO SOCKET.
	CHECK IF ADAPTER OUTPUT IS CONNECTED PROPERLY TO PRODUCT POWER INLET WIRE.
SUDDEN POWER-OFF	CHECK IF ALL CONNECTIONS BE IN APPROPRIATE CONDITION. PRESS THE POWER BUTTON TO TURN ON THE DEVICE.
	CHECK IF IT IS CAUSED BY AUTO-OFF TIMER AFTER 30 MINUTES HEATING. IF SO, PRESS AGAIN THE "POWER" BUTTON TO SWITCH IT ON.

### Care and Cleaning Instruction

1. Do not wash the cushion in washing machine or immerse the product in water.
2. Wipe the product with a soft, dry cloth to clean the product.
3. Always turn off before cleaning.
4. Do not wipe the product with alcohol or harsh chemicals such as thinner or bleach.
5. Do not overstretch the elastic back straps.
6. Do not cause obstruction to the blower inlets.
7. Keep the air vents and inlets clear of dust and dirt build-up.  
Vacuum the product if needed.
8. Keep away from moisture, heat, fire or exposure to direct sunlight.
9. Avoid contact with sharp edges or pointed objects which might cut or puncture the fabric surface.

# Warranty

If the product(s) is damaged or defective within a reasonable time, COMFIER offers the warranty as below.

Period	Return for refund	Return for replacement	Who paid shipping?
Within 30 Days	Yes	Yes if undamaged	Comfier
31- 90 Days	Yes after being justified	Yes after being justified	Comfier
91 Days - 1 Year	No	Yes after being justified	Buyer
1 Year - 3 Years	No	Only to buyers who have received extended warranty	Buyer

Comfier warrants the product to be free from defects in workmanship and materials, under normal use, for a period of 12 months from the original invoice date, except as noted below. Comfier products can be repaired or replaced within warranty period or returned for refund within 90 days if the products break down in the period of proper use.

The warranty extends only to consumers, NOT to any retailers or resellers. This warranty is effective only if the product is purchased and operated in the country in which the product is purchased. Warranty claims for product defects, unless extended warranty is registered, expire 12 months from the purchase day. Warranty claims CANNOT be processed for items that have exceeded the warranty period. The warranty does NOT cover the replaced, refurbished product. The warranty does have other limitations as below "Warranty Limitations". To obtain warranty service on Comfier products, follow "Warranty Claim Procedures" below.

## Warranty Claim Procedures:

1. Any product the customer believes is defective and seeks for warranty, the customer must provide to Customer Support:
  - a) Valid proof of purchase (see below the definition of valid proof of purchase);
  - b) Pictures and/or description are required to claim defective merchandise;
  - c) Model number and Series Number label attached to each product
2. If the warranty claim is justified by Comfier Customer Support, customer(s) will obtain from Comfier a Warranty/Return Authorization Number (RMA Number)
3. Comfier reserves the right to specify that items be returned to the designated warehouse for inspection or be inspected by our representative in the field or be retained by customer.
4. Any claim for defective merchandise returns must be packed in original packaging
5. The item(s) will be repaired or replaced or a refund credit will be issued once the item(s) are delivered. When returning items with RMA# and a prepaid shipping label provided by Comfier, Comfier takes responsibility for any damage or loss incurred in transit.

## Valid proof of purchase under this Warranty:

Order numbers from online purchases made through Comfier official store ([www.comfier.com](http://www.comfier.com)) or Comfier's direct-authorized resellers, currently only at Amazon/eBay/Walmart. For product(s) obtained from other Channels, please contact the customer service of the Channel directly for appropriate solution.

### Warranty Limitations(this warranty does not include):

Normal wear and tear; Any condition resulting from other than ordinary residential wear or any use for which the product was not intended, such as use in rental or contract trade or commercial use; Any condition resulting from incorrect or inadequate maintenance or care; Damage resulting from misuse, abuse, negligence, accidents or shipping damage, exposed to environmental conditions temperatures, water, improper operation,improper installation, improper use of electrical supply; transportation damage; theft,vandalism or;Damage resulting from the attachment or modification of any unauthorized accessories;Fail to show the valid proof of purchase;Lost or stolen products;Items that have expired their warranty period; No quality-related issues (after 30 days of purchase);Free product/ Gift offer by Comfier; unauthorized repairs or modification; Replaced or refurbished product.Dissatisfaction due to buyer's remorse (after 30 days of purchase).

### Refund Procedures:

(Refer to <https://www.comfier.com/pages/return-policy>)

### Warranty Disclaimer

THE WARRANTY PROVIDED HEREIN SHALL BE THE SOLE AND EXCLUSIVE WARRANTY. COMFIER SHALL HAVE NO LIABILITY FOR, AND EXPRESSLY DISCLAIMS ANY WARRANTY OR AFFIRMATION OF FACT, EXPRESS OR IMPLIED, OTHER THAN AS SET FORTH IN THIS WARRANTY STATEMENT, INCLUDING, WITHOUT LIMITATION

- (1) THE IMPLIED WARRANTIES OF MERCHANTABILITY AND FITNESS FOR A PARTICULAR PURPOSE;
- (2) ANY WARRANTY OR AFFIRMATION OF FACT RELATED TO MISUSE, IMPROPER SELECTION, RECOMMENDATION, OR MISAPPLICATION OF ANY PRODUCT; AND
- (3) ANY WARRANTY OR AFFIRMATION OF FACT THAT THE CATALOGS, LITERATURE AND WEBSITES IT PROVIDES ACCURATELY ILLUSTRATE AND DESCRIBE PRODUCTS.

Comfier reserves all the right for final interpretation of these Terms of Warranty and Return Policy above and the aright to change, modify, add or remove portions of these terms at any time without prior notification.


### Extend Warranty for Free

- 1) Enter the following URL or scan the QR code below to find COMFIER facebook page and like it, enter“Warranty” to messenger to extend your warranty from 1 year to 3 years.



<https://www.facebook.com/comfiermassager>

#### *Have question ?*

 **Tel:** (248) 819-2623  
Monday-Friday 9:00AM-4:30PM

 **Email:** [supportus@comfier.com](mailto:supportus@comfier.com)

- OR 2) Email us at [supportus@comfier.com](mailto:supportus@comfier.com) with “Warranty” as subject line to extend your warranty from 1 year to 3 years.

## FCC STATEMENT

NOTE: This equipment has been tested and found to comply with the limits for a Class B digital device, pursuant to Part 15 of the FCC Rules. These limits are designed to provide reasonable protection against harmful interference in a residential installation. This equipment generates, uses and can radiate radio frequency energy and, if not installed and used in accordance with the instructions, may cause harmful interference to radio communications. However, there is no guarantee that interference will not occur in a particular installation. If this equipment does cause harmful interference to radio or television reception, which can be determined by turning the equipment off and on, the user is encouraged to try to correct the interference by one or more of the following measures:

- Reorient or relocate the receiving antenna.
- Increase the separation between the equipment and receiver.
- Connect the equipment into an outlet on a circuit different from that to which the receiver is connected.
- Consult the dealer or an experienced radio / TV technician for help.

This device complies with Part 15 of the FCC Rules. Operation is subject to the following two conditions:

(1) this device may not cause harmful interference, and (2) this device must accept any interference received, including interference that may cause undesired operation.

WARNING: Changes or modifications to this unit is not expressly approved by the party responsible for compliance could void the user's authority to operate the equipment.

---

## Know more about Comfier



COMFIER TECHNOLOGY CO.,LTD

Address: 573 BELLEVUE RD NEWARK, DE 19713 USA

Tel: (248) 819-2623 (Monday-Friday 9:00AM-4:30PM)

Facebook: [www.facebook.com/comfiermassager](https://www.facebook.com/comfiermassager)

Email: [supportus@comfier.com](mailto:supportus@comfier.com)

Web: [www.comfier.com](http://www.comfier.com)

---

\*Please provide your order number before contacting customer support