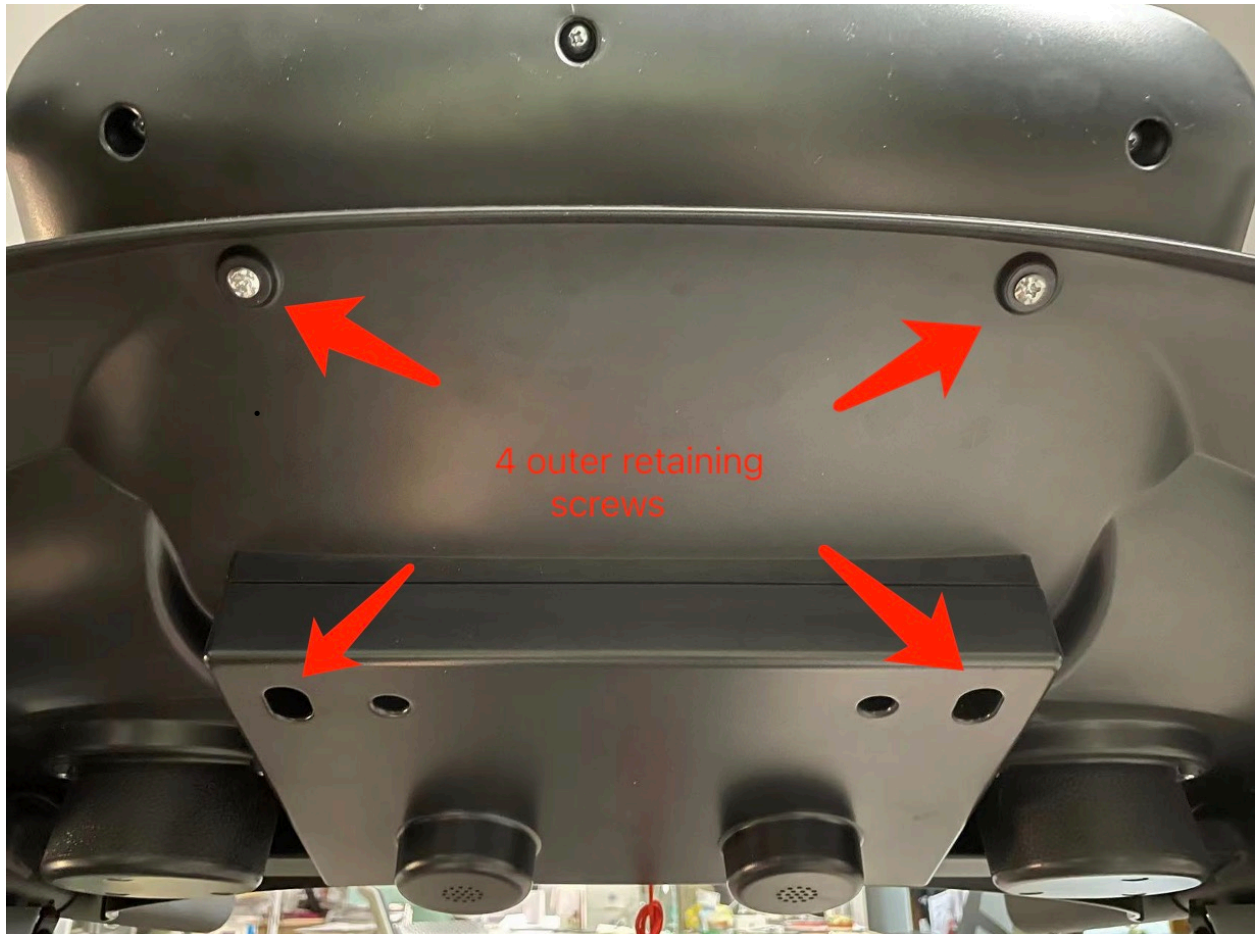


**Ksports Treadmill Model LJJ1001  
Replacement of Display Board  
Dec 20 2022**

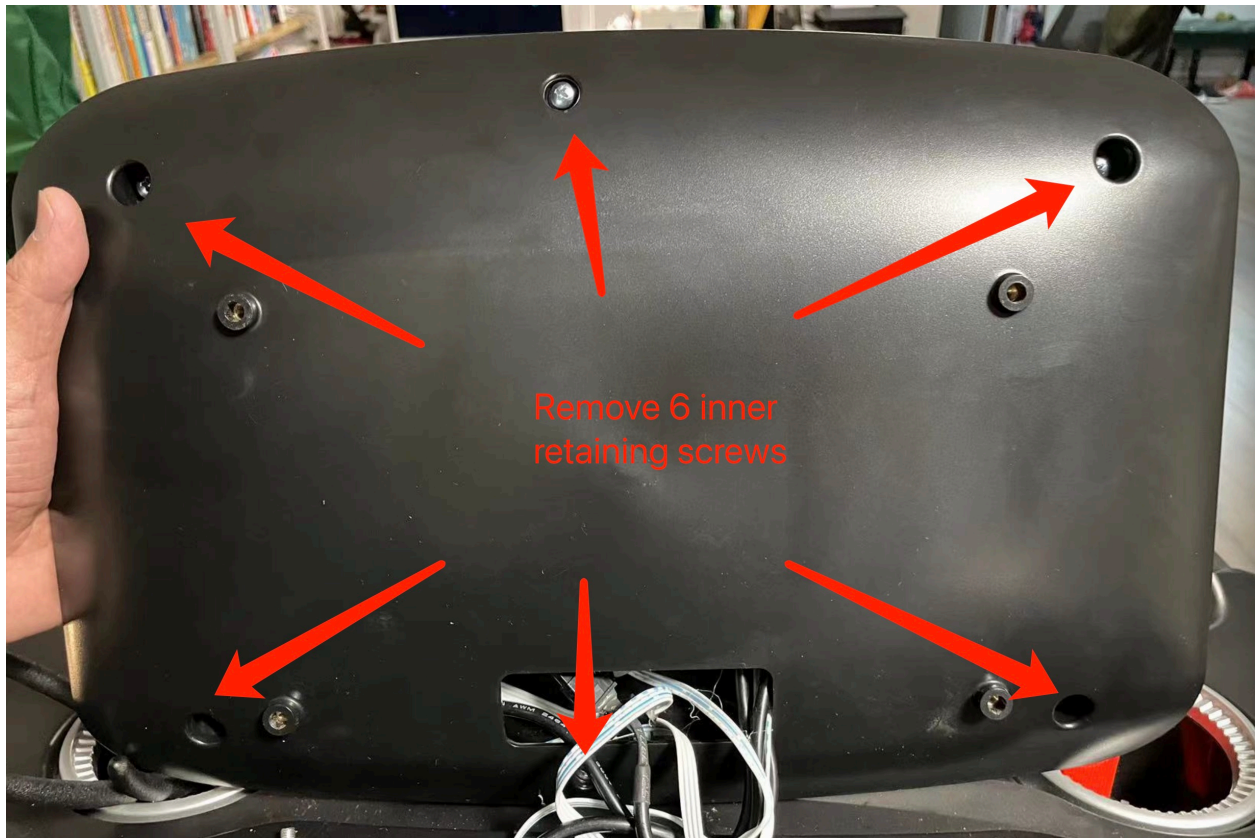
**Step 1**

Remove 4 retaining screws with Phillips screwdriver



**Step 2**

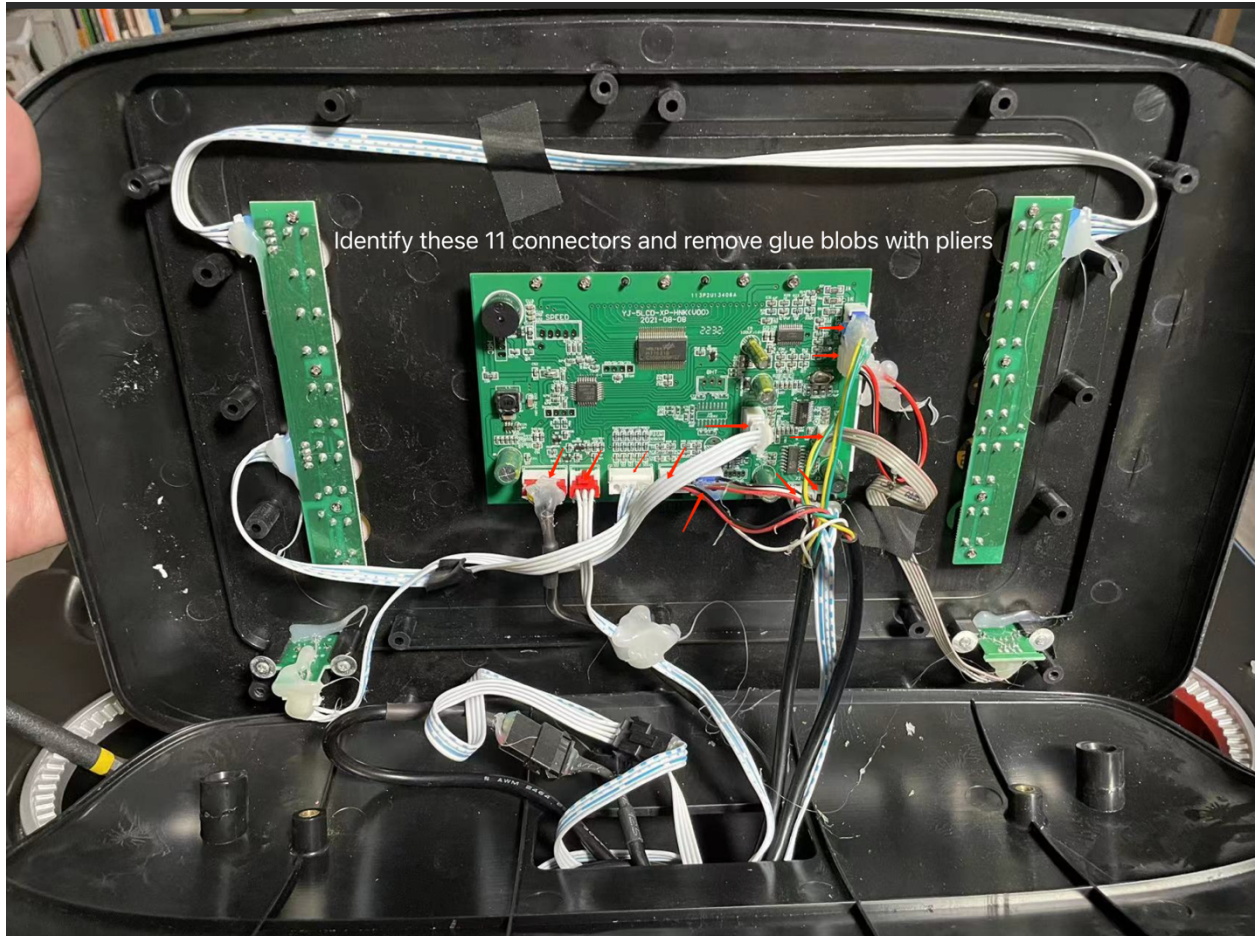
Remove 6 inner retaining screws with Phillips screwdriver



### Step 3

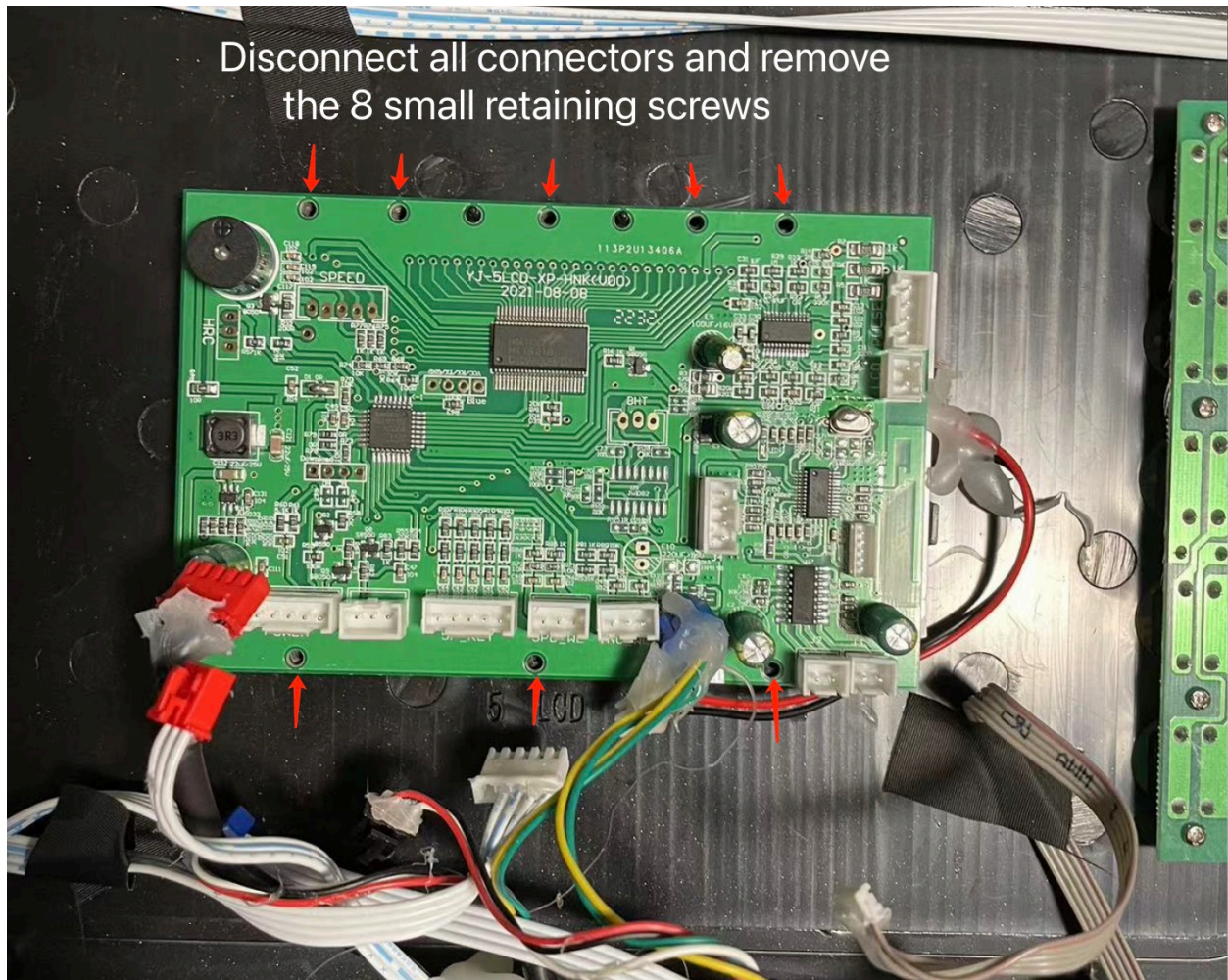
Identify these 11 connectors and remove glue blobs with long nose pliers

Take a several pictures of these connectors with your camera as you disconnect them so you can refer to them when you re connect them on the new circuit board.



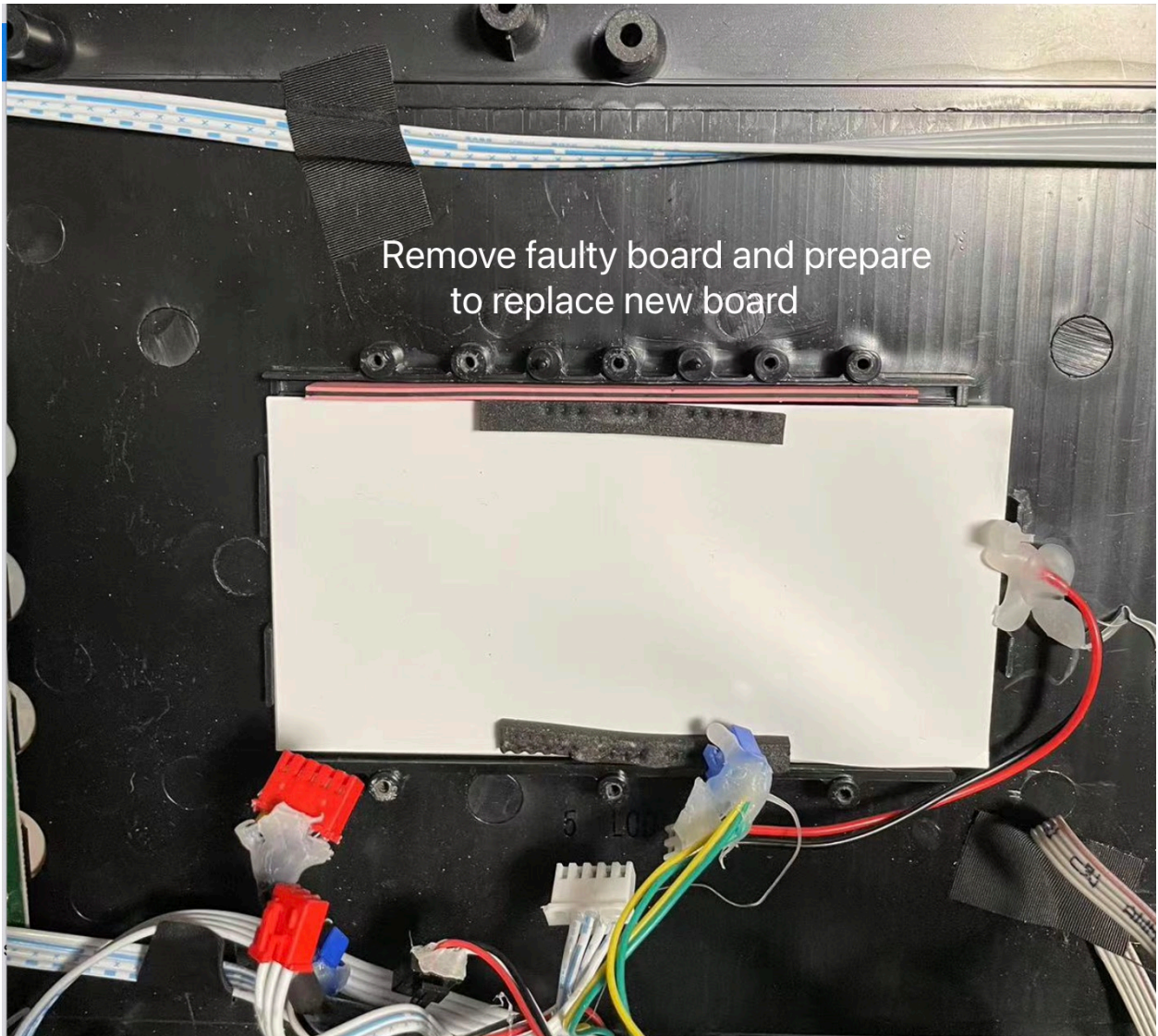
#### Step 4

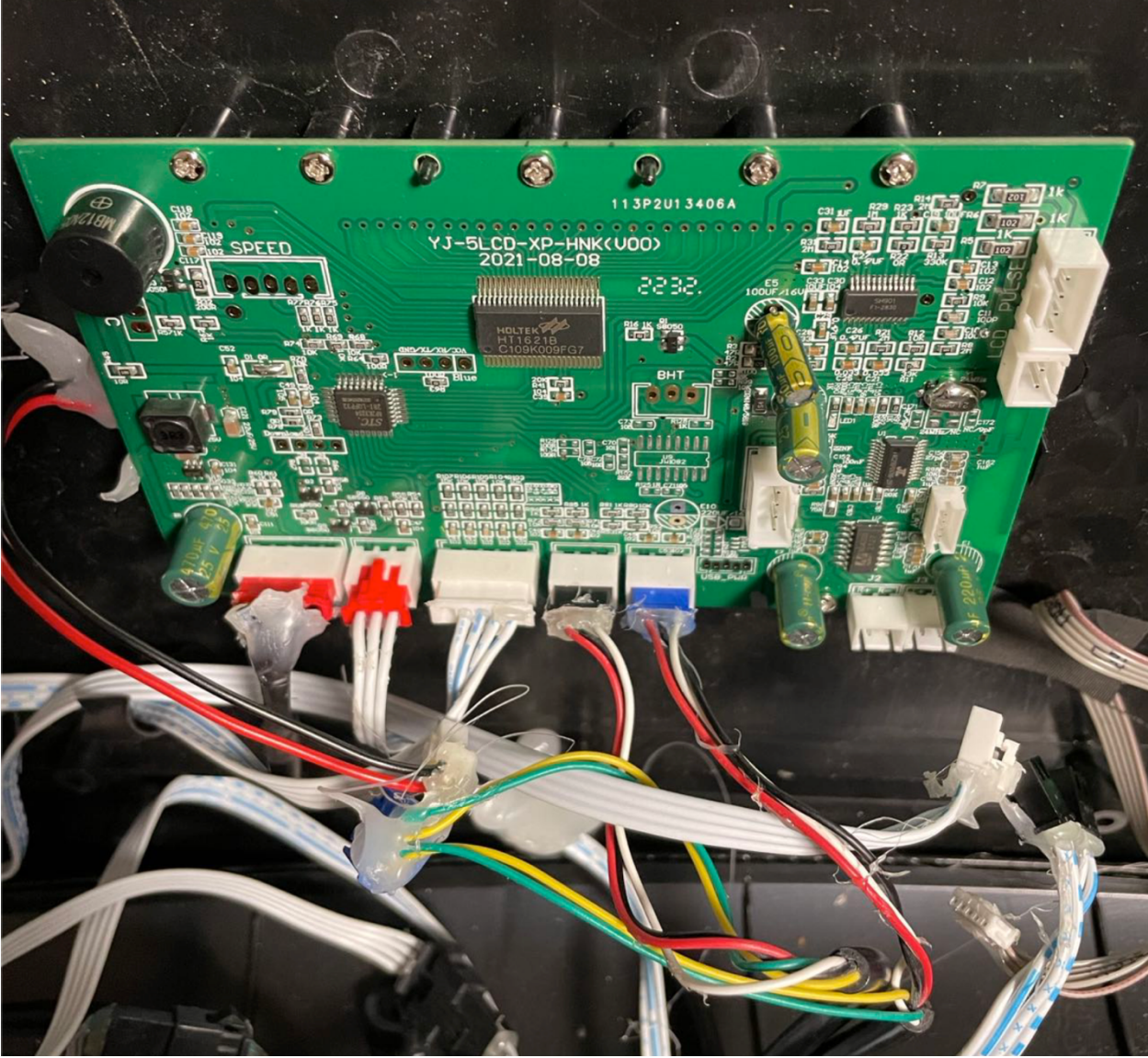
Disconnect all the connectors and remove the 8 small retaining screws



## Step 5

Prepare replacement board and ensure all connectors and screws are secured properly checking with previous photos taken.





## Step 6

Make final checks and ensure nothing has been missed out before you switch the treadmill back on.

