

# DIATONE<sup>®</sup> ROMA F4 LR机架组装示意图

## Longrange ROMA F4 LR Frame Assemble Diagram

作为ROMA系列的首款轻量型设计，ROMA F4 LR长续航机架仅重46g，4inch轻巧便携，搭配18650电池组，最长飞行时长达35分钟。并且装配了GPS模块，长航时远距离飞行不再是大尺寸飞行器专属。同时也兼容了ROMA系列的GoPro可调支架注塑件的安装孔位，增加了通用机型的可玩性。

As the ROMA series' first lightweight design, the ROMA F4 LR long-endurance frame weighs only 46g. It's a light and portable 4-inch design, best flown with a 18650 battery pack to get up to of 35 minutes flight-time. Equip ROMA F4 LR with a GPS module, and long-distance flight is no longer exclusively for large-sized aircrafts. The F4 LR frame is compatible with all injection molded parts in the ROMA series, including the adjustable GoPro mount.

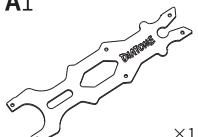
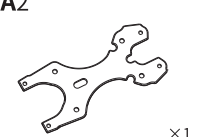
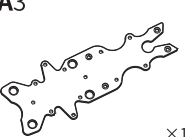
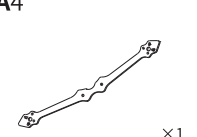
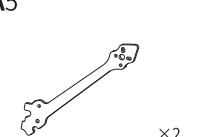
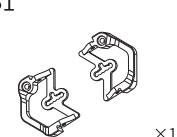
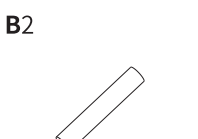
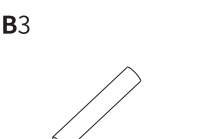
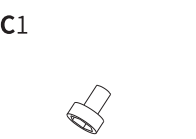

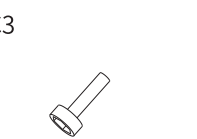
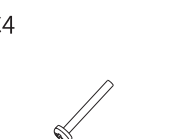
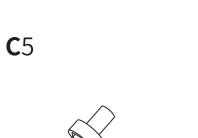

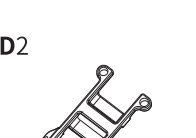
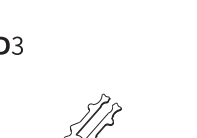
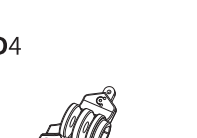
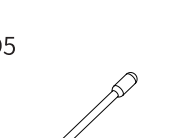
### 产品规格

#### Product Specifications

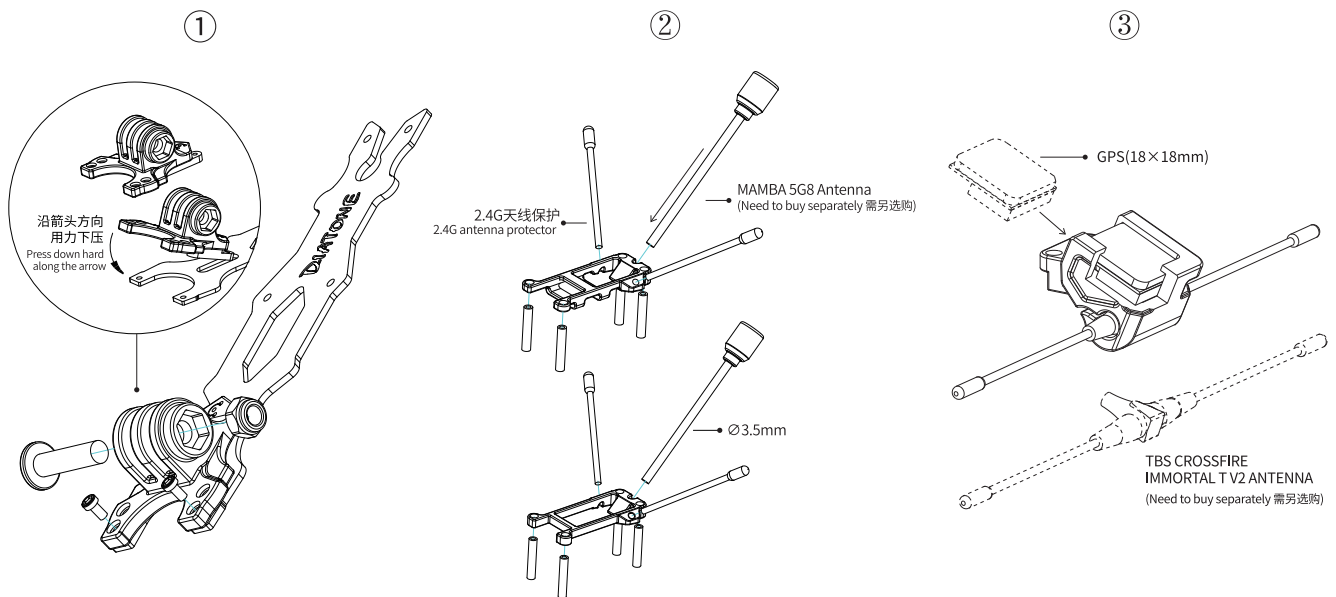
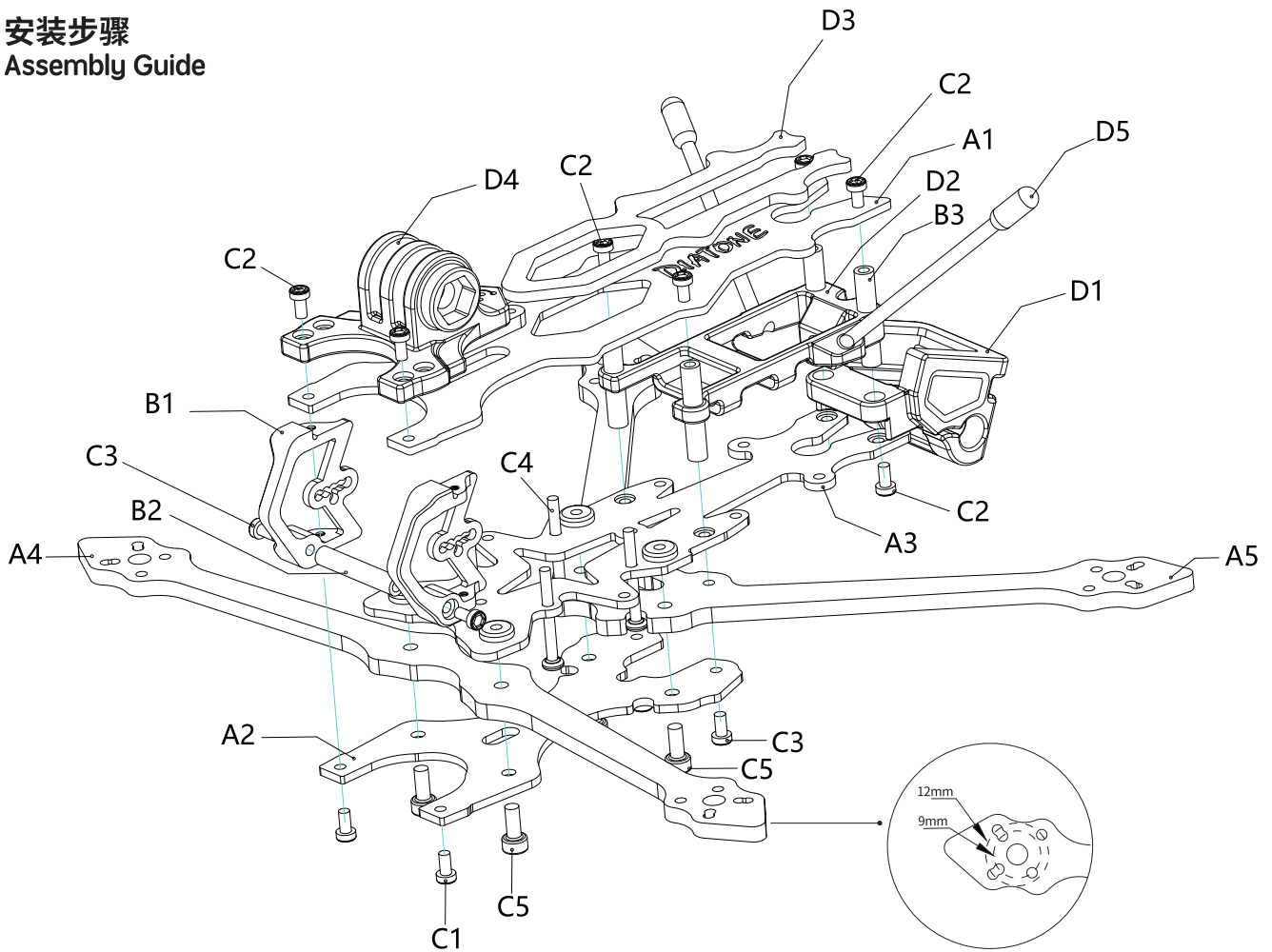
机架类型: 异型	对角轴距: 176mm	机架净重: 46g	上板厚度: 1.5mm
中板厚度: 1.5mm	底板厚度: 1.5mm	机臂厚度: 3mm	机臂宽度: 6.5mm
对角孔距: 9/12mm (M2)	卡簧孔径: $\varnothing 4.5\text{mm}$	设备层高: 20mm	支持最大桨叶: 4inch
摄像头间距: 20mm	推荐电池: 3S~4S	推荐电机: 13-14系列电机	飞控孔距: 20*20 (M2) / 25.5*25.5 (M2)
Frame Shape: Hybrid	Motor to Motor: 176mm	Frame Net Weight: 46g	Top Plate Thickness: 1.5mm
Medium Plate Thickness: 1.5 mm	Bottom Plate Thickness: 1.5mm	Arm Thickness: 3mm	Am Width: 6.5mm
Motor Hole Distance: 9/12mm (M2)	Bore Diameter of Snap Ring: $\varnothing 4.5\text{mm}$	Max Stack Height: 20mm	Supported Prop Size: 4 inch
Camera Spacing: 20mm	Recommended Lipo: 3S-4S	Recommended Motor Size: 13-14 Series motor	
FC Stack Mount: 20*20mm(M2)/25.5*25.5mm(M2)			

### 配件清单

#### Parts list

<b>A1</b>  ×1 顶板 Top plate	<b>A2</b>  ×1 底板 Bottom plate	<b>A3</b>  ×1 中板 Medium plate	<b>A4</b>  ×1 前机臂 Front Arm	<b>A5</b>  ×2 后机臂 Back Arm	<b>B1</b>  ×1 机头铝件 Camera aluminum bracket
<b>B2</b>  ×5 M2x19mm 铝柱 M2x20mm Alum standoff	<b>B3</b>  ×2 M2x20mm 铝柱 M2x20mm Alum standoff	<b>C1</b>  ×6 M2 x4mm 内六角螺丝 M2 x4mm hex screw	<b>C2</b>  ×8 M2 x6mm 内六角螺丝 M2 x6mm hex screw	<b>C3</b>  ×6 M2 x11mm 内六角螺丝 M2 x11mm hex screw	<b>C4</b>  ×6 M2x18mm 十字螺丝 M2x18mm cross screw
<b>C5</b>  ×6 M2.5 x7mm 内六角螺丝 M2.5 x7mm hex screw	<b>D1</b>  ×1 TBS/GPS 打印件 TBS/GPS 3D-printed part	<b>D2</b>  ×1 2.4G天线座打印件 2.4G Antenna 3D Printed Mount	<b>D3</b>  ×1 电池防滑垫 Lipo anti-slip pad	<b>D4</b>  ×1 GoPro 可调座 GoPro adjustable mount	<b>D5</b>  ×2 2.4G天线保护 2.4G antenna protector

# 安装步骤 Assembly Guide



更详细的信息, 可通过访问DIATONE官网获得  
For more information, please refer to the Diatone official website

**DIATONE®**

We provide outstanding service since 2012

Manufacturer : Diatone Innovation Designed by JAH0

Tel : (+86) 0769-82100057 Web : www.diatone.us

Address : Baijiayi Technology Park A-3, Yantian, Fenggang, Dongguan, Guangdong, china