

Note: If the following documents do not solve your problem or if you have any questions, please do not hesitate to contact us

Contact: support@maono.com

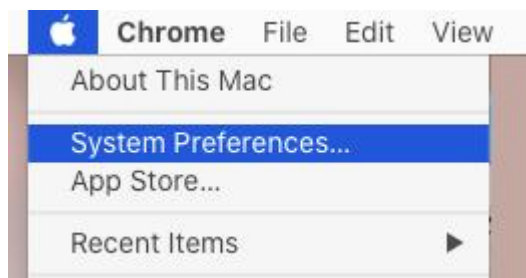
MAONO official website: <https://www.maono.com/>

Facebook: <https://www.facebook.com/maonoglobal>

IG: <https://www.instagram.com/maonoglobal/>

1. Basic computer setup

Step 1: Click on Apple Logo in top-menu bar and select System Preferences in the drop-down menu.

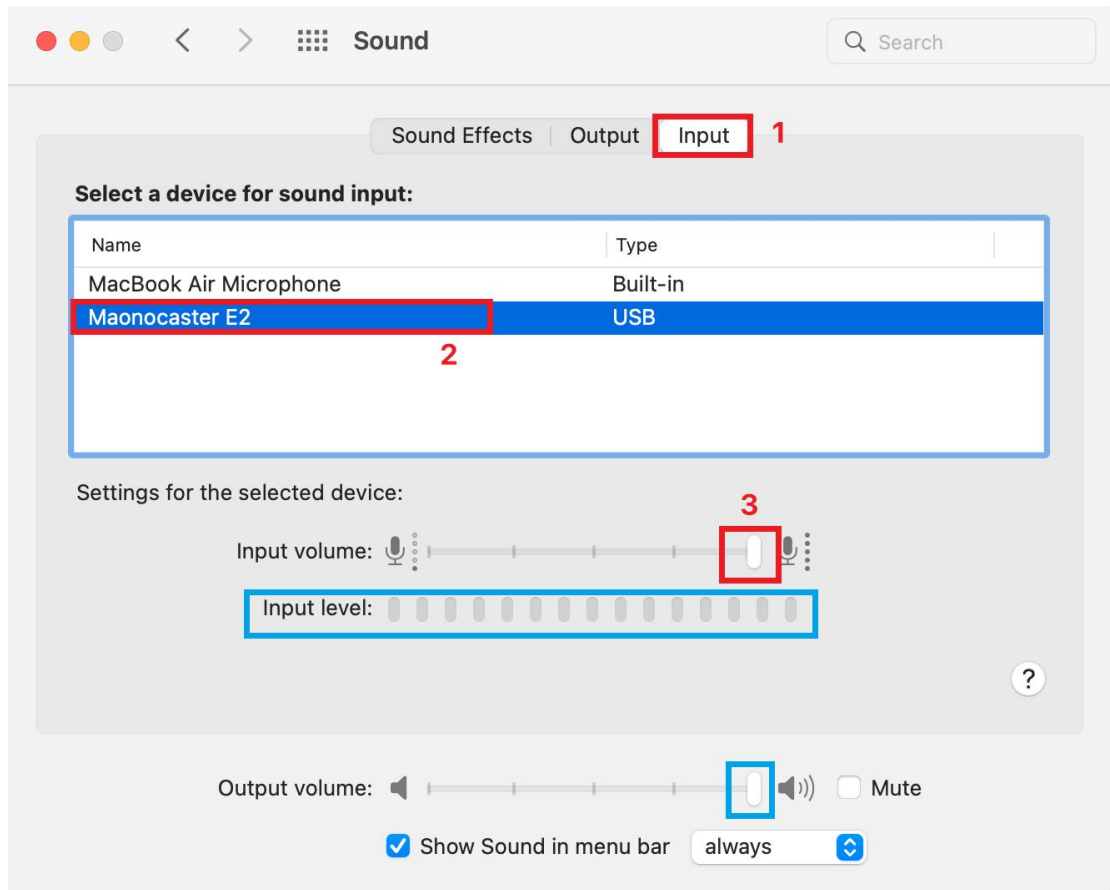


Step 2: On System Preferences screen, click on the Sound tab.

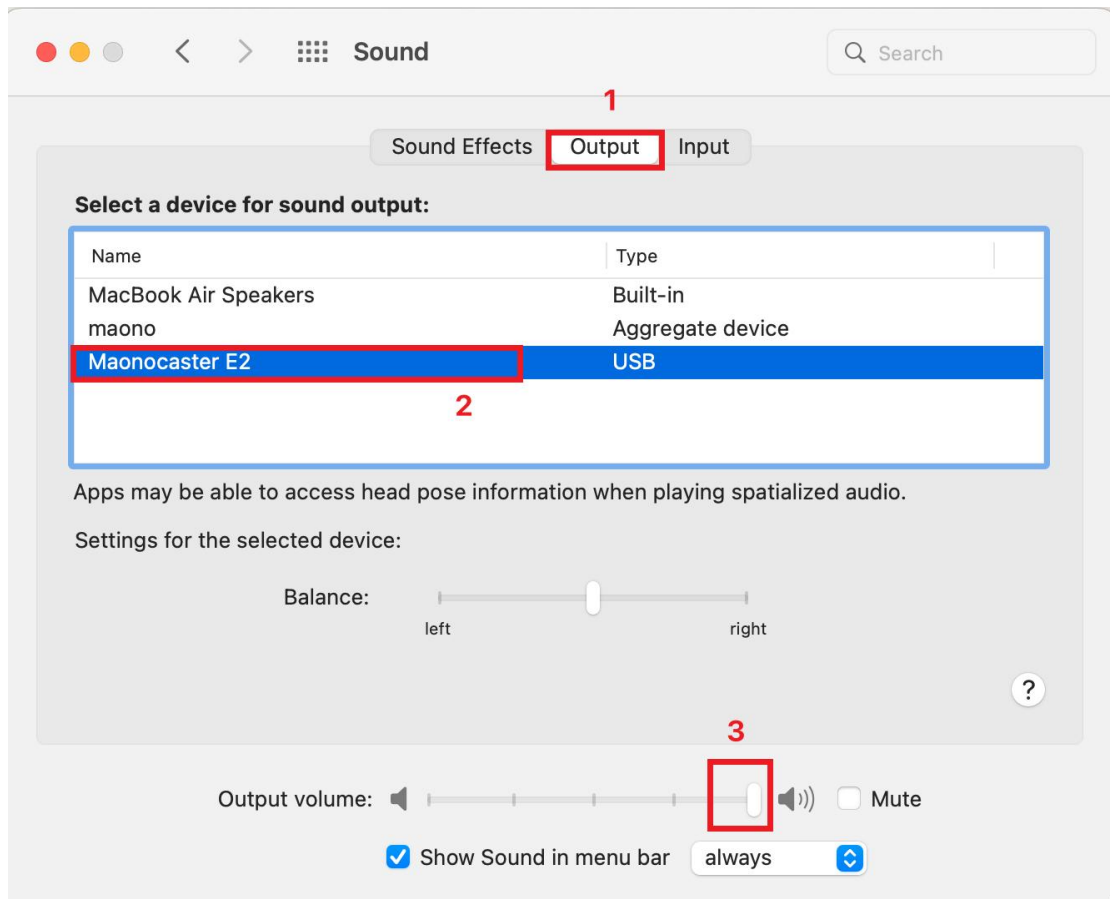


Step 3: On the next screen, switch to Input tab

Select your Maonocaster E2 from the list and make sure the input volume is set to the maximum level.



After setting, input level will show you the input sound level



Click on the output tab

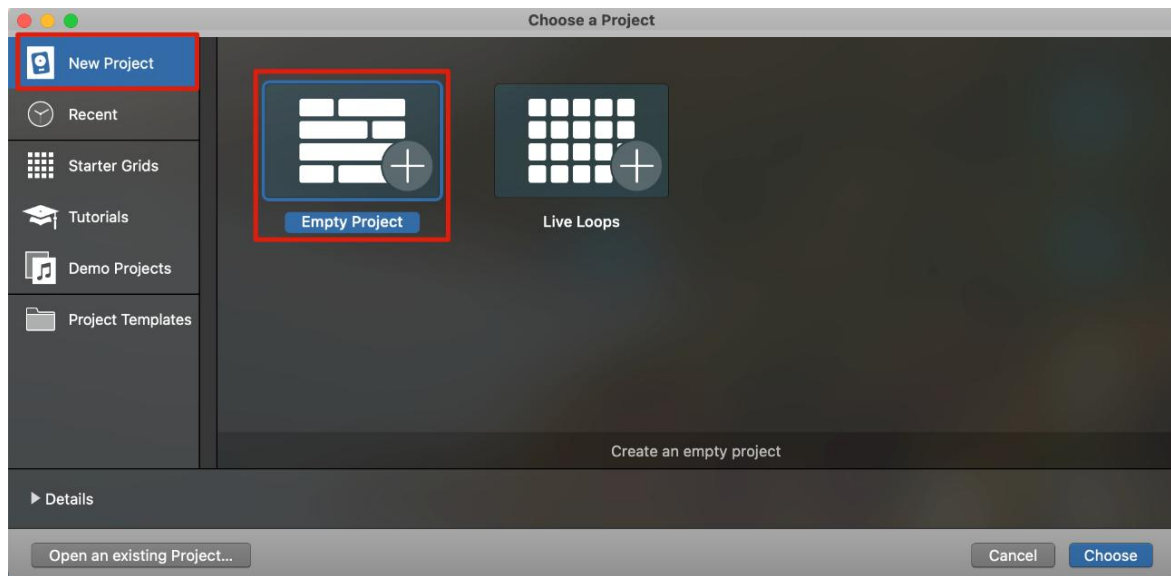
Select Maonocaster E2 as the sound output

Adjust to maximum at output volume level

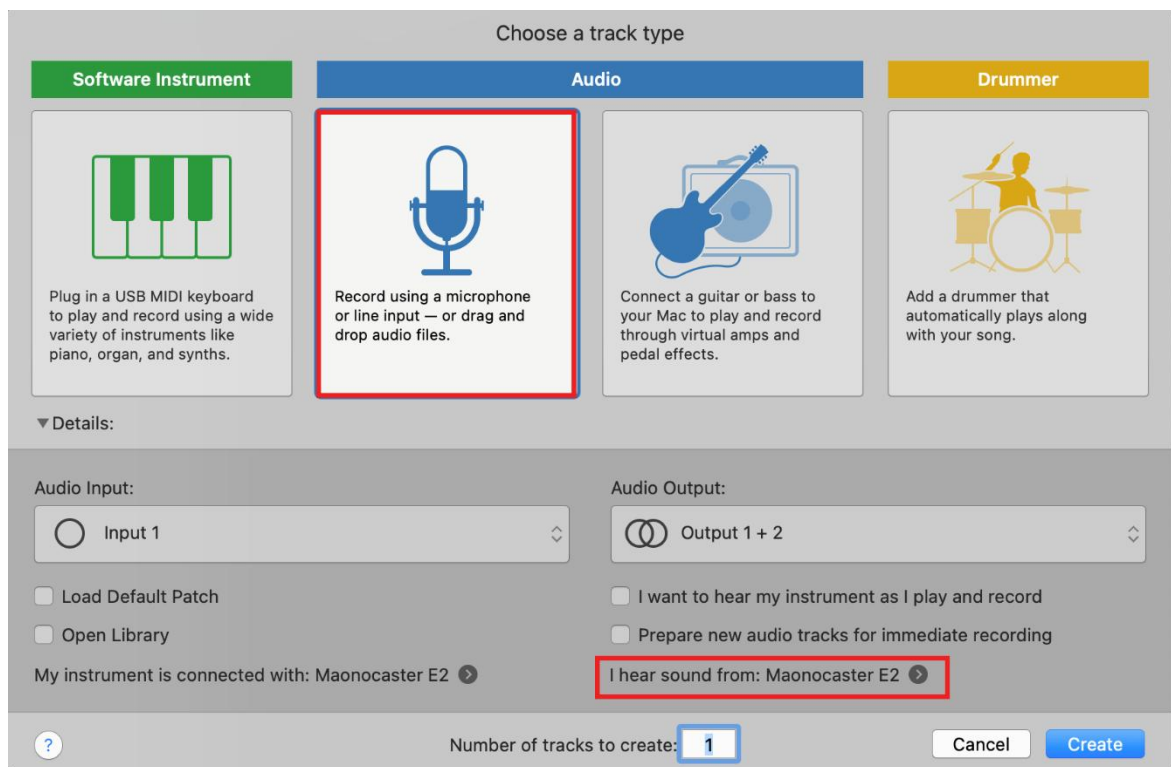
1. Advanced Software Setup

LOGIC PRO

Step 1: Open Logic Pro X and start a new empty project



Step 2: Click on (I hear sound from) to go to the tab

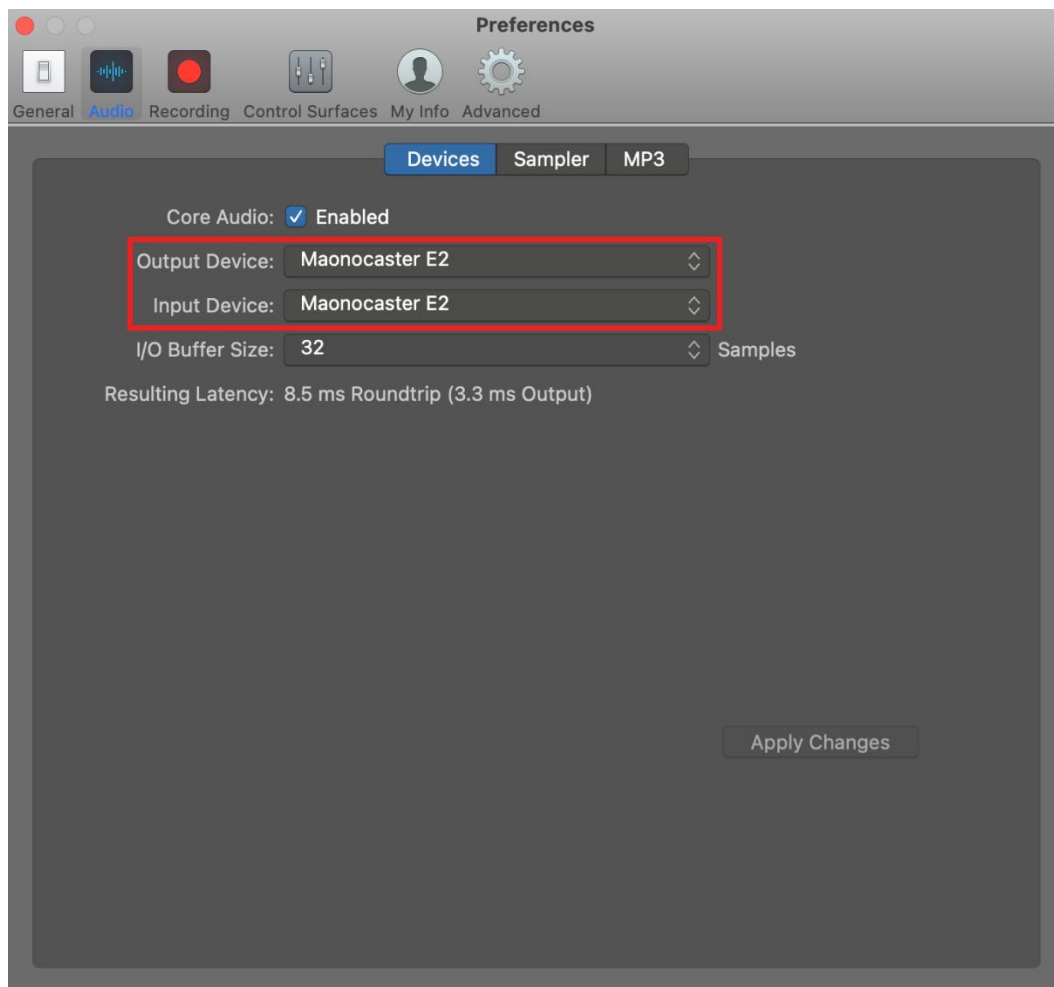


STEP 3: Use Maonocaster E2 for **Output Device** and **Input Device** selection

You can use it after setting

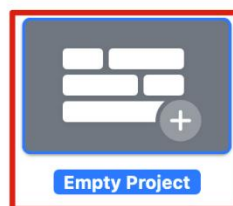
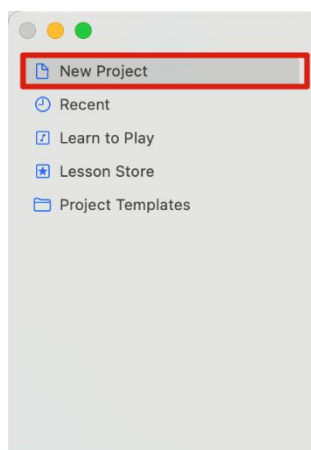


Contact: support@maono.com



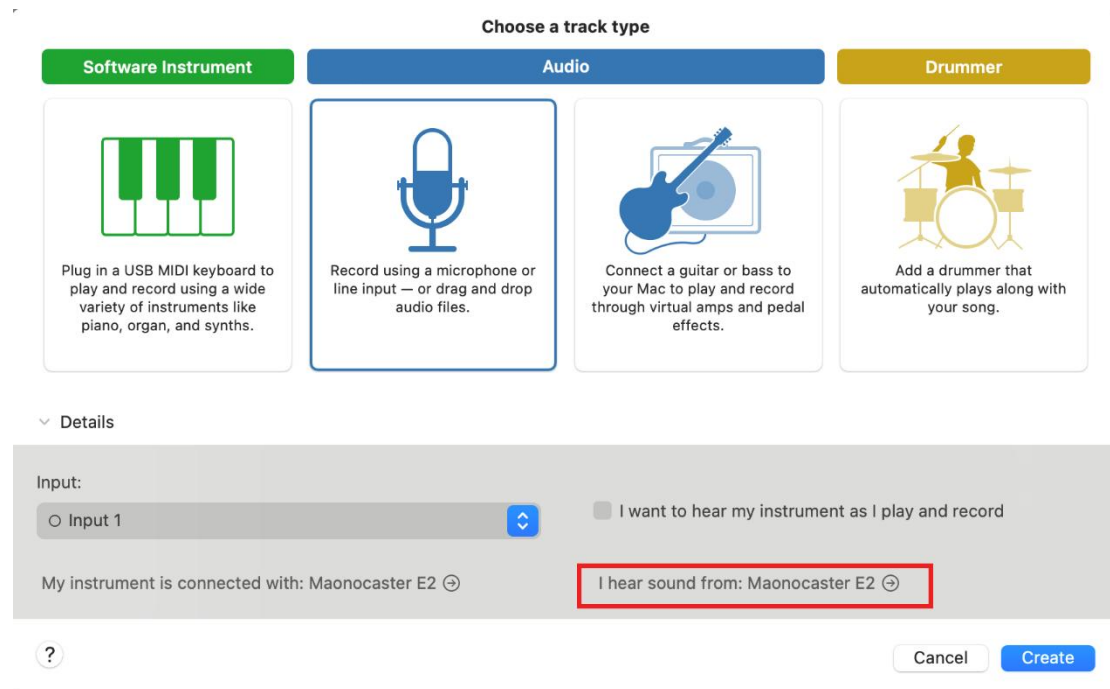
GARAGEBAND:

STEP 1: Open Logic Pro X and start a new empty project



Choose a Project

Step 2: Click on (I hear sound from) to go to the tab



STEP 3: Use Maonocaster E2 for **Output Device** and **Input Device** selection

You can use it after setting

