

Report No.: 18300RC00288401

Test Report


Client Name : SHENZHEN MAONO TECHNOLOGY CO., LTD
Address : 401, Building 47, Software Town of Universiade, No. 8288
Longgang Rd., He'ao Community, Yuanshan Street,
Longgang District, Shenzhen, China
Product Name : podcast console
Date : Oct. 30, 2020



Shenzhen Anbotek Compliance Laboratory Limited

Shenzhen Anbotek Compliance Laboratory Limited

Address: East of 4/F., Building A, Hourui No.3 Industrial Zone, Xixiang Street, Bao'an District,
Shenzhen, Guangdong, China
Tel: (86)755-26066126 Fax: (86)755-26066021 Email: service@anbotek.com

 Hotline
400-003-0500
www.anbotek.com

Test Report

Report No.: 18300RC00288401

Date: Oct. 30, 2020

Page 1 of 29

Applicant : SHENZHEN MAONO TECHNOLOGY CO., LTD
Address : 401, Building 47, Software Town of Universiade, No. 8288 Longgang Rd., He'ao Community, Yuanshan Street, Longgang District, Shenzhen, China

The submitted sample and sample information was/were submitted and identified by/on the behalf of the client

Sample Name : podcast console
Test Model No. : AU-AM200
Reference Model No. : AU-AM100
Supplier : SHENZHEN DING CHUANG SMART MANUFACTURING CO., LTD.
Trade Mark : MAONO
Sample Received Date : July 18, 2020
Testing Period : July 20, 2020 to Oct. 22, 2020

Test Requested : As specified by client, to test the Lead(Pb), Cadmium(Cd), Mercury(Hg), Hexavalent Chromium(Cr(VI)), Polybrominated Biphenyl(PBBs), Polybrominated Diphenyl Ethers (PBDEs), Diisobutyl phthalate (DIBP), Dibutyl phthalate(DBP), Benzyl butyl phthalate(BBP), Di-2-ethylhexyl phthalate(DEHP) in the selected material of submitted sample in accordance with the RoHS Directive 2011/65/EU and amendment Commission Delegated Directive (EU) 2015/863 with effective from 22 July 2019.

Test Method: Please refer to the following page(s).

Test Result(s): Please refer to the following page(s).

Edited by

Nobel Lin

Reviewed by

Shi Kong Yao

Authorized Signatory

Wendy Wang

Test Report

Report No.: 18300RC00288401

Date: Oct. 30, 2020

Page 2 of 29

Test Method:

A. XRF Screening Test

XRF screening limits in mg/kg for regulated elements according to IEC 62321-3-1:2013.

Element	Limit of IEC 62321-3-1:2013 Unit (mg/kg)		
	Polymers	Metals	Composite material
Cd	$BL \leq (70-3\sigma) < X < (130+3\sigma) \leq OL$	$BL \leq (70-3\sigma) < X < (130+3\sigma) \leq OL$	$LOD < X < (150+3\sigma) \leq OL$
Pb	$BL \leq (700-3\sigma) < X < (1300+3\sigma) \leq OL$	$BL \leq (700-3\sigma) < X < (1300+3\sigma) \leq OL$	$BL \leq (500-3\sigma) < X < (1500+3\sigma) \leq OL$
Hg	$BL \leq (700-3\sigma) < X < (1300+3\sigma) \leq OL$	$BL \leq (700-3\sigma) < X < (1300+3\sigma) \leq OL$	$BL \leq (500-3\sigma) < X < (1500+3\sigma) \leq OL$
Br	$BL \leq (300-3\sigma) < X$	N.A.	$BL \leq (250-3\sigma) < X$
Cr	$BL \leq (700-3\sigma) < X$	$BL \leq (700-3\sigma) < X$	$BL \leq (500-3\sigma) < X$

Note:

-N.A. = Not Applicable

-BL = Under the XRF screening limit

-OL = Further chemical test will be conducted while result is above the screening limit

-X= The symbol "X" marks the region where further investigation is necessary

-3σ= The reproducibility of analytical instruments

-LOD= Detection limit

B. Chemical Test

Test Item(s)	Test Method	Measured Equipment(s)	MDL	Limit
Lead (Pb)	IEC 62321-5:2013	ICP-OES	2 mg/kg	1000 mg/kg
Cadmium (Cd)	IEC 62321-5:2013		2 mg/kg	100 mg/kg
Mercury (Hg)	IEC 62321-4:2013+AMD1:2017		2 mg/kg	1000 mg/kg
Hexavalent Chromium Cr(VI)	IEC 62321-7-1:2015	UV-VIS	0.10µg/cm ²	---
	IEC 62321-7-2:2017		8 mg/kg	1000 mg/kg
Polybrominated Biphenyls (PBBs)	IEC 62321-6:2015	GC-MS	5 mg/kg	1000 mg/kg
Polybrominated Diphenyl Ethers (PBDEs)	IEC 62321-6:2015		5 mg/kg	1000 mg/kg
Phthalates (DIBP, DBP, BBP, DEHP)	IEC 62321-8:2017		50 mg/kg	1000 mg/kg

Test Report

Report No.: 18300RC00288401

Date: Oct. 30, 2020

Page 3 of 29

Test Results:

Sample No.	Sample Description	Tested Items	XRF Screening Test	Chemical Test Unit (mg/kg)	Conclusion
1	Black plastic knob	Pb	BL	/	PASS
		Cd	BL	/	
		Hg	BL	/	
		Cr(Cr(VI))	BL	/	
		Br(PBBs&PBDEs)	BL	/	
		DBP	N.A.	N.D.	
		BBP	N.A.	N.D.	
		DEHP	N.A.	N.D.	
2	Black plastic knob	Pb	BL	/	PASS
		Cd	BL	/	
		Hg	BL	/	
		Cr(Cr(VI))	BL	/	
		Br(PBBs&PBDEs)	BL	/	
		DBP	N.A.	N.D.	
		BBP	N.A.	N.D.	
		DEHP	N.A.	N.D.	
3	Black plastic plate	Pb	BL	/	PASS
		Cd	BL	/	
		Hg	BL	/	
		Cr(Cr(VI))	BL	/	
		Br(PBBs&PBDEs)	BL	/	
		DBP	N.A.	N.D.	
		BBP	N.A.	N.D.	
		DEHP	N.A.	N.D.	
		DIBP	N.A.	N.D.	



Test Report

Report No.: 18300RC00288401

Date: Oct. 30, 2020

Page 4 of 29

Sample No.	Sample Description	Tested Items	XRF Screening Test Unit (mg/kg)	Chemical Test Unit (mg/kg)	Conclusion
4	Black plastic button	Pb	BL	/	PASS
		Cd	BL	/	
		Hg	BL	/	
		Cr(Cr(VI))	BL	/	
		Br(PBBs&PBDEs)	BL	/	
		DBP	N.A.	N.D.	
		BBP	N.A.	N.D.	
		DEHP	N.A.	N.D.	
5	White rubber button	Pb	BL	/	PASS
		Cd	BL	/	
		Hg	BL	/	
		Cr(Cr(VI))	BL	/	
		Br(PBBs&PBDEs)	BL	/	
		DBP	N.A.	N.D.	
		BBP	N.A.	N.D.	
		DEHP	N.A.	N.D.	
6	Rubber button with black coating	Pb	BL	/	PASS
		Cd	BL	/	
		Hg	BL	/	
		Cr(Cr(VI))	BL	/	
		Br(PBBs&PBDEs)	BL	/	
		DBP	N.A.	N.D.	
		BBP	N.A.	N.D.	
		DEHP	N.A.	N.D.	
DIBP	N.A.	N.D.			



Test Report

Report No.: 18300RC00288401

Date: Oct. 30, 2020

Page 5 of 29

Sample No.	Sample Description	Tested Items	XRF Screening Test Unit (mg/kg)	Chemical Test Unit (mg/kg)	Conclusion
7	Black plastic shell	Pb	BL	/	PASS
		Cd	BL	/	
		Hg	BL	/	
		Cr(Cr(VI))	BL	/	
		Br(PBBs&PBDEs)	BL	/	
		DBP	N.A.	N.D.	
		BBP	N.A.	N.D.	
		DEHP	N.A.	N.D.	
8	Black rubber foot pad	Pb	BL	/	PASS
		Cd	BL	/	
		Hg	BL	/	
		Cr(Cr(VI))	BL	/	
		Br(PBBs&PBDEs)	BL	/	
		DBP	N.A.	N.D.	
		BBP	N.A.	N.D.	
		DEHP	N.A.	N.D.	
9	Silvery metal screw	Pb	BL	/	PASS
		Cd	BL	/	
		Hg	BL	/	
		Cr(Cr(VI))	BL	/	
		Br(PBBs&PBDEs)	N.A.	/	
		DBP	N.A.	/	
		BBP	N.A.	/	
		DEHP	N.A.	/	
		DIBP	N.A.	/	



Test Report

Report No.: 18300RC00288401

Date: Oct. 30, 2020

Page 6 of 29

Sample No.	Sample Description	Tested Items	XRF Screening Test Unit (mg/kg)	Chemical Test Unit (mg/kg)	Conclusion
10	Black plastic button	Pb	BL	/	PASS
		Cd	BL	/	
		Hg	BL	/	
		Cr(Cr(VI))	BL	/	
		Br(PBBs&PBDEs)	BL	/	
		DBP	N.A.	N.D.	
		BBP	N.A.	N.D.	
		DEHP	N.A.	N.D.	
11	Black plastic shell	Pb	BL	/	PASS
		Cd	BL	/	
		Hg	BL	/	
		Cr(Cr(VI))	BL	/	
		Br(PBBs&PBDEs)	BL	/	
		DBP	N.A.	N.D.	
		BBP	N.A.	N.D.	
		DEHP	N.A.	N.D.	
12	Black plastic pole	Pb	BL	/	PASS
		Cd	BL	/	
		Hg	BL	/	
		Cr(Cr(VI))	BL	/	
		Br(PBBs&PBDEs)	BL	/	
		DBP	N.A.	N.D.	
		BBP	N.A.	N.D.	
		DEHP	N.A.	N.D.	
DIBP	N.A.	N.D.			



Test Report

Report No.: 18300RC00288401

Date: Oct. 30, 2020

Page 7 of 29

Sample No.	Sample Description	Tested Items	XRF Screening Test Unit (mg/kg)	Chemical Test Unit (mg/kg)	Conclusion
13	Silvery metal cover	Pb	BL	/	PASS
		Cd	BL	/	
		Hg	BL	/	
		Cr(Cr(VI))	BL	/	
		Br(PBBs&PBDEs)	N.A.	/	
		DBP	N.A.	/	
		BBP	N.A.	/	
		DEHP	N.A.	/	
14	Silvery metal spring	Pb	BL	/	PASS
		Cd	BL	/	
		Hg	BL	/	
		Cr(Cr(VI))	BL	/	
		Br(PBBs&PBDEs)	N.A.	/	
		DBP	N.A.	/	
		BBP	N.A.	/	
		DEHP	N.A.	/	
15	Silvery metal shell	Pb	BL	/	PASS
		Cd	BL	/	
		Hg	BL	/	
		Cr(Cr(VI))	BL	/	
		Br(PBBs&PBDEs)	N.A.	/	
		DBP	N.A.	/	
		BBP	N.A.	/	
		DEHP	N.A.	/	
DIBP	N.A.	/			



Test Report

Report No.: 18300RC00288401

Date: Oct. 30, 2020

Page 8 of 29

Sample No.	Sample Description	Tested Items	XRF Screening Test Unit (mg/kg)	Chemical Test Unit (mg/kg)	Conclusion
16	White plastic pedestal	Pb	BL	/	PASS
		Cd	BL	/	
		Hg	BL	/	
		Cr(Cr(VI))	BL	/	
		Br(PBBs&PBDEs)	BL	/	
		DBP	N.A.	N.D.	
		BBP	N.A.	N.D.	
		DEHP	N.A.	N.D.	
17	IC	Pb	BL	/	PASS
		Cd	BL	/	
		Hg	BL	/	
		Cr(Cr(VI))	BL	/	
		Br(PBBs&PBDEs)	BL	/	
		DBP	N.A.	N.D.	
		BBP	N.A.	N.D.	
		DEHP	N.A.	N.D.	
18	Metal plate with black coating	Pb	BL	/	PASS
		Cd	BL	/	
		Hg	BL	/	
		Cr(Cr(VI))	BL	/	
		Br(PBBs&PBDEs)	N.A.	/	
		DBP	N.A.	/	
		BBP	N.A.	/	
		DEHP	N.A.	/	
DIBP	N.A.	/			



Test Report

Report No.: 18300RC00288401

Date: Oct. 30, 2020

Page 9 of 29

Sample No.	Sample Description	Tested Items	XRF Screening Test Unit (mg/kg)	Chemical Test Unit (mg/kg)	Conclusion
19	Black gummed paper	Pb	BL	/	PASS
		Cd	BL	/	
		Hg	BL	/	
		Cr(Cr(VI))	BL	/	
		Br(PBBs&PBDEs)	BL	/	
		DBP	N.A.	N.D.	
		BBP	N.A.	N.D.	
		DEHP	N.A.	N.D.	
20	Black plastic pedestal	Pb	BL	/	PASS
		Cd	BL	/	
		Hg	BL	/	
		Cr(Cr(VI))	BL	/	
		Br(PBBs&PBDEs)	BL	/	
		DBP	N.A.	N.D.	
		BBP	N.A.	N.D.	
		DEHP	N.A.	N.D.	
21	Chip capacitor	Pb	BL	/	PASS
		Cd	BL	/	
		Hg	BL	/	
		Cr(Cr(VI))	BL	/	
		Br(PBBs&PBDEs)	BL	/	
		DBP	N.A.	N.D.	
		BBP	N.A.	N.D.	
		DEHP	N.A.	N.D.	
DIBP	N.A.	N.D.			



Test Report

Report No.: 18300RC00288401

Date: Oct. 30, 2020

Page 10 of 29

Sample No.	Sample Description	Tested Items	XRF Screening Test Unit (mg/kg)	Chemical Test Unit (mg/kg)	Conclusion
22	Chip resistor	Pb	BL	/	PASS
		Cd	BL	/	
		Hg	BL	/	
		Cr(Cr(VI))	BL	/	
		Br(PBBs&PBDEs)	BL	/	
		DBP	N.A.	N.D.	
		BBP	N.A.	N.D.	
		DEHP	N.A.	N.D.	
23	Chip audion	Pb	BL	/	PASS
		Cd	BL	/	
		Hg	BL	/	
		Cr(Cr(VI))	BL	/	
		Br(PBBs&PBDEs)	BL	/	
		DBP	N.A.	N.D.	
		BBP	N.A.	N.D.	
		DEHP	N.A.	N.D.	
24	Crystal oscillator	Pb	BL	/	PASS
		Cd	BL	/	
		Hg	BL	/	
		Cr(Cr(VI))	BL	/	
		Br(PBBs&PBDEs)	N.A.	/	
		DBP	N.A.	/	
		BBP	N.A.	/	
		DEHP	N.A.	/	
		DIBP	N.A.	/	



Test Report

Report No.: 18300RC00288401

Date: Oct. 30, 2020

Page 11 of 29

Sample No.	Sample Description	Tested Items	XRF Screening Test Unit (mg/kg)	Chemical Test Unit (mg/kg)	Conclusion
25	Silvery metal shell	Pb	BL	/	PASS
		Cd	BL	/	
		Hg	BL	/	
		Cr(Cr(VI))	BL	/	
		Br(PBBs&PBDEs)	N.A.	/	
		DBP	N.A.	/	
		BBP	N.A.	/	
		DEHP	N.A.	/	
26	Black electrolytic capacitor scarfskin	Pb	BL	/	PASS
		Cd	BL	/	
		Hg	BL	/	
		Cr(Cr(VI))	BL	/	
		Br(PBBs&PBDEs)	BL	/	
		DBP	N.A.	N.D.	
		BBP	N.A.	N.D.	
		DEHP	N.A.	N.D.	
27	Black foam gummed sticker	Pb	BL	/	PASS
		Cd	BL	/	
		Hg	BL	/	
		Cr(Cr(VI))	BL	/	
		Br(PBBs&PBDEs)	BL	/	
		DBP	N.A.	N.D.	
		BBP	N.A.	N.D.	
		DEHP	N.A.	N.D.	
DIBP	N.A.	N.D.			



Test Report

Report No.: 18300RC00288401

Date: Oct. 30, 2020

Page 12 of 29

Sample No.	Sample Description	Tested Items	XRF Screening Test Unit (mg/kg)	Chemical Test Unit (mg/kg)	Conclusion
28	PCB board	Pb	BL	/	PASS
		Cd	BL	/	
		Hg	BL	/	
		Cr(Cr(VI))	BL	/	
		Br(PBBs&PBDEs)	X	N.D.	
		DBP	N.A.	N.D.	
		BBP	N.A.	N.D.	
		DEHP	N.A.	N.D.	
29▼	Soldering tin	Pb	BL	/	PASS
		Cd	BL	/	
		Hg	BL	/	
		Cr(Cr(VI))	BL	/	
		Br(PBBs&PBDEs)	N.A.	/	
		DBP	N.A.	/	
		BBP	N.A.	/	
		DEHP	N.A.	/	
30▼	Black plastic jacket	Pb	BL	/	PASS
		Cd	BL	/	
		Hg	BL	/	
		Cr(Cr(VI))	BL	/	
		Br(PBBs&PBDEs)	BL	/	
		DBP	N.A.	N.D.	
		BBP	N.A.	N.D.	
		DEHP	N.A.	N.D.	
DIBP	N.A.	N.D.			



Test Report

Report No.: 18300RC00288401

Date: Oct. 30, 2020

Page 13 of 29

Sample No.	Sample Description	Tested Items	XRF Screening Test Unit (mg/kg)	Chemical Test Unit (mg/kg)	Conclusion
31▼	Red plastic jacket	Pb	BL	/	PASS
		Cd	BL	/	
		Hg	BL	/	
		Cr(Cr(VI))	BL	/	
		Br(PBBs&PBDEs)	BL	/	
		DBP	N.A.	N.D.	
		BBP	N.A.	N.D.	
		DEHP	N.A.	N.D.	
32	Black plastic line set	Pb	BL	/	PASS
		Cd	BL	/	
		Hg	BL	/	
		Cr(Cr(VI))	BL	/	
		Br(PBBs&PBDEs)	BL	/	
		DBP	N.A.	N.D.	
		BBP	N.A.	N.D.	
		DEHP	N.A.	N.D.	
33▼	Black plastic scarfskin	Pb	BL	/	PASS
		Cd	BL	/	
		Hg	BL	/	
		Cr(Cr(VI))	BL	/	
		Br(PBBs&PBDEs)	BL	/	
		DBP	N.A.	N.D.	
		BBP	N.A.	N.D.	
		DEHP	N.A.	N.D.	
DIBP	N.A.	N.D.			



Test Report

Report No.: 18300RC00288401

Date: Oct. 30, 2020

Page 14 of 29

Sample No.	Sample Description	Tested Items	XRF Screening Test Unit (mg/kg)	Chemical Test Unit (mg/kg)	Conclusion
34	Copper-colored metal pole	Pb	OL	29510*	PASS
		Cd	BL	/	
		Hg	BL	/	
		Cr(Cr(VI))	BL	/	
		Br(PBBs&PBDEs)	N.A.	/	
		DBP	N.A.	/	
		BBP	N.A.	/	
		DEHP	N.A.	/	
35	Red plastic jacket	Pb	BL	/	PASS
		Cd	BL	/	
		Hg	BL	/	
		Cr(Cr(VI))	BL	/	
		Br(PBBs&PBDEs)	BL	/	
		DBP	N.A.	N.D.	
		BBP	N.A.	N.D.	
		DEHP	N.A.	N.D.	
36	Green plastic jacket	Pb	BL	/	PASS
		Cd	BL	/	
		Hg	BL	/	
		Cr(Cr(VI))	BL	/	
		Br(PBBs&PBDEs)	BL	/	
		DBP	N.A.	N.D.	
		BBP	N.A.	N.D.	
		DEHP	N.A.	N.D.	
DIBP	N.A.	N.D.			



Test Report

Report No.: 18300RC00288401

Date: Oct. 30, 2020

Page 15 of 29

Sample No.	Sample Description	Tested Items	XRF Screening Test Unit (mg/kg)	Chemical Test Unit (mg/kg)	Conclusion
37	White plastic jacket	Pb	BL	/	PASS
		Cd	BL	/	
		Hg	BL	/	
		Cr(Cr(VI))	BL	/	
		Br(PBBs&PBDEs)	BL	/	
		DBP	N.A.	N.D.	
		BBP	N.A.	N.D.	
		DEHP	N.A.	N.D.	
38	Black plastic scarfskin	Pb	BL	/	PASS
		Cd	BL	/	
		Hg	BL	/	
		Cr(Cr(VI))	BL	/	
		Br(PBBs&PBDEs)	BL	/	
		DBP	N.A.	N.D.	
		BBP	N.A.	N.D.	
		DEHP	N.A.	N.D.	
39	Silvery metal shell	Pb	BL	/	PASS
		Cd	BL	/	
		Hg	BL	/	
		Cr(Cr(VI))	BL	/	
		Br(PBBs&PBDEs)	N.A.	/	
		DBP	N.A.	/	
		BBP	N.A.	/	
		DEHP	N.A.	/	
DIBP	N.A.	/			



Test Report

Report No.: 18300RC00288401

Date: Oct. 30, 2020

Page 16 of 29

Sample No.	Sample Description	Tested Items	XRF Screening Test Unit (mg/kg)	Chemical Test Unit (mg/kg)	Conclusion
40	Red plastic jacket	Pb	BL	/	PASS
		Cd	BL	/	
		Hg	BL	/	
		Cr(Cr(VI))	BL	/	
		Br(PBBs&PBDEs)	BL	/	
		DBP	N.A.	N.D.	
		BBP	N.A.	N.D.	
		DEHP	N.A.	N.D.	
41	Green plastic jacket	Pb	BL	/	PASS
		Cd	BL	/	
		Hg	BL	/	
		Cr(Cr(VI))	BL	/	
		Br(PBBs&PBDEs)	BL	/	
		DBP	N.A.	N.D.	
		BBP	N.A.	N.D.	
		DEHP	N.A.	N.D.	
42	Black plastic jacket	Pb	BL	/	PASS
		Cd	BL	/	
		Hg	BL	/	
		Cr(Cr(VI))	BL	/	
		Br(PBBs&PBDEs)	BL	/	
		DBP	N.A.	N.D.	
		BBP	N.A.	N.D.	
		DEHP	N.A.	N.D.	
		DIBP	N.A.	N.D.	

Test Report

Report No.: 18300RC00288401

Date: Oct. 30, 2020

Page 17 of 29

Sample No.	Sample Description	Tested Items	XRF Screening Test Unit (mg/kg)	Chemical Test Unit (mg/kg)	Conclusion
43	White plastic jacket	Pb	BL	/	PASS
		Cd	BL	/	
		Hg	BL	/	
		Cr(Cr(VI))	BL	/	
		Br(PBBs&PBDEs)	BL	/	
		DBP	N.A.	N.D.	
		BBP	N.A.	N.D.	
		DEHP	N.A.	N.D.	
44	Black plastic line set	Pb	BL	/	PASS
		Cd	BL	/	
		Hg	BL	/	
		Cr(Cr(VI))	BL	/	
		Br(PBBs&PBDEs)	BL	/	
		DBP	N.A.	N.D.	
		BBP	N.A.	N.D.	
		DEHP	N.A.	145	
45	Black plastic scarfskin	Pb	BL	/	PASS
		Cd	BL	/	
		Hg	BL	/	
		Cr(Cr(VI))	BL	/	
		Br(PBBs&PBDEs)	BL	/	
		DBP	N.A.	N.D.	
		BBP	N.A.	N.D.	
		DEHP	N.A.	N.D.	
DIBP	N.A.	N.D.			



Test Report

Report No.: 18300RC00288401

Date: Oct. 30, 2020

Page 18 of 29

Sample No.	Sample Description	Tested Items	XRF Screening Test Unit (mg/kg)	Chemical Test Unit (mg/kg)	Conclusion
46	Silvery metal shell	Pb	BL	/	PASS
		Cd	BL	/	
		Hg	BL	/	
		Cr(Cr(VI))	BL	/	
		Br(PBBs&PBDEs)	N.A.	/	
		DBP	N.A.	/	
		BBP	N.A.	/	
		DEHP	N.A.	/	
		DIBP	N.A.	/	

Note:

- The screening results are only used for reference.
- When conducting the test for PBBs&PBDEs, XRF was introduced to screen Br Exclusively; When conducting the test for Hexavalent Chromium, XRF was introduced to screen Chromium exclusively.
- BL = Under the XRF screening limit
- OL = Further chemical test will be conducted while result is above the screening limit
- X= The symbol "X" marks the region where further investigation is necessary
- LOD= Detection limit
- MDL = Method Detection Limit
- N.A. = Not Applicable
- N.D. = Not Detected (<MDL)
- /=Not tested
- mg/kg = ppm = parts per million
- $\mu\text{g}/\text{cm}^2$ = microgramme per square centimetre
- "___"=
 - a. -Negative = Absence of Cr(VI) , the detected Cr(VI) concentration in the boiling water extraction solution is less than $0.10\mu\text{g}/\text{cm}^2$.
 - b. -Positive = Presence of Cr(VI), the detected Cr(VI) concentration in the boiling water extraction solution is equal to or greater than $0.13\mu\text{g}/\text{cm}^2$.
 - c. The result between is $0.10\mu\text{g}/\text{cm}^2$ and $0.13\mu\text{g}/\text{cm}^2$ is considered to be inconclusive-unavoidable coating variations may influence the determination.
- *= According to the product specification provided from client, the submitted sample of specimen No. 34 is copper alloy containing up to 4% Lead by weight which is exempted by RoHS regulatory (Directive 2011/65/EU of The European Parliament and of The Council of 8 June 2011).
- ▽=The resubmitted date of test sample 29, 30 and 31 is Aug. 26, 2020 and test sample 33 is Oct. 20,

Test Report

Report No.: 18300RC00288401

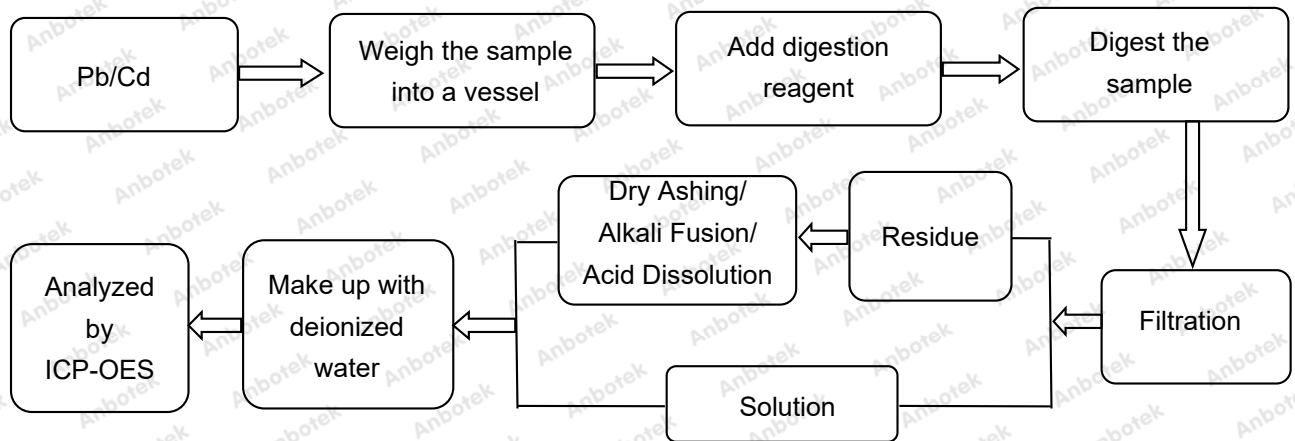
Date: Oct. 30, 2020

Page 19 of 29

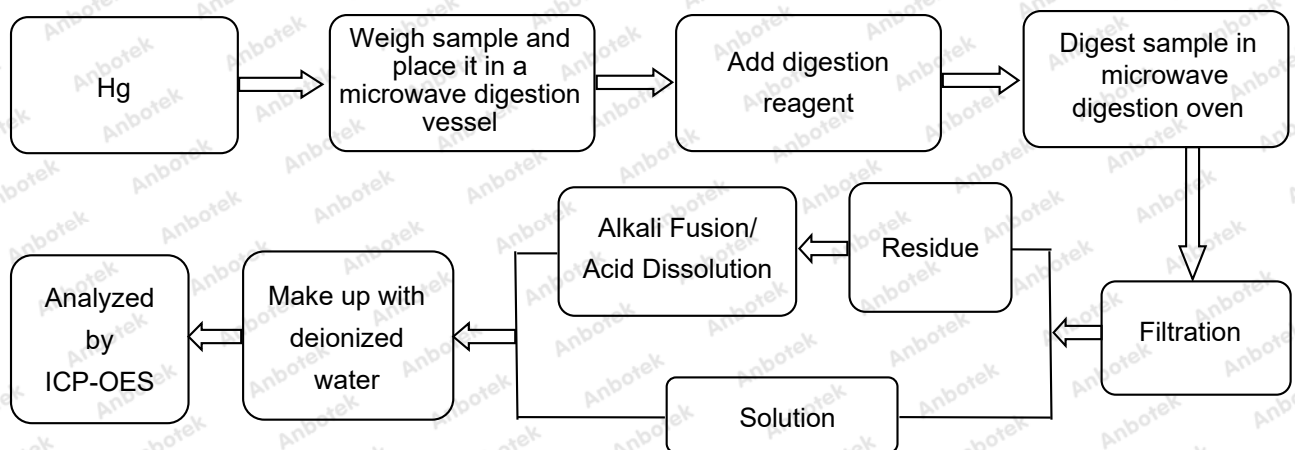
2020.

Test Process:

◆ **IEC 62321-5:2013**



◆ **IEC 62321-4:2013+AMD1:2017**



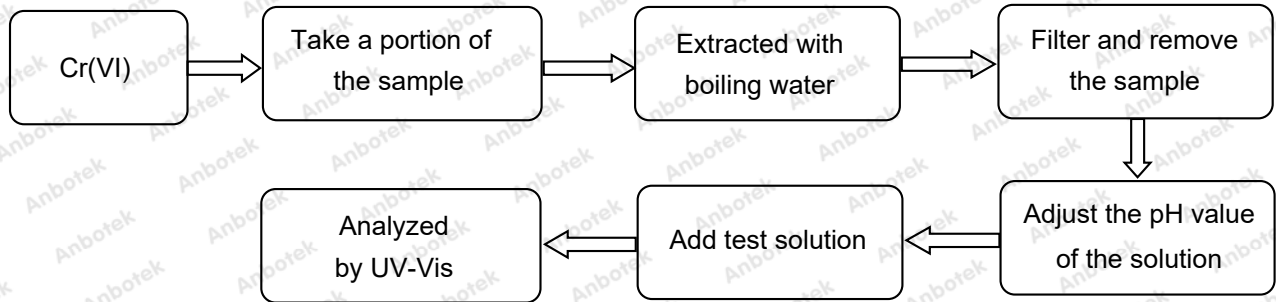
Test Report

Report No.: 18300RC00288401

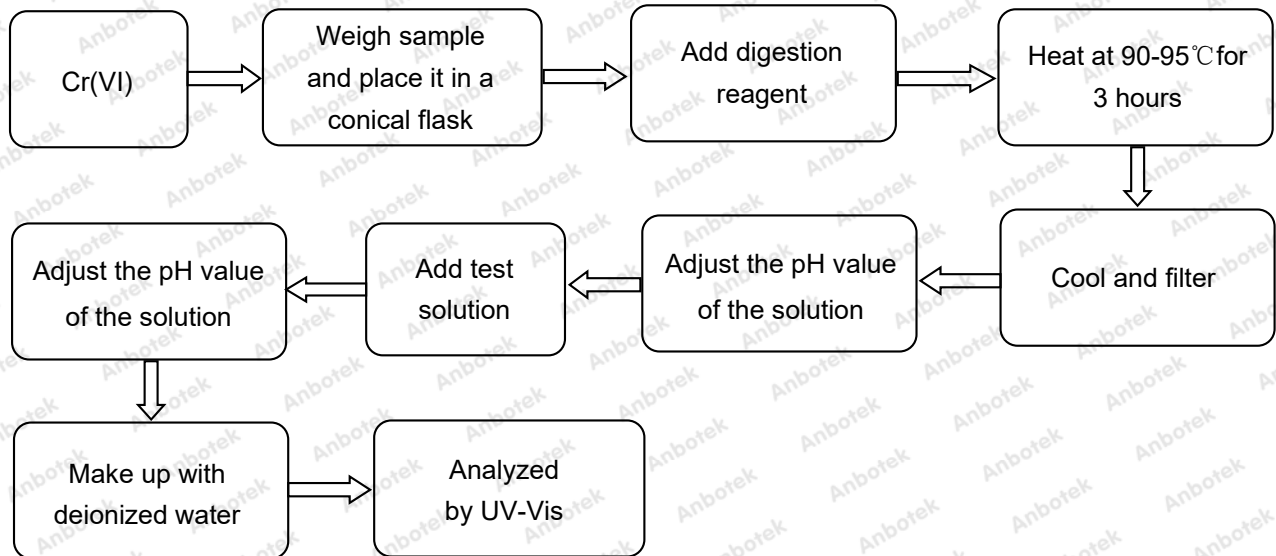
Date: Oct. 30, 2020

Page 20 of 29

◆ IEC 62321-7-1:2015



◆ IEC 62321-7-2:2017

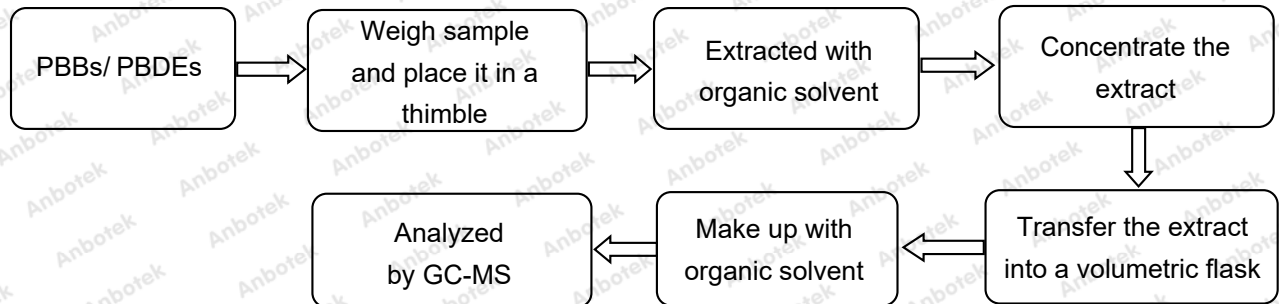
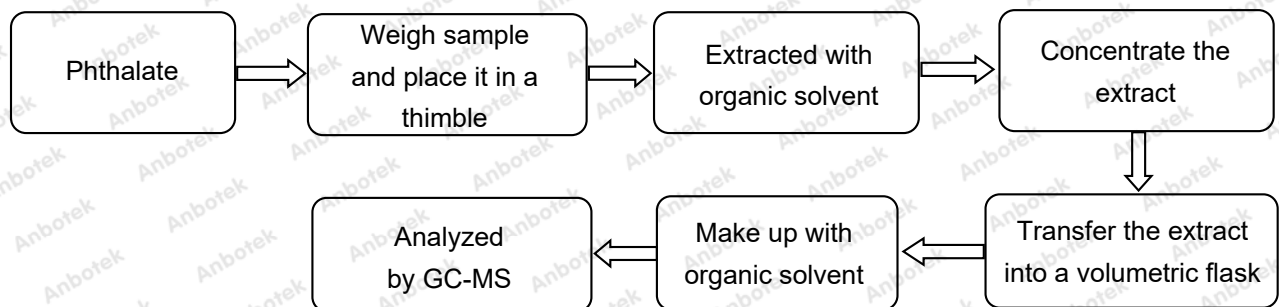


Test Report

Report No.: 18300RC00288401

Date: Oct. 30, 2020

Page 21 of 29

◆ IEC 62321-6:2015**◆ IEC 62321-8:2017**

Test Report

Report No.: 18300RC00288401

Date: Oct. 30, 2020

Page 22 of 29

Photograph of Sample



Photo(s) of the tested component(s)



Test Report

Report No.: 18300RC00288401

Date: Oct. 30, 2020

Page 23 of 29

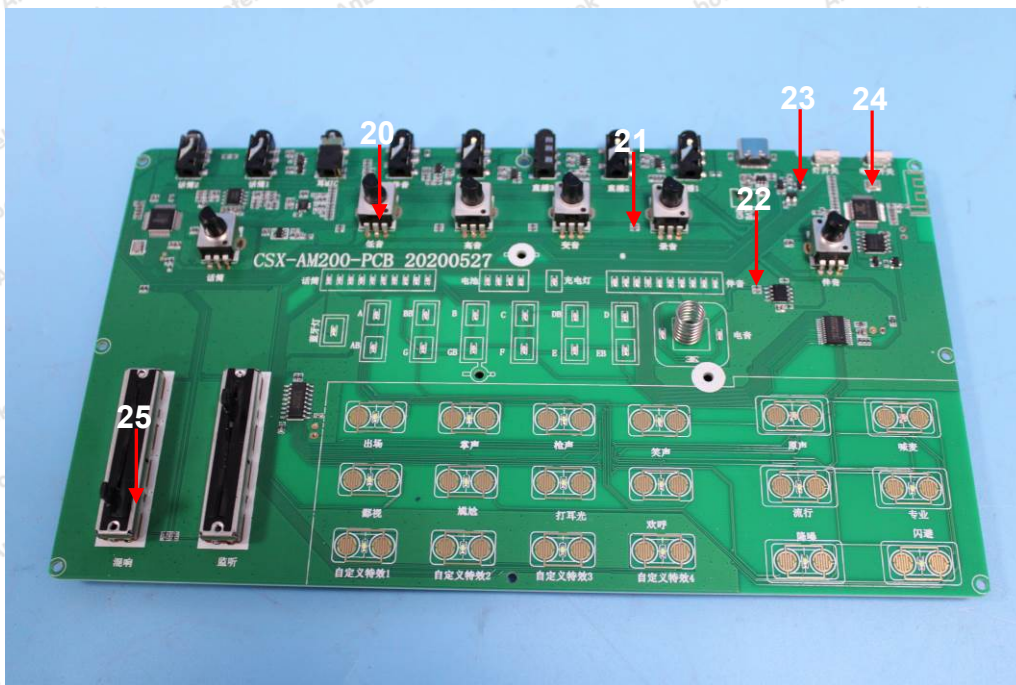
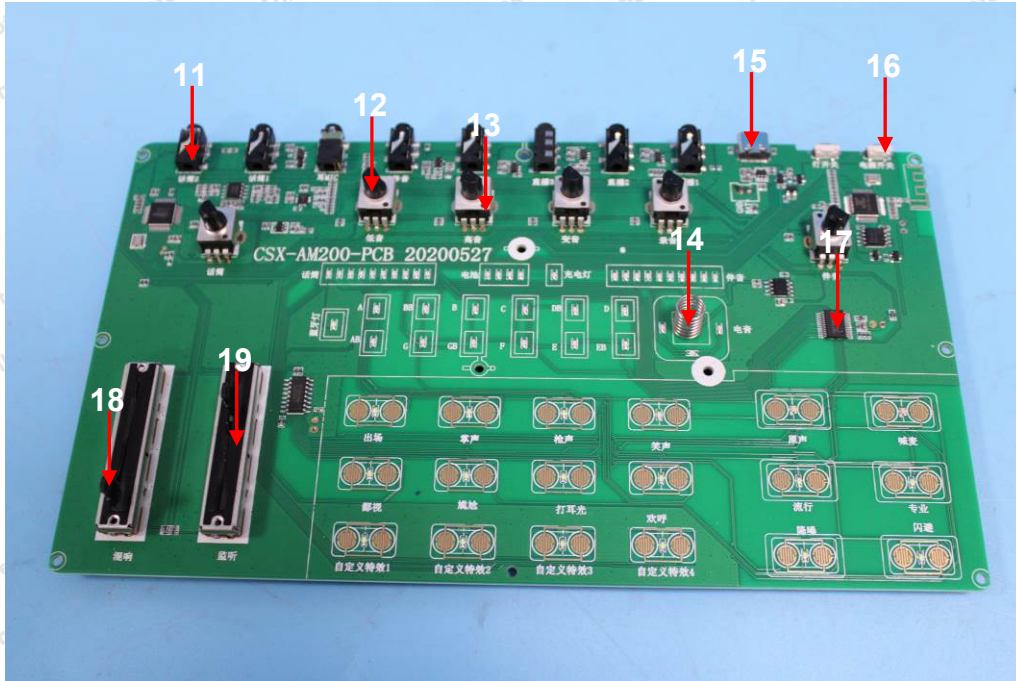


Test Report

Report No.: 18300RC00288401

Date: Oct. 30, 2020

Page 24 of 29

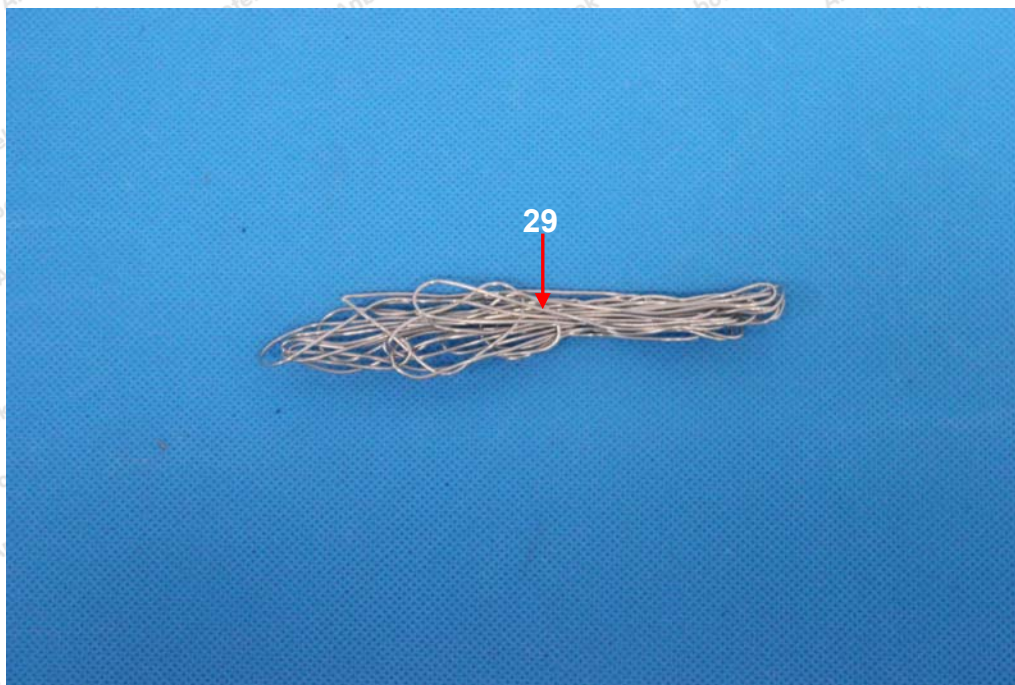
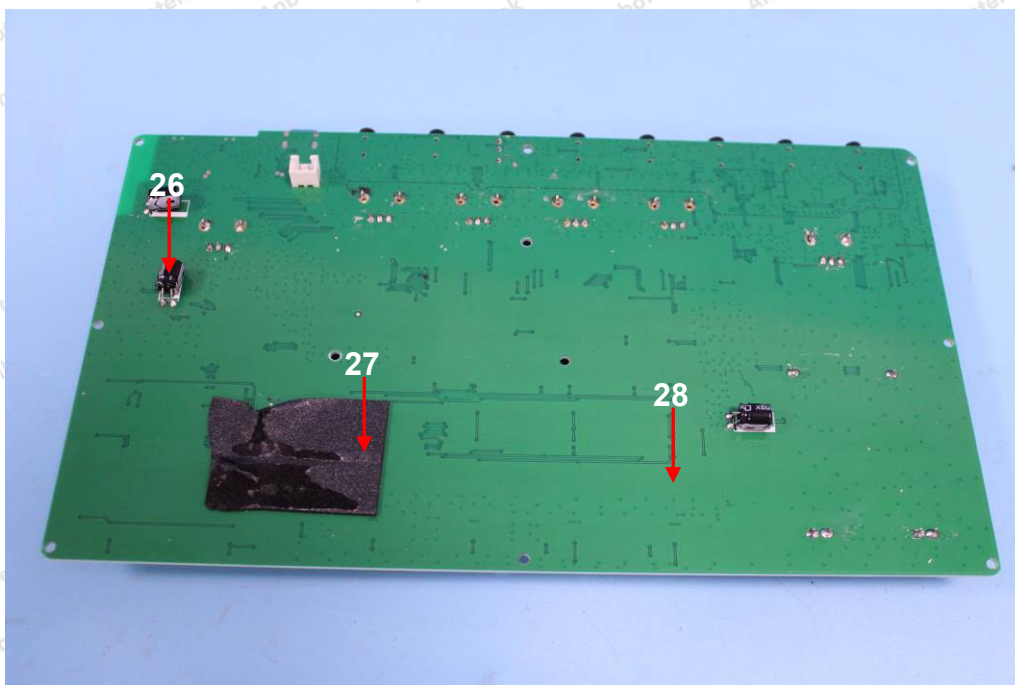


Test Report

Report No.: 18300RC00288401

Date: Oct. 30, 2020

Page 25 of 29

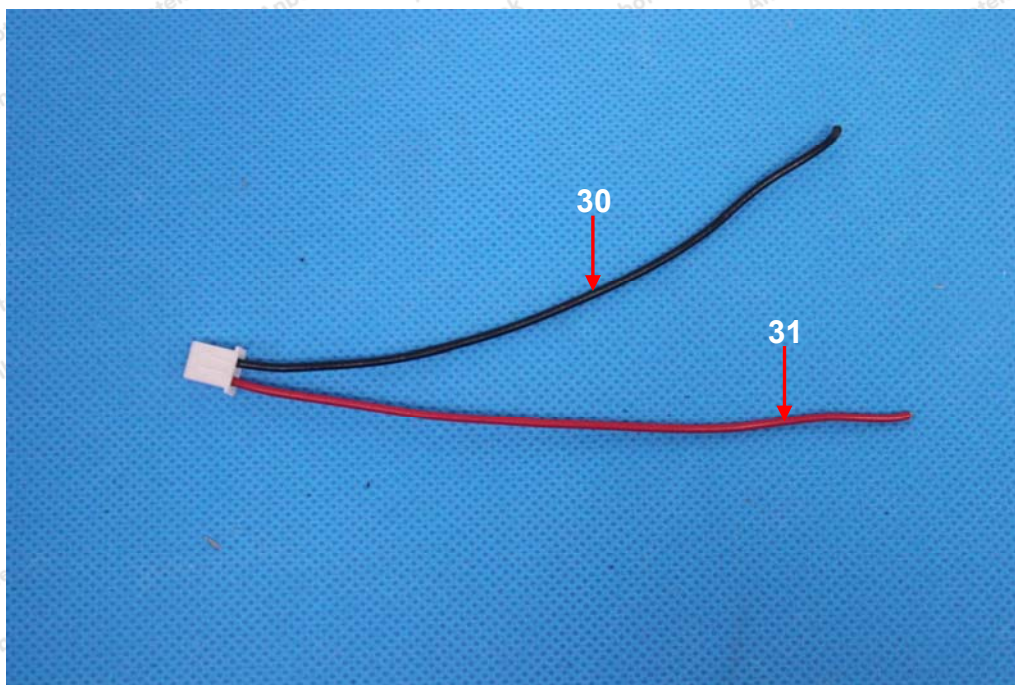


Test Report

Report No.: 18300RC00288401

Date: Oct. 30, 2020

Page 26 of 29

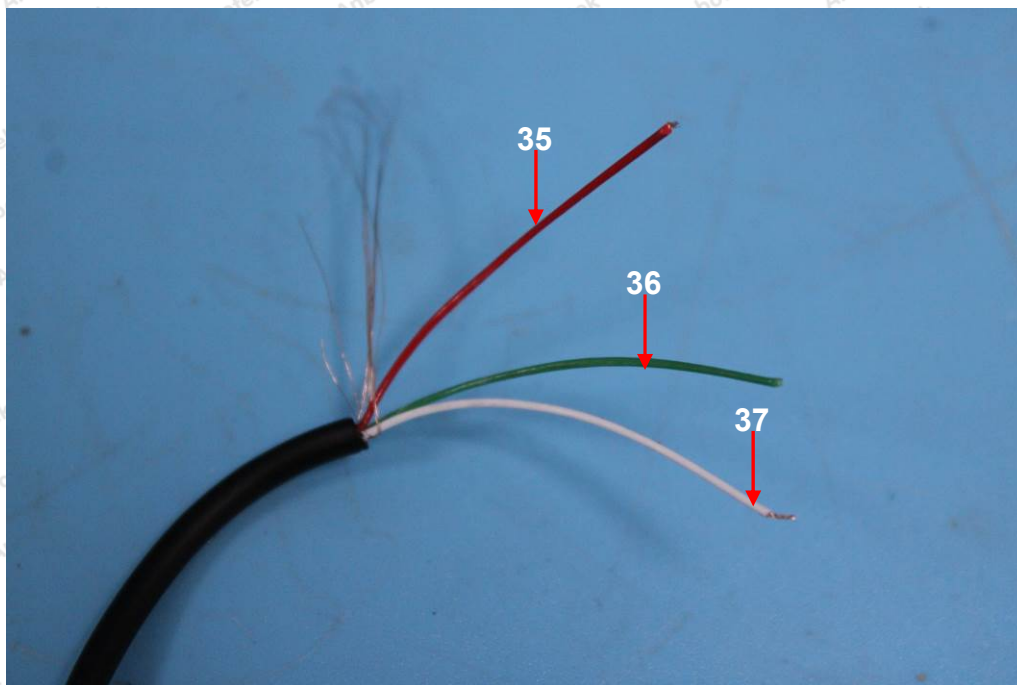


Test Report

Report No.: 18300RC00288401

Date: Oct. 30, 2020

Page 27 of 29

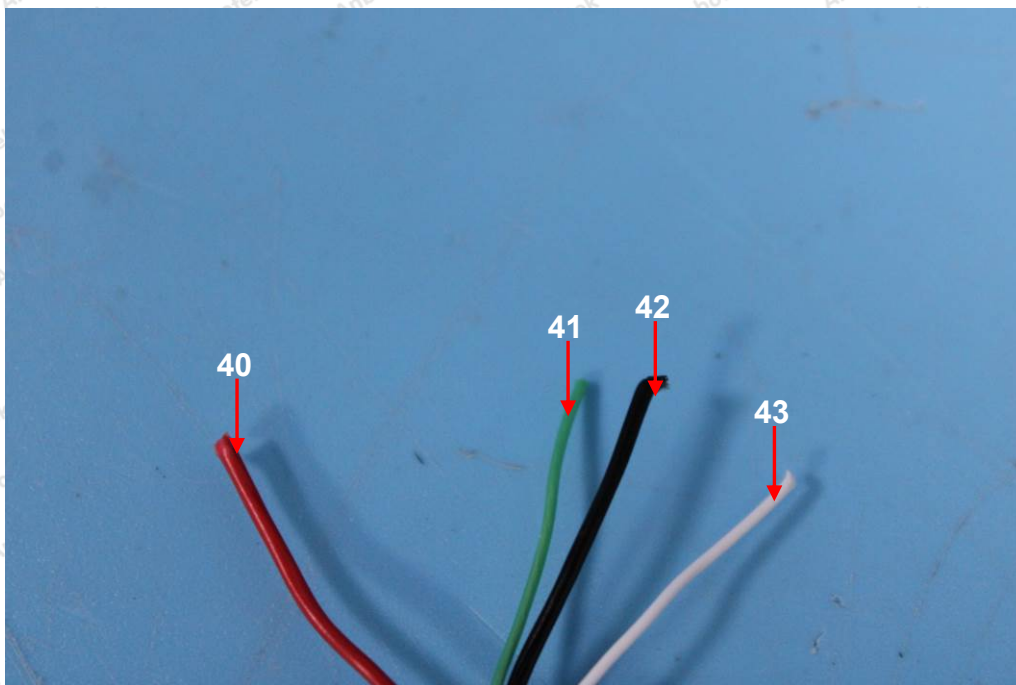
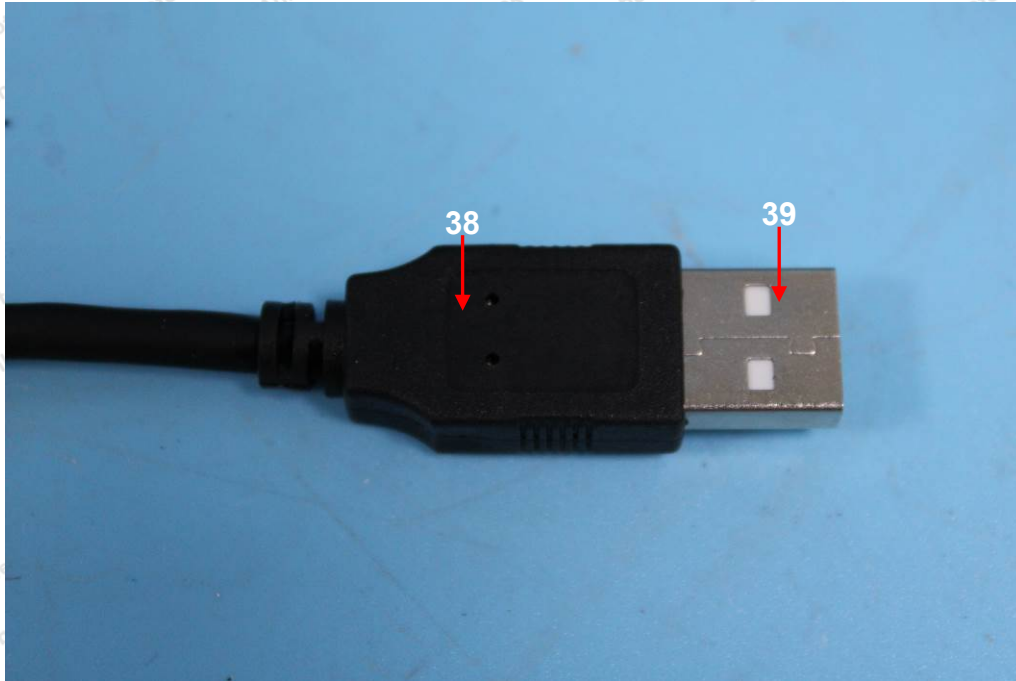


Test Report

Report No.: 18300RC00288401

Date: Oct. 30, 2020

Page 28 of 29

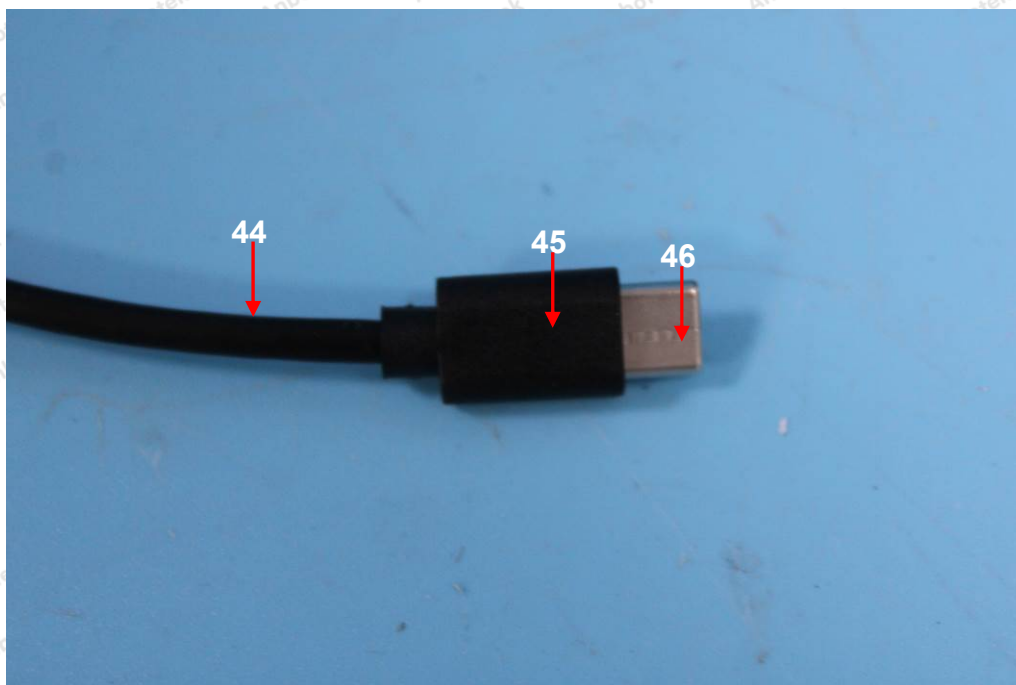


Test Report

Report No.: 18300RC00288401

Date: Oct. 30, 2020

Page 29 of 29



***** End of Report *****

The test report is effective only with both signature and specialized stamp. The result(s) shown in this report refer only to the sample(s) tested. Without written approval of Anbotek, this report can't be reproduced except in full.