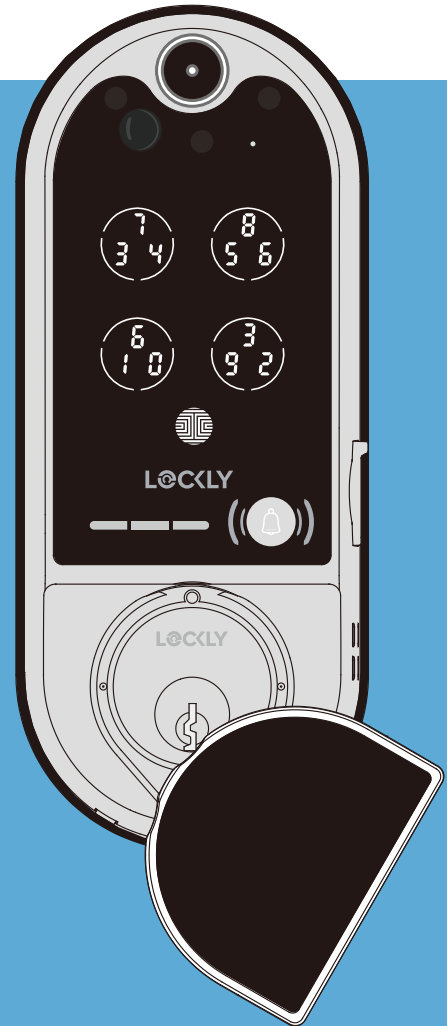


LOCKLY VISION™ ELITE

INSTALLATION GUIDE

DEADBOLT EDITION



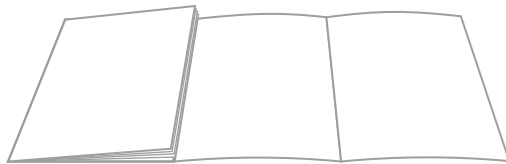
LOCKLY VISION™ ELITE

Go to Lockly.com/installation to watch a video version of this installation guide.



Welcome!

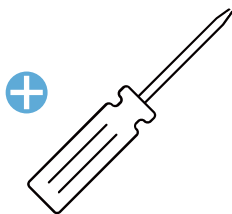
This guide will walk you through step-by-step how to install and get your Lockly Vision™ Elite up and running. Installation generally takes less than 30 minutes. If you have any questions please reference our online support at: [Lockly.com/support](https://lockly.com/support) or call (669) 500-8835 for help.



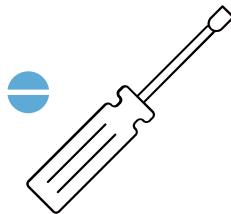
Reference installation parts overview foldout on back page

Preparation

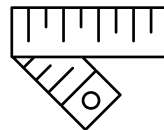
To complete the installation you will need:



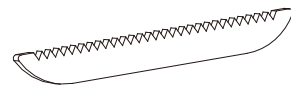
Phillips Screwdriver



Flathead Screwdriver

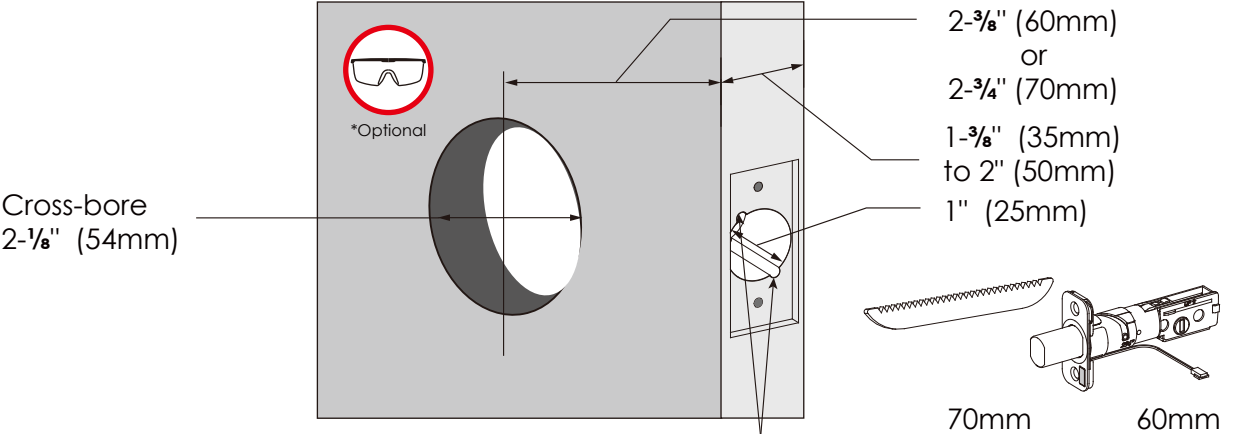


Tape measure or ruler



Alligator Saw (Optional)*

Prepare door: remove existing deadbolt or use provided template to bore new holes.



*There are some latch holes with smaller openings. Skip this procedure if the deadbolt fits the latch hole and make sure the wire cable is not jamming. Use a jab or alligator saw (common on most multi-tool pocket knife) to file and adjust the latch hole. File the latch hole (red marked area) according to the size of your backset. Make sure the wire cable smoothly passes through the latch hole.



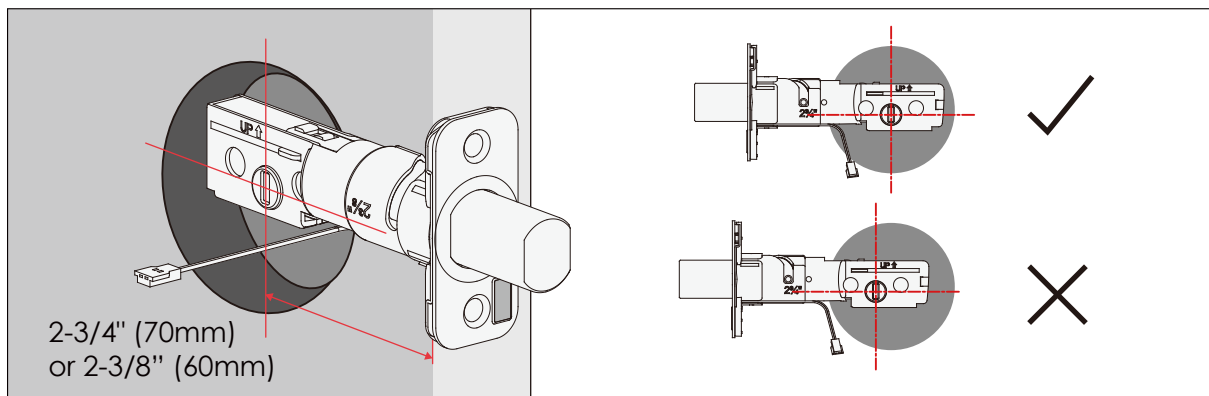
CAUTION: lock contains electrostatic-sensitive (ESD) parts. Best practices: ground yourself by touching a metal surface other than lock to discharge any ESD you might have; don't wear clothes prone to static (ESD); avoid touching electronic internal pins and circuit board.

* Use goggles to protect eyes if you need to drill door holes.

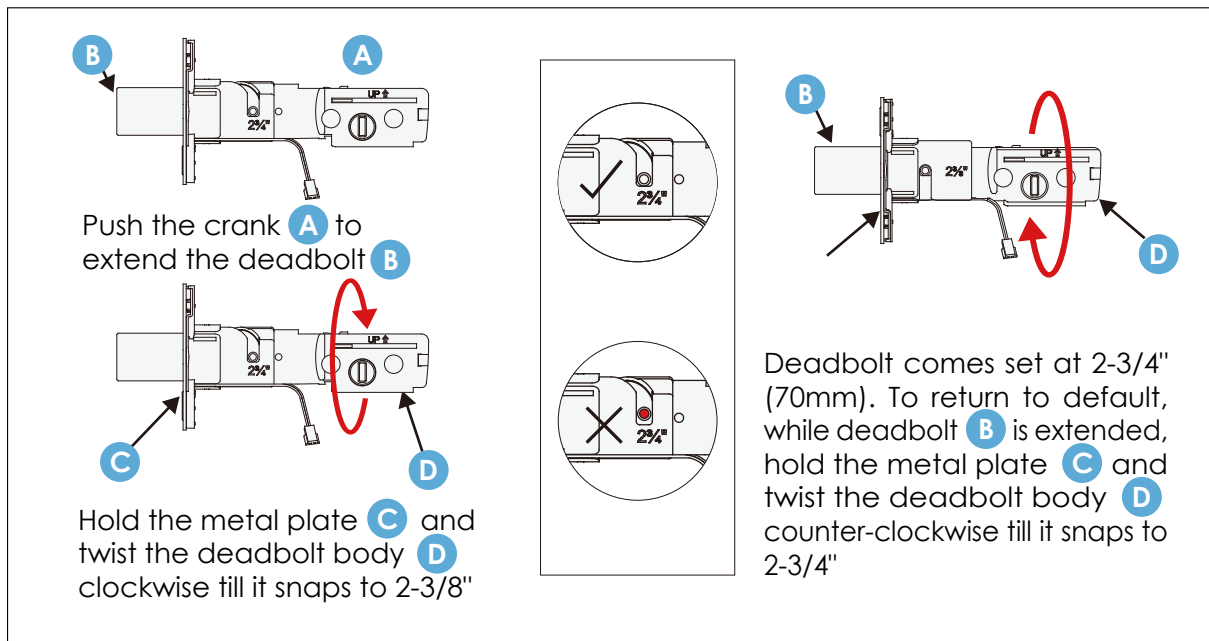
Step 1

ADJUST DEADBOLT AND INSTALL

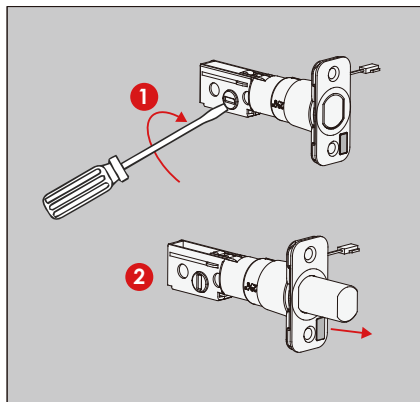
Deadbolt slot must align to the center of the door hole. Adjust as shown if needed.



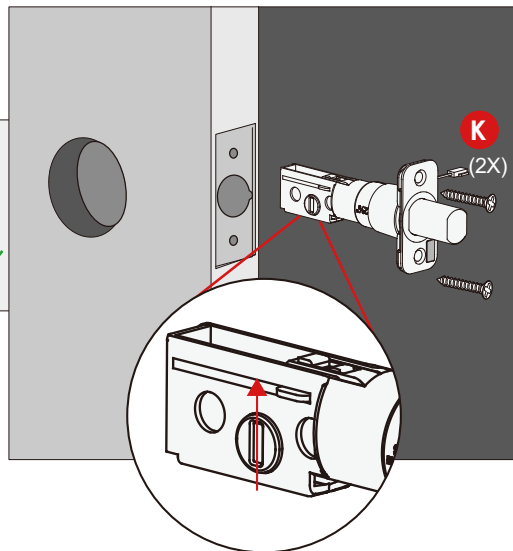
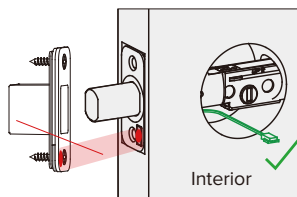
The deadbolt comes set to 2-3/4" (70mm). Adjust length to 2-3/8" (60mm) if necessary. (wear gloves to protect from possible pinching).



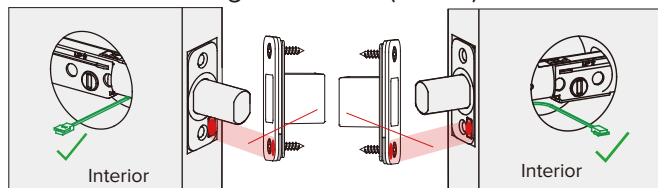
Extend the deadbolt by inserting a flat-head screwdriver into the slot and turning clockwise.



Insert the deadbolt into the door edge, make sure that the right side is up and the slot is in the vertical position. Secure with 2 **K** screws.



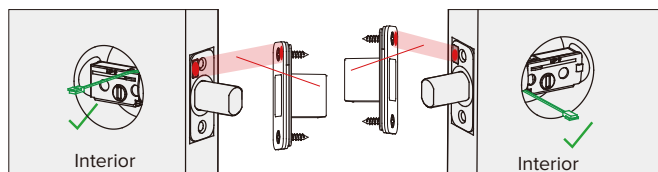
Door edge side view (70mm)



RIGHT SWING DOOR

LEFT SWING DOOR

Door edge side view (60mm)



RIGHT SWING DOOR

LEFT SWING DOOR

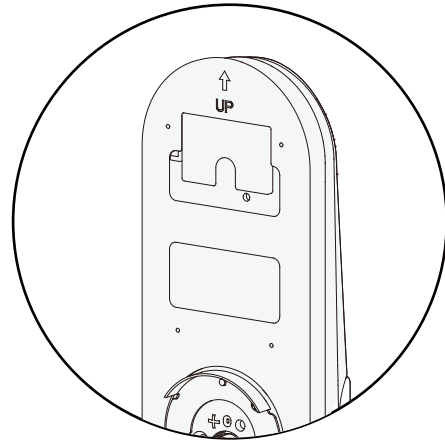
Observe the correct position of the cable to ensure it is according to your door opening orientation (Left /Right Swing) and Backset size (60mm/70mm).

During installation, **DO NOT** hammer the deadbolt and/or its metal plate to avoid damaging the built-in sensor.

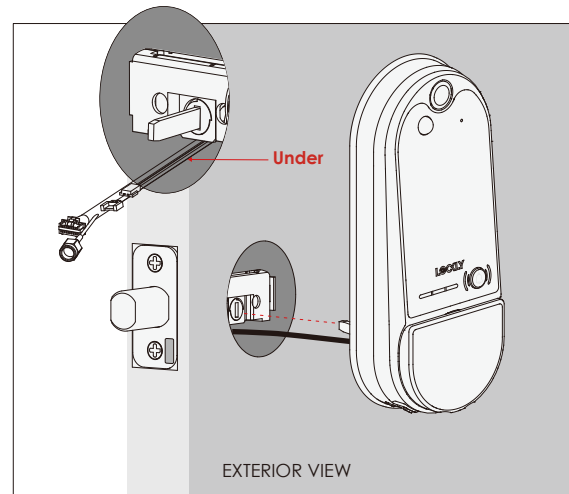
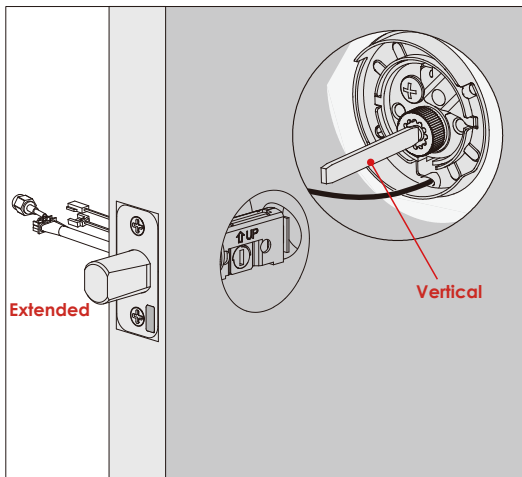
Step 2

INSTALLING EXTERIOR ASSEMBLY (B)

Check the exterior assembly (B) alignment to door hole and deadbolt before peeling off film on adhesive strips.

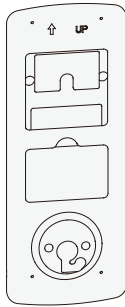


Peel film from adhesive strips and make sure torque blade is in the **vertical** position with the deadbolt **extended**. Place assembly and torque blade through the deadbolt slot and guide connection cables through the cross-bore hole under the deadbolt as shown. Complete mounting by aligning and securing until flush to exterior door surface.

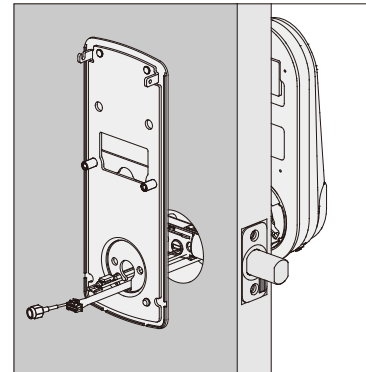


Step 3

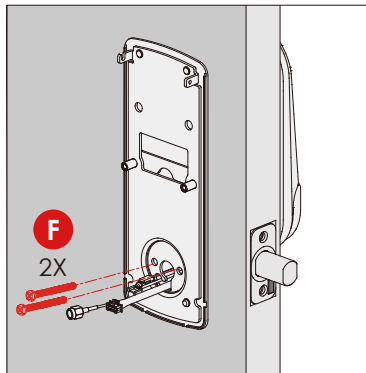
INSTALLING INTERIOR ASSEMBLY (G)



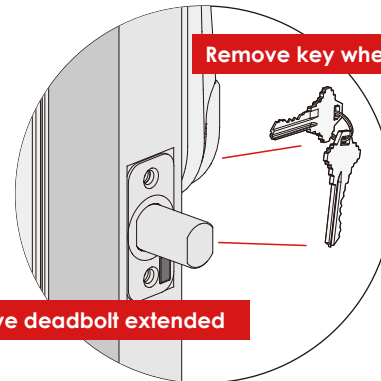
1: Check interior mounting plate **D** alignment to your door hole before securing with adhesive strips.



2: Align and secure mounting plate with adhesive strips. Guide connection cables through the hole and secure to the lower left notched hole.



3: Insert and tighten by hand 2 **F** screws located on the left and right of the blade. Check alignment and tighten with screwdriver until mounting plate is securely placed on door.



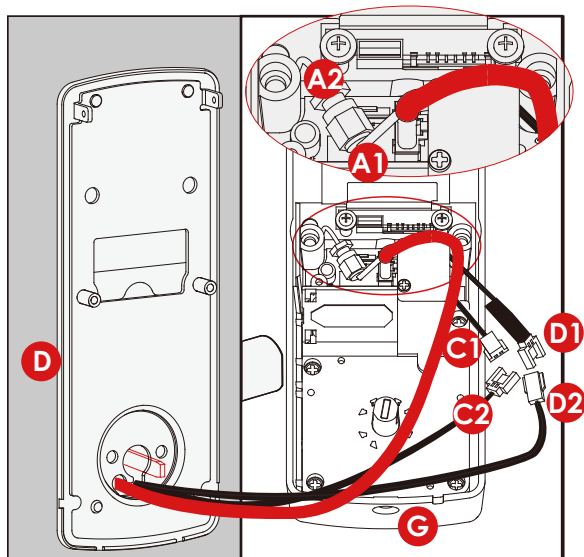
4: Use the key to ensure deadbolt locks and unlocks smoothly (no binding or rubbing). **IMPORTANT: when finished, leave the deadbolt extended and remove the key before proceeding to the next step.**

TIP: when installing screws by hand, turn screws clockwise several turns then counterclockwise one turn to ensure smooth threading and no cross threading.

Step 3 continued

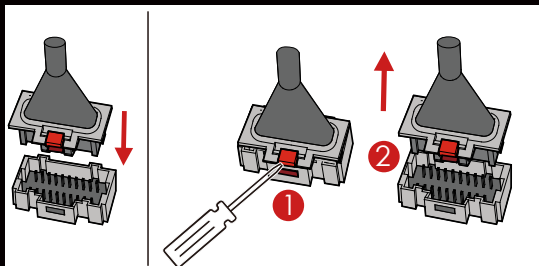
INSTALLING THE INTERIOR ASSEMBLY (G)

Plug the larger cable coming through mounting plate **D** into the interior assembly **G** as shown, route to the right of interior assembly **G**.



Install Cable

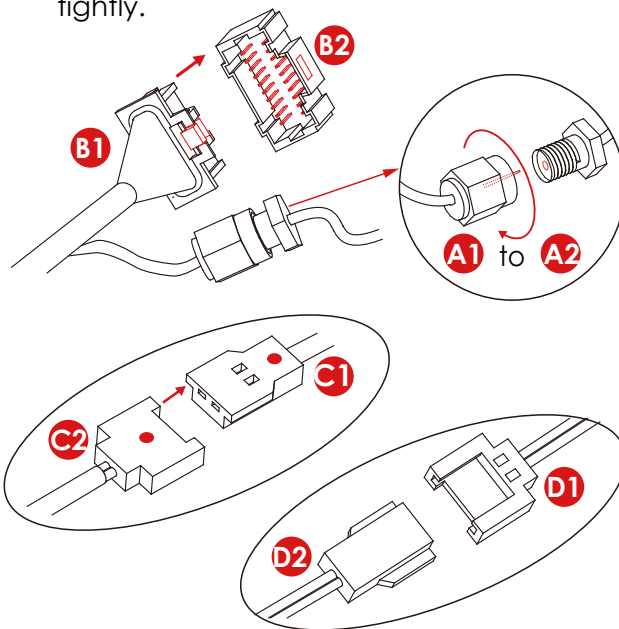
Remove Cable



IMPORTANT:

If you need to disconnect this cable, use a screwdriver to hold down the tab (marked red) before carefully unplugging. **DO NOT FORCE** as this may result in damaging the lock.

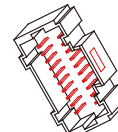
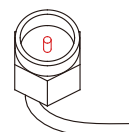
Connect **A1** to **A2** screw tightly by hand as shown. Plug to **B1** to **B2**, **C1** to **C2** and **D1** to **D2** match red side of plug with red on socket then insert tightly.



NOTE: **C1** is not compatible to **D2**.



Do not touch pins inside*

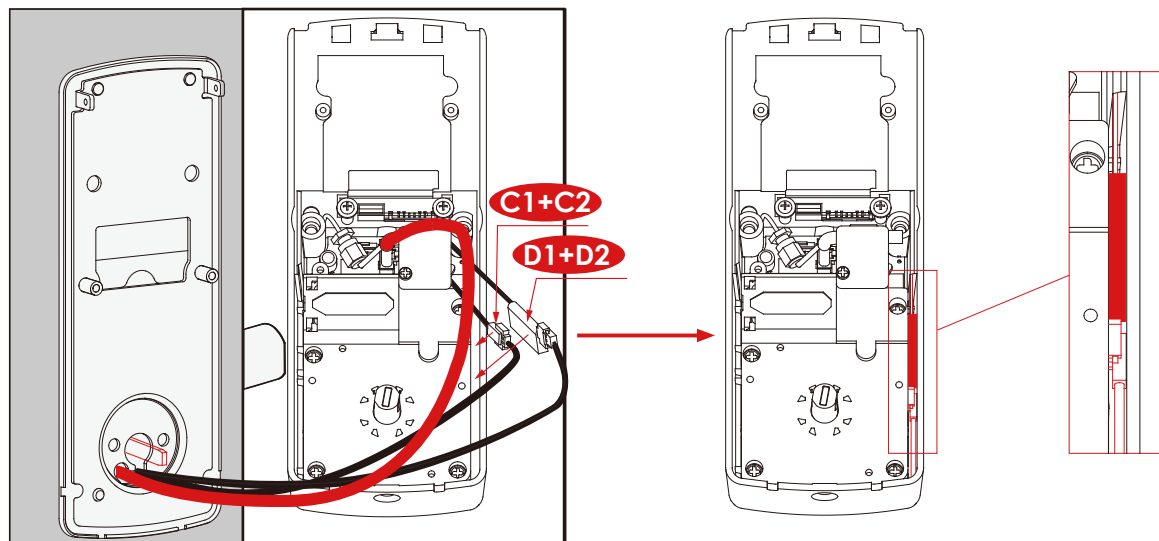


Call our Customer Care Hotline (669) 500-8835, for help if the pins are not centered or bent.

Step 3 continued

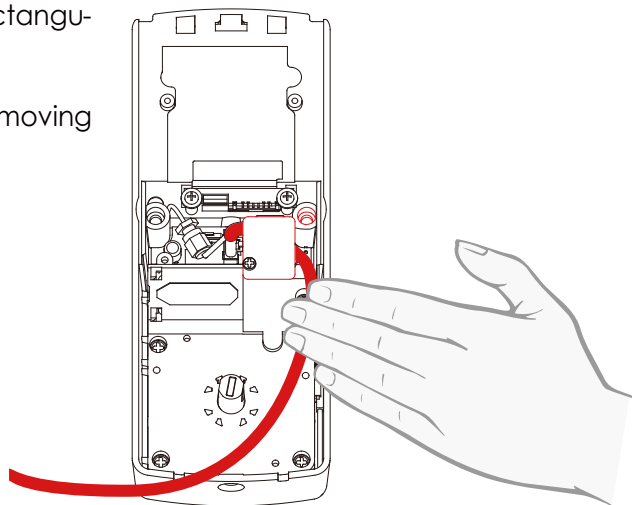
INSTALLING THE INTERIOR ASSEMBLY (G)

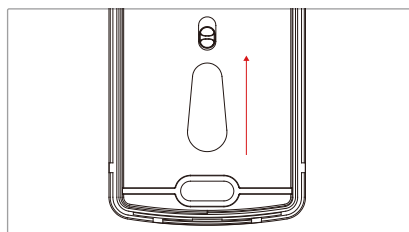
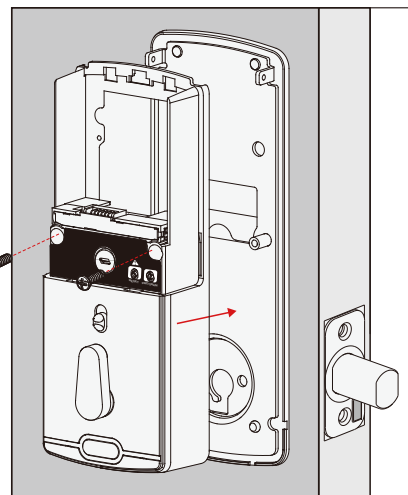
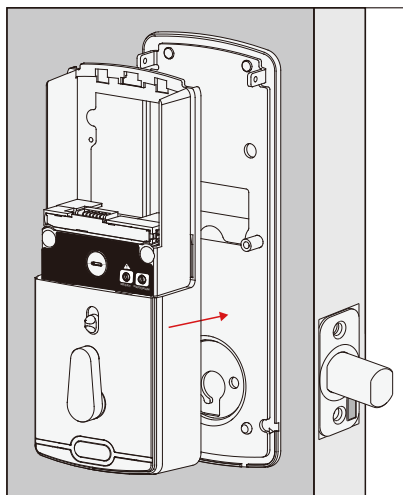
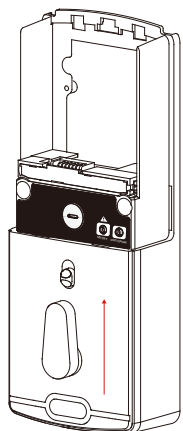
Insert **C1+C2** and **D1+D2** cables into the grooves on the side. Make sure the foam pads attached to the cables are secured to prevent the cables from moving.



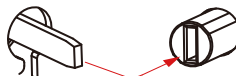
Tuck **C1+C2** and **D1+D2** cables behind the rectangular cable rail on the interior panel.

Hold the cable with your fingers to prevent it from moving and to prepare mounting onto door.





Torque Blade Thumb turn shaft



Align torque blade with thumb turn shaft, **make sure both are in the vertical position.**



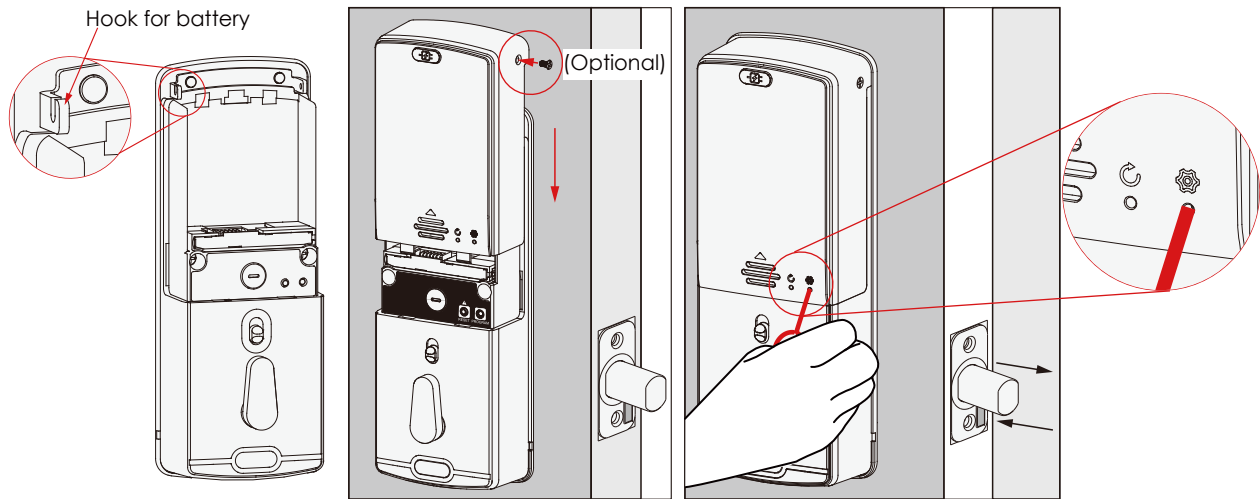
Before placing the interior assembly onto the mounting plate, ensure the thumb turn is **vertical**.

Place the interior assembly against the mounting plate and make sure the torque blade is inserted to the thumb turn shaft.

Secure the interior assembly to mounting plate with 2 **H** screws.

Step 4


INSTALLING BATTERY



1. With door open and deadbolt fully extended, insert lithium battery. Make sure to securely hook the battery on the provided slot of the interior panel. *(Optional)* Tighten the screw on the right side. **IMPORTANT:** If you're using this battery for the first time, ensure that battery has been fully charged. Use any standard 5V USB charger to full charge the lithium battery.

2. After the battery is secured, use the **pin key** in the accessory bag to HOLD the program button for 10S. The lock will automatically start self-check (release program button once check starts). The self-check process determines right or left swinging door and is very important to ensure correct installation. **IMPORTANT:** if lock is not properly installed it will open and close repeatedly.

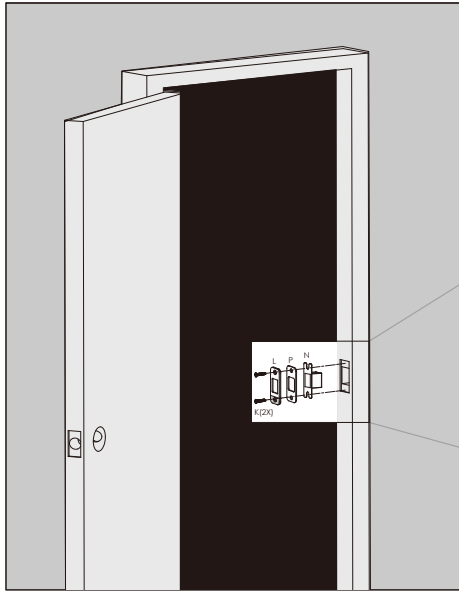
3. Once self-check completes ensure the lock operates smoothly by manually locking and unlocking the door using the thumb turn on the interior assembly. The deadbolt should operate smoothly without any interference or binding. If necessary, repeat step 2 and ensure that (a) the deadbolt was extended and (b) the torque blade was inserted vertically while the deadbolt was extended.

4. Swipe your hand across touchscreen. The lock should close (lock). If the touchscreen is ON, touch  , the lock should lock as well. If deadbolt bounces back or unlocks automatically it means something is not installed correctly. Go back and repeat step 2, same as above.

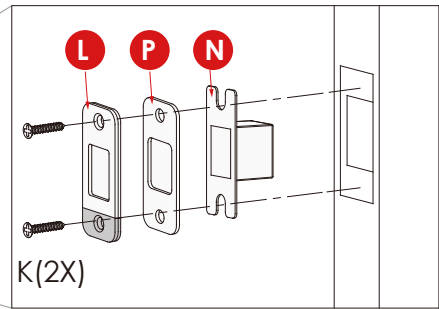
Step 5

INSTALLING STRIKE PLATE

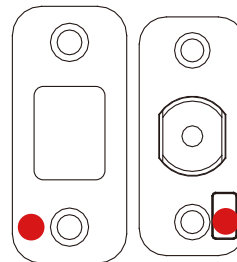
Use the supplied door strike plate (L) which has the built-in door sensor magnet.



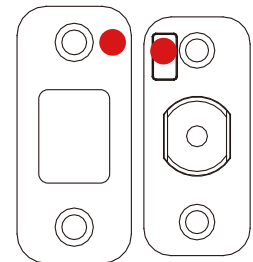
If your door gap is larger than 5mm, it is recommended to install Strike Spacer **P** to lessen the gap to ensure the normal operation of the door sensor.



When installing the deadbolt and door strike, make sure the two red marks are aligned.



side view (70mm)



side view (60mm)

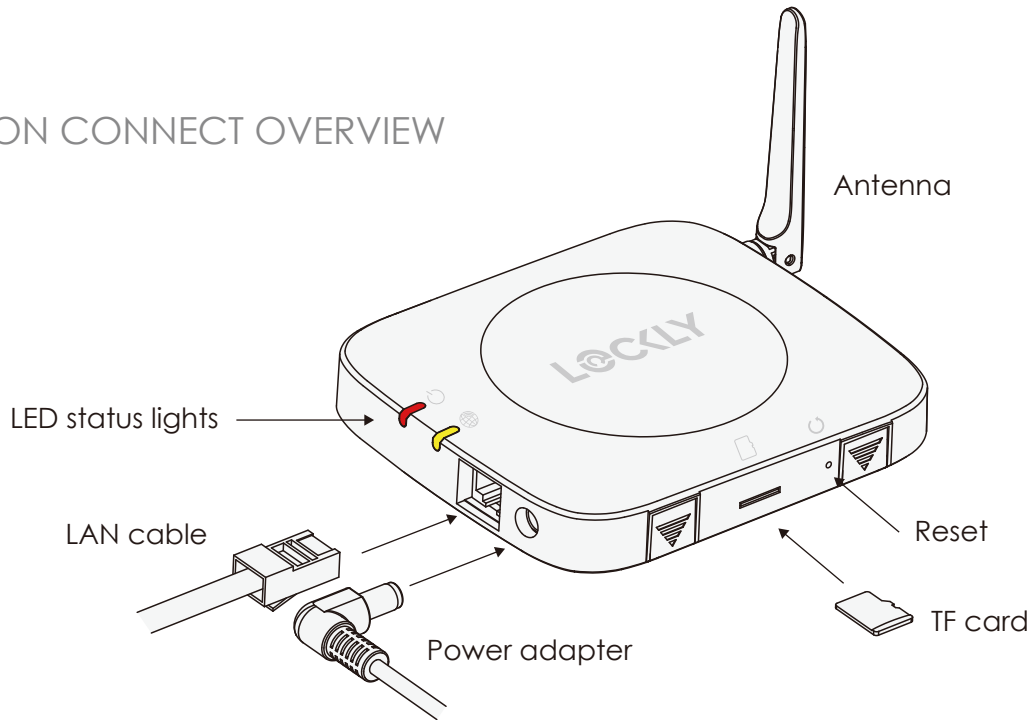
IMPORTANT: Because doors and frames vary in design it may be necessary to make slight adjustments to your strike plate and/or dust box in order to ensure smooth deadbolt operation. **This is very important.** If the deadbolt is binding or catching in any way, the lock will sound an alarm (rapid beeping) indicating it cannot close due to misalignment and/or excessive rubbing or binding.

Step 6

SETUP THE HUB

To enable video doorbell, live monitoring and voice control with Hey Google and Alexa, you will need to setup the included Vision Connect Wi-Fi hub with the Lockly Vision™ Elite deadbolt smart lock + video doorbell.

VISION CONNECT OVERVIEW



IMPORTANT: Vision Connect stores recorded video on the included TF card. Although the TF card is discrete, it is recommended to locate it in a discrete or secure area to protect your privacy and video recordings. TF Card is already inserted on the hub when shipped.

Step 7

LOCKLY APP & UNIQUE ACTIVATION CODE

Before setting up Vision Connect Hub download the Lockly app on your smartphone. It's required to finish and setup the connection between hub and lock.



Scan, visit app store, or go to [Lockly.com/app](https://lockly.com/app)

Additionally, you'll need the Activation Card with unique pre-paired QR code to your lock. The card is located in the packaging that your lock came in. This QR code can also be found at the bottom of Vision Connect Hub. Please keep it in a safe place—this QR code is required to complete the setup and will be required if you lose your smartphone or access code.

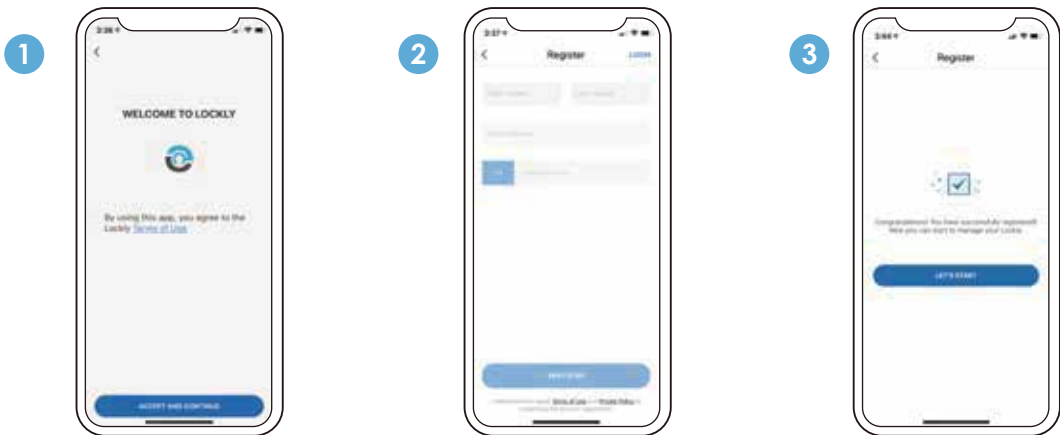


IMPORTANT: Without the QR code you will not be able to reset your lock

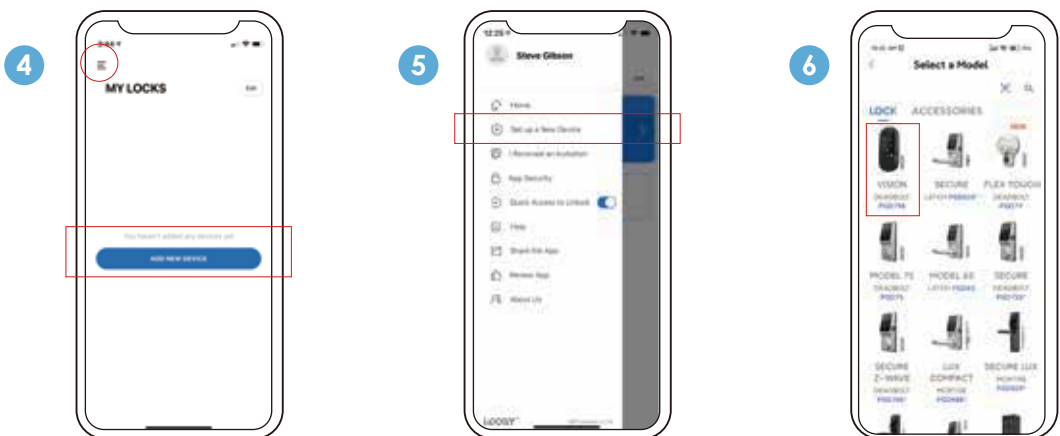
Step 8

APP SET UP

Set up an account by registering your Lockly Vision™ Elite in the Lockly app. Registration is also mandatory to activate your locks warranty.



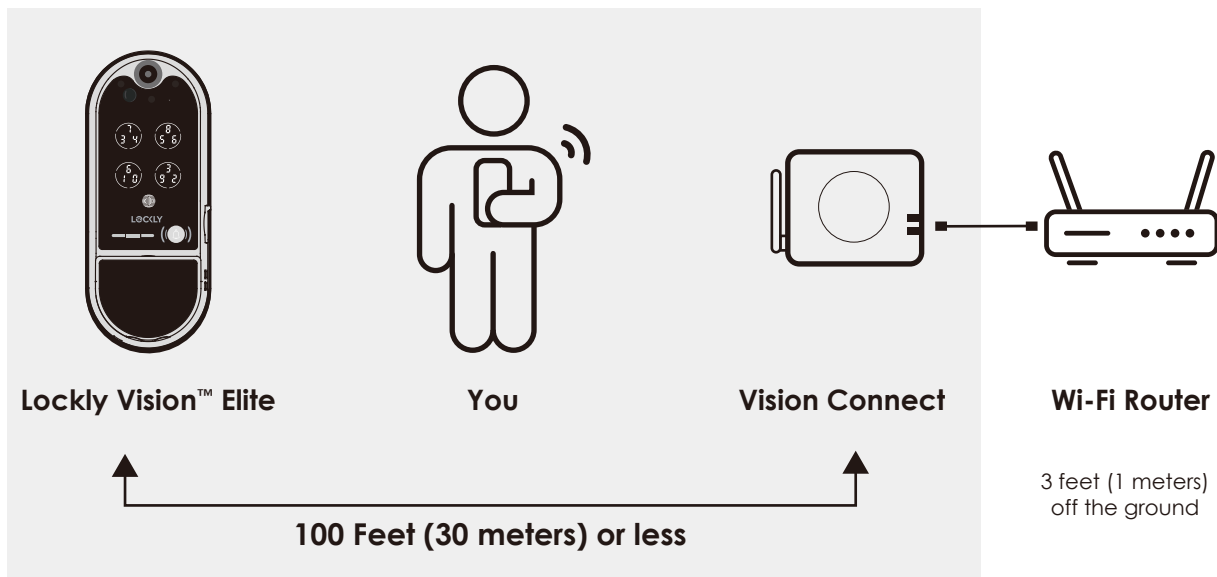
After successful registration, select "add a new device" (you can also get to this from the menu in the top left), select Vision, and follow the step-by-step on screen instructions. You can also reference these steps on following pages.



Step 9

LOCATION GUIDELINES

The Vision Connect Hub connects directly to your Wi-Fi router using the provided LAN cable. Choose an appropriate location for the hub for optimum performance (see below). For optimum connectivity, it is recommended to set up the hub **LESS than 100 feet** (30 meters) away from the lock, and **elevated 3 feet (1 meter)** off the ground.



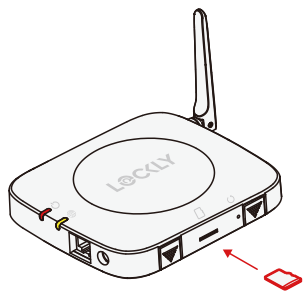
During the setup process position yourself between the lock and the Vision Connect hub—ideally no more than 100 feet (30 meters) apart. Ensure your iOS or Android™ device has both Bluetooth® and Wi-Fi enabled,

TIP: Sometimes distances between hub and lock can vary due to circumstances. If you are having difficulty setting up optimal range of 100/ft or less, we're here to help. Call our customer care team: (669) 500 8835, or visit [Lockly.com/help](https://www.lockly.com/help) for suggestions and troubleshooting tips.

Step 10

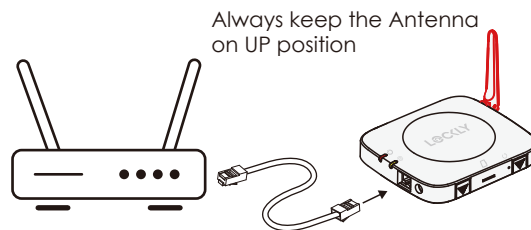
VISION CONNECT HUB SETUP

Ensure the TF card that comes with Vision Connect is properly inserted.



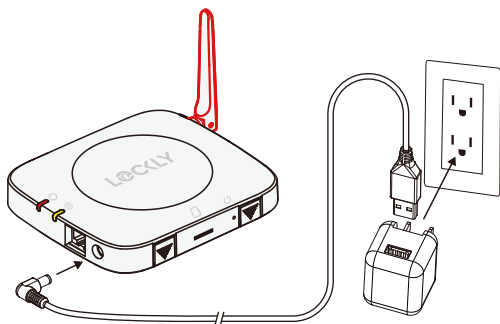
TF card (included, inserted)

Connect LAN cable to closest Wi-Fi router to the Lockly Vision™ Elite lock (<100ft).

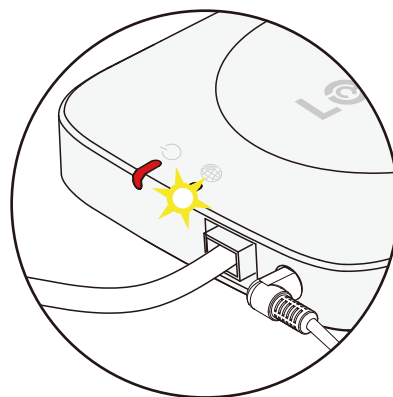


LAN cable (S) (included)

Connect power cable and plug USB power adapter into outlet.



Wait 2 minutes for hub to self calibrate. Once LEDs turn RED and blink yellow.



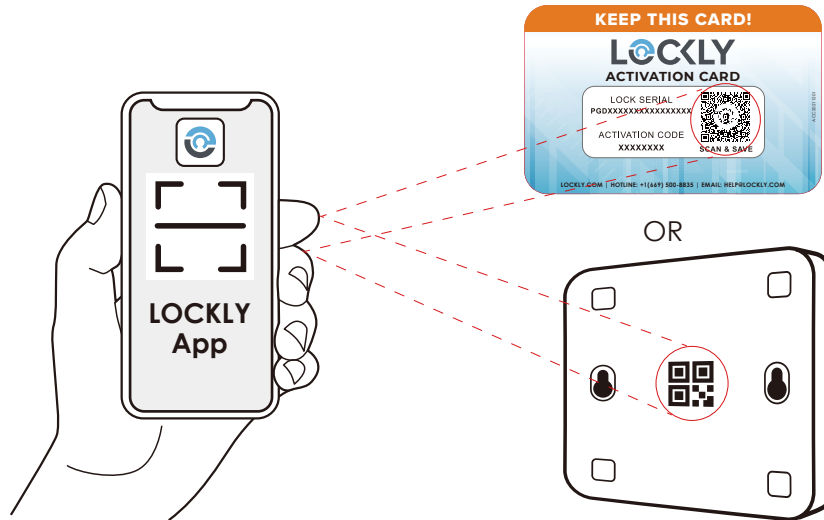
Vision Connect is now ready to connect to your iOS or Android™ device.

See troubleshooting on next page if LEDs do not meet the described conditions.

Step 11

PAIR VISION LOCK TO APP

Launch the **Lockly App** and select "**add a new device**", then select Vision. You will be prompted to scan the QR code from the Activation Card or Vision Connect Hub (located at the bottom).






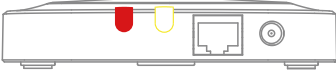




IMPORTANT: make sure your Lockly Vision™ Elite has the latest firmware. Allow updates and follow instructions if prompted. For more info, visit: <http://www.support.Lockly.com/-faq/firmware-update/>

NOTE: Power interruption during firmware update may damage the Vision Connect hub.
Do not interrupt or turn the power off while firmware update is in progress.

TIPS:

- Remember to register for warranty.
- Allow your mobile phone to receive push notifications.
- Send in-app feedback if you encounter any issues while using the App.
- If you are having difficulty scanning the QR code, we're here to help. Call our customer care team: (669) 500 8835, or visit Lockly.com/help for suggestions and troubleshooting tips.

VISION CONNECT STATUS & TROUBLESHOOTING

	LED INDICATORS	HUB	STATUS
During Setup	Solid red ON	After connecting LAN cable and power adapter, wait for 2mins for Vision Connect to self calibrate.	Power ON/ Successfully paired
	Yellow slow blinking	 READY TO CONNECT	Network connected
	If you experience any of the following, power down and disconnect hub, repeat connection process		
	Red slow blinking		Pairing / Network NOT yet connected
	Red fast blinking		Pairing unsuccessful
	Yellow OFF		Router or LAN cable issue NO network connection
During Firmware Update	Blinking red goes to blue, then turns OFF		Resetting
	Blue slow blinking		Update in progress*
	Blue ON		Update Successful
	Blinking from red to blue		Update has failed

*Power interruption during firmware update may damage the Vision Connect hub.
Do not interrupt or turn the power off while firmware update is in progress.

Hands-free voice control

Control and check your status using only your voice with Amazon Alexa or Google Assistant-enabled devices.



"Alexa, is my Front Door locked?"



"Your Front Door is locked"

To setup your lock to work with either voice assistant, download the Amazon Alexa or Google Home App and add a new Amazon Alexa Skill or Lockly Action on Google.



TIP: In Google Home or Amazon Alexa app, add Lockly skill for Alexa or Lockly Action on Google, then follow on screen instructions. See full list of commands, help videos, or troubleshooting your Lockly at <https://Lockly.com/help>

Google, Android, Google Play and Google Home are trademarks of Google LLC.

FCC Warning :

This device complies with Part 15 of the FCC Rules. Operation is subject to the following two conditions: (1) This device may not cause harmful interference, and (2) this device must accept any interference received, including interference that may cause undesired operation.

NOTE 1: This equipment has been tested and found to comply with the limits for a Class B digital device, pursuant to part 15 of the FCC Rules. These limits are designed to provide reasonable protection against harmful interference in a residential installation. This equipment generates, uses and can radiate radio frequency energy and, if not installed and used in accordance with the instructions, may cause harmful interference to radio communications. However, there is no guarantee that interference will not occur in a particular installation. If this equipment does cause harmful interference to radio or television reception, which can be determined by turning the equipment off and on, the user is encouraged to try to correct the interference by one or more of the following measures:

- Reorient or relocate the receiving antenna.
- Increase the separation between the equipment and receiver.
- Connect the equipment into an outlet on a circuit different from that to which the receiver is connected.
- Consult the dealer or an experienced radio/TV technician for help.

NOTE 2: Any changes or modifications to this unit not expressly approved by the party responsible for compliance could void the user's authority to operate the equipment.

FCC Radiation Exposure Statement

Lockly Vision Elite complies with FCC radiation exposure limits set forth for an uncontrolled environment. It should be installed and operated with minimum distance 20cm between the radiator & your body.

IC WARNING

This device contains license-exempt transmitter(s) that comply with Innovation, Science and Economic Development Canada's licence-exempt RSS(s). Operation is subject to the following two conditions:

- (1) This device may not cause interference.
- (2) This device must accept any interference, including interference that may cause undesired operation of the device.

L'émetteur/récepteur exempt de licence contenu dans le présent appareil est conforme aux CNR d'Innovation, Sciences et Développement économique Canada applicables aux appareils radio exempts de licence. L'exploitation est autorisée aux deux conditions suivantes:

1. L'appareil ne doit pas produire de brouillage;
2. L'appareil doit accepter tout brouillage radioélectrique subi, même si le brouillage est susceptible d'en compromettre le fonctionnement.

IC Radiation Exposure Statement

This equipment meets the exemption from the routine evaluation limits in section 2.5 of RSS-102. It should be installed and operated with a minimum distance of 20cm between the radiator and any part of your body.

Cet équipement est conforme à l'exemption des limites d'évaluation habituelle de la section 2.5 de l'annexe RSS-102. Il doit être installé et utilisé à une distance minimale de 20 cm entre le radiateur et toute partie de votre corps.



WARNING: This product can expose you to chemicals including Lead, which is known to the State of California to cause cancer. For more information go to www.P65Warnings.ca.gov.

INSTALLATION OVERVIEW AND PARTS LIST

Lockly Vision™ Elite can be fitted for both right swing doors and left swing doors.

KEEP THIS CARD!
LOCKLY
ACTIVATION CARD

LOCK SERIAL
PGDXXXXXXXXXXXXXXX

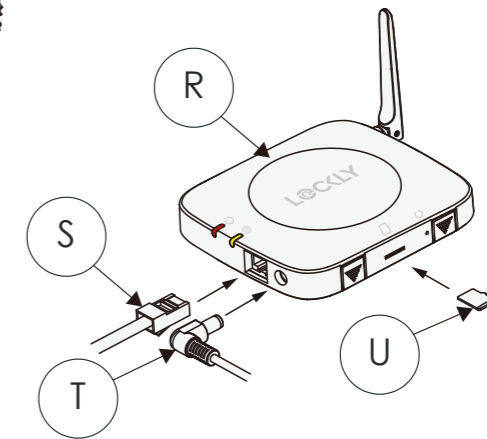
ACTIVATION CODE
XXXXXXXXXX

SCAN & SAVE

LOCKLY.COM | HOTLINE: +1(649) 500-8835 | EMAIL: HELP@LOCKLY.COM

Labeled As	Description
A	Keys
B	Exterior Assembly
C	Exterior
D	Mounting Plate
E	Adhesive
F	PM5×60mm Screw
G	Interior Assembly
H	PM4*12MM Screw
I	Battery Cover
J	Deadbolt
K	KA4*20MM Screw
L	Strike Plate
N	Dust Box
P	Strike Spacer
R	Vision Connect
S	LAN Cable
T	Power Plug
U	TF Card
V	Activation Card
W	KM3x6mm Screw
X	Pin Key

Lockly Vision™ Elite can be fitted for both right swing doors and left swing doors.



LOCKLY VISION™ ELITE



We're here to help!
Email: help@Lockly.com

For the most up to date version of this guide please visit:
Lockly.com/help

© Copyright 2022 Lockly All rights reserved

USA Patent No. US 9,881,146 B2 | USA Patent No. US 9,853,815 B2 | USA Patent No. US 9,875,350 B2 | USA Patent No. US 9,665,706 B2 | USA Patent No. US 11,010,463 B2 | AUS Patent No. 2013403169 | AUS Patent No. 2014391959 | AUS Patent No. 2016412123 | UK Patent No. EP3059689B1 | UK Patent No. EP3176722B1 | Multiple Patents Pending The Bluetooth® word mark and logos are registered trademarks owned by the Bluetooth SIG, Inc. , and any use of such marks by Lockly is under license. Other trademarks and trade names are those of their respective owners. Google, Android, Google Play and Google Home are trademarks of Google LLC. , and all related logos are trademarks of Amazon.com, Inc., or its affiliates.