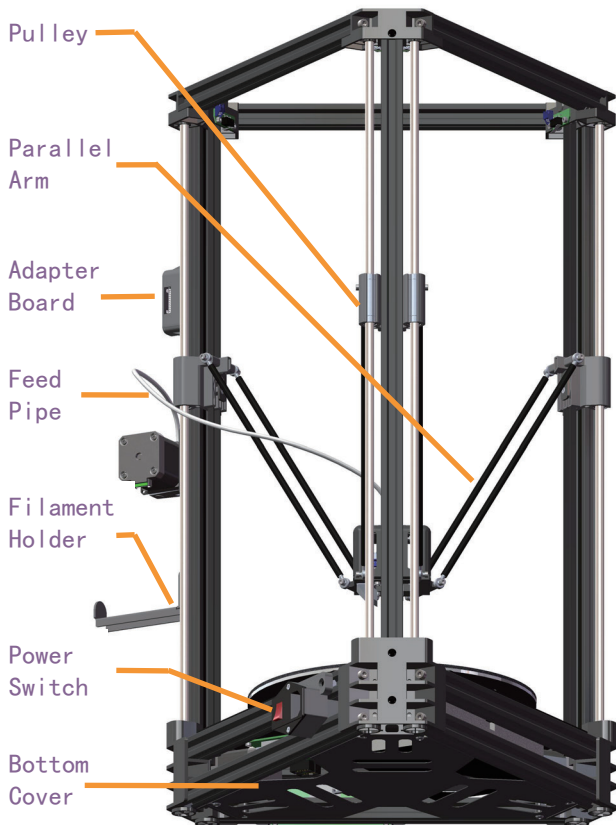




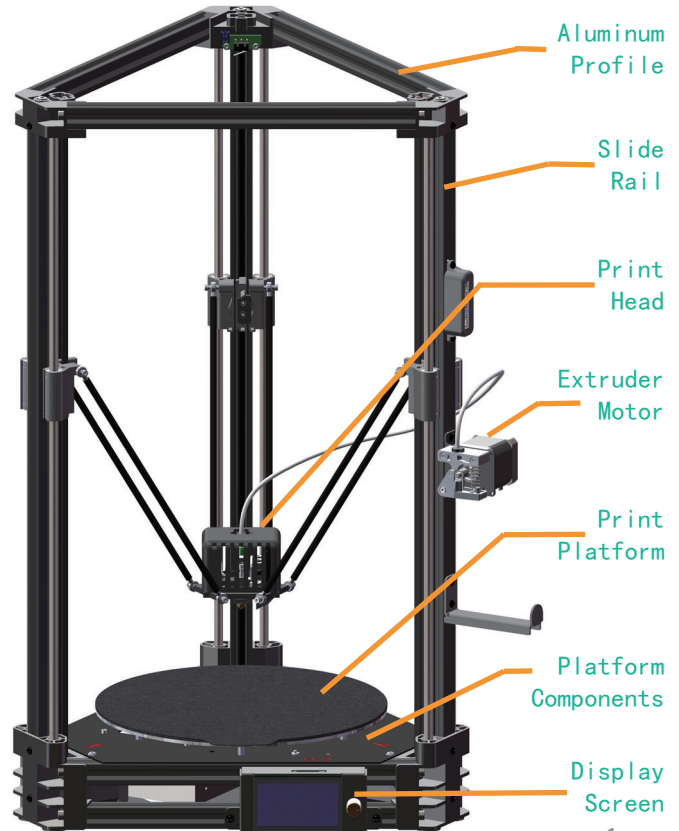
Vulcan 3D Printer installation instructions

- 1. It is suggested to use a flat desktop and place the parts in an orderly manner for quick assembly.
- 2. Each step has assembly diagram and tips. Please read the installation techniques and precautions before assembly.
- 3. The real color and size of some parts may be different from that in the manual, but the assembly method is the same.
- 4. Firmware has been uploaded to the motherboard in factory. After completing the assembly, please level the platform and load the filament then you could start the first test print.

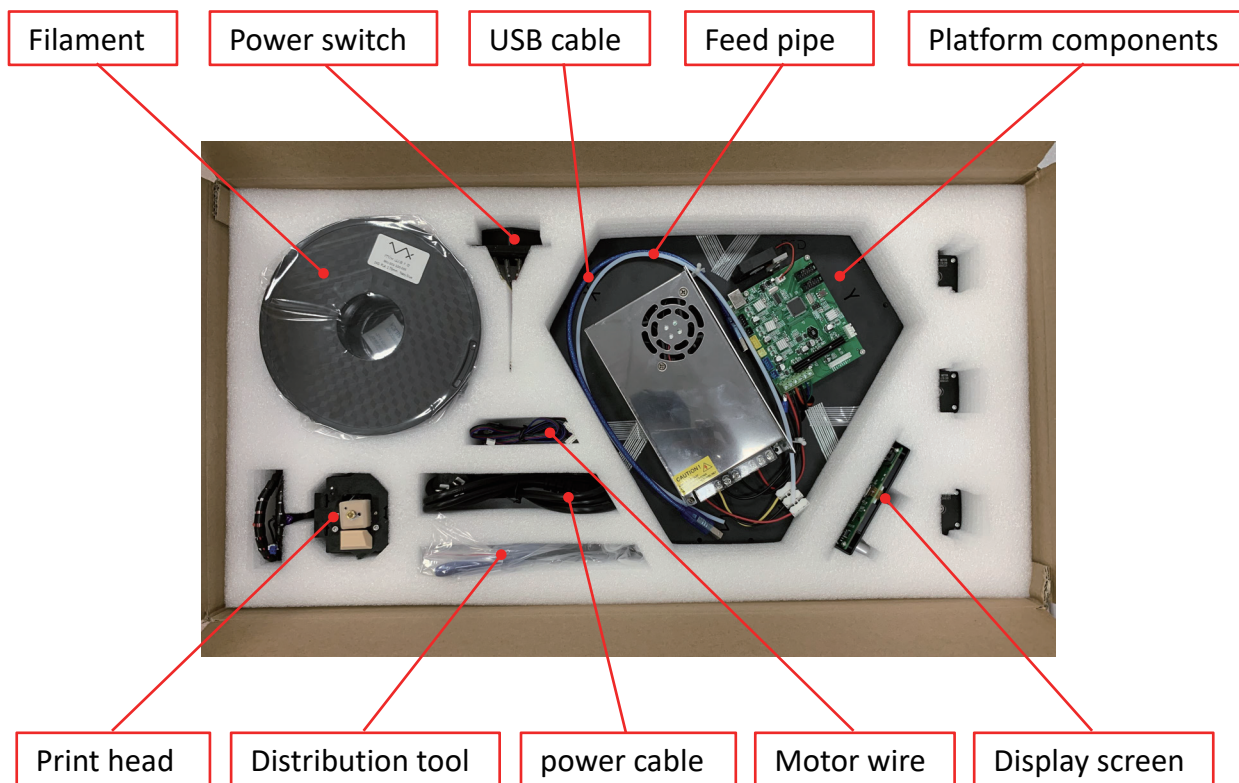
BACK



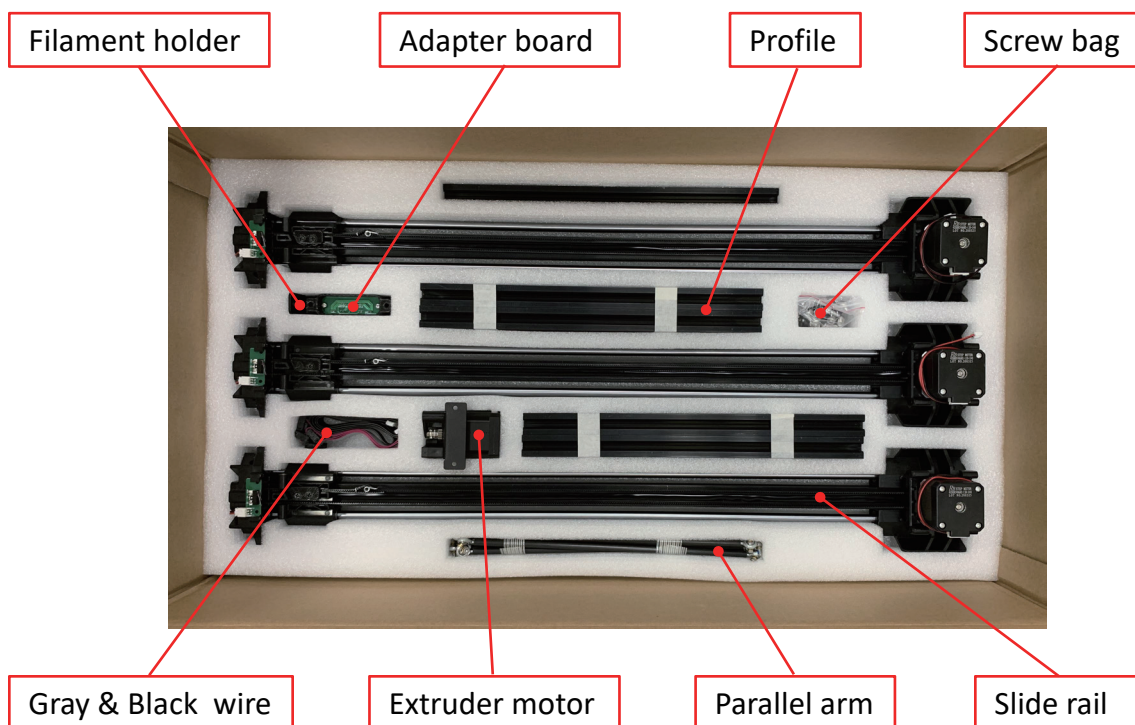
FRONT



Machine unboxing - top



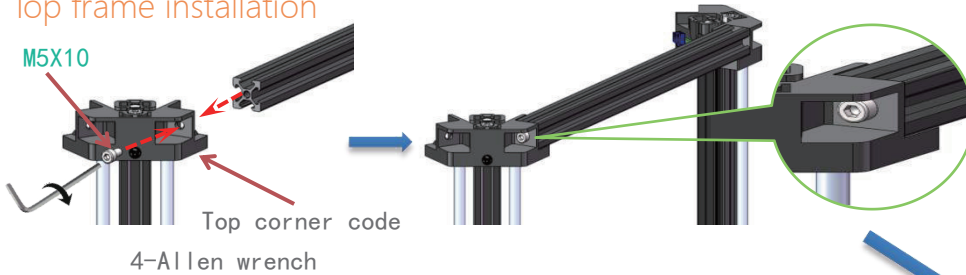
Machine unboxing - bottom



- ① The installation of the frame is divided into two parts;
- ② Insert the aluminum profile into the slots of the corner code separately;
- ③ M5X10 screws, use a 4mm allen wrench to lock the corner code and aluminum profile;
- ④ Repeat the operation and the final result is shown in the picture on the right.



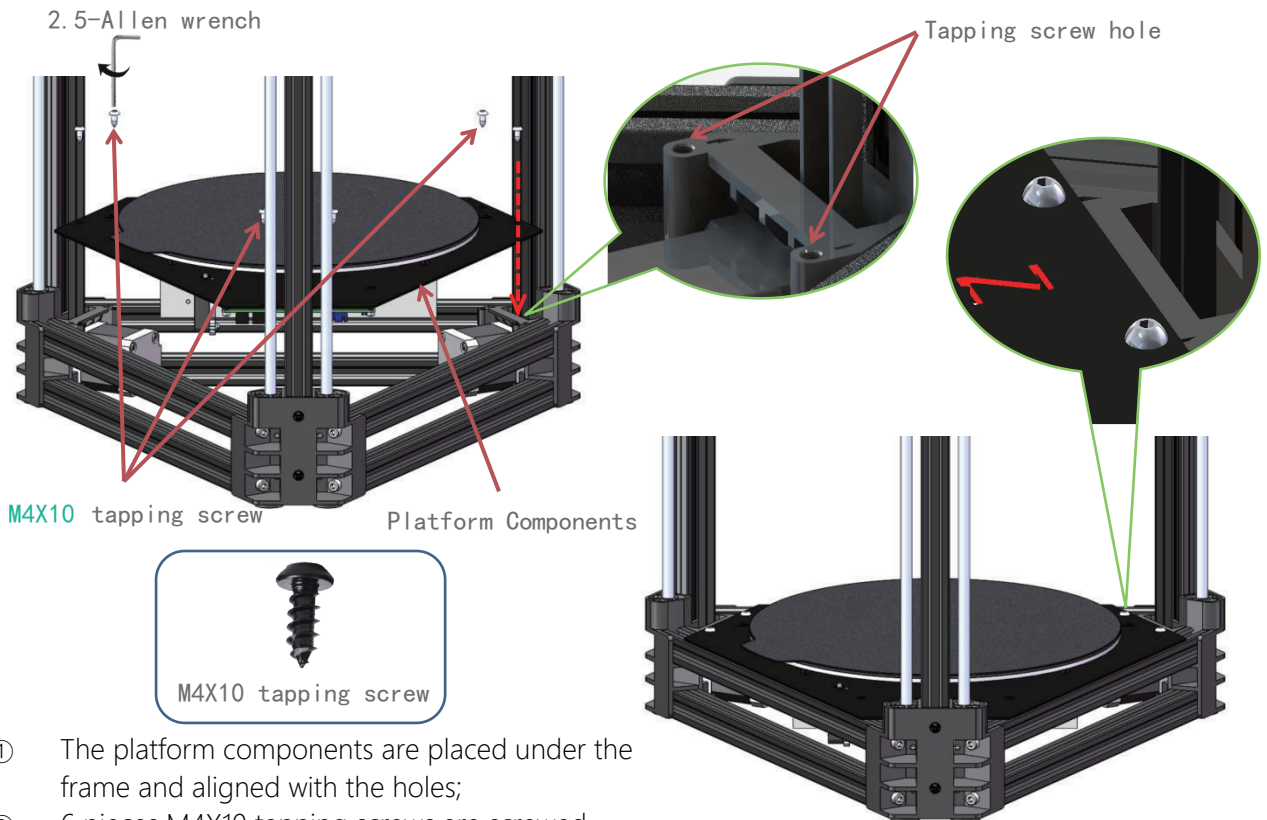
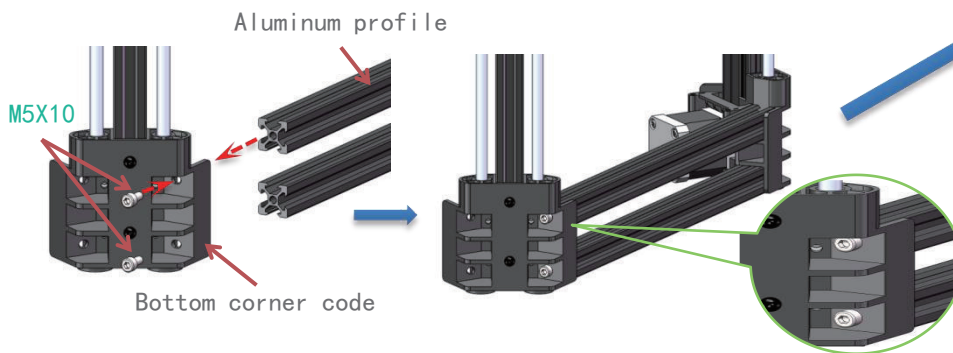
Top frame installation



The whole frame



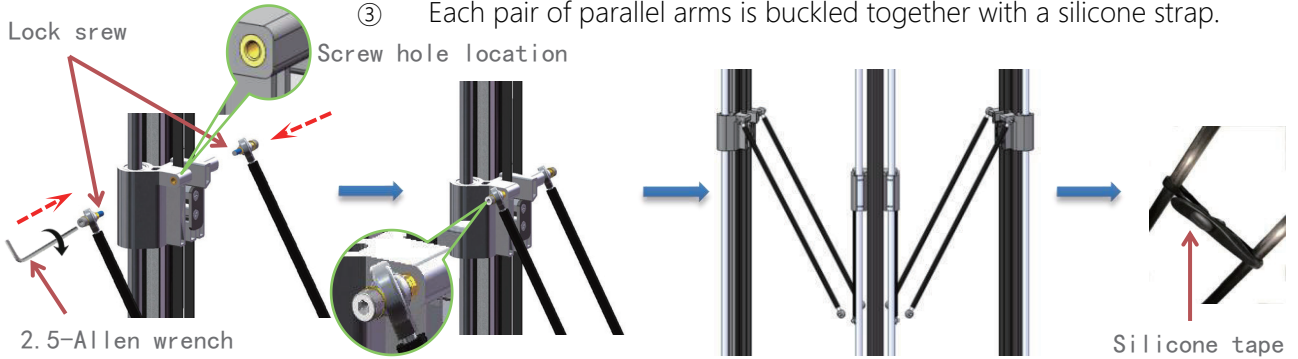
Bottom frame installation



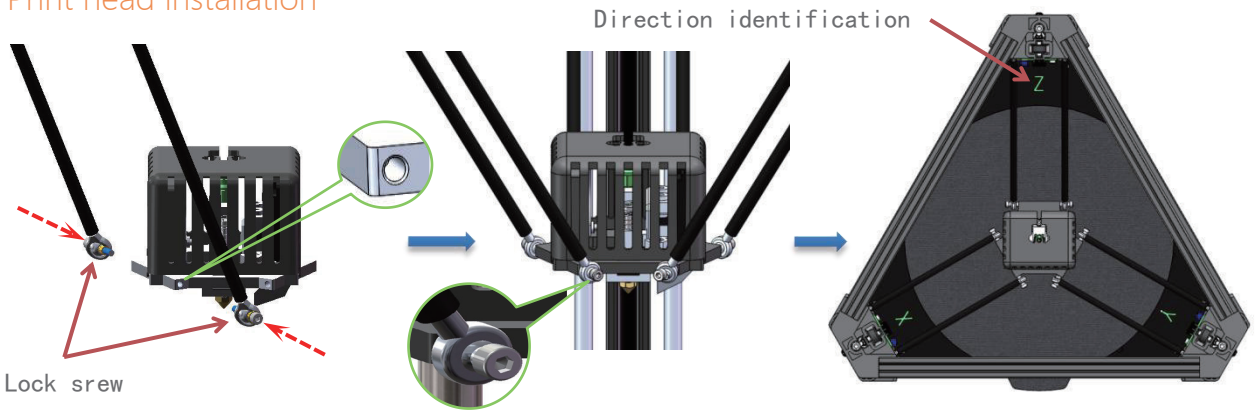
- ① The platform components are placed under the frame and aligned with the holes;
- ② 6 pieces M4X10 tapping screws are screwed vertically into the plastic parts for locking.

Pulley installation

- ① Each end of a pair of parallel arms is locked with lock screw;
- ② Repeat the operation to the remaining two pairs and interlocking lock;
- ③ Each pair of parallel arms is buckled together with a silicone strap.

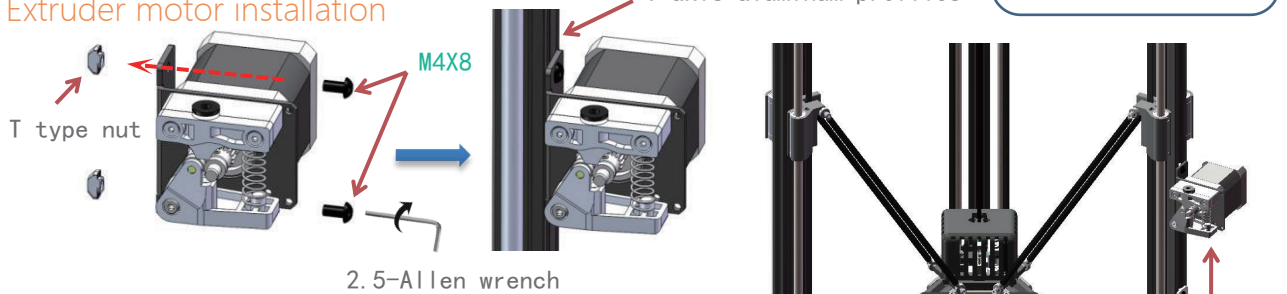


Print head installation

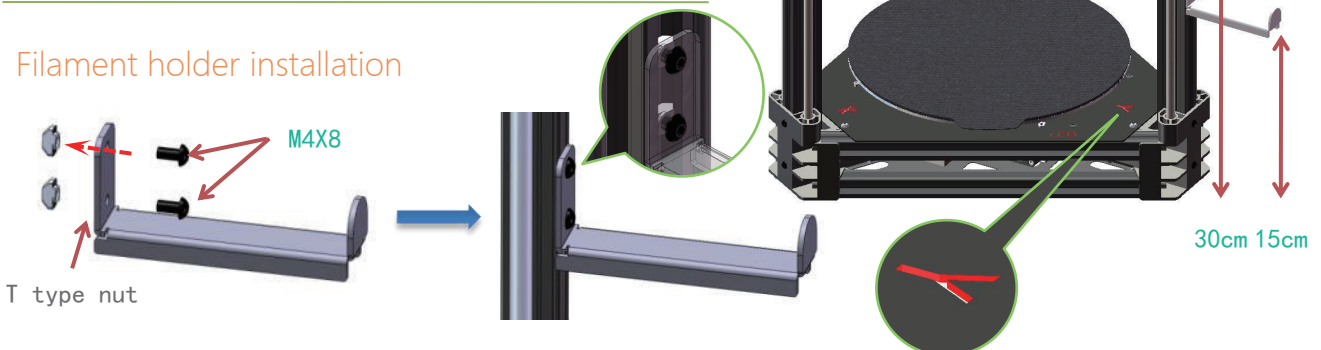


- ① Use M4X8 screws and T-nuts to install the Extruder motor and Filament holder on the Y-axis aluminum profile;
- ② The installation height is about 30cm and 15cm away from the bottom surface. Lock the screws.

Extruder motor installation

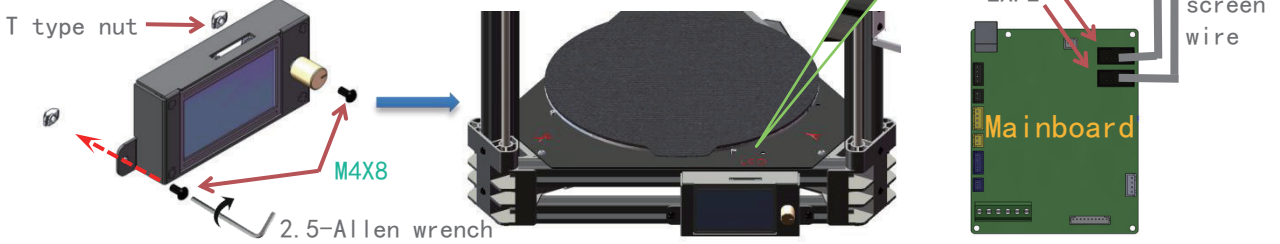


Filament holder installation

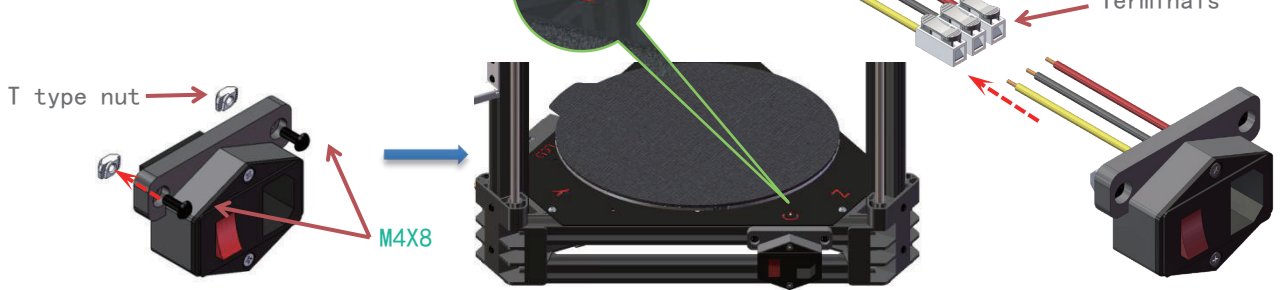


- ① Use M4X8 screw and T-nut;
- ② Mount the screen and switch separately to the bottom aluminum profile;
- ③ Connect the display and the motherboard with a gray cable;
- ④ The wires on the socket are inserted into the terminal blocks corresponding to the colors.

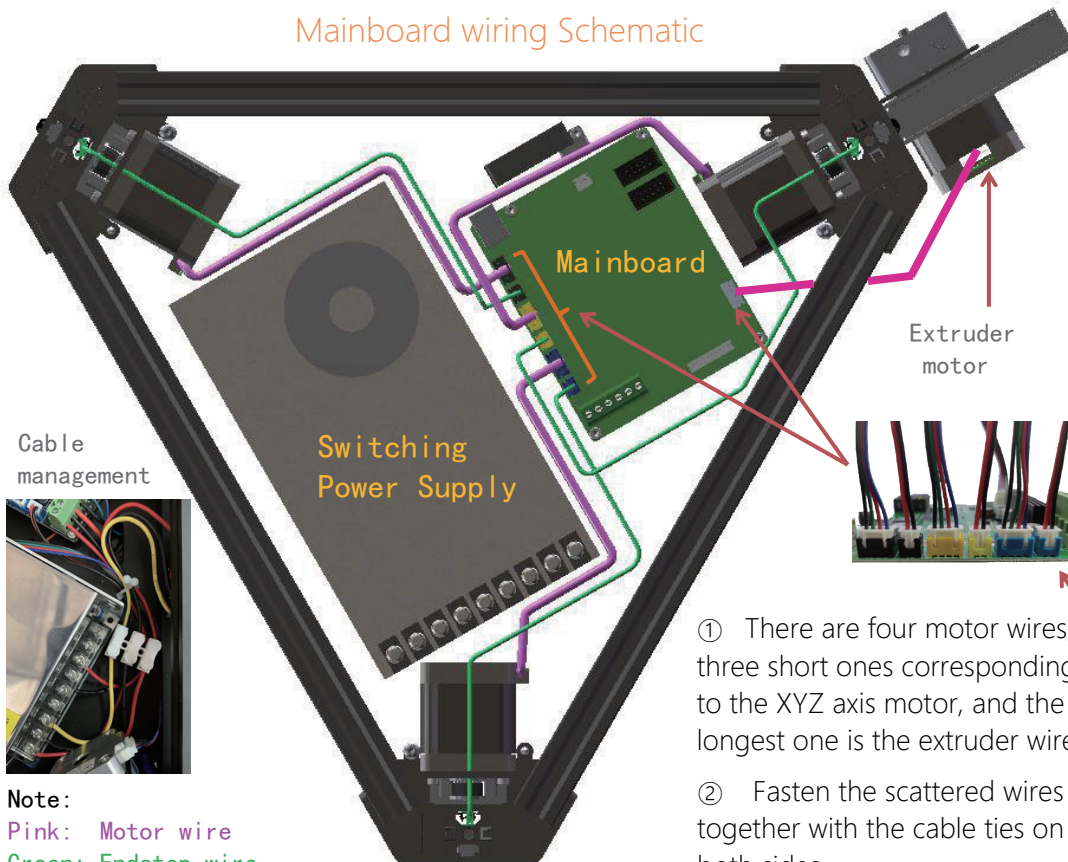
Screen installation



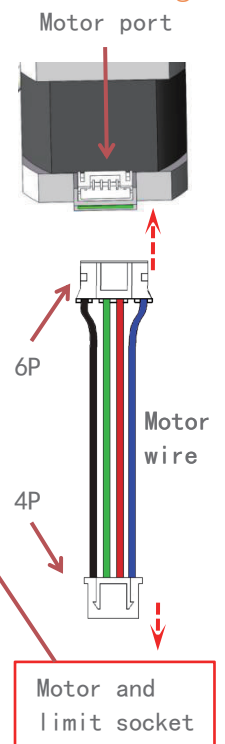
switch installation



Mainboard wiring Schematic



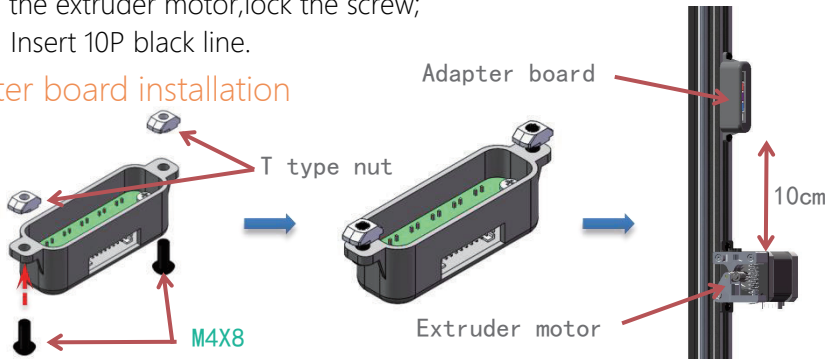
motor wiring



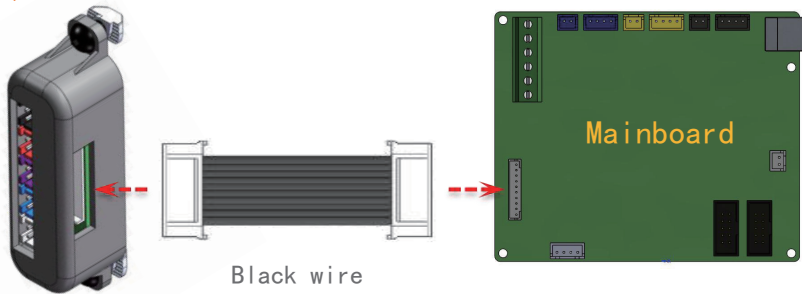
- ① There are four motor wires, three short ones corresponding to the XYZ axis motor, and the longest one is the extruder wire;
- ② Fasten the scattered wires together with the cable ties on both sides.

- ① M4X8 screws pass through the holes of the shell;
- ② Screw the t-nut into a part of the screw so that the direction of the nut is flat;
- ③ Put into the groove of the aluminum profile, the installation height is about 15cm away from the extruder motor, lock the screw;
- ④ Insert 10P black line.

Adapter board installation

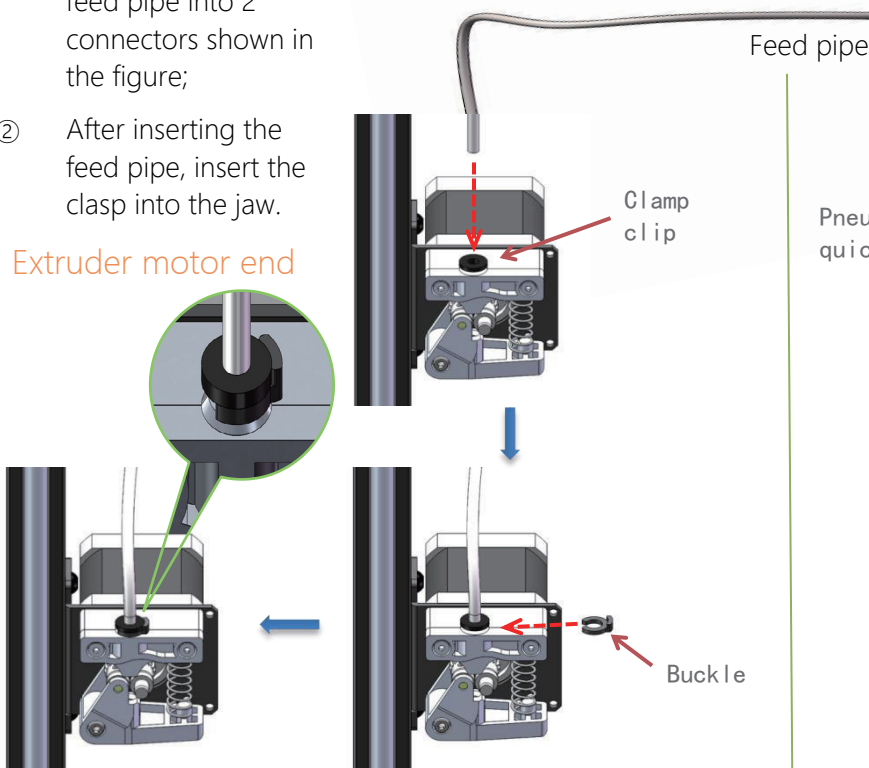


Adapter board—Mainboard

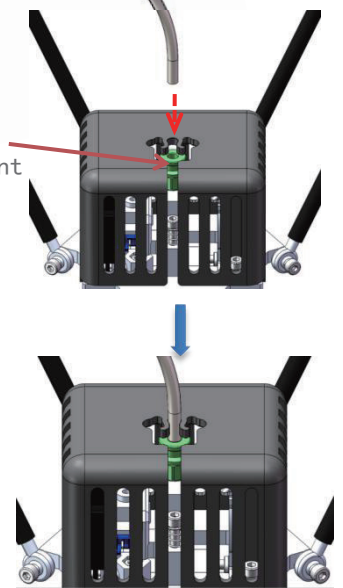


- ① Insert two ends of feed pipe into 2 connectors shown in the figure;
- ② After inserting the feed pipe, insert the clasp into the jaw.

Extruder motor end



Print head end



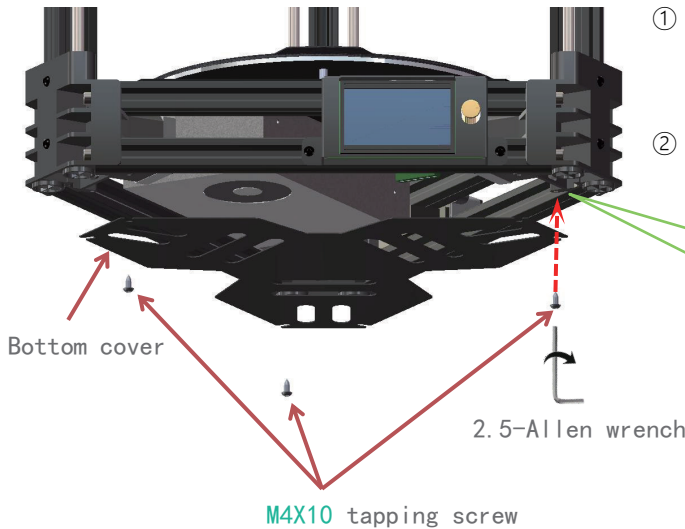


- Note:
- Black: heating tube
 - Red: temperature tube
 - Purple: auto-leveling switch
 - Blue: turbofan
 - White: square fan

Wiring harness of Print head assembly

Traces

- ① Insert the Print head assembly wiring harness with corresponding color into the adapter board one by one;
- ② Tie the wire harness to the material tube with a cable tie.



- ① After all the wires are installed, the bottom cover is aligned with the screw holes on the bottom;
- ② Three M4X10 tapping screws lock one at each corner.

Tapping screw hole

END