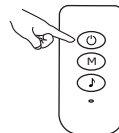


Specifications:

Product name	Smart Wifi controller for LED strip light
Supported platform	Android· IOS
Material	ABS
Remote Control info	Infrared, 24 Keys
Power Input	DC 5V-24V

1

1.3-button controller



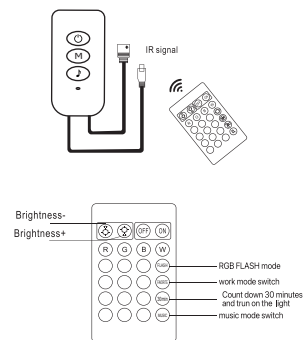
M: Click to change scene mode.

O: Click to turn on/off the lights; press for 5 seconds to reset and connect to the network.

J: Click to activate music mode.

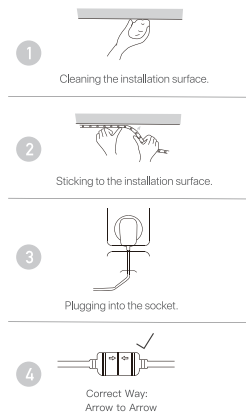
2

2.Remote controller



3

Product Instructions



4

Connection Instruction

1. Download the App

Please download "PlusMinus" from App Store, Google Play or our website (www.plusminus.ai/app). You can also scan the QR below to download the App.



2. Register & Login your PlusMinus account

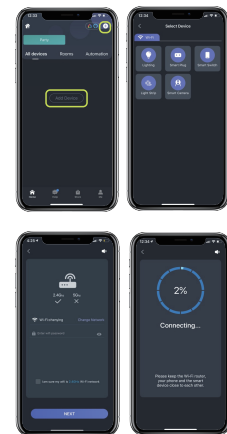
Fill in necessary information to have access to your account.

5

3. Add the device

1. Press and hold O button for 5 seconds until lights are fast blinking;
2. Open the App and click "Add Device" at upper right corner and choose the type "Lighting";
3. Make sure your phone is connected with 2.4Ghz WiFi and fill in the password; click "NEXT", pairing process gets start.

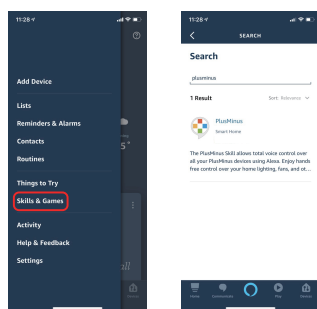
6



7

How to connect to Alexa

- 1.Add devices in "PlusMinus" app;
- 2.Launch "Amazon Alexa" choose "Skills" from menu;



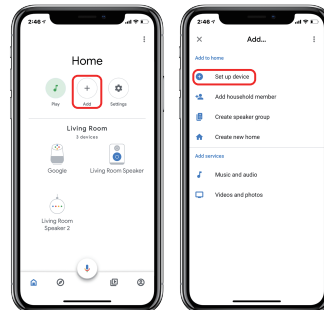
8

- 3.Search "PlusMinus" skill and click "ENABLE";
4. Enter your "PlusMinus" Account and Password, then click "Link Now";
5. Control devices by voice. "Alexa, turn off the light." "Alexa, turn on the living room lights."

How to connect to Google Home

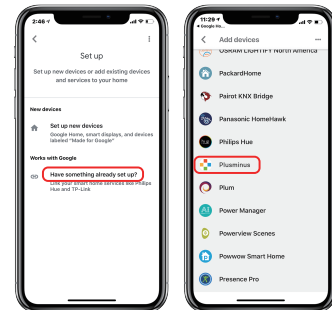
1. Add devices in "PlusMinus" app;
2. Launch "Google Home" and click the "Add" and then "set up device"

9



10

3. Click "Have something already set up?" and find "PlusMinus" in the list, enter your "PlusMinus" Account and Password, then click "Link Now";

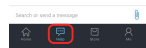
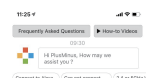


11

4. Control your smart devices through Google Home.

Customer service and FAQ

If you have any more questions contact us inside the PlusMinus App



12

Troubleshooting Frequently

Asked Questions

- 1.Failed to connect device, what should I do? Double check that phone is connected to a 2.4GHz Wi-Fi band. Confirm the entered Wi-Fi password is correct. And the device is in setup mode(indicator light blinking).
- 2.How to connect to 2.4GHz Wi-Fi ? Most smart home devices only support 2.4 GHz Wi-Fi band. Usually the 5 GHz Wi-Fi band has '5'or '5G' in its name, do not connect to that one. You can also log into your Wi-Fi router's admin page on web browser to turn off 5 GHz Wi-Fi. Or please find another phone device. Turn off your current Wi-Fi router, then use the phone as a Wi-Fi hotspot, set the hotspot name and password exactly the same as your main Wi-Fi router. Keep both phones and your smart device close together.

13

After it is connected, turn off your hotspot and turn on your main Wi-Fi router, the smart device will connect to the Wi-Fi router, as they are the same name and password.

- 3.The Smart Wi-Fi device appears offline, what should I do? Check the electric power and make sure that it's power on. Make sure you are connected to the same Wi-Fi network to control it locally. Reset the Smart device and reconnect it to your Wi-Fi network.

- 4.How do I pair the Smart Wi-Fi LED light strips with Amazon Echo? For pairing instructions, please register account and follow the installation steps inside app.

14

For tutorial video, please search "How to set up a music smart light strips" on YouTube.

The friendly and professional support team are at your service 24/7;

Products are with our worry-free 12-month warranty.

Website: www.lumiman.com

**1 year
warranty**

Tech Support Email:
support@lumiman.com

15