

AIYIMA[®] AUDIO

**Bluetooth 5.0
Digital Decoding Preamplifier**

USER MANUALS

Model: T10

Shenzhen Yima Technology Co.,Ltd

Website: www.aiyima.com

Telephone: 86-0755-28268551

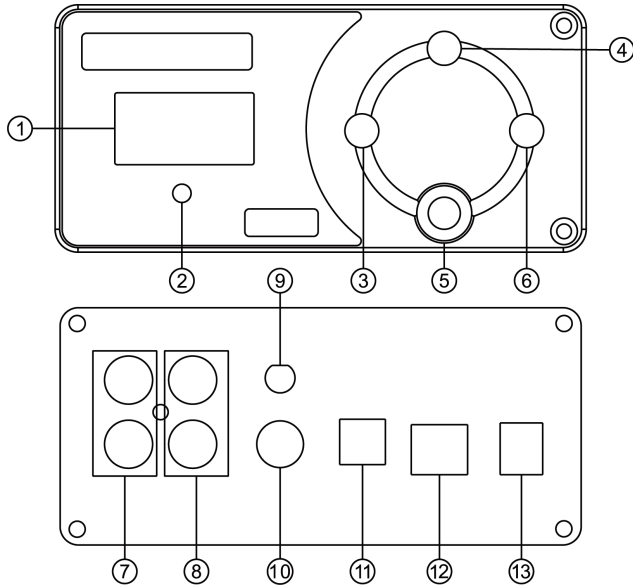
Location: 4F, Building 7 Hekan industrial park. Wuhe south road 41. Long-Gang district.

ShenZhen. CHINA. 518000

Email: sale@aiyima.com

VK: <https://vk.com/aiyima>

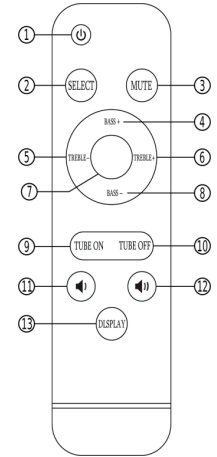
Front And Rear Panel Description



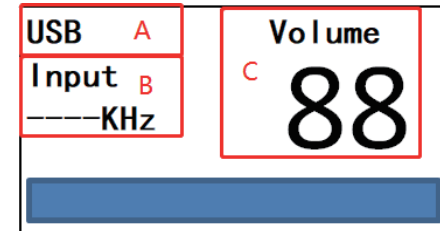
- ① ——— OLED Display
- ② ——— IR receiving window
- ③ ——— Volume down
- ④ ——— On / OFF key (short press to power on / working state, short press to switch channels / long press to power off, Double click to adjust the bass volume / double click again to adjust the treble volume)
- ⑤ ——— Headphone output
- ⑥ ——— Volume up
- ⑦ ——— Analog RCA output (red: right channel, white: left channel)
- ⑧ ——— Analog RCA input (red: right channel, white: left channel)
- ⑨ ——— Bluetooth antenna socket
- ⑩ ——— Coaxial input
- ⑪ ——— Optical input
- ⑫ ——— PC-USB input
- ⑬ ——— Power interface (DC voltage shall not be higher than 12V)

Functions Of Remote Control Buttons

- ① ——— ON/OFF
- ② ——— Input channel selection
- ③ ——— Mute
- ④ ——— Bass +
- ⑤ ——— Treble -
- ⑥ ——— Treble +
- ⑦ ——— Empty
- ⑧ ——— Bass -
- ⑨ ——— Tube ON
- ⑩ ——— Tube OFF
- ⑪ ——— VOL -
- ⑫ ——— VOL +
- ⑬ ——— OLED ON/OFF



OLED Display Description



- A ——— Input channel display area, display separately according to selection USB/BT/COA/OPT/RCA
- B ——— Input sampling rate display area, no signal displayed
- C ——— Volume display area, Volume 0-99
- D ——— The bottom is the volume progress bar

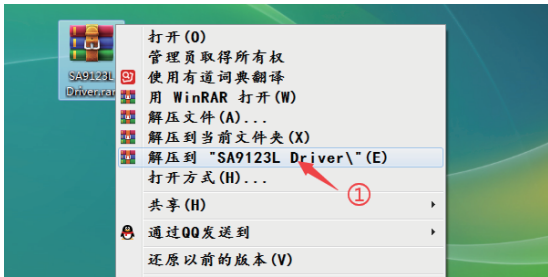
Operation Steps

1. Install the electronic tube delivered with the product into the electronic tube base according to the direction (the electronic tube is not divided into left and right. Before installing the electronic tube, check whether the pin is deformed. If it is deformed, it can be corrected by hand).
2. Connect the audio source you need to use to the audio source input interface (switch the input channel to Bluetooth input when connecting Bluetooth)
3. Connect the back-end equipment that needs external connection to the audio source output interface (such as power amplifier, active speaker, etc.)
4. Connect power supply (DC voltage shall not be higher than 12V)
5. Short press the start key to start the machine, and then short press the start key again to switch to the corresponding input channel to be used .
6. Press the volume key to select the desired volume .

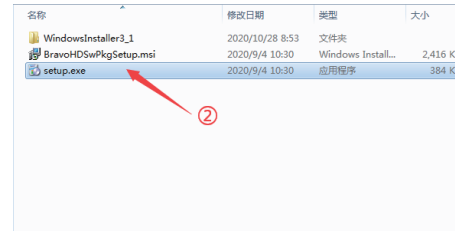
PC-USB Operation Instructions

1. Connect the PC-USB interface to the computer using the USB cable configured by the factory (USB supports hot plugging).
2. Press the input selection key to PC-USB input, and install the driver on the PC side. (Please contact our company for installation documents)

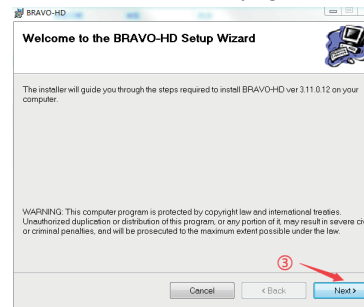
Installation steps are as follows:



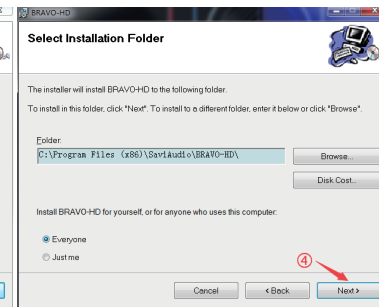
After finding the installation file, right-click the "SA9123L Driver" file as shown in the figure, and click "Unzip to SA9123L Driver";



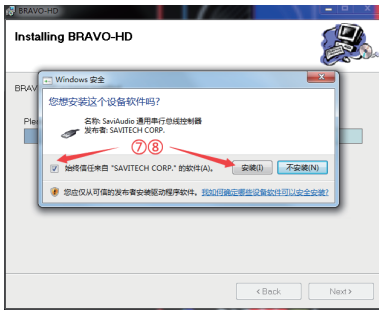
After unzipping, double-click "Setup.exe" to run the installation program;



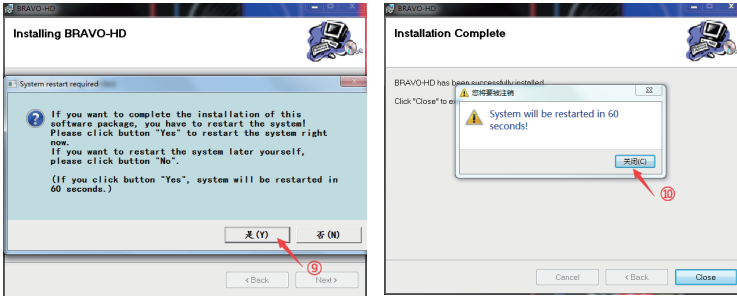
During installation, click "Next"



When prompted "Would you like to install this device software?", please check "Always Trust..." And installation;



When the installation is completed, the system will prompt you to restart. Click "Yes" and wait for the restart to complete.



3. After the restart, find the speaker symbol in the bottom right corner of the desktop, right click the pop-up dialog box, and click 【Play Device】.



4. Select the USB device recognized by PC in the pop-up dialog box
5. Click to confirm the recognized digital output and set it as the default.

Specification Parameters

PC-USB Supports Sample Rate	192K/24bit		Frequency Response	RCA:±0.2dB /HP: ±1dB
Optical And Coaxial Support Sampling Rate	192K/24bit		THD	RCA:0.08%/HP:0.05%
PC-USB Supports Operating System	W7/W8/W10 /MAC/Linux		SNR	RCA:108dB/HP:106dB
Headphone Impedance Matching	16-300Ω		Input Sensitivity	2V
	RCA	HP	Working Voltage	DC 12V
Output (Tube ON)	2.2V	140mW	The Weight	0.93kg
Output (Tube OFF)	2.5V	180mW	Packing Size	L283*W230*H80mm
Bluetooth Version	5.0			

Common Problem

Q: All my wires are connected. Why is there no sound?

- A:
1. Check whether the machine is turned on and whether it has switched to the corresponding input channel.
 2. Check whether the back-end connection is correct and whether the volume is in the minimum state.
 3. If all the above are normal, check whether the input playback device is silent, paused, or the volume is at its minimum.

Q: Why can't I search for Bluetooth pairing names?

A: Due to the design of this machine, Bluetooth does not work when using other channels for input. You just need to switch the input to Bluetooth mode.

Q: Why does the sound break?

A: Although this product is the front stage of DAC, it also has the function of amplification. If the volume of the rear stage device is turned up to the maximum, the volume of the front stage is also turned up to the maximum, which is easy to distortion. At this time, you just need to turn down the volume of the front stage or the rear stage.

Q: Why is there a lot of electrical noise from the horn?

A: If you are not using the original standard power supply, please replace the power supply and test again. Many power supply ripple interference factor is large will cause a lot of current sound.

Q: Why does the speaker make a loud buzzing sound when I plug in the input cord and don't play the audio source?

A: when the signal line without shield is used, the interference signal will enter the power amplifier for amplification. Replacing the signal line with shield can effectively solve the interference sound, or unplug the signal line.

Q: Why the machine bought back to listen to the sound is very hard, the frequency response is not very clear, but work day 1 day after the normal?

A: vacuum tube is a very sensitive device, the temperature generally to reach a degree to play the best effect, so the general boot after about half an hour of preheating the sound is very natural.

Q: Can I replace the valve and upgrade?

A: Yes, at present, we have tested and matched 6J1/6J4/ GE5654/6ak5/6 *1n, which can be directly replaced. The sound of different vacuum tubes will be very different.

Q: Can I replace the vacuum tube by direct unplugging?

A: No, because the inside of the machine is working at high pressure, the hot plug vacuum tube burnt out may damage the machine.

Q: Can this machine be connected to a phonograph / record player?

A: can't, phonograph/record player needs special amplification circuit, this machine Design does not have this function.

Warning

1. Do not open the shell without permission. Improper operation may cause electric shock.
2. Please use the regular manufacturer's switching power supply, otherwise there will be the risk of damage to the machine.
3. Do not place the machine in a high temperature and humidity environment.
4. Please do not unplug and replace the vacuum tube when it is energized, otherwise it will burn out your vacuum tube and machine.
5. Do not replace the valve model that does not match, or it will burn out your valve and machine.