

**AIYIMA<sup>®</sup> AUDIO**

**Bluetooth 5.0 DAC Decoder**  
USER MANUALS

**Model: DAC-A6**

**Shenzhen Yima Technology Co.,Ltd**

Website: [www.aiyima.com](http://www.aiyima.com)

Telephone: 86-0755-28268551

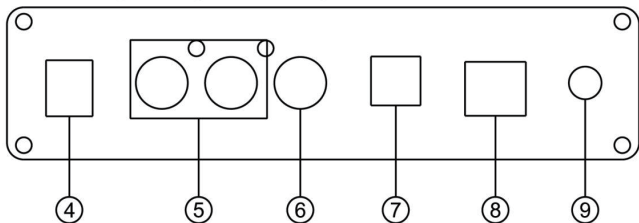
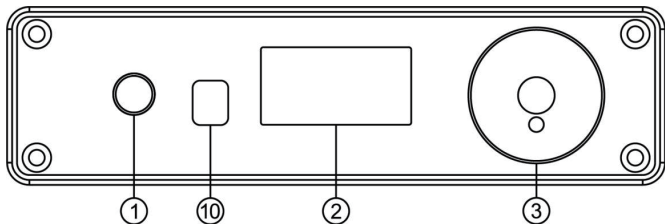
Location: 4F, Building 7 Hekan industrial park. Wuhe south road 41. Long-Gang district.

ShenZhen. CHINA. 518000

Email: [sale@aiyima.com](mailto:sale@aiyima.com)

VK: <https://vk.com/aiyima>

## Front And Rear Panel Instructions



- ① ——— Switch machine on and off (short press: power on, switch channels, long press to shut down)
- ② ——— Display
- ③ ——— Encoder Knob (Left/Right Rotate for Volume Decrease or increase /Short Press for Mute)
- ④ ——— Power interface (DC 12V)
- ⑤ ——— RCA output interface (red /R, white /L)
- ⑥ ——— Coaxial input interface
- ⑦ ——— Optical input interface
- ⑧ ——— PC-USB input interface
- ⑨ ——— Bluetooth antenna seat
- ⑩ ——— Infrared receiving window

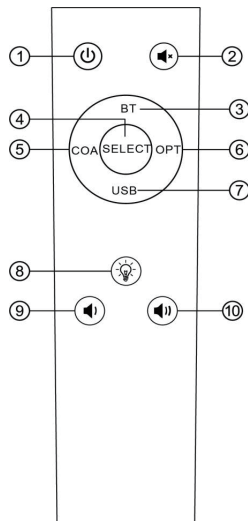
## Operation Steps

1. Connect the rear power amplifier that needs external connection to the audio source output
2. Connect the audio source you want to use to the audio source input interface.
3. Short press to power on, and press again to switch the input channel.
4. Rotate the decoder knob to select the desired volume.

1

5. Bluetooth mode, need to switch to BT channel, can be paired connection
6. After use, long press 3 seconds power off.

## Remote Control Function Description

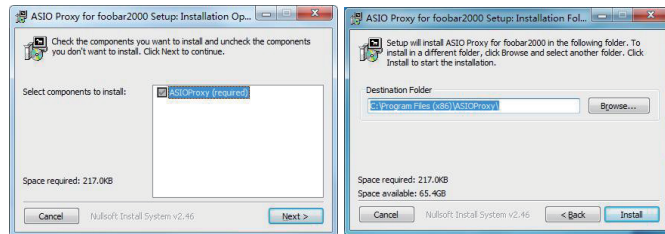


- ① ——— Power on / off
- ② ——— Mute
- ③ ——— Bluetooth input
- ④ ——— Input channel selection
- ⑤ ——— Coaxial input
- ⑥ ——— Optical fiber input
- ⑦ ——— PC-USB input
- ⑧ ——— Display on / off
- ⑨ ——— Volume down
- ⑩ ——— Volume up

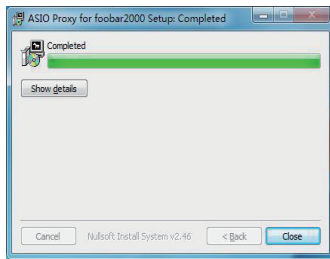
## PC Driver Installation Method

### 1. ASIO Driver installation:

Double click on the ASIOProxyInstall-0.6.5, Then follow the prompts to install. Restart your computer when the installation is complete

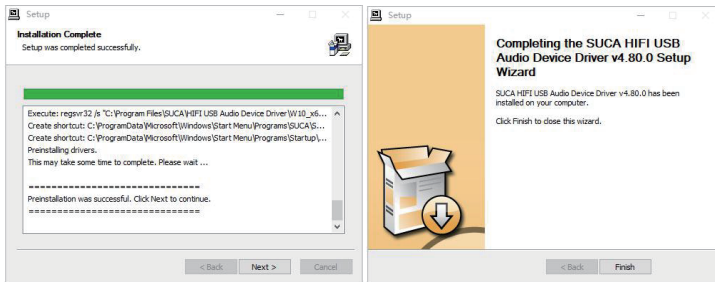
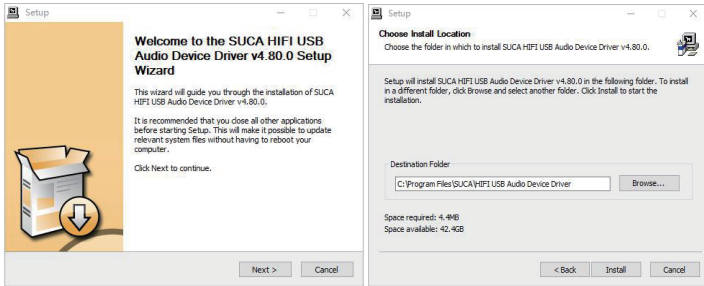


2

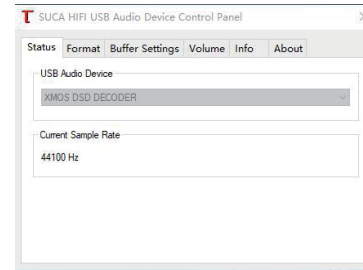


## 2. Thesycon driver installation:

Double click on the SUCA\_UsbAudio\_v4.80.0\_2019-12-09\_setup, Then follow the prompts to install,

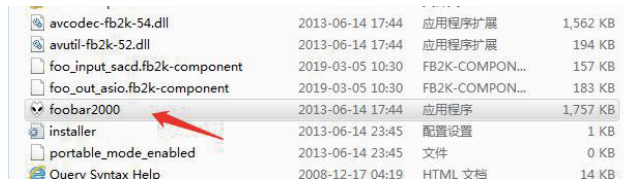


After installation, open the driver and the following dialog box appears

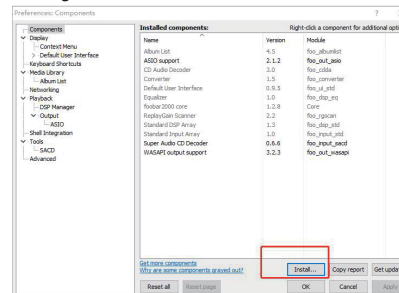


## 3. Foobar player installation:

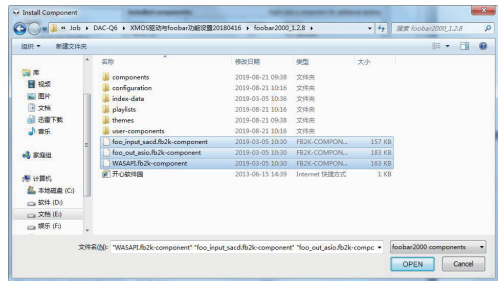
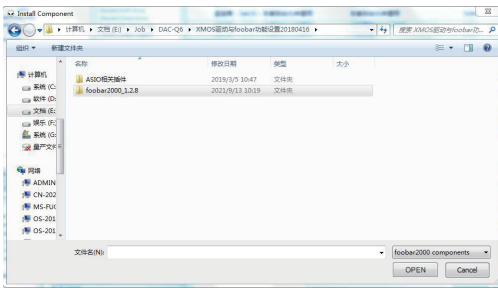
It is free of installation, Double click open foobar2000 folder



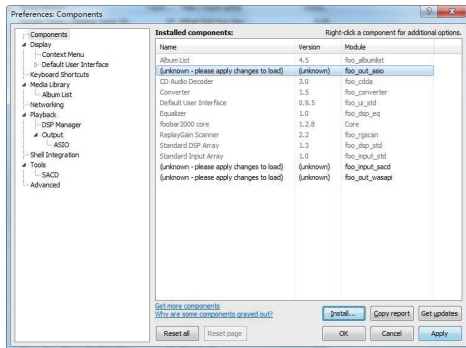
After open the foobar2000, click Top left File, choose Preferences, Click Components, Click again Install



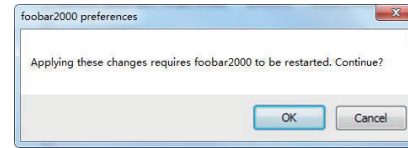
Find the path in the dialog box that is displayed : `foo_input_sacd.fb2k-component`, `foo_out_asio.fb2k-component`, `WASAPI.fb2k-component`. Three file storage paths



At the same time selected fooi\_input\_sacd.fb2k-component, fooi\_out\_asio.fb2k-component, WASAPI.fb2k-component Click open after three files, Click Apply and then OK

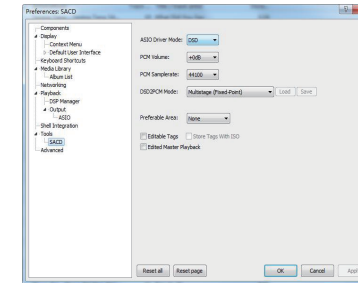
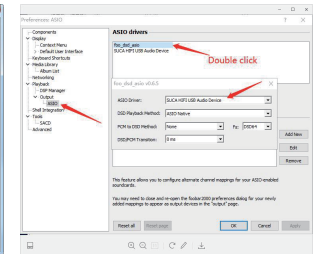
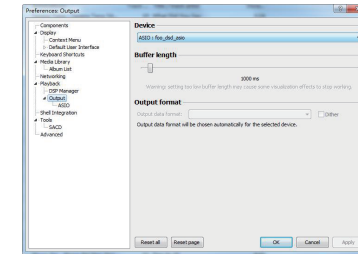


## Click Apply



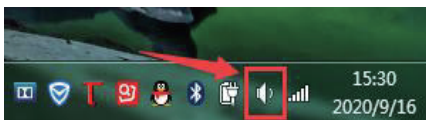
## Click OK

Open foobar2000, Click Library choose Configurer Click output again, Then in the Device bar on the right, select ASIO: fooi\_sacd\_asio



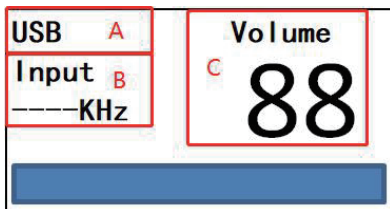
## PC-USB Operation Instructions

1. Connect the PC-USB interface to the computer with the USB cable configured by factory (USB supports hot plugging).
2. Press on/off button to switch to USB channel
3. As shown in the figure, find the icon with horn symbol in the lower right corner of



4. Right click the pop-up dialog box and click 【Playback devices】 .
5. Select the USB device recognized by PC from the pop-up dialog box.
6. Click the recognized digital output and set it as the default.

## OLED Show



- A ———— Input channel display area, display separately according to selection USB/BT/ COA /OPT
- B ———— Input sampling rate display area, no signal displayed
- C ———— Volume display area, Volume 0-99
- D ———— The bottom is the volume progress bar

## Specification Parameters

PC-USB Supports The Highest Sampling Rate	PCM 768KHz/32Bit DSD512	Bluetooth Support	APT-X HD/ APT-X LL/LDAC
Coaxial Support For Maximum Sampling Rate	PCM 192KHz/24Bit	Frequency Response	10Hz-40KHz(±0.3dB)
Optical Fiber Supports The Highest Sampling Rate	PCM 192KHz/24Bit	THD	0.0006%
PC-USB Supports An Operating System	W7/W8/W10/ MAC/linux	SNR	≥117dB
Working Voltage	DC 12V	Packing Weight	Weight 0.72kg
Analog Output Level	2.4V	Packing Size	L260*W230*H60mm
Bluetooth Core	5.0		

## Remote Control Function Description

### Q: All the cables are connected, but no sound output?

- A:** 1. Check whether the display screen is bright or not. If the display screen is still not bright after starting up, you can find an output of the same voltage (must be DC12V) in the test to determine the machine failure or power failure. If the display screen is bright, check whether the corresponding input signal is correctly selected.
2. If there is still no sound after all the above checks, please check the digital display Volume status of the display. If the volume value is too low, turn the encoder knob to the right to increase the volume.
3. If both of the above are normal, check the input device if it is paused, mute, or the volume is minimized

### Q: Why does the sound is cracking ?

- A:** This product is for the DAC decoder, but also can be used as preamp, If post equipment is max volume & preamp too, it's easy to distortion, you just need to turn down the volume of the equipment, then ok.

### Q: Why do loudspeakers make a lot of electric noise?

- A:** If you are not using the original factory standard power supply, please replace the power supply before testing. Many power supply in the market have large Interference coefficient, which will cause a lot of current sound

### Q: Why the speaker has drone when I just plug in the input cable, but don't connect the sound sources?

- A:** If you use unshielded signal lines, there will be interference signals entering the power amplifier. If you hate the sound, you are advised to use the shielded signal lines or unplug the signal lines.

### Q: why there is no sound when PC-USB connects to PC?

- A:** First press the PC-USB operation to confirm whether the digital playback output has been selected. If still no sound, you can restart the computer and repeat the operation again.

### Q: Why can't I find the bluetooth pairing name?

- A:** the machine is designed to be energy efficient and environmental friendly. To use bluetooth, you must switch to bluetooth input mode to search for pairing.

### Q: Why not support DSD files and the sound is salsa?

- A:** playing DSD file does not support PC tuning volume, only the default maximum volume.

### Q: Does a driver need to be installed on a MAC?

- A:** no, the MAC system is drive free and can be used directlt.

### Q: I used to have a load driver. Do I need to uninstall it before I install it?

- A:** yes, be sure to install the original driver after unloading