

**AIYIMA<sup>®</sup> AUDIO**

## **Headphone DAC Decoder**

**USER MANUALS**

**Model: DAC-A5 PRO**

### **Shenzhen Yima Technology Co.,Ltd**

Website: [www.aiyima.com](http://www.aiyima.com)

Telephone: 86-0755-28268551

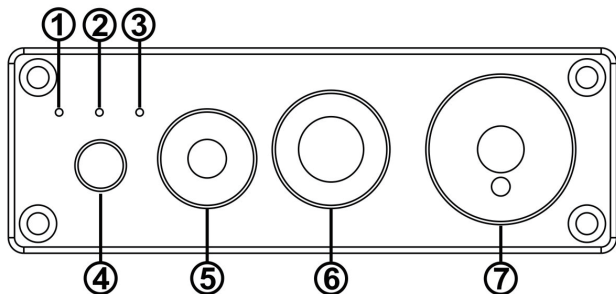
Location: 4F, Building 7 Hekan industrial park. Wuhe south road 41. Long-Gang district.

ShenZhen. CHINA. 518000

Email: [sale@aiyima.com](mailto:sale@aiyima.com)

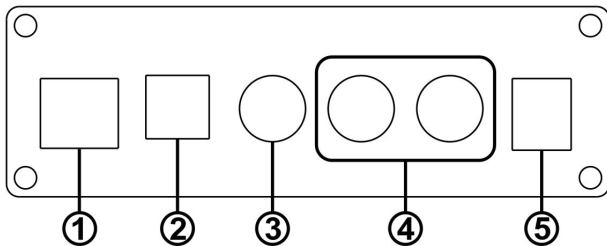
VK: <https://vk.com/aiyima>

## Front Panel Description



- ① ——— Coaxial input indicator light
- ② ——— Optical fiber input indicator light
- ③ ——— PC-USB Input light
- ④ ——— Switch machine/Input selection key (short press to start, short press again to switch input channel, long press to shut down)
- ⑤ ——— 3.5 Headphone output port
- ⑥ ——— 6.35 Headphone output port
- ⑦ ——— Encoder knob (clockwise volume increased, counterclockwise volume decreased, gently press mute)

## Back Panel Description



- ① ——— PC-USB input interface
- ② ——— Optical input interface
- ③ ——— Coaxial input interface
- ④ ——— Analog output interface
- ⑤ ——— Power interface (DC voltage shall not be higher than 12V)

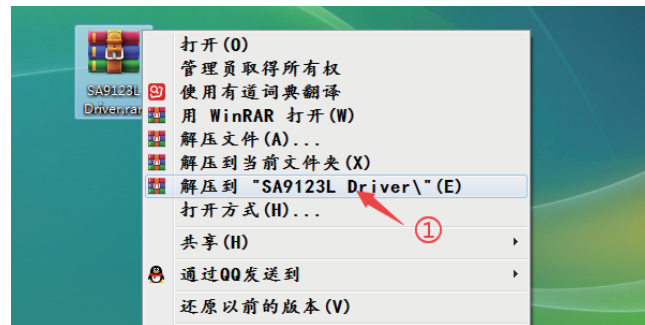
## Operation Steps

1. Make sure the volume is minimum (turn the knob counterclockwise and the COA lamp flashes to indicate that the volume is minimum).
2. Connect the back-end devices that need to be plugged in to the native audio source output interface.
3. Connect the audio source you need to use to the audio source input interface.
4. Connect to the power supply (using a factory supplied power supply or a DC with a voltage of 12V).
5. Short press the on key to start the machine.
6. Press the input signal selection key to select the access channel (PC-USB input is the default boot).
7. Turn the knob clockwise to select the desired volume, and tap the knob to mute it.
8. When the headset is connected, the RCA output automatically disconnects.

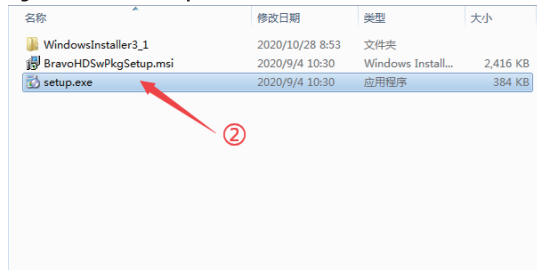
## PC-USB Operating Instructions

1. Connect the PC-USB interface to the computer using the USB cable configured by the factory (USB supports hot plugging).
2. Press the input selection key to PC-USB input, and install the driver on the PC side. (Please contact our company for installation documents)

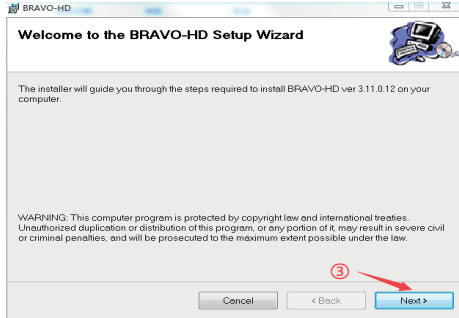
Installation steps are as follows:



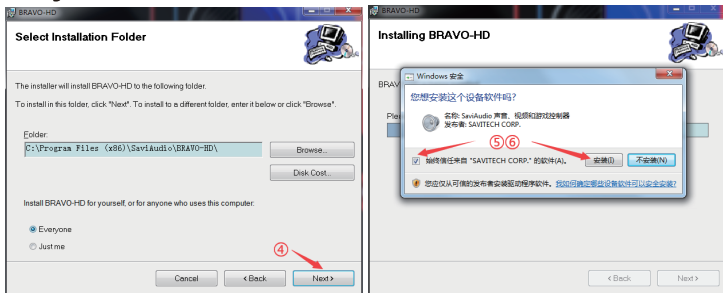
After finding the installation file, right-click the "SA9123L Driver" file as shown in the figure, and click "Unzip to SA9123L Driver";



After unzipping, double-click "Setup. exe" to run the installation program;



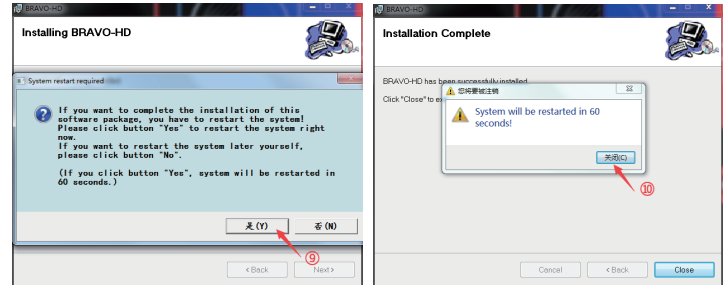
During installation, click "Next"



When prompted "Would you like to install this device software?", please check "Always Trust..." And installation;



When the installation is completed, the system will prompt you to restart. Click "Yes" and wait for the restart to complete.



3. After the restart, find the speaker symbol in the bottom right corner of the desktop, right click the pop-up dialog box, and click 【Play Device】.



4.Select the USB device recognized by PC in the pop-up dialog box,

5.Click to confirm the recognized digital output and set it as the default.

## Specifications

PC-USB Supported Sampling Rate	192K/24Bit	Frequency Response	20Hz-20kHz (-0.5dB)
Optical/Coaxial Support Sampling Rate	192K/24Bit	THD	0.005%
PC-USB Operating System Support	XP/W7/W8/W10/MAC/linux	SNR	≥116dB
Maximum Output Power of Ear Amplifier	500mW	Bare Machine Size	L148.5*W98*H33MM
Headphone Impedance Matching	16-600Ω	The Weight	0.33KG
Output Level	2V		
Working Voltage	DC 12V	Packing Size	L235*W210*H65MM

## Frequently Asked Questions

### Q: I have all the wires connected, but no sound output?

- A: 1. Check whether the POWER indicator light is on. After pressing the POWER button, it still does not turn on. If the POWER indicator is on, check whether the corresponding input signal is selected correctly.
2. If all the above are checked and there is no sound, check whether the volume knob is in the minimum state. If it is in the minimum state, it is normal to rotate clockwise
3. If the above two points are normal, check whether the playback device of input audio source is paused, mute or at the minimum volume

### Q: Why does the sound break?

- A: although this machine is DAC decoder before the product, also has the amplification effect. If the rear-level device volume is turned to full volume and the front level is also turned to full volume, then distortion is easy and you just need to turn down the volume of the front or rear level.

### Q: Why is there a lot of electrical noise from the horn?

- A: If you are not using the original standard power supply, please replace the power supply and test again. Many power supply ripple interference factor is large will cause a lot of current sound.

### Q: Why does the speaker make a loud buzzing sound when I plug in the input cord and don't play the audio source?

- A: used the signal line that does not take shield empty load, can have interference signal to enter amplifier to carry on amplification, if you hate this sound to suggest you replace the signal line that takes shield, perhaps unplug signal line.

### Q: Can the 6.35mm headphone output port receive the microphone?

- A: No, the headphone interface is the signal output interface, not the input interface.

### Q: Why does the volume stay the same, but the volume is different when connected to different sources (such as a CD and then a mobile phone)?

- A: The amplitude of the electrical signal varies from device to device. For example, a mobile phone is usually 0.35V and a CD is 1V. Natural sound levels are different.

### Q: Why is there no sound when PC-USB connects to PC?

- A: First, follow the STEPS of PC-USB operation to confirm whether the digital playback output /USB driver installation is correct. If there is still no sound, you can restart the computer and repeat the operation.

### Q: Why does digital input have no sound?

- A: Check the playback device, adjust the audio output format to the PCM source output.

### Q: Why are all my wires plugged in, but the RCA analog output has no sound?

- A: At this point, you should check whether the headphone output is plugged in or whether the adapter is plugged in. If so, you should unplug the headset or adapter to simulate the RCA output.

### Q: Why can't I search for bluetooth pairing names

- A: Considering the power consumption when the machine is designed, the user must switch to the Input mode of Bluetooth to search and pair it.

## Warning

1. Do not open the shell without permission. Improper operation may cause electric shock.
2. Please use the regular manufacturer's switching power supply, otherwise there will be the risk of damage to the machine.
3. Do not place the machine in a high temperature and humidity environment.