

# Operation Instruction

## Olide-504W RFID Smart tag



### 1 Safety Instruction

**!** Thanks for your purchasing, please refer to the following carefully before using.

### 2 Product Over-view

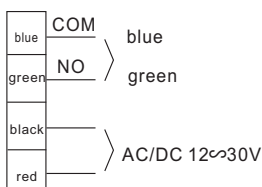
- The tag adopts waterproof design and has a compact appearance.
- Three-gear sensing distance adjustable, more flexible.
- Adopt dual frequency wireless signal control (125KHZ and 2.4GHZ )
- The tag is low-power consumption design, which makes battery life more durable.
- The identifier adopts a wide voltage AC and DC power supply design, which is flexible in power supply.

### 3 Overall Characteristic

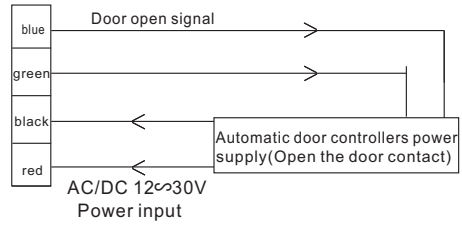


- ① Tag setting key
- ② Tag working indicator
- ③ controller indicator
- ④ controller function setting key
- ⑤ Mounting holes

### 4 Definition of Input and Output



### 5 Wiring Diagram



### 6 Matching Method

1. Matching method for controller and tag:

- (1). Once the controller is powered on, the red light is on. Press the controller function setting key for 1 second and then release, the blue indicator light flashes 3 times, matching successfully. Max 3 tags can be added.
- (2). Delete method: Press controller setting key, red light turn to blue, blue light shining slowly in 5 seconds, after 10seconds blue light shining quickly.

2. Setting tag sensing distance:

- (1). Press and hold the tag setting key, in three seconds it jumps to next gear, and three gears in a loop. When the indicator flashes once, release for setting a short distance (about 1 meter)
- (2). When the indicator light flashes twice, release for setting a medium distance (about 3 meters)
- (3). When the indicator light flash three times, release for setting a long distance (about 5 meters)

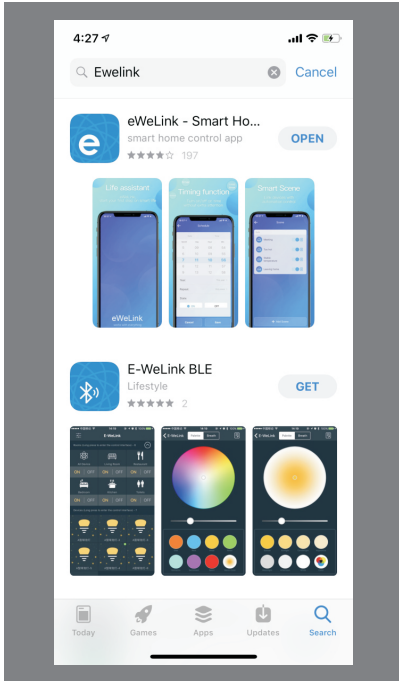
### 7 LED Indicator

- (1). Red lights on: standby mode
- (2). Red light flashing: no match tag signal is received.
- (3). Blue light on: received the matching tag signal, (open the door normally) and wait for the matching mode.
- (4). Blue light flashing: enter the delete all tag mode.

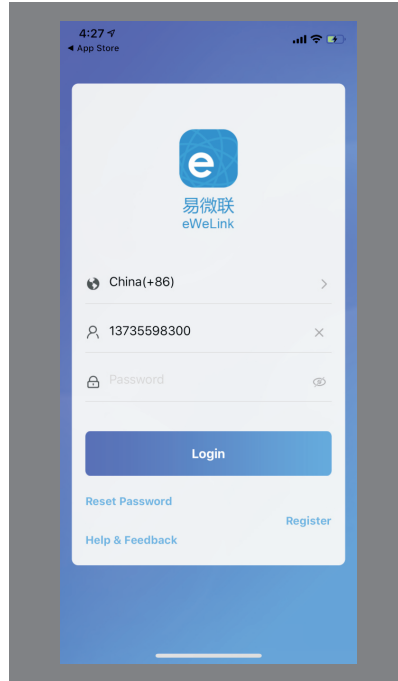
### 8 Technical Parameter

Power Supply (controller):	AC/DC12~30V
Standby Current(controller):	60mA
Action Current (controller):	90mA
Output Contact capacity:	1A 24VDC
Receiving Sensitivity :	-95dbm
Power Supply (Tag):	3V(CR2032battery)
Standby Current (Tag):	16uA
Transmission Current (Tag):	10.42mA
Transmission Distance:	3 gears adjustable(1m, 3m, 5m)
Size (Tag) :	46mm(L)X46mm(W)X11mm(H)
Size (controller):	108mm(L)X60mm(W)X17mm(H)

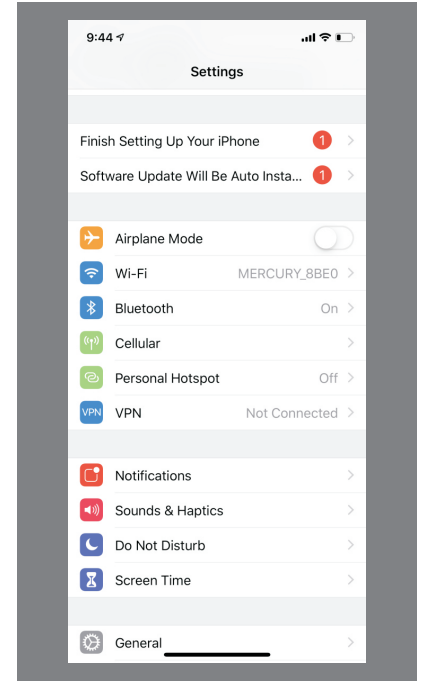
## 9 APPLE SETTING



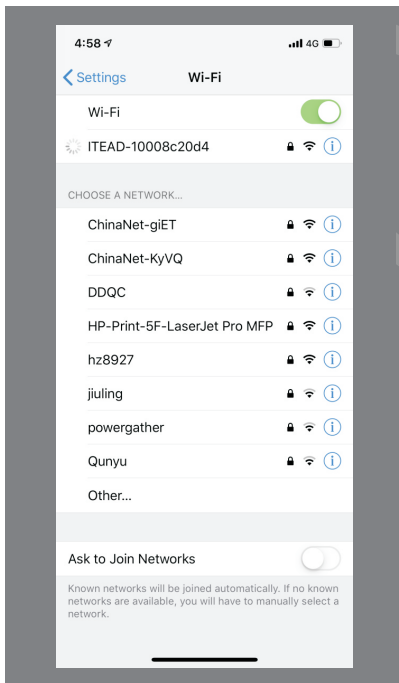
Step 1: Find out software "E-WeLink" and have it installed into APPLE mobile.



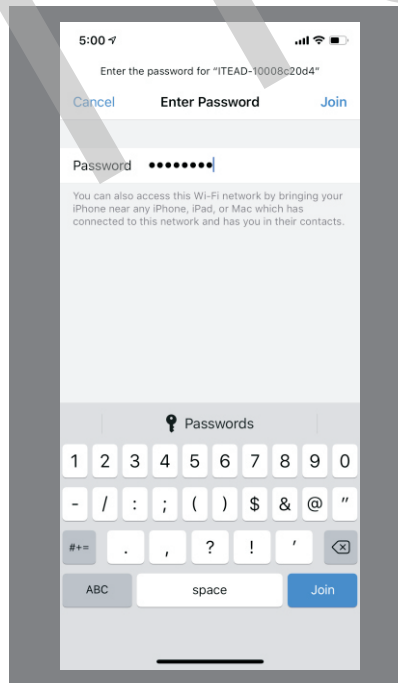
Step 2: OPEN E-WEBLINK APP, and register with a new account. Mobile number for Asia area registering and others with email address available.



Step 3: Open E-WEBLINK APP, enter with your account and press "+" to add equipment.



Step 4: press wifi access control 5S to enter matching status. And press "NEXT"

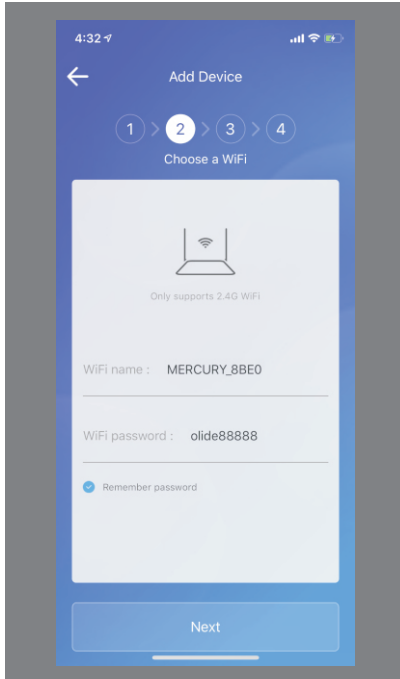


Step 5: Choose Compatible pairing mode (AP)

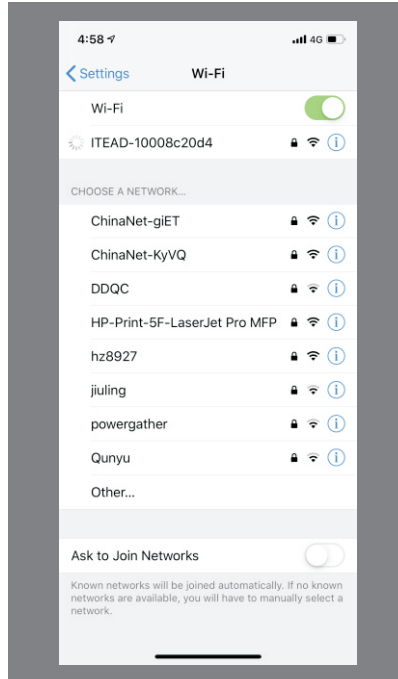


Step 6: Find out WIFI named "ITEAD" and link with it.

## 9 APPLE SETTING 2



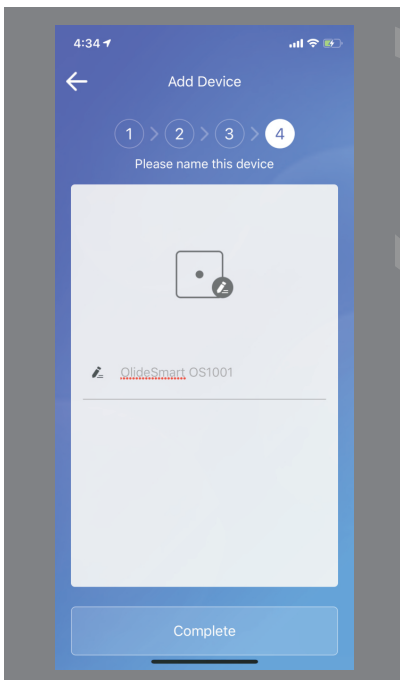
Step 7: Insert original password:12345678 to join in.



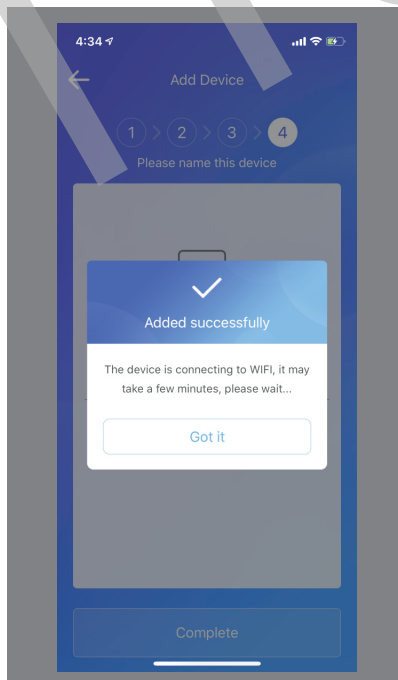
Step 8: and get back to E-WEBLINK APP.



Step 9: press "next"



Step 10: Insert your WIFI and password. If already connected, press "NEXT"



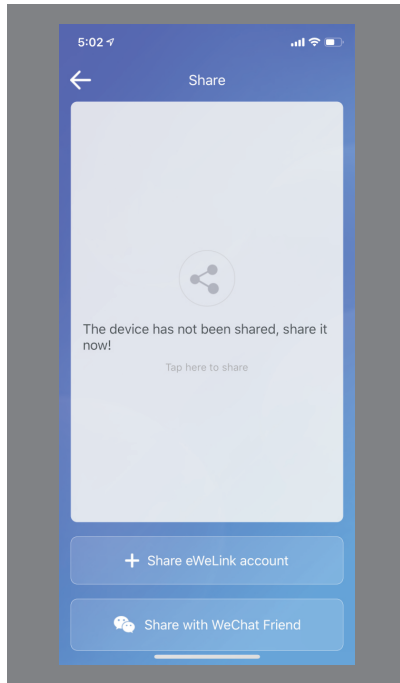
Step 11: System will search WIFI Access control and register automatically.



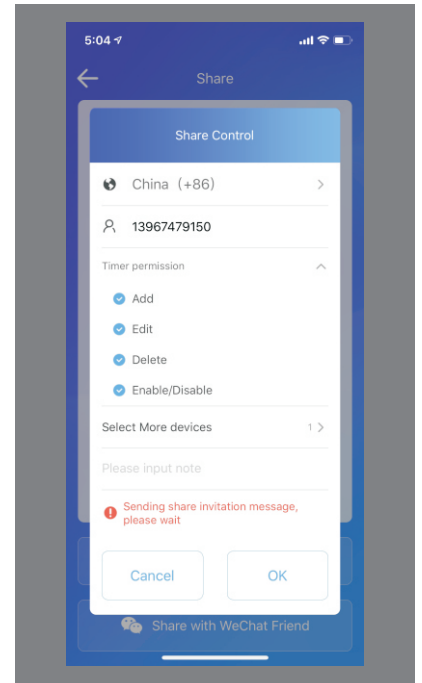
Step 12: User can revise equipment name. And Click "finished"



Step 13: Click "confirmed"



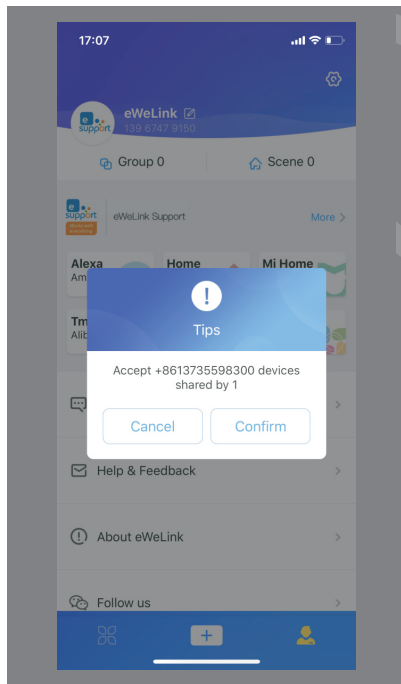
Step 14: You will see the equipment on this page. Press it to output DOOR OPEN signal.



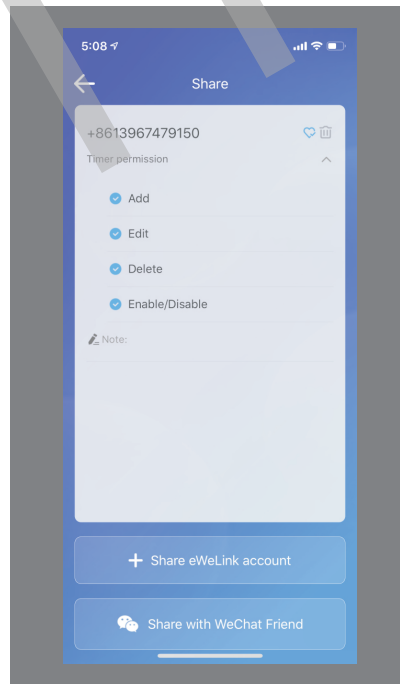
Step 15: on this page, you can press middle button to open door.

OFF: DOOR LOCK. ON: DOOR OPEN.

## 10 Android System 1



Step 1: Find out software "E-WeLink" and have it installed into APPLE mobile.



Step 2: OPEN E-WEBLINK APP, and register with a new account. Mobile number for Asia area registering and others with email address available.

**Note: Due to our privilege Settings, the first account to add and match this smart device is the primary account -- that is, the owner of the device. Before the primary account takes the initiative to delete the device itself, other users can operate the device through the sharing function, but cannot add the device by themselves through the "+" add button.**