

**Model# BNC-60/U162WT**  
**Instruction Manual**

**Specifications**

|                   |                           |
|-------------------|---------------------------|
| Input AC          | 125V/60HZ                 |
| Output Resistive  | 15A Max                   |
| Output Tungsten   | 8A Max                    |
| Wireless Standard | IEEE 802.11 b/g/n; 2.4GHz |
| App Support       | iOS/Android               |

**Safety Instructions**

- This device is recommended for use indoors and in a dry location only.
- This device should only be used within its' issued rating that stated in the Specifications.
- Please make sure to plug in the socket fully and correctly before using.
- Please do not disassemble the device. Otherwise, the device may get damaged or become a safety hazard.

**Get Started**

**Step 1:** Download APP

**Step 2:** Device Pair Mode

**Step 3:** Connect to Wi-Fi Network

**Step 4:** Enjoying

**Step 1: Download APP**

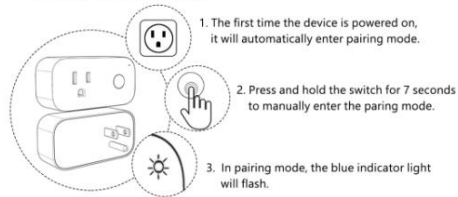
Download the BN-Link app from the App Store (iOS devices) or Google Play (Android devices).



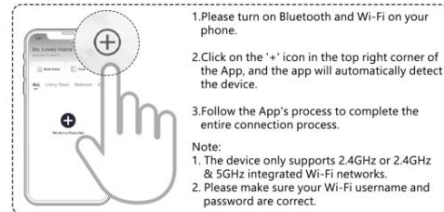
Notice:

1. Please do not mistakenly download the BN-LINK Smart App.
2. Do not sign in with BN-LINK Smart App credentials. If it's your first time using this APP, please register first.

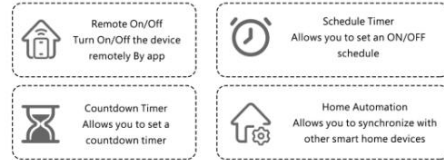
**Step 2: Device Pair Mode**



**Step 3: Connect to Wi-Fi Network**



**Step 4: Using Your Device**  
**4.1 App Control**



**4.2 Voice Control**

The Device supports voice control via Alexa or Google Assistant, Please follow the instruction on the app to complete the connection process.



**Troubleshooting**

- Issue 1 : Fail to connect to Wi-Fi.
  - a. Ensure that the downloaded app is "BN-link", not "BN-Link Smart".
  - b. Ensure the device is within 100FT of the router.
  - c. Make sure your router is a 2.4GHz Wi-Fi, or it is an integrated router with both 2.4GHz and 5GHz; exclusively 5GHz networks are not supported. If you are uncertain about the frequency of your network, please contact your service provider.
  - d. Ensure the SSID and password of the Wi-Fi network are correct, and you did not copy and paste the Wi-Fi password.
- Issue 2: How to enter/exit the Pair mode:
  - a. To enter Pairing Mode, press and hold the on/off button for 5 seconds and count slowly; the indicator light will then start to flash.
  - b. To exit pairing mode, wait for 3 minutes and it will automatically exit, or unplug and plug it back in.
- Issue 3: Lost connection./Cannot use the device with the app:
  - a. Ensure the home Wi-Fi network is working properly.
  - b. Check if the Wi-Fi password has been changed.
  - c. Ensure there are no obstacles between the device and the router.
  - d. Try re-pairing the device with the network by removing the device from the app and reconnecting it.

**Customer Service**

- Warranty time: One year
- Email : support@bn-link.com
- Website: https://www.bn-link.com
- Phone: 1-909-592-1881

**FCC statement**

This device complies with Part 15 of the FCC Rules. Operation is subject to the following two conditions:

- (1) This device may not cause harmful interference, and
- (2) This device must accept any interference received, including interference that may cause undesired operation.

Warning: Changes or modifications not expressly approved by the party responsible for compliance could void the user's authority to operate the equipment.

NOTE: This equipment has been tested and found to comply with the limits for a Class B digital device, pursuant to Part 15 of the FCC Rules.

These limits are designed to provide reasonable protection against harmful interference in a residential installation. This equipment generates uses and can radiate radio frequency energy and, if not installed and used in accordance with the instructions, may cause harmful interference to radio communications. However, there is no guarantee that interference will not occur in a particular installation. If this equipment does cause harmful interference to radio or television reception, which can be determined by turning the equipment off and on, the user is encouraged to try to correct the interference by one or more of the following measures:

1. Reorient or relocate the receiving antenna.
2. Increase the separation between the equipment and receiver.
3. Connect the equipment into an outlet on a circuit different from that to which the receiver is connected.
4. Consult the dealer or an experienced radio/TV technician for help.

**BN-LINK INC.**  
 11701 6th Street, Rancho Cucamonga, CA 91730  
 Customer Service Assistance: 1.909.592.1881  
 E-mail: support@bn-link.com  
 Http://www.bn-link.com  
 Hours: 9AM - 5PM PST, Mon - Fri  
 Designed in California Made in China