

PTAHDUS

Ptahdus Heated Gear

— Instruction —

Catalog

Brand Story	1.
Battery Instruction	2.
How to Charge The Battery?	3.
How Long Will The Battery Fully Charge?	4.
How to Turn On and Turn Off The Battery?	5.
Difference On Heating Areas	6.
Clothing Operation Guide	7.
Caution	10.
How to Adjust Heating Levels?	11.
Washing Instruction	11.
Safety Instruction	12.
Package Includes	13.

OUR MISSION

To give people who live in extremely cold area a tough gear against chilly winter.

WHY PTAHDUS HEATED GEAR?

Ptahdus was born in 2016. Our team found people who live in extremely cold area were always suffering from virus, muscles ache, joints, even blood slow blood circulation. When winter is coming, your weight will instantly increase '40 lbs' because you can not get rid of big heavy jacket, sweater, layer, scarf, insulate gloves and super heavy boots to against chilly winter morning.

We focus to create a jacket which is lightweight and warm. After then, 'Heated Plus' concept was firstly mentioned by Ptahdus in 2017. As a result, Ptahdus insists to achieve this concept and we redefine heated jacket through hand pocket warmer design and added heat preservation layer inside.

The goal of Ptahdus is to provide all-around heated feeling to you when you are wearing our heated jacket. We hope we can deliver 24 hours warmth and comfort to people to against winter. We hope our heated jacket can help you to get rid of heavy equipment in winter.

Just say goodbye to coldness.

Ptahdus, you should have one.

Battery Instruction

Capacity	5000mAh/37.0Wh
Input	5V/2.0A
Output	DC 7.4V/2.0A; USB 5V/2.1A
Weight	7.76 oz(220g)



Fully charge before first use.



DO NOT expose to liquids.



Fully charge every 6 months.



DO NOT disassemble.

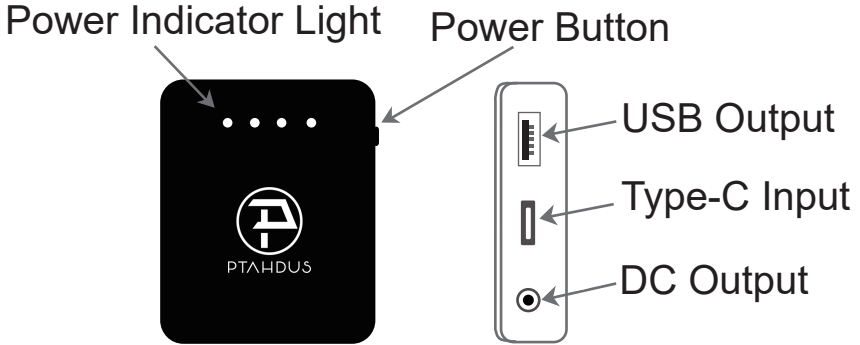


Store the battery pack where the relative humidity is $60 \pm 15\%$ RH.

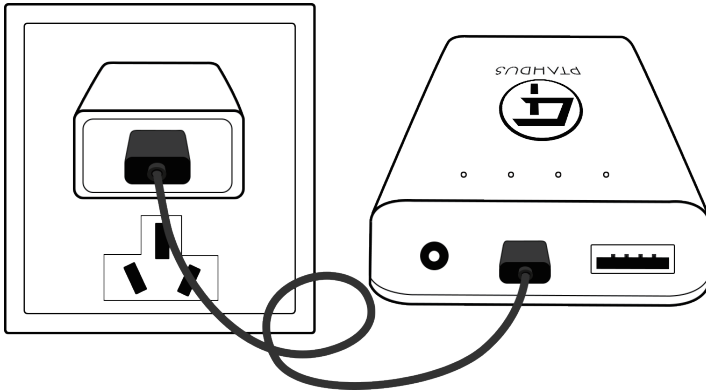


Avoid fire

Battery Details



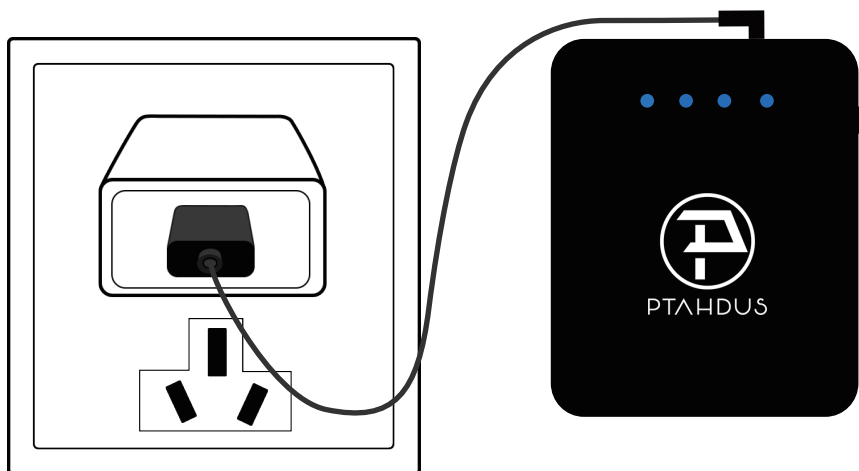
How to Charge The Battery?



- ① Connect the adapter with socket
- ② Put the cable inside type-c input
- ③ When battery is charging, the LED power indicator light will keep blinking.

How Long Will The Battery Fully Charge?

It basically takes 6 hours to fully charge the battery.

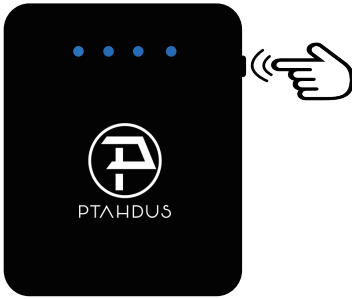


How Can I Know The Battery Is Fully Charged?

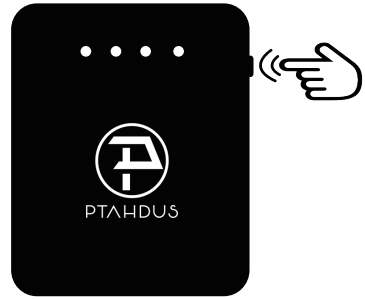
When battery is fully charged, the battery will shut off in 20s automatically, because the over-charging protection is triggered.

How to Turn On and Turn Off The Battery?

When user click once the side right power button, the battery will be activated. If user want to turn the battery off, user needs to press and hold for 3s to turn it off.



One-click to turn on

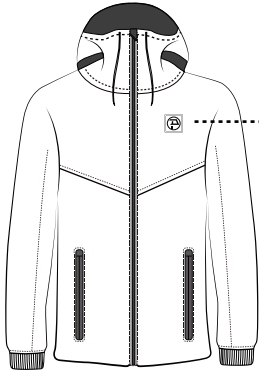


Press and Hold for 3s to turn off

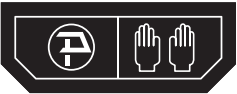
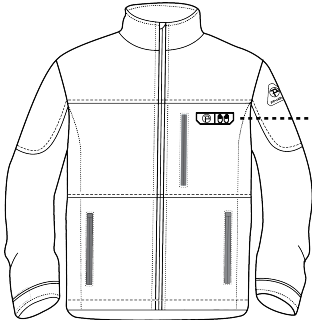
What Does The LED Power Indicator Light Mean?

•→	0-25% Power
• •→	26-50% Power
• • •→	51-75% Power
• • • •→	76-100% Power

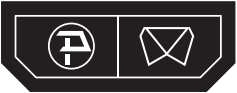
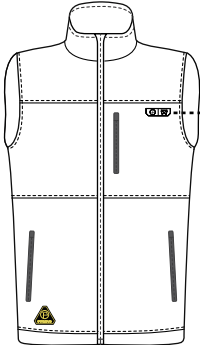
Difference On Heating Areas



Body Warmer



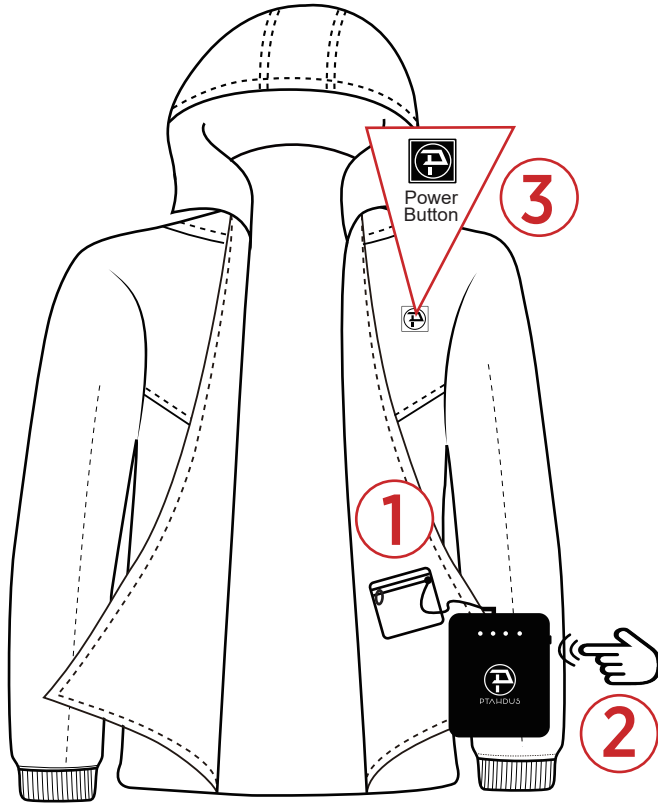
Body Warmer & Hand Warmer




Body Warmer & Neck Warmer

Clothing Operation Guide

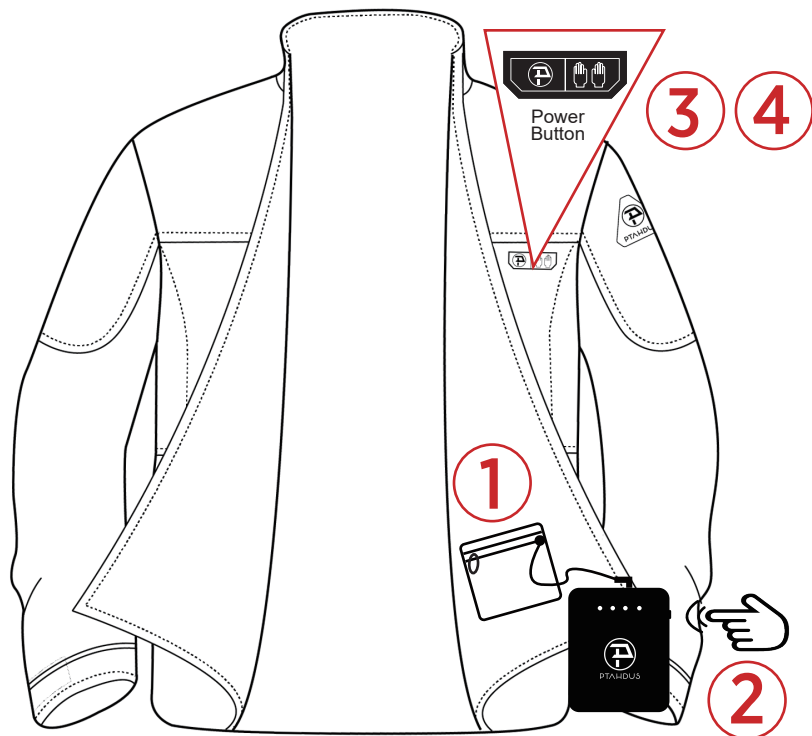
Body Warmer





- ① Insert power cable with battery DC output
- ② One Press battery power button to activate
- ③ To turn on / off Body warmer, Long press  for 3s until LED turn on / off

Clothing Operation Guide

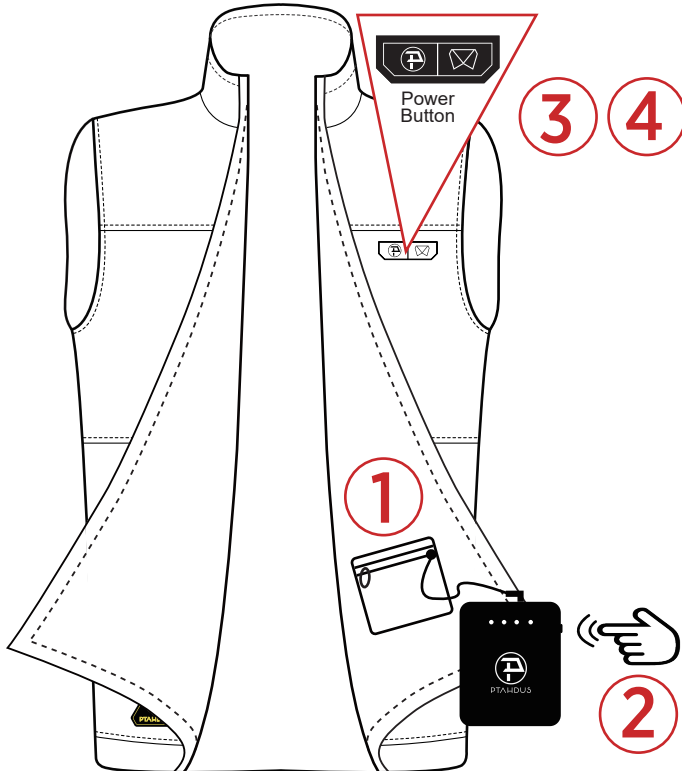
Body Warmer & Hand Warmer





- ① Insert power button with battery DC output
- ② One Press battery power button to activate
- ③ To turn on / off Body warmer, Long press  for 3s until LED turn on / off
- ④ To turn on / off Hand warmer, Long press  for 3s until LED turn on / off

Clothing Operation Guide

Body Warmer & Neck Warmer



- ① Insert power button with battery DC output
- ② One Press battery power button to activate
- ③ To turn on / off Body warmer, Long press  for 3s until LED turn on / off
- ④ To turn on / off Neck warmer, Long press  for 3s until LED turn on / off

Caution

- 1.** When heated jacket is off and power cable keeps connecting with battery, it stays on ready mode. If user want to activate heated function again, you only need to long press power button on front chest for 3s until LED turn on.
- 2.** When heated jacket is off and power cable disconnect with battery. To your safety concern, battery will automatically turn off after 10s. If user want to activate heated function again, you need to one press battery power button to activate and long press power button on front chest for 3s until LED turn on.
- 3.** If user need to turn off battery, you only need to long press battery power button for 3s until LED turn off.

How to Adjust Heating Levels?

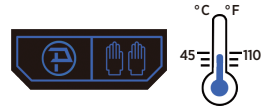
The heating level can be adjusted by pressing the power button. Each press will cycle through 3 heating levels, high, medium and low, that mean different temperature settings.



HIGH
RED LED



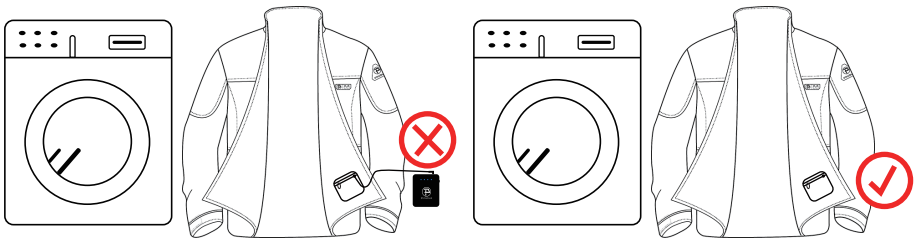
MEDIUM
WHITE LED



LOW
BLUE LED

Washing Instruction

Before washing the clothing, REMEMBER disconnecting and removing the battery pack from the battery pocket, put the connect cable back, zip it up and finally put it in laundry bag.



How to clean the clothing?

Machine wash or Gentle cycle in cold water .

But,

Do not Iron

Do not Bleach

Do not Dry Clean

Do not Wring or Twist Dry.

Safety Instruction



Apparel used for keeping a person warm in cold environments.
DO NOT use this product in any ways as stated below.

For battery:

1. Battery appears deformation.
2. NEVER break open battery packs and chargers.
3. The temperature of battery keeps increasing when using.
4. Battery connect cable appears deformation or do not abuse the power cable.
5. DO NOT dispose of used battery packs in household trash or by burning it.
6. DO NOT store the battery pack together with metal objects (short circuit risk).
7. Use only Ptahdus Charger to charge Ptahdus Battery packs to ensure the safety and charging efficiency.
9. Battery acid may leak from damaged batteries under extreme load or extreme temperatures. In case of contacting with battery acid, wash it off immediately with soap, and water. In case of eye contact, rinse thoroughly for at least 10 mins and immediately seek medical attention.

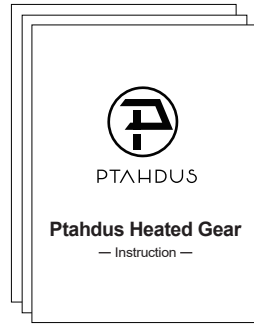
For clothing:

1. NEVER wear if inner liner is wet.
2. Shut off power immediately if discomfort occurs.
3. Heating elements are not recommended to touch bare skin.
4. Keep cord away from heated oil, sharp edges or moving parts.
5. DO NOT use pins on apparel. This may damage the electric wiring.
6. Do not abuse the power cable. Never use cord for carrying, pulling or un-plugging the heated jacket.
7. If you have a medical condition making you sensitive to overheating, or you use any personal medical devices.

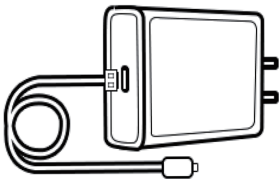
Package Includes



Heated Gear X 1



Instruction X 1



Ptahdus Charger X 1



Battery X 1