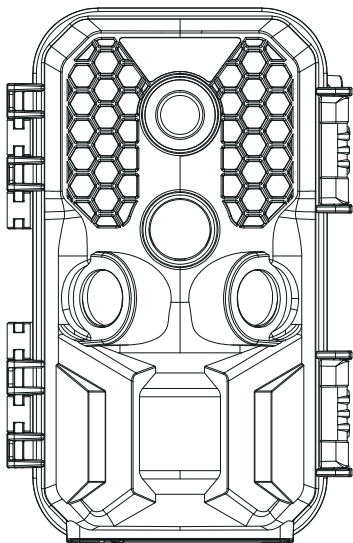


DL503 Trail Camera

User's Manual



4K Hunting Camera

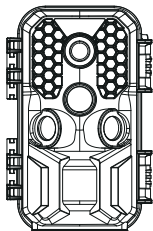
CONTENTS

English 01-28

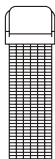
Packing List	01
Introduction	01
Appearance.....	03
Preparing The Camera.....	05
Using The Camera And Setup Menu	07
WIFI and APP.....	14
The Precautions of Camera Installation	23
Mounting.....	24
Enter ON Mode	26
Technical Specification.....	27
Simple Trouble Shooting	28

Packing List

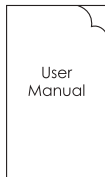
Please carefully unpack camera and check that below accessories are contained in the box.



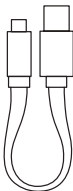
①



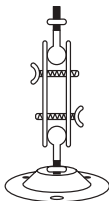
②



③



④



⑤



⑥

- ① Wildlife Camera x 1
- ② Mounting Belt x 1
- ③ Instruction Manual x 1

- ④ USB cable x 1
- ⑤ Wall Mount x 1
- ⑥ Screws x 3

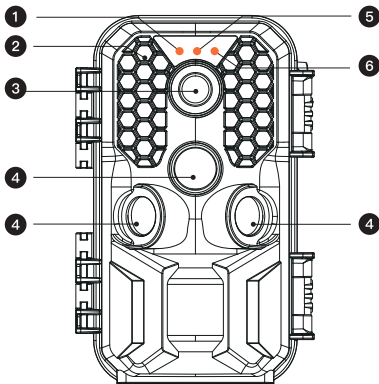
Introduction

The trail camera can be used in many places. For example, using it for hunting, wildlife monitor, farm monitor and home security. The infrared sensor of the camera can detect the temperature change within the detection range to trigger the camera to take pictures or videos.

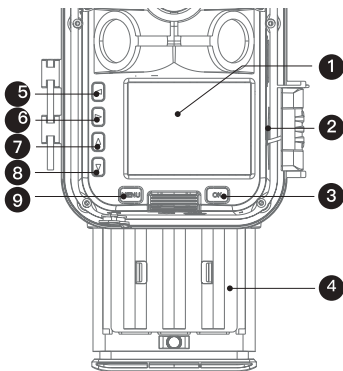
Features of 4K Hunting Camera

1. Built-in wifi
2. 30MP photo and 4K HD video resolution
3. 0.2s trigger speed
4. 38 pcs IR LEDs
5. 6.1cm(2.4") color TFT LCD (320x240 pixels)
6. 3 Sensors with 120° detection angle
7. IP66 Waterproof
8. Fully automatic IR filter
9. Mini USB 2.0 interface
10. Power indication
11. Built-in microphone and speaker
12. Setup Serial No. to record the position
13. Time, date, temperature, phase and Serial No.
14. SD card (CLASS 10, up to 128GB)

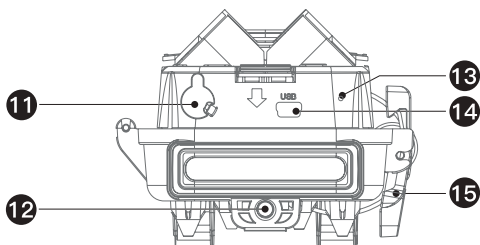
Appearance



1. Side Indicator
2. IR LEDs
3. Lens
4. PIR Sensors
5. Light Sensor
6. Main Indicator

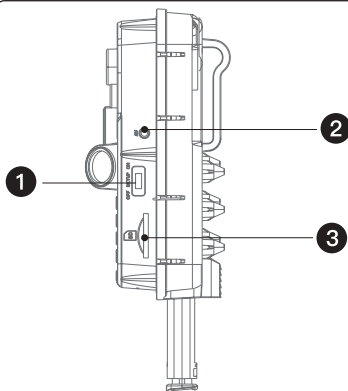


1. Screen
2. Memory card slot
3. OK
4. Battery Case
5. LEFT
6. RIGHT
7. UP
8. DOWN
9. MENU



11. DC Power input
12. Mount Screw
13. Micphone

14. Mini USB
15. Locking hole for lock



1. Power Switch
2. AV Output
3. Memory card slot

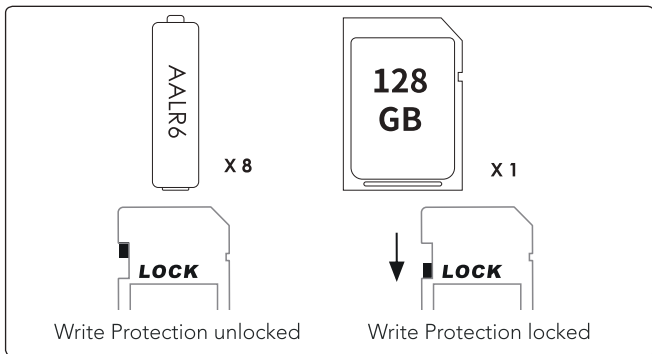


1. The monitor is only switched on in the SETUP mode for changing menu settings or viewing existing photos and videos.
2. A SD memory card must have been inserted into the memory card slot to save photos and videos.

3. Using the mini USB connection (USB 2.0), the camera can be connected to a computer to download photos and videos.
4. Using the mode switch, the three operating modes: OFF, SETUP and ON can be selected.

Preparing The Camera

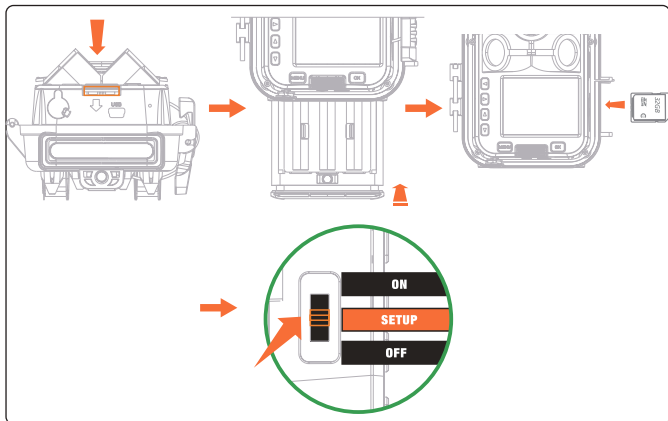
Note:



1. SD memory card up to 128 GB are supported.
2. For best using experience, we recommend using 8 alkaline batteries to power the camera, lithium-ion rechargeable batteries are not recommended because rechargeable batteries have lower voltage output and poor performance under low temperature.
3. 8x AA batteries are recommended. Do not use new and old batteries together. DC interface recommend 6V/1.5A adaptor with plug 3.5mm(outer diameter)*1.35mm (inner diameter).
4. Insert CLASS 10 or higher class SD card (U3 recommend). Make sure that the write protection of the SD card is unlocked.
5. Switch on the camera. Three switches: power off (OFF), setup menu (SETUP) and live mode (ON).
6. New memory card is recommended to be formatted when using (as below described).
7. Please note that the camera will power off in low battery.

How to start:

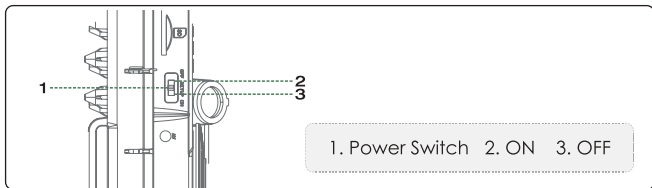
1. Push the release button to release the battery case
2. Insert 8x brand new alkaline batteries
3. Install the battery case
4. Insert the SD card
5. Switch to 'SETUP' mode, setting the camera
6. Switch to 'ON' mode, camera start to work



Using The Camera And Setup Menu

Using the Camera

Main Keys	Functions
Power	<p>Pull Switch:</p> <ol style="list-style-type: none">1. OFF: Power off2. SETUP: Setting and testing mode3. ON: Working mode
MEUN	<ol style="list-style-type: none">1. Press the button shortly in the preview interface, working modes will be switched between Video/ Photo/Playback/ Setup.2. In setup menu, press the button shortly to exit current menu.
UP Key	<ol style="list-style-type: none">1. In Playback mode, scroll through the recorded files.2. In Setup menu, scroll through the setup menu and adjust values.3. Press the button for 3s to turn on WIFI.
OK/SHOT	<ol style="list-style-type: none">1. In the video or photo taking interface, press the button shortly to shot.2. Under the menu settings, press the OK button for 3s to confirm as OK3. In Playback mode, play video.4. In Playback mode, press the OK button for 3s to delete file
Down Key	<ol style="list-style-type: none">1. In Playback mode, scroll through the recorded files.2. In Setup menu, scroll through the setup menu and adjust values
Left Key	Press the button shortly to adjust value when setting multiple digits in the menu.
Right Key	<ol style="list-style-type: none">1. Press the button shortly to adjust value when setting multiple digits in the menu.2. In video or photo mode, press the button shortly to enter playback mode.
Battery Case Release	Press to release the battery case.



Power Switch

Shift the switches to choose work mode:



ON SETUP OFF

Power off (OFF)



ON SETUP OFF

Setup system (SETUP)



ON SETUP OFF

Live mode (ON)

OFF

The camera is completely off, only in this mode, you can unplug the memory card, replace the batteries.

SETUP

Under this mode, the camera screen is on, you can manually record video or take photos, you can also review the recorded files or change the setup options according to your own reference.

When the camera is in SETUP mode, the PIR sensors are on, when they are triggered, the PIR indicators LED will flash. But in this mode, the camera will not take photos or record video when the PIR sensors are triggered.

ON

When the camera is switched from SETUP mode to ON mode, it will enter standby with low power consumption, screen display will turn off and button operation will be disabled. The camera will respond to the PIR sensors only. It will turn on and take photo or record videos when the PIR sensor is triggered, then return to standby afterwards.

Mode

'Photo', 'video', 'photo+video' mode are available. Under the 'Photo+Video' mode, the camera first takes a set number of photos before recording a video.

Image Size

30MP / 24MP / 20MP / 16MP / 12MP / 8MP / 5MP / 3MP / 1MP are available. The higher the resolution, the larger the space occupied on SD card.

Picture NO

1P/2P/3P/4P/5P/6P/7P/8P/9P/10P available

Choose the photo count to be taken when the camera get triggered.

Shutter speed

Choose different shutter speeds (1/15, 1/20, 1/30), the brightness of photos or videos taken by night vision is different.

Resolution

4K/30fps, 2K/30fps, 1296P/30fps, 1080P/30fps, 720P/30fps, 480P/30fps, 360P/30fps available. The higher the resolution, the larger the space occupied on SD card.

The format of video is MP4 which can be played back on most video devices.

Video Length

5s~180s available, default 5 seconds.

Select the duration of the video as needed. Please pay attention to that when recording manually in the Setup mode, the camera will stop recording after 29 minutes / the video size reaches 4GB / the memory card is full / the battery is in low power.



The power consumption of 10s video recording is the same as 150 photos. Therefore please record the video according to the actual situation to extend battery life.

PIR Interval

When different modes are selected, the time period is different.

Photo: 5" ~59'59"

Video: 10" ~59'59"

Photo+Video: 10" ~59'59"

The camera doesn't take any photos or videos during the PIR interval, which avoids unnecessary shootings.

The shorter the interval, the more frequently the camera shoots, and the faster the battery is consumed.

PIR Sensitivity

High / Medium / Low available

Select the sensitivity according to the actual situation. For example, if the subject is a small animal, you need to choose high or medium sensitivity. The PIR sensor determines if there are animals by detecting the difference in temperature. The smaller the animal, the smaller the temperature difference.

IR LED

Auto /Economy/OFF available

Select 'Auto', the camera will adjust the IR LED brightness automatically depending on the ambient light conditions.

Select 'Economy', the camera will maintain the weakest infrared light.

Select 'OFF', the IR LED will be turned off.

Time Lapse

On / Off available

Select 'On' and then set the time interval. After the time interval, the camera will take photos or videos automatically whether or not an animal is in the detection range.

For example, if the process of flowers blooming has to be recorded, time lapse can be used. The camera automatically takes pictures after every set time intervals.

Monitoring Period

Timer 1 Start / Timer 1 Stop, Timer 2 Start / Timer 2 Stop available

Select 'On' and click 'OK' to confirm, then set the starting working and ending working time.

After completing the settings, the camera will only take pictures or videos during the selected working hours every day. Beyond the period, the camera will be on standby.

For example, if the start time is set to 18:35 and the end time to 8:25, the camera will be operational from 6:35 pm of the current day until 8:25 am of the following day. During the period, the camera will be triggered once animals enter the detection range. Beyond the period, the camera will not take any photos or videos.

Record Audio

On / Off available

Select 'On' or 'Off' as needed.

After choosing 'On', the camera will only record audio during the video recording. Beyond the period, the camera will not record any voice.

Side PIR Setup

ON / OFF available

You can choose to turn on or off the sensors on both sides. Select 'OFF' to turn off side PIR sensors. If you want to narrow the detection range, please turn off the side PIR sensors.

Date/Time

DD / MM / YY, MM / DD / YY, YY / MM / DD are available, please press 'OK' to set the date/time, press UP and DOWN keys to change digit, press LEFT and RIGHT keys to select year/month/day.

Time Format

12H/24H

Choose 12 hours system or 24 hours system.

Date Stamp

On / Off available

Select 'On' and then the date watermark will be displayed on photo or video.

Camera Name

Setup the camera name and it will be displayed in the photo watermark.

Beep Sound

On / Off available

Select 'On' and then you will hear the beep sound when press buttons.

Language

Select the menu language.

English / French / Spanish / Portuguese / German / Italian / Chinese available. Please enter '1111' to unlock the camera if you forgot your password.

Password Setting

Setup a startup password to protect the camera.

Auto WIFI Off

1 Minute/2 Minutes/3 Minutes available

Setup the period so the camera will automatically turn off WIFI when it is not connected to a smartphone within the preset time.

Format

Format the memory card.

Default Setting

Cancel /OK available

Select 'OK' to return menu setting to defaults.

Version

Check firmware version.

Mcu FW Update

Firmware Update.

Playback

When playing back the video, press 'OK' to play and stop it. press

'UP' key to quickly play by 2x / 4x/ 8x. Press 'DOWN' key to back play -2x /- 4x/ -8x. Press 'MENU' key to exit the current playback. Press 'OK' button for 3s in the playback interface to enter the settings menu (Delete/Protect)

a. Delete

Delete current or all file: press 'OK' key to enter the delete menu. You could select 'delete current' or 'delete all ', press "OK" key to confirm, and press 'MENU' key to return to the superior menu.

b. Protect

Select 'Lock Current' to prevent the current file from being deleted accidentally.

Select 'Unlock Current' to release current document protection.

Select 'Lock All' to prevent all files on the memory card from being deleted accidentally.

Select 'Unlock All' to release all file protection.

WIFI and APP

WIFI APP connection

For IOS users, please scan the QR code below or search 'Hunting 4K' on Apple Store to download the APP first.

For Android users, please scan the QR code below or search 'Hunting 4K' on Google Play Store to download the APP first.

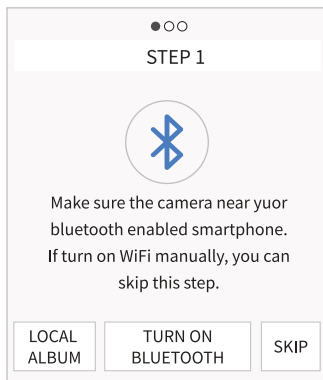


IOS/Android

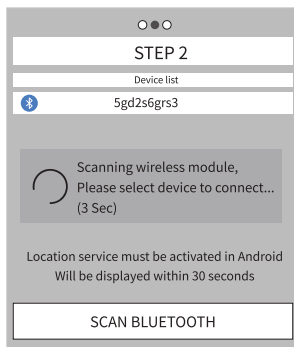
1. Connect the WiFi via Bluetooth

Click the menu on your camera and turn on the camera's bluetooth first.

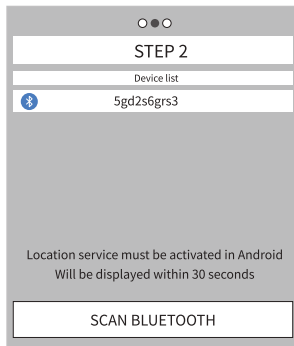
In ON or SETUP mode, click to enter APP, the display of your phone shown as below:



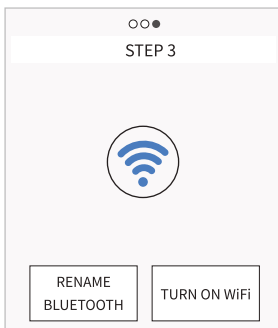
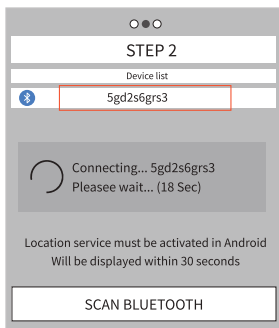
1.1 Click 'TURN ON BLUETOOTH'. The APP will show 'STEP2', automatically search bluetooth device by itself. shown as below:



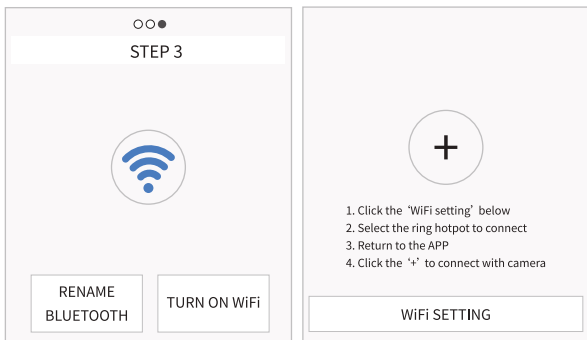
1.2 The searched bluetooth devices will be displayed under 'Device List', shown as below:



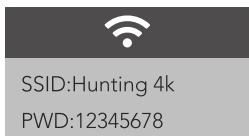
- 1.3 Click the appropriate bluetooth device (different devices have different names, you can name them by yourself), APP would connect with the camera bluetooth. The mobile phone will pop up the Window 'Connecting... Please wait...'. After successful connection the APP would enter into 'STEP3'.



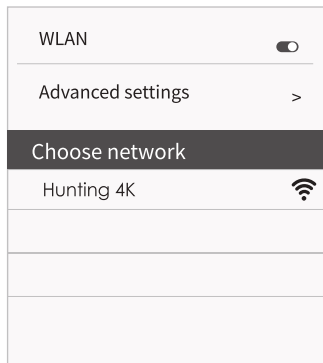
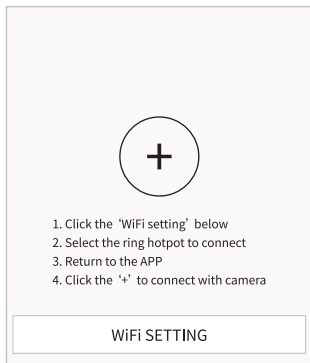
1.4 Click 'TURN ON WiFi', after 5s countdown, it would jump to the interface of 'WiFi SETTING', shown as below:



When the camera receives the command to turn on WiFi, the hotspot would be turned on as below shown.



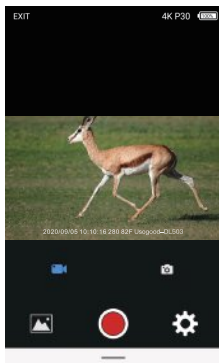
1.5 Click the 'WiFi SETTING' button, connect the wifi 'Hunting 4K' on your phone. The initial password is '12345678'.




After successful connection, the interface display in the camera shown as below:

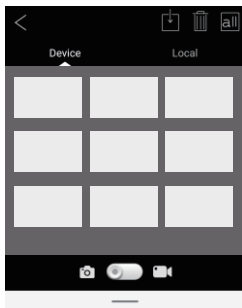
WiFi Connected
Mac: d8c7714fffc9
Press UP to Disconnect





- 1.6 Return back to APP after the WiFi successful connection. And then the APP would automatically connect with camera, or click '+' to manually connect.




	The connection between camera and mobile phone
EXIT	Turn off the APP, the Bluetooth and WiFi functions between mobile phone and camera would be turned off at the same time.
4K P30	Display the resolution of the photo or video
	Camera battery level display
	Switch to video mode Switch to photo mode
	Review pictures or videos in the camera
	Control the mobile phone to take photos or videos through the camera
	Camera System Setting Notice: This setting function is synchronized with the camera system setting function. It realizes through the way of wireless.

1.7 Click the icon  to enter the pictures review as shown below diagram.



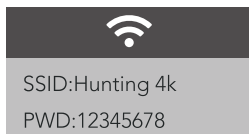
	Select the picture or video to download, and press the button to save files to mobile phone.
	Press this icon to delete the selected the pictures or videos. After the picture or video is deleted, the file could not be recovered.
	Select all the files. It can be selected up to 18 photos once time.
	Toggle the switch, the switch between picture review and video

1.8 Click the icon  to enter the menu setting, as shown below diagram.

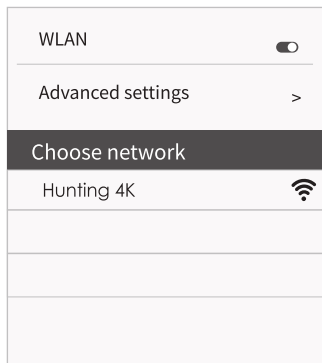
Setting	
Mode	Photo>
Image Size	5M>
Sampling(valid in'ON'mode)	1 Photo>
Resolution	4K P30>
Record Time(valid in 'ON' mode)	00:10>
PIR Interval	00:30>
PIR Sensitivity	Med>
IR LED	Auto>
Time Lapse	Off>
Timing Interval	

2. Connect the WiFi Manually

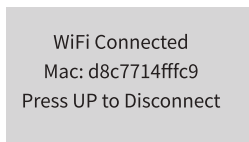
2.1 In SETUP mode, press the UP button for 3s to turn on the WiFi of the camera. The screen of the camera shown as below.



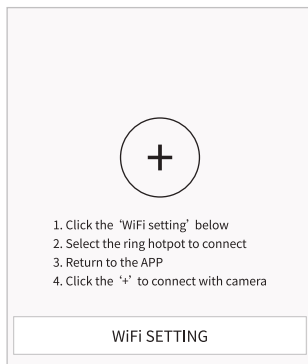
2.2 Connect to the wifi named 'Hunting 4k' on your phone. The initial password is '12345678'.



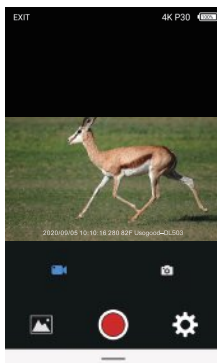
2.3 After successful connection, the interface display in the camera shown as below.



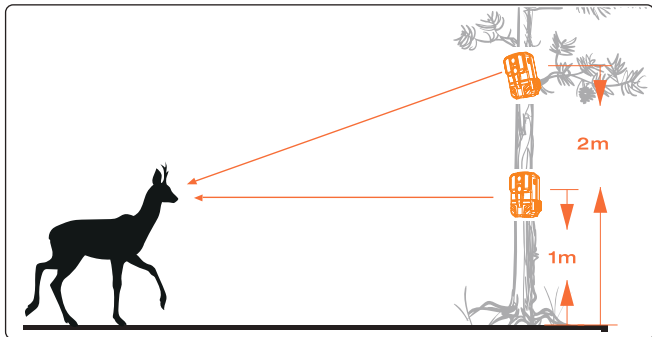
2.4 Open the APP 'Hunting 4K', the interface shown as below.



2.5 Click the '+' to connect the APP and your camera.



The Precautions of Camera Installation

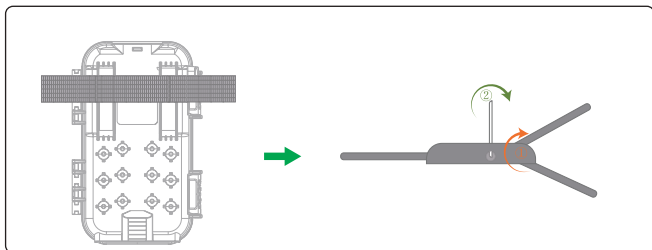


1. During alignment consider whether the use of the side motion sensors may be useful for attaining the desired observation results.
2. Place and test the camera as following:
Fasten the camera to a tree or similar object at a height of 1-2 meters and align the camera in the desired direction. Then move slowly from one side of the target area to the other side under the ON mode. A few moments later, check if the camera is triggered.
3. To ensure that the camera doesn't make unnecessary recordings, it should not be placed in a sunny location or close to branches.

Mounting

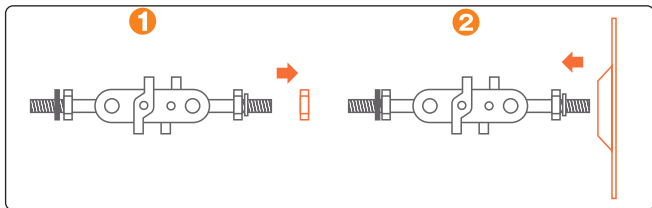
1. Using the Adjustable Mounting Belt

Push one end of belt through the brackets on the back of the camera. Thread the end of the strap through the buckle. Fasten on the belt securely around the tree trunk by pulling the end of the strap firmly so there is no slack left.



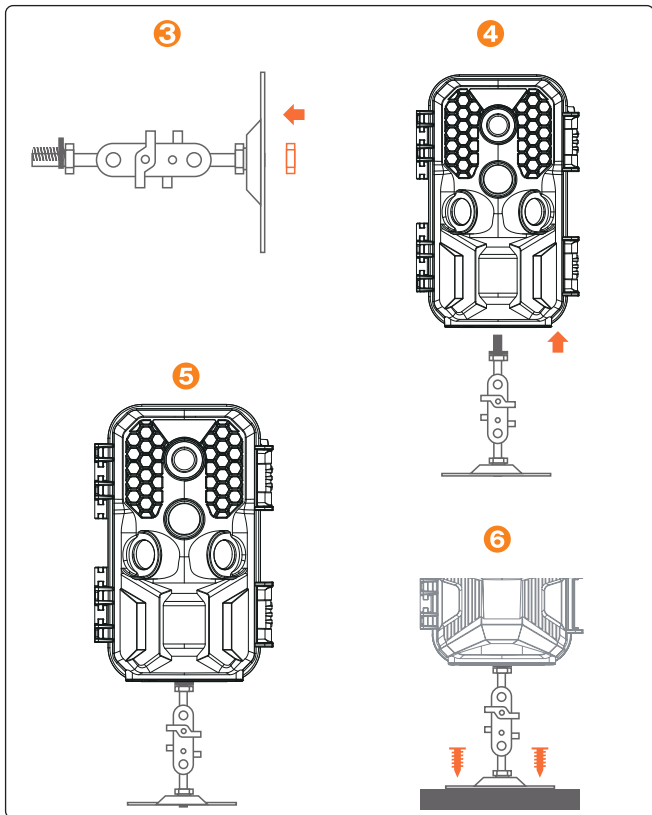
2. Using the Tripod Socket

There is a chassis in the package, and the bracket we provide can be mounted on it.



2.1 Remove a nut from the fixed bracket (Be careful not to drop the iron ring from the bracket).

2.2 Insert the bracket into the chassis.



2.3 Fix the bracket to the chassis with the removed nut.

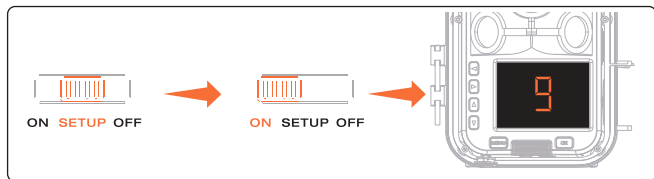
2.4 Fix the camera to the bracket.

2.5 Assembly is complete. They can be made stronger by turning the swivel screws on the bracket.

2.6 Use wall anchors and screws to fix the camera on the wall (plank, etc.).

Enter ON Mode

The standard application of the DL503 Camera is the ON mode. Please switch to the 'SETUP' mode, adjust the settings as you want, then switch to the 'ON' position. The blue LED will flash and the screen will count down 9 seconds, after then the camera will work automatically and the LED will turn off. As soon as wild animals or other objects enter the detection area of the sensor zone, the camera starts to record photos and videos.



- In the daytime, IR LEDs will not work (the photos and videos in color). At night, the IR LEDs will start working automatically (photos and videos in black and white).
- The PIR Interval is 1 minute defaulted. 59' 59" optional.
- Please set up recording mode and related parameters before entering the 'ON' mode.
- If the battery is in low power, the camera is not enough to turn on the IR LEDs and can't take any photos or videos at night. Therefore, we recommend using 8x 1.5V AA batteries (external power supply is at least 6V) for good night vision. Please don't use 4x batteries or 1.2V external power supply.

Technical Specification

Model	DL503
Image Sensor	30 Megapixel CMOS sensor
LCD	2.4 inch LCD
Photo Resolution	30MP/24MP/20MP/16MP/12MP/8MP/5MP/3MP/1 MP
Trigger Time	Up to 0.2 seconds
Video Resolution	4K/30fps、2K/30fps、1296P/30fps、1080P/30fps、720P/30fps、480P/30fps、360P/30fps
Memory Type	SD Card up to 128GB (Not include)
File Format	JPEG, MP4
USB Connection	USB 2.0
Power	6V
Support System	Windows XP/ Vista/7/8, Mac 10.2
Detection Angle	120°
Power supply	8x LR6 1.5V Alkaline batteries
External DC 6V/2A	3.5*1.35mm
Night Vision Range	Up to 20m (65ft)
Detection Range	Up to 20m (65ft)

Simple Trouble Shooting

<p>The camera can't be turned on</p>	<ol style="list-style-type: none"> 1. Please check whether the batteries are installed in proper way. 2. Check if the battery capacity is low or exhausted. If it is, please replace by 8x 1.5V brand new AA batteries. 3. Check if the switch has been adjusted to the 'ON' mode. Switch to the 'SETUP' mode for parameter setting. After setting, switch to the 'ON' mode and the screen will turn off when the 5s countdown ends and enter the working mode. 4. If SD Card or SD Card hoder has something wrong, the camera will also not work normally.
<p>The camera turns off automatically</p>	<ol style="list-style-type: none"> 1. Please check whether the battery capacity is low or exhausted. If it is, try to change new batteries for outdoor using or connect 6V DC adapter (the power interface is 3.5*1.35mm) for indoor using. 2. If SD Card and SD Card hoder has something wrong, the camera will also turn off.
<p>It shows 'SD card Error'</p>	<ol style="list-style-type: none"> 1. Please ensure that SD card is with class 10 standard or higher level. 2. Please format the SD card on the computer first and format it again when it inserted into the camera. 3. Please replace another SD card.

Videos are choppy or jumpy when played on a computer	<ol style="list-style-type: none"> 1. Try to use different media players such as VLC player. 2. Ensure MP4 format Video clip can be played on your computer.
The image is not clear	<ol style="list-style-type: none"> 1. Please set the resolution to high. 2. Shorten the shooting distance. 3. Please don't take photos at rainy or foggy weather. 4. Please ensure that you have removed the protective films on IR LEDs and lens before using.

The camera does not take images or record videos

1. Please check if the batteries power is too low.
2. Make sure you have insert the SD card(class 10 or higher, up to 128GB), and the SD card is successfully formatted.
3. Confirm the switch has been adjusted to the 'ON' mode. When the 9s countdown ends, the screen will turn off to enter working mode, then the camera needs to wait for a 'PIR interval time' (depends on your setting) before it officially enters the standby state. At this time, it will start shooting or video recording according to the environmental temperature change.
4. Every time a photo/recording is completed, the camera will enter a static non-triggered state. The specific duration is determined by the 'PIR interval time'. In this state, the camera will not take pictures or record videos until the 'PIR interval time' ends.
5. Confirm the usage scenario. The smaller animal needs to be closer to the camera to trigger.

<p>The night vision effect is poor</p>	<ol style="list-style-type: none"> 1. Check whether the battery is in low. The night shot requires to turn on IR LEDs, thus it will consume more battery power. Therefore, if the battery is insufficient, the night vision effect will be poor or even the night vision will not work. In this case, please check whether the battery is 1.5V (do not use 1.2V rechargeable batteries, sometimes even a brand new battery will not work due to insufficient voltage). 2. In the field, the camera relies on IR LEDs to take photos or videos. If the subject (such as distant plants and small animals) is in a far distance, the photo or video will be fuzzy. Therefore, we recommend that the camera is installed at about 5 meters of the active range of the subject (the smaller size of the objects, the closer the distance is required).
--	--

<p>The wifi connection between App and camera is stuck/ disconnected</p>	<ol style="list-style-type: none"> 1. Due to the high repetition rate of 2.4GHz Wifi frequency, it has potential problems of interference. The camera has a possibility to be interfered by other devices(other routers, microwave ovens, Refrigerators and other electrical appliances), which leads to the WiFi signal reduction or easily disconnected.Please use the DL503 wifi trail camera where there are few interference sources. 2. When downloading the app, please agree to open all required permissions, such as storage permissions. Otherwise WiFi connection may not be successful.
--	---



- 1.Do not use any corrosive cleaners(such as methylated spirits, thinners, etc.) to clean the camera housing and supplied accessory. If necessary, please use a soft and dry cloth to clean the camera.
2. If you will not use the camera for a long time, please remove the batteries and store them in a dry place out of the reach of children.
3. Specification could be subject to modification due to updating. Please regard the actual product as the standard form.