

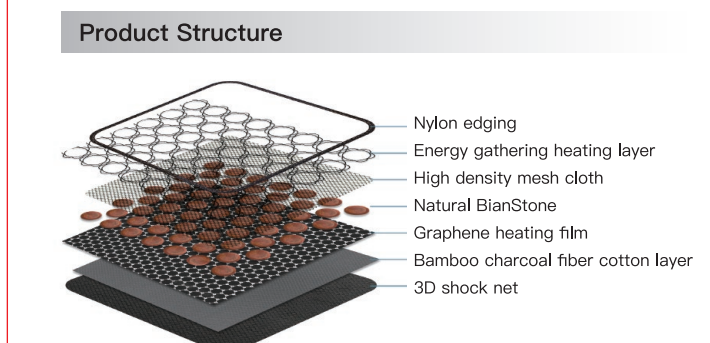


### BianStone & Graphene Far Infrared Heating Therapy MagicPad

#### Product Introduction

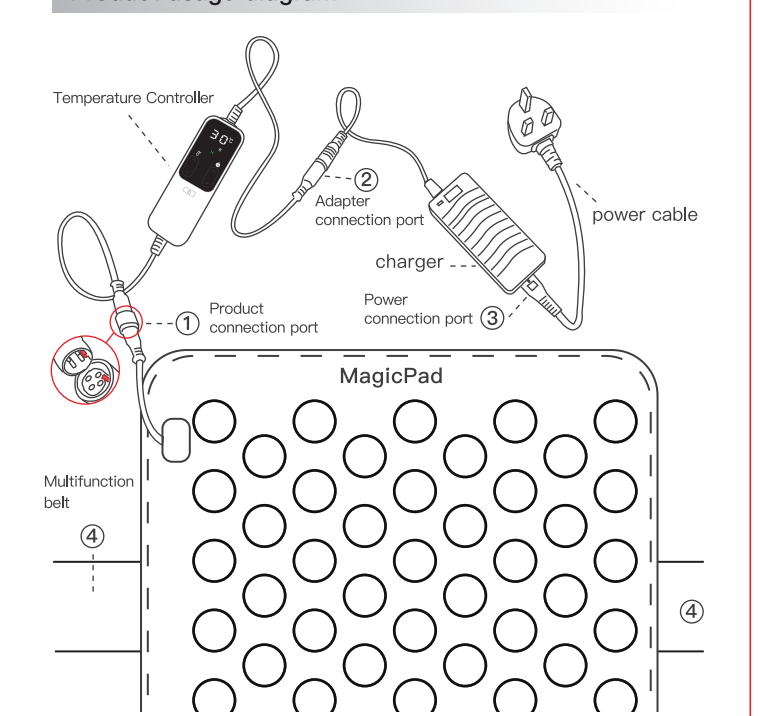
This revolutionary MagicPad adopts a brand-new heat energy injection technology, and it only takes 15 minutes to bring you an unparalleled feeling of total soothing and relaxation in an instant. Human body safety 24V/3A low-voltage input can heat up extremely quickly, emit far infrared rays and negative ions into the body, generate the same frequency resonance with cells, activate cells, promote blood circulation, relieve pain, improve deficiency-cold constitution and sleep quality, warm compress to reduce inflammation, restore physical fitness, stabilize emotions, and help the body absorb nutrients. Long-term use can promote metabolism and enhance human immunity. Using high-purity Graphene heating cloth is used to heat, not by wire, the harmful electromagnetic wave is close to 0, waterproof, fireproof, and electric shock proof. It can be used as a cushion or foot pad, as well as hot compresses for shoulders, stomachs, and waist. Whether at home or at work, it is your good friends/enjoy pure natural BianStone (scraping stone) & Graphene far-infrared warming health care.

- #### Eight characteristics
- Natural premium BianStone
  - Graphene heating Not by wire
  - Far-infrared wavelength 6-15 microns
  - Anti-burning Anti-leakage
  - Negative ions
  - Multifunctional belt
  - Sustainable temperature 20-60°C
  - 3D shockproof



1

### Product usage diagram

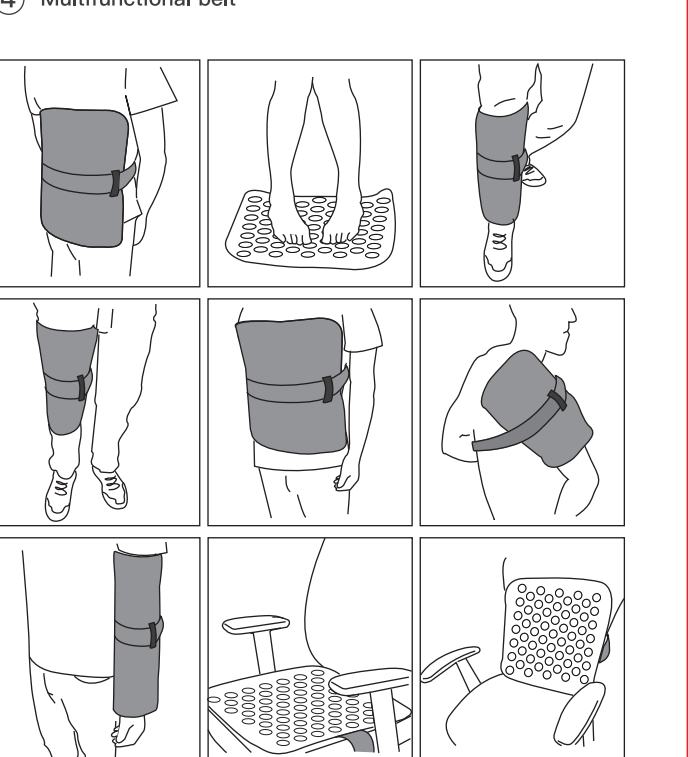


#### Product connection diagram:

- Connect the four-pin connector (male) with the thermostat's four-pin connector (female) according to the limit slot and arrow to confirm the built connection.
- Connect the DC connector (female) at the other end of the thermostat and the DC connector (male) of the power supply end to the limit slot attached to it and rotate and fix it;
- Insert the end of the matching power cord into the power connector.

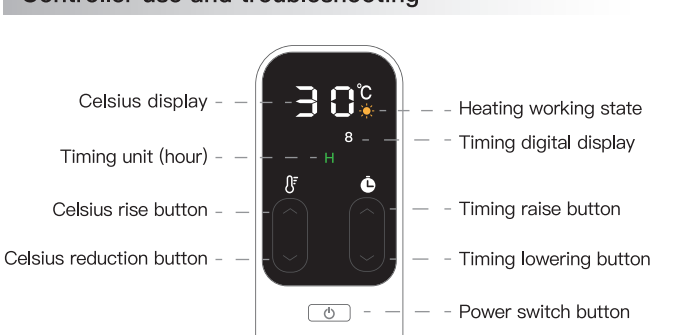
2

### ④ Multifunctional belt



3

### Controller use and troubleshooting



- After the power is turned on, long press the key to turn on or off. The default temperature "30°C" is set to "8" hours when it is used for the first time.
- The icon is for temperature adjustment. Press or to adjust for temperature rise and fall. Note: After the temperature is set, the displayed temperature will automatically jump to the actual sensing temperature.
- The icon is for timing adjustment. Press or for timing adjustment. Note: The timing duration is fixedly set to 2 hours, 4 hours, 6 hours, 8 hours, and 12 hours, and it will automatically stop shutting down after reaching the setting.
- After the temperature is set, the icon flashes to indicate heating is in progress, and when the temperature is reached, the icon disappears to stop heating.
- The controller has a memory function, after the last temperature and time adjustment, the default last adjustment parameters will be used again;

mode	set up	Automatic heating time
A.Warm therapy 1	20-45°C	Can be set manually for 2-12 hours
B.Warm therapy 2	46-50°C	Heating for 4 hours, automatically return to 37°C
C.Hot therapy	51-60°C	Heating for 4 hours, automatically return to 37°C

#### 6. Thermostat display troubleshooting

display	cause of issue	Troubleshooting
E1	1. The thermostat is not connected to the product or the connection is in poor contact. 2. The temperature sensor probe fails.	1. Check the connection line, whether the connection is normal, and it needs to be re-wired. 2. If the product is still abnormal, please contact after-sales service.
EH	High temperature error or temperature out of protection	Turn off the power, turn on the product again after cooling to confirm, if it shows that the product is abnormal, please contact after-sales

4

### The product soothes and improves the following people

- Insomnia, emotional imbalance, long-term fatigue, deficiency and cold constitution;
- Women with physical pains, cold hands and feet, edema and obesity, sub-health;
- Back pain, shoulder and neck pain, numbness of hands and feet;
- Sports injuries.

#### Physiotherapy mode

- Daily Warm Compress Therapy:** Set the thermostat to 30~40°C, for daily use. It is suitable for those with deficient constitution, poor body microcirculation, long-term fatigue, rheumatism pain, cold hands and feet, weakened immunity. It is recommended to use heating for 6 to 10 hours/time.
- Warm Conditioning Therapy:** The thermostat is set to 41~49°C. For daily body conditioning. It is suitable for resisting chronic diseases, long-term fatigue, rheumatic pain, dysmenorrhea, uterine cold, blood stasis, cold hands and feet, poor body microcirculation, decreased immunity, edema, obesity, sub-health; hemorrhoids, male prostatitis and other symptoms to restore health. It is recommended to use 2 to 4 hours / time for heating.
- Hot Therapy:** The thermostat is set to 50°C~60°C, it can be used for heat therapy when necessary. It is used for sports injuries, backache and bone pain, shoulder and neck pain, and numbness in hands and feet. It can accelerate blood circulation, perspiration and detoxification, and effectively relieve pain. Recommended use of heating: 1 hour / time.
- Natural Therapy:** The thermostat power heating switch is turned off (room temperature), natural care on hot days or normal indoor temperature. It feels cool and comfortable when used in Summer; in normal long-term use, the body can absorb the far infrared rays that are continuously and naturally emitted by the BianStone, which is beneficial to the body, which is beneficial to maintain and improve the normal operation of the body's microcirculation system. Recommendations for use: long-term.

#### Specifications

Model : SP450P  
Product name : BianStone & Graphene Far Infrared Heating Therapy MagicPad  
Size : 45cm x 45cm Weight : 1.1 KG  
BianStones quantity : 59 PCS  
Therapy mode : Room temperature natural therapy, warm therapy, hot therapy  
Adapter input voltage : 100-240V-50/60hz 2.0A  
Adapter output voltage/current : 24V 2.5A  
MagicPad power : 72W max  
MagicPad Current and Voltage : Human body safety low voltage max 24V/3A  
Heating device : Graphene heating film  
Adjustable range of temperature controller : 20-60°C  
The temperature controller can set the timing : 2-12 hours  
Heating temperature : 20-60°C up and down button adjustment  
Accessories : 3D shock net, Density mesh cloth, Bamboo charcoal fiber cotton (freeproof)

5

### Package Contents

- \* MagicPad x1
- \* Manual book x1
- \* Temperature controller x1
- \* Power adapter x1

#### Warranty description

Zikko provides quality warranty services for hardware products and accessories in the packaging and defects in materials and workmanship. The warranty period of the Dr.Rock MagicPad (including temperature controller) is one year from the date of purchase of the product, and the included storage bag is guaranteed for 6 months. Damages caused by normal wear or aging, accidents, improper use, alterations, etc. are not covered by this warranty. How to obtain after-sales service: Please call the Zikko authorized brand or go to the authorized retailer's purchase place or online customer service for after-sales service, and please provide the relevant purchase credentials (invoice or purchase record).

#### Product maintenance methods

You can use a wet towel to wipe the contaminated part when it is not powered on, or use a disinfectant wet towel to disinfect it regularly, and then turn it on for heating after drying.

#### ⚠ Precautions

- Read the manual carefully before use and use it in accordance with the operating instructions.
- Don't let it be used alone by people who cannot take care of themselves, infants or children who are not sensitive to heat.
- It is forbidden to use in water and humid environment.
- Do not dry clean or wash. You can wipe the contaminated part with a wet towel when the power is not turned on, and then turn on the power to heat it after drying.
- Do not insert sharp objects into this product.
- Do not place bedding and other items in a small area to cover the heating area when the product is heated to prevent local overheating and causing malfunctions.
- It is forbidden to place flammable materials such as fireworks and lighters on the surface of the product to prevent fire.
- Please confirm whether the power supply is cut off before going out.
- Using the heating function, the temperature can be adjusted according to the tolerance of the skin. In order to prevent skin burns. If you feel unwell, stop using it in time.

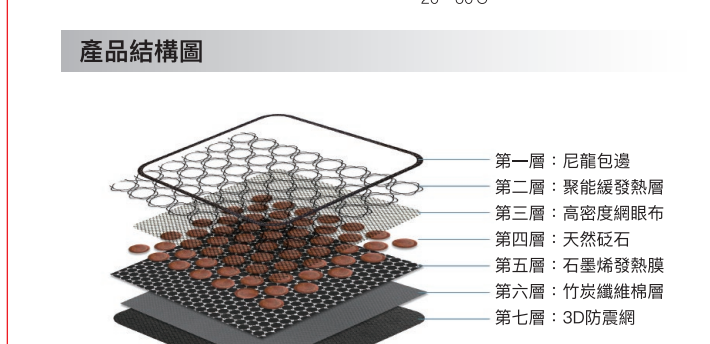
6

### 砭石&石墨烯遠紅外線溫陽百變墊

#### 產品簡介

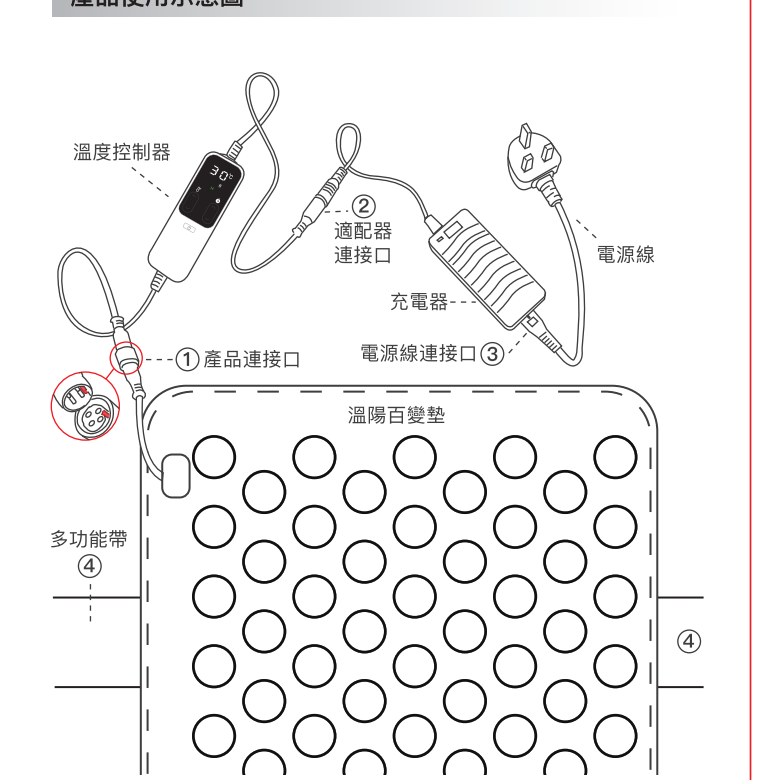
這款革命性的溫陽百變墊採用了全新熱能注入技術，只需15分鐘就為您帶來期間全然舒緩、放鬆的無比感受。人體安全24V/3A 低電壓輸入又可快速升温，發出遠紅外線和負離子注入身體，與細胞產生同頻共振，活化細胞，促進血液循環，緩解疼痛，改善虛寒體質和睡眠質量，溫敷消炎，恢復體能，穩定情緒，並能幫助身體吸收營養，長期使用，可以促進新陳代謝，提升人體免疫力。採用高純度石墨烯發熱布發熱，絕非用電線發熱，有音電磁波接近為0，防水防火防觸電。可作坐墊或腳墊，以及敷熱、肚、腰使用；無論居家還是辦公，皆為良朋好友。快來享受純天然砭石&石墨烯遠紅外線溫熱保健護理！

- #### 八大特點
- 天然優質砭石
  - 石墨烯發熱膜
  - 遠紅外線波長6-15微米
  - 防火防火防觸電
  - 負離子
  - 多功能帶
  - 發熱溫度約 20-60°C
  - 3D防震網



7

### 產品使用示意圖

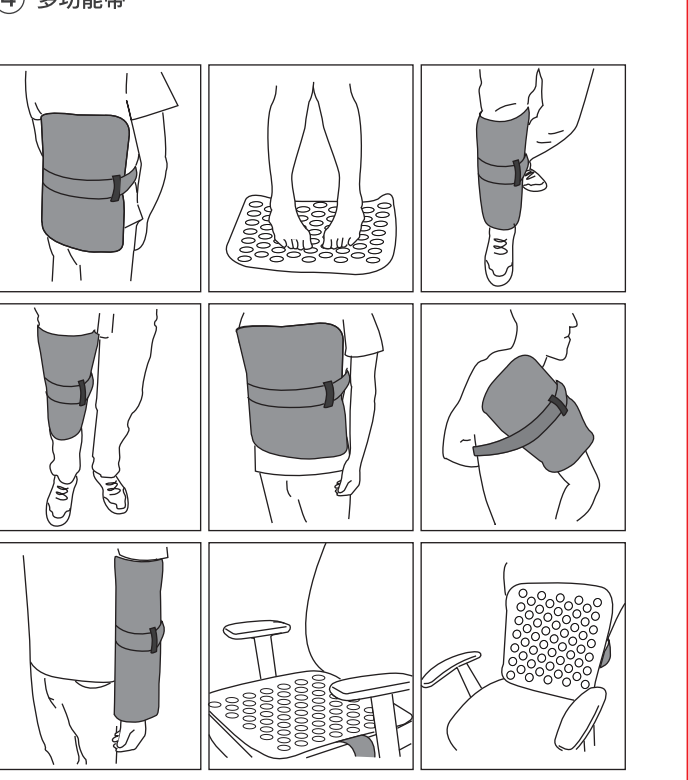


#### 產品連接示意圖:

- 將四針接頭(公頭)與溫控制器四針接頭(母座)，按限位槽及箭頭指示對接；將溫控制器另一端DC接頭(母座)與電源端DC接頭(公頭)依插頭限位槽插入對接旋轉固定；
- 將匹配電源線尾端插入電源接口。

8

### ④ 多功能帶



9

### 溫控制器使用方法和故障排除



- 電源連接後，長按 鍵為開機或關機。首次使用開機默認顯示設定溫度「30°C」和時間設定為「8」小時；
- 圖標為溫度調節，輕按 鍵或 鍵為溫度的高低上、下調節。注意：溫度調節後，顯示屏顯示溫度會自行跳至實際感應溫度；
- 圖標為定時調節，輕按 鍵或 鍵為定時時長調整。注意：定時時長固定設置為2小時、4小時、6小時、8小時、12小時，到達設定時長後會自動停止工作並關機；
- 溫度設定後， 圖標閃爍為加熱工作中，到達預設溫度後， 圖標消失為停止加熱工作；
- 溫控制器有記憶功能，再上次溫度及時間調整後，再次使用默認上次調整參數；

溫度模式	溫度設置	自動加熱時間
A.溫敷1	20-45°C	可手動定時運行2-12小時
B.溫敷2	46-50°C	最多加熱4小時，自動回到37°C
C.熱敷	51-60°C	最多加熱4小時，自動回到37°C

溫控制器顯示故障	故障原因	故障排除
E1	1. 溫控制器與產品未連接或連接接觸不良； 2. 溫度感應探頭失效。	1. 檢查溫控制器與產品之間的連接線，接觸不良； 2. 如無線仍顯示產品異常，請聯繫售後。
EH	高溫度錯誤或溫度超出保護值	關閉電源，待產品冷卻後再次開機確認，如仍顯示為產品異常，請聯繫售後

10

### 產品特別舒緩及改善以下人士

- 失眠、長期疲勞、情緒波動、虛寒體質；
- 女性生理不適、腳趾冰冷、水腫肥胖、亞健康；
- 腰酸背痛、肩頸痛、手腳麻痺；
- 運動損傷。

#### 療康模式

- 日常溫敷療法:** 溫控制器設置至30~40°C，日常用。適用於虛寒體質、身體微循環差、長期疲勞、風濕疼痛、手腳冰冷、免疫力下降者、加熱使用建議6~10小時/每次。
- 溫熱調理療法:** 溫控制器設置至41~49°C，日常調理身體用。適用於抵抗頑疾、長期疲勞、風濕疼痛、痛經、宮寒、血崩、手腳冰冷、身體微循環差、免疫力下降者、水腫肥胖、亞健康；痔瘡、男性前列腺炎等症狀恢復健康。加熱使用建議2~4小時/每次。
- 熱敷:** 溫控制器設置至50°C~60°C，需要時熱敷調理用。適用於運動損傷、腰酸背痛、肩頸痛、手腳麻痺。可以加速血液循環、排汗排毒，有效舒緩及改善痛症。加熱使用建議：1小時/每次。
- 室溫自然療法:** 溫控制器電源加熱關閉(室溫) 熱天或平時室內溫度天然護理。夏季使用時能感到涼爽舒適；平時長期使用時，更可以使身體吸收砭石不斷地自然發出的有益於身體的遠紅外線，有利於保持和改善身體微循環系統正常運作。使用建議：長期。

#### 參數規格

型號 : SP450P  
產品名稱 : Zikko (即Rock) Dr.Rock (給醫生)砭石&石墨烯遠紅外線溫陽百變墊  
尺寸 : 45cm x 45cm / 重量 : 1.1 KG  
砭石顆粒 : 59粒  
理療模式 : 室溫自然療法、溫敷、熱敷  
適配器輸入電壓 : 100-240V-50/60Hz 2.0A  
適配器輸出電壓/電流 : 24V/2.5A  
溫陽百變墊最大功率 : 72W 最大  
溫陽百變墊電壓電流 : 人體安全低電壓最大 24V/3A  
加熱裝置 : 石墨烯發熱膜  
溫度控制器可調節範圍 : 20-60°C  
溫度控制器可設置定時 : 2-12小時  
發熱溫度 : 20-60°C 升降按鍵調節  
輔料 : 3D防震網、高密度網眼布、竹炭纖維棉層(防火)

11

### 包裝內容

- \*溫陽百變墊 x1
- \*電源適配器 x1
- \*溫度控制器 x1
- \*使用說明書 x1

#### 質保說明

Zikko為包裝中的硬件產品和配件材料及工藝缺陷提供質量保修服務，溫陽百變墊(含溫度控制器) 保修期限為自您購買該產品之日起一年，正常的磨損或老化以及意外、不正確使用改造等造成損壞，不在此保修範圍之內。獲取售後服務方式：請致電Zikko授權品牌商或前往授權零售商購買處或網絡咨詢售後，同時請提供相關購買憑證。(發票或購買記錄)

#### 產品維護和保養方法

可在不通電情況下，用濕毛巾對污染部分進行擦拭，或者定期用消毒濕巾進行消毒，晾乾後再通電加熱使用。

#### ⚠ 注意事項

- 使用前詳細閱讀說明書，並按照操作說明使用。
- 不要讓生活不能自理、嬰幼兒或對熱不敏感人群單獨使用。
- 禁止在有水和潮濕環境下使用。
- 不得乾洗或洗滌。可在不通電情況下，用濕毛巾對污染部分進行擦拭，晾乾後再通電加熱使用。
- 勿將尖銳物體插入本產品。
- 請勿在本產品加熱時將被褥等物品放置在加熱區域小面積覆蓋，防止局部過熱導致故障。
- 產品表面禁止放置煙花爆竹、打火機等易燃物品，防止引發火災。
- 使用結束、外出前，請確認電源是否切斷。
- 使用加熱功能，溫度可根據皮膚耐受程度進行調節，為防止皮膚損傷，請根據自己身體體質，合理調節溫度數值，如有不適及時停止使用。

12

ENGLISH 1 ~ 6

繁體中文 7 ~ 12

Wish you health and peace.  
願健康與平安歸給您。

#### After Service Card

售後服務保障卡

Product Name 產品名稱	
Product Model 產品型號	
Product Serial No. 產品序列號	
Purchasing Date 購買日期	
Customer Name 顧客姓名	
Phone 聯系電話	
E-Mail 郵箱	
Add. 聯系地址	
Distributor Name 經銷商名稱	
Phone 聯系電話	
E-Mail 郵箱	
Sign/Seal Here: 經銷商簽章:	