

HYPERLITE
www.hi-hyperlite.com

Use hyperlite LED wall pack light,
enjoy brighter life now

If you need more information about our lights,
please email us or call us 24h

Email: info@hi-hyperlite.com
Toll-free number: +1(855) 688 7879

HYPERLITE
LED LIGHTING
www.hi-hyperlite.com

LEARN MORE
Instruction manual



Thanks for your purchase!

LED WALLPACK LIGHT WALL.E series

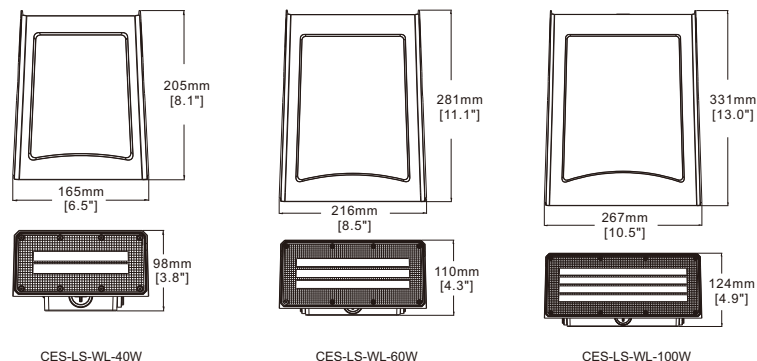


FEATURES & SPECIFICATIONS

◆ APPLICATION

Ideal for building, loading bay, commercial entryways, and more outdoor areas.

Performance Data		CES-LS-WL-40W	CES-LS-WL-60W	CES-LS-WL-100W
General	Lumens	5200 lm	7800 lm	13000lm
	Efficacy	130 lm/w		
	CCT	5000K		
	Beam Angle	Full Cut-off		
	CRI	>70		
	LED	Lumileds 3030		
	Life span	>60,000 hours		
Electrical	Color finish	Bronze		
	Power	40W	60W	100W
	Input Voltage	AC120-277V		
	Dimming	1 - 10V		
	Power factor	>0.9		
Physical & Listing	Surge Protection	4KV		
	Temperature	-40°F-122°F(-40°C to 50°C)		
	Sensor	/		
	Mounting	Wall Mount		
	Listing	UL / CE / ROHS		
	IP Rating	IP 65		
	Warranty	5 Years		

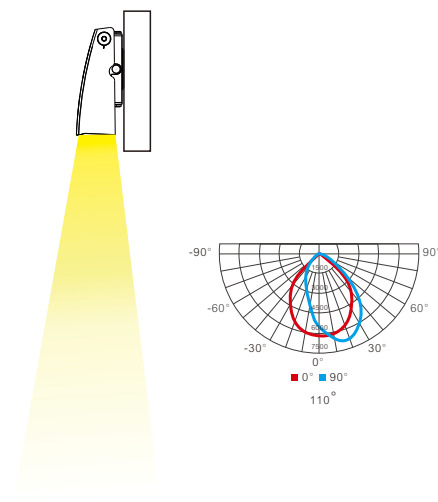


PACKAGING INFORMATION

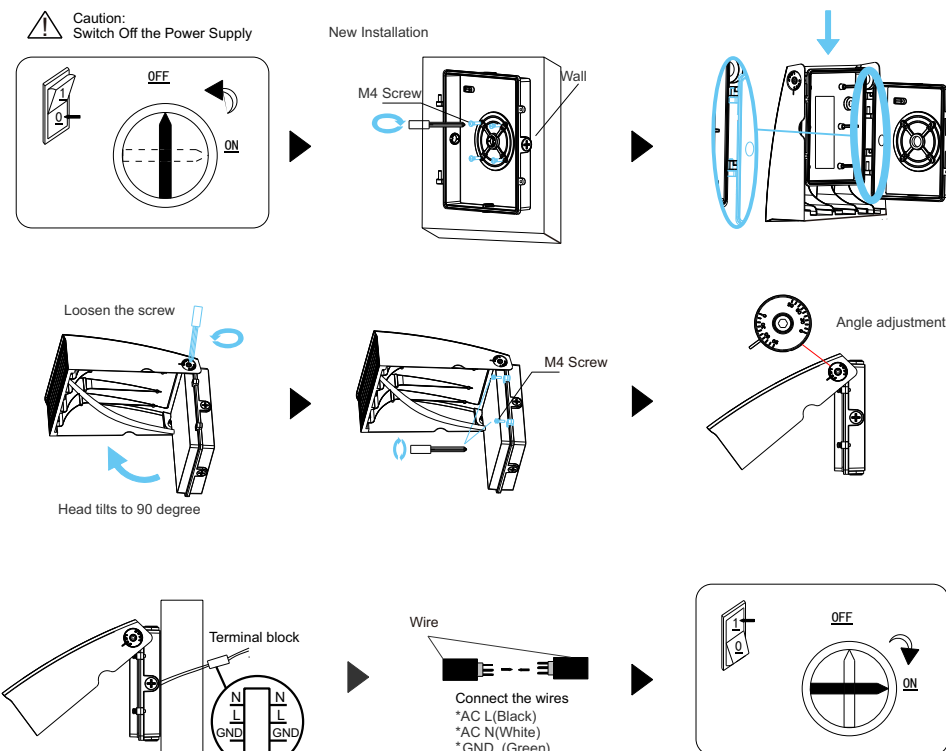
Model	Wattage	Net Weight	Gross Weight	CTN Size
CES-LS-WL-40W	40W	2.9 lb	3.7 lb	9.6"*8.1"*5.5"
CES-LS-WL-60W	60W	4.6 lb	5.7 lb	12.5"*10.2"*6.7"
CES-LS-WL-100W	100W	6.0 lb	7.0 lb	14.7"*12.2"*6.7"

FULL CUT-OFF DISTRIBUTION

40W/5200lm 19.0fc	60W/7800lm 24.9fc	100W/13000lm 54.7fc	10ft
40W/5200lm 4.1fc	60W/7800lm 6.2fc	100W/13000lm 13.6fc	20ft
40W/5200lm 2.4fc	60W/7800lm 3.5fc	100W/13000lm 7.7fc	25ft
40W/5200lm 1.6fc	60W/7800lm 2.2fc	100W/13000lm 4.9fc	30ft
40W/5200lm 0.8fc	60W/21000lm 1.1fc	100W/13000lm 2.5fc	42ft



INSTALLATION INSTRUCTIONS



Please also make sure the wire connection is fixed perfectly before using.

- This product should be installed by a fully certified electrician in accordance with local building and electrical codes.
- Due to risk of electric shock, ensure that the main power source and circuit breakers are switched off before performing any installation or wiring procedures.
- Failure to properly support the fixture during installation may cause damage or injury, for which the manufacturer is not responsible. Ensure the light hook is securely mounted and will support the weight of the fixture.
- Disconnect product and allow cooling prior to any further steps.
- Please read the instruction manual before installation and keep it for future reference.

LED Wall Pack Light (WALL.E Series)

Features

- UL&CUL No E483348 Suitable for Wet Locations

ATTENTION

BEFORE YOU INSTALL

Read these instructions completely and carefully.

⚠ WARNING/AVERTISSEMENT

RISK OF ELECTRIC SHOCK

- Turn power off before inspection, installation or removal.
- Properly ground electrical enclosure.
- Follow all NEC and local codes.
- Use only UL or IEC approved wire for input/output connections.

Save These Instructions

Use only in the manner intended by the manufacturer.
If you have any questions, contact the manufacturer.

Prepare Electrical Wiring



Electrical Requirements

The LED driver must be supplied with 120-277 VAC, 50/60 Hz per product label and connected to an individual properly grounded branch circuit, protected by a 15 or 20 ampere circuit breaker.



Grounding Instructions

The grounding and bonding of the overall system shall be done in accordance with National Electric Code (NEC) Article 600 and local codes.



*Please connect the input wire in correct way, white is ACN, black is ACL, green is GROUND connection.

*Please also make sure the wire connection is fixed perfectly before using.

APPLICATION



FOOTCANDLE LIGHT GUIDE

Footcandles are the most common unit of measure used by lighting professionals to calculate light levels in businesses and outdoor spaces. A footcandle is defined as the illuminance on a one square foot surface from a uniform source of light. The Illuminating Engineering Society (IES) recommends the following footcandle levels to ensure adequate illumination and safety for occupants. Below is a guideline for common areas to assist in achieving appropriate light levels with the greatest energy-efficiency.

Building Area & Task	Average Maintained Footcandles (Horizontal) (FC)	Range of Maintained Footcandles (Horizontal) (FC)	Average Maintained Footcandles (Vertical) (FC)	Range of Maintained Footcandles (Vertical) (FC)	Comments
----------------------	--	---	--	---	----------

WAREHOUSING & STORAGE

Bulky Items—Large Labels	10		5		
Small Items—Small Labels	30		15		
Cold Storage	30-40	10-30	10	5-15	
Open Warehouse	30-40	10-30			
Warehouse w/Aisles	30-40	10-30	10	5-15	

COMMERCIAL OFFICE

Open Office	40	30-50			@30" Above Finished Floor (AFF)
Private Office	40	30-50			@30" AFF
Conference Room	30				Matte surface reflectance for the table 40% recommended
Restroom	18	75-30			
Lunch & Break Room	15	5-20			

EDUCATIONAL (SCHOOLS)

Classroom	40	30-50			@30" AFF
Gymnasium					
Class I (Pro or Div. 1 College)	125		30		
Class II (Div. 2 or 3 College)	80		20		
Class III (High School)	50		150		
Class IV (Elementary)	30		100		
Auditorium	75	3-10	5	2.5-10	
Corridor	25	10-40			

▲ This guide is a collaborative effort of Energy Trust of Oregon and the Lighting Design Lab, Seattle, Washington.

Building Area & Task	Average Maintained Footcandles (Horizontal) (FC)	Range of Maintained Footcandles (Horizontal) (FC)	Average Maintained Footcandles (Vertical) (FC)	Range of Maintained Footcandles (Vertical) (FC)	Comments
INDUSTRIAL/MANUFACTURING					
Assembly					
Simple (Large Item)	30		15	15-60	
Difficult (fine)	100	10-30	10	50-200	
Component Manufacturing					
Large	30	10-30	30	15-60	
Medium	70-80	25-100	50	25-100	
EXTERIOR					
Parking (Covered)	5				1FC min, 10:1 Max to Min Uniformity
Parking (Open) (Medium Activity)					
Lighting Zone 3 (Urban)	1.5	75-3	0.8	0.4-1.6	
Lighting Zone 2 (suburban)	1	0.5-2	0.6	0.3-1.2	
Gas Station Canopy	12.5	10-15			
Safety (Building Exterior)	1	0.5-2			If security is an issue—raise average level to 3
RETAIL					
General Retail (Ambient)		50			
Department Store	40	20 - 80	15	7.5-30	
Perimeter			75	35-150	
Accent Lighting (Displays)					3-10 times greater than ambient light levels
AUTOMOTIVE					
Showroom	70-80	25-100	10	7.5-30	
Service Area	50	25-10	30	15-30	
Sales Lot (Exterior)					
Lighting Zone 3 (Urban)	20	10-40	20	10-40	
Lighting Zone 2 (Suburban)	15	7.5-30	15	7.5-30	
GROCERY					
Circulation	20	10-40	7.5	3.5-15	
General Retail	70-80	25-100	20	10-40	
Perimeter			50	25-100	
BANKING					
ATM	20	10-40	15		Vertical at face of ATM

NOTES:

• This guide is based on information gathered from the IES 'The Lighting Handbook' 10th Edition. It is highly recommended that all lighting professionals refer to the full IES guide when specifying lighting projects.

• At least half of users are in the 25 - 65 age range

• Horizontal—horizontal plane that average maintained foot-candles are measured

• Vertical—vertical plane the average maintained foot-candles are measured

• It is the responsibility of the to determine and provide appropriate lighting levels for each space

CERTIFICATE OF COMPLIANCE

UL CERTIFICATION

Certificate Number: E483348

Report Reference: E483348

Issue Date: 2017-DECEMBER-26



Additional Information:

See the UL Online Certifications Directory at www.ul.com/database for additional information

▲ Only those products bearing the UL Certification Mark should be considered as being covered by UL's Certification and Follow-Up Service.

▲ Look for the UL Certification Mark on the product

NAMING RULES

CES-LS- WL-45WY-RSC

Example: CES-LS-WL-60W50SB-BZ

Base						
Series	Power	X CCT	Y Driver	R CRI	S Sensor	C Color
CES-LS-WL	40W 60W 100W	50 5000K	SB Sosen Dimmable	Blank Ra>70	S1 Daylight sensor Blank No sensors	BZ Bronze

More products...

Linear High Bay WILL Series

UL LISTED ISO 9001 CE RoHS

- Downy light, no glare, simple design
- High light efficiency, up to 130lm/w
- High Quality PMMA Lens, Non-flicker, protect your eyes
- Super bright LM80 LED 2835SMD, Ra>80
- 5 years warranty



FLOOD Light GUARDER Series

UL LISTED CE RoHS IP65

- Architecturally attractive and modern design
- Ideal for indoor or outdoor applications
- Finished with UV resistant powder coat, excellent corrosion protection
- Optional installation of knuckle, Wall mount
- 5 years Warranty



UFO HIGH BAY Light TALE Series

UL LISTED ISO 9001 CE RoHS IP65

- Designed for comfort your work environment
- Efficiency up to 140LPW
- Optional internal sensor
- 1-10V Dimming
- 5 years Warranty



Area Light ARES Series

UL LISTED ISO 9001 CE RoHS IP65

- Maximum power up to 300w, up to 150lm/w
- Optimized mount kit allows single person installation
- Demountable design, easy for maintenance
- Up-to-date design, with vertical lens and gather 4 LED in one bulb
- 5 years warranty



HYPERLITE

www.hi-hyperlite.com

