

HYPERLITE

www.hi-hyperlite.com

HYPERLITE

www.hi-hyperlite.com

A good & brand new product. Congrats!
Enjoy brighter life now.

Feel free to contact us
Email: service@hi-hyperlite.com
Toll-free number: +1(855) 688 7879



SATURN SERIES

LED HIGH BAY LIGHT

RELIABLE SOLID BRIGHT

LED HIGH BAY LIGHT

SATURN Series

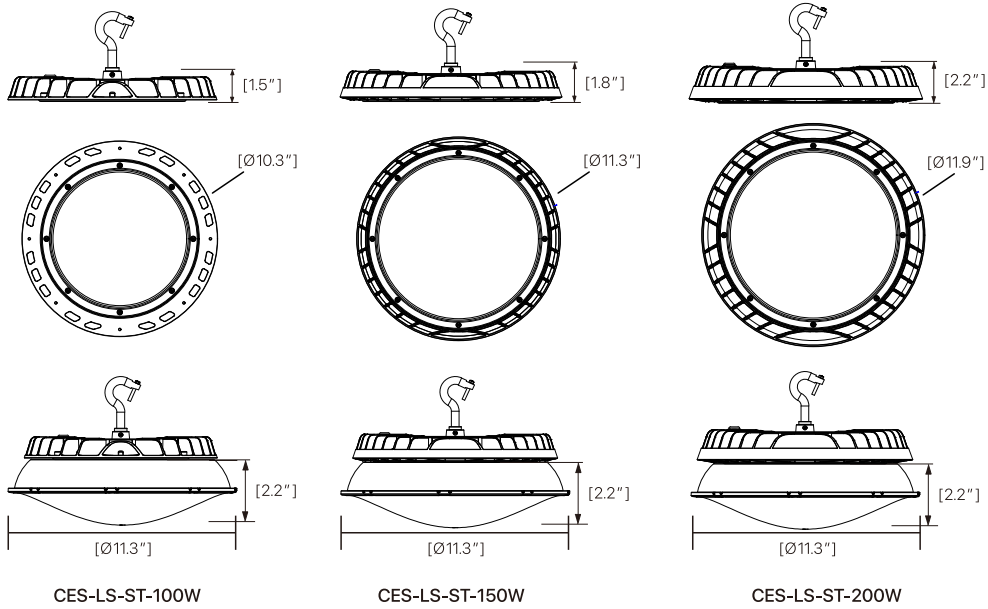


Certification:



FEATURES & SPECIFICATIONS

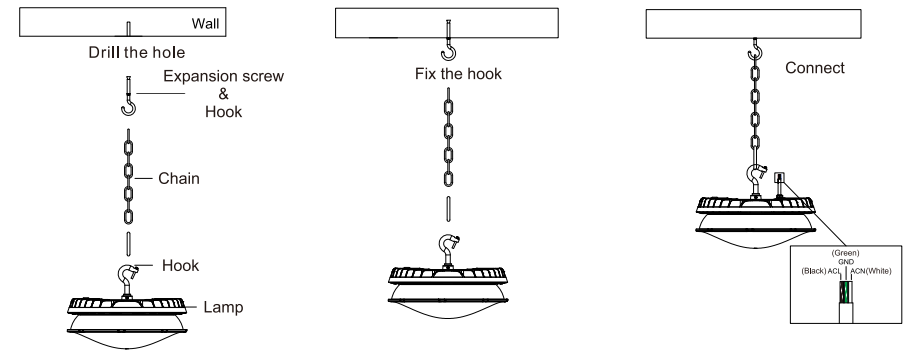
Performance Data		CES-LS-ST-100W	CES-LS-ST-150W	CES-LS-ST-200W
General	Lumens	14000lm (Reflector 12500lm)	21000lm (Reflector 18750lm)	28000lm (Reflector 25000lm)
	Efficacy	140 lm/W (Reflector 125lm/W)		
	CCT	5000K		
	Beam angle	120° (Reflector 240°)		
	CRI	>70		
	Life span	>30,000 hours		
	Color finish	Black		
Electrical	Power	100W	150W	200W
	Input voltage	AC 120V		
	Dimming	/		
	Power factor	>0.9		
	Temperature	-58°F to 104°F (-50°C to 40°C)		
Physical & Listing	Mounting	Hook		
	IP rating	IP 65		
	Warranty	36 Months		



DISTRIBUTION



INSTALLATION



PACKAGING INFORMATION

	Model	Wattage	Qty/Ctn	Net Weight	Gross Weight	CTN Size
120° lens	CES-LS-ST-100W	100W	1	2.4 ± 1 lbs	3.5 ± 1 lbs	12.7"*12.7"*4.1"
			4	9.7 ± 1 lbs	11.7 ± 1 lbs	12.7"*12.7"*14.5"
			6	14.6 ± 1 lbs	17.0 ± 1 lbs	12.7"*12.7"*21.4"
	CES-LS-ST-150W	150W	1	3.8 ± 1 lbs	5.3 ± 1 lbs	13.7"*13.7"*4.1"
			2	7.5 ± 1 lbs	9.5 ± 1 lbs	13.7"*13.7"*7.5"
			4	15.0 ± 1 lbs	16.8 ± 1 lbs	13.7"*13.7"*14.8"
CES-LS-ST-200W	200W	1	4.3 ± 1 lbs	5.5 ± 1 lbs	13.7"*13.7"*4.1"	
		2	8.6 ± 1 lbs	10.1 ± 1 lbs	13.7"*13.7"*7.5"	
		4	17.3 ± 1 lbs	19.6 ± 1 lbs	13.7"*13.7"*14.8"	
Reflector	CES-LS-ST-100W	100W	1	3.2 ± 1 lbs	4.76 ± 1 lbs	13.2"*13.2"*7.1"
	CES-LS-ST-150W	150W	1	4.6 ± 1 lbs	6.2 ± 1 lbs	13.2"*13.2"*7.1"
	CES-LS-ST-200W	200W	1	5.1 ± 1 lbs	6.4 ± 1 lbs	13.2"*13.2"*7.1"



▲ Barn



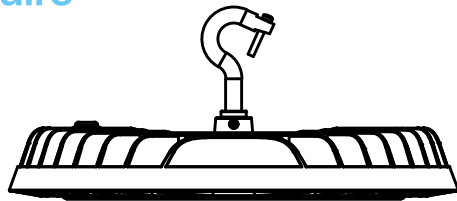
▲ Warehouse

HYPERLITE LED Luminaire

Industrial LED High Bay Lighting (SATURN Series)

Features

- ETL NO 5024172 Suitable for Wet Locations.
- IP65 Rated Ingress Protection.



ATTENTION BEFORE YOU INSTALL
Read these instructions completely and carefully.

<p>⚠ WARNING</p>
<p>RISK OF ELECTRIC SHOCK</p> <ul style="list-style-type: none"> • Turn power off before inspection, installation or removal. • Properly ground electrical enclosure. • Follow all NEC and local codes. • Use only UL or IEC approved wire for input/output connections.

Prepare Electrical Wiring



Electrical Requirements
The LED driver must be supplied with 120VAC, 60Hz per product label and connected to an individual properly grounded branch circuit, protected by a 15 or 20 ampere circuit breaker.



Grounding Instructions
The grounding and bonding of the overall system shall be done in accordance with National Electric Code (NEC) Article 600 and local codes.

Save These Instructions

Use only in the manner intended by the manufacturer.
If you have any questions, contact the manufacturer.

Note: This equipment has been tested and found to comply with the limits for a Class A digital device, pursuant to part 15 of the FCC Rules. These limits are designed to provide reasonable protection against harmful interference when the equipment is operated in a commercial environment. This equipment generates, uses, and can radiate radio frequency energy and, if not installed and used in accordance with the instruction manual, may cause harmful interference to radio communications. Operation of this equipment in a residential area is likely to cause harmful interference in which case the user will be required to correct the interference at his own expense.

	<p>1. Please check that the plug is in good condition. Install the lamp and plug it into the socket. Then you can test the light fixture.</p>
	<p>2. Please connect the input wire in correct way, black wire is L, white wire is N, green wire is ground connection. Please also make sure the wire connection is fixed perfectly before using.</p>

READ THOROUGHLY BEFORE INSTALLATION

⚠ WARNING! FIXTURES MUST BE GROUNDED and installed in accordance with the National Electrical Code and all local codes. Failure to do so may increase the **RISK OF PERSONAL INJURY, PROPERTY DAMAGE, FIRE AND DEATH.**

⚠ WARNING! Dangerous voltage exist within the unit and all precautions usually observed in handling high voltage equipment should be observed when replacing light engine or otherwise servicing luminaires. Disregarding this warning could result in electrical shock and possible injury to the individual installing or servicing this equipment. Installation, service and maintenance of luminaires should be done by a **qualified licensed electrician.**

⚠ CAUTION! To reduce the risk of death, personal injury or property damage from fire, electric shock, falling parts, cuts/abrasions, and other hazards please read all warnings and instructions included with and on the fixture box and all fixture labels.

⚠ NOTE!

- This equipment is only for professional installation. Non-professional personnel shall not remove or install the equipment.
- To avoid damage, falling, electric shock or fire, please do not modify the lamp or replace accessories without confirming with the supplier.
- Maintenance/installation and replacement the lamps , please confirm to cut off the power supply, and the lamps have set up a cooling. Please make sure the lamps properly installed before processing power.
- Ensure the accurate and reliable connection.
- Ensure that the product around the vent, the lamp cannot violate any fire prevention regulations when using.

Carefully read these instructions before installing product and keep it for future reference. If you do not understand these instructions, before starting any work, contact service@hi-hyperlite.com or (855) 688-7879.

FOOTCANDLE LIGHT GUIDE

Footcandles are the most common unit of measure used by lighting professionals to calculate light levels in businesses and outdoor spaces. A footcandle is defined the illuminance on a one square foot surface from a uniform source of light. The Illuminating Engineering Society (IES) recommends the following footcandle levels to ensure adequate illumination and safety for occupants. Below is a guideline for common areas to assist in achieving appropriate light levels with the greatest energy-efficiency.

Building Area & Task	Average Maintained Footcandles (Horizontal) (FC)	Range of Maintained Footcandles (Horizontal) (FC)	Average Maintained Footcandles (Vertical) (FC)	Range of Maintained Footcandles (Vertical) (FC)	Comments
WAREHOUSING & STORAGE					
Bulky Items—Large Labels	10		5		
Small Items—Small Labels	30		15		
Cold Storage	30-40	10-30	10	5-15	
Open Warehouse	30-40	10-30			
Warehouse w/Aisles	30-40	10-30	10	5-15	
COMMERCIAL OFFICE					
Open Office	40	30-50			@30" Above Finished Floor (AFF)
Private Office	40	30-50			@30" AFF
Conference Room	30				Matte surface reflectance for the table 40% recommended
Restroom	18	75-30			
Lunch & Break Room	15	5-20			
EDUCATIONAL (SCHOOLS)					
Classroom	40	30-50			@30" AFF
Gymnasium					
Class I (Pro or Div. 1 College)	125		30		
Class II (Div. 2 or 3 College)	80		20		
Class III (High School)	50		150		
Class IV (Elementary)	30		100		
Auditorium	75	3-10	5	2.5-10	
Corridor	25	10-40			

▲ This guide is a collaborative effort of Energy Trust of Oregon and the Lighting Design Lab, Seattle, Washington.

Building Area & Task	Average Maintained Footcandles (Horizontal) (FC)	Range of Maintained Footcandles (Horizontal) (FC)	Average Maintained Footcandles (Vertical) (FC)	Range of Maintained Footcandles (Vertical) (FC)	Comments
INDUSTRIAL/MANUFACTURING					
Assembly					
Simple (Large Item)	30		15	15-60	
Difficult (fine)	100	10-30	10	50-200	
Component Manufacturing					
Large	30	10-30	30	15-60	
Medium	70-80	25-100	50	25-100	
EXTERIOR					
Parking (Covered)	5				1FC min, 10:1 Max to Min Uniformity
Parking (Open) (Medium Activity)					
Lighting Zone 3 (Urban)	1.5	75-3	0.8	0.4-1.6	
Lighting Zone 2 (suburban)	1	0.5-2	0.6	0.3-1.2	
Gas Station Canopy	12.5	10-15			
Safety (Building Exterior)	1	0.5-2			If security is an issue—raise average level to 3
RETAIL					
General Retail (Ambient)		50			
Department Store	40	20-80	15	7.5-30	
Perimeter			75	35-150	
Accent Lighting (Displays)					3-10 times greater than ambient light levels
AUTOMOTIVE					
Showroom	70-80	25-100	10	7.5-30	
Service Area	50	25-10	30	15-30	
Sales Lot (Exterior)					
Lighting Zone 3 (Urban)	20	10-40	20	10-40	
Lighting Zone 2 (Suburban)	15	7.5-30	15	7.5-30	
GROCERY					
Circulation	20	10-40	7.5	3.5-15	
General Retail	70-80	25-100	20	10-40	
Perimeter			50	25-100	
BANKING					
ATM	20	10-40	15		Vertical at face of ATM

NOTES:

- This guide is based on information gathered from the IES 'The Lighting Handbook' 10th Edition. It is highly recommended that all lighting professionals refer to the full IES guide when specifying lighting projects.
- At least half of users are in the 25 - 65 age range.

- Horizontal—horizontal plane that average maintained foot-candles are measured.
- Vertical—vertical plane the average maintained foot-candles are measured.
- It is the responsibility of the to determine and provide appropriate lighting levels for each space.

■ LED High Bay Light



Hero Black Series



Hero White Series



Radar Series



Saturn Series



Saturn Series



Ray Series

■ LED Wall Pack Light



Space Series



Oval Series



Wall. E Series

■ LED Area Light



Hope Series

■ LED Canopy Light



Vega Series

■ LED Flood Light



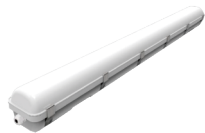
Mars Series

■ LED Grow Light



Groplanner O Series

■ Vapor Tight Light



Capsule Series

■ Temporary Work Light



Hive Series

More products...

HYPERLITE
www.hi-hyperlite.com

