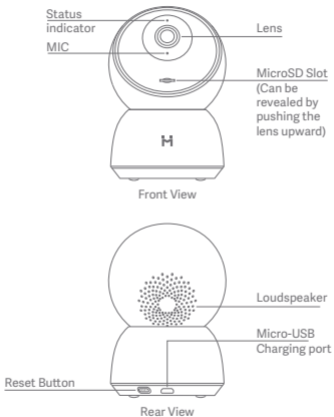


IMILAB Home Security Camera A1 User Manual

Read this manual carefully before use, and retain it for future reference.

Product Overview



Package Contents : IMILAB Home Security Camera A1 x 1, power cable x 1, wall mounting accessories pack x 1, user manual x 1

Installation

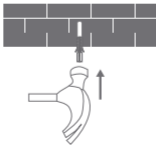
IMILAB Home Security Camera A1 can be placed on a number of horizontal surfaces, such as a writing desk, dining table, and coffee table. It can also be mounted on the wall.

Mounted IMILAB Home Security Camera A1 on a Wall

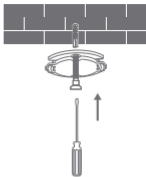
1. Drill two holes on the wall by using the base of the IMILAB Home Security Camera A1 as a template. It is recommended that you mark the locations of the hole with a pencil before drilling. The diameter of each hole is approximately 6 mm, and the depth is approximately 25 mm.



2. Insert the two plastic anchors into the holes on the wall.



3. Make sure to position the base unit so that the arrow is pointing up. Secure the base unit in place by tightening the screws into the plastic anchors.



4. Matching the grooves on the bottom of the camera unit with the raised area on the base unit. Press down until the two surfaces are flush, then turn the camera unit in either direction to lock it in position.



⚠ Warning:

To avoid any damages or injuries, the device must be securely fastened to the floor/wall as specified in the installation instructions.

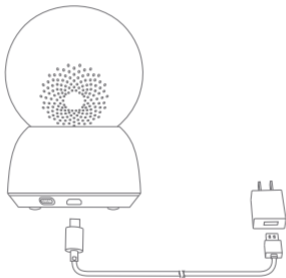
⚠ When mounting the security camera on a wall:

Please note that the wall must be able to support at least triple the product's total weight.

Product Instructions

• Turning the Device On

IMILAB Home Security Camera A1 will automatically activate once the power cable is inserted into the Micro-USB charging port.



1. If the indicator light is flashing orange, that means the device is activated successfully.
If you do not see a flashing orange light, please press and hold the Reset button to restart the device to enter pairing mode.
2. Once the IMILAB Home Security Camera A1 is turned on, please do not attempt to rotate its head by force. If the camera position is incorrect, adjustments can be made through the app.

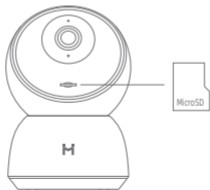
• Indicator Light

- Steady blue on: connected/device status is normal
- Flashing blue: network error
- Flashing orange rapidly: waiting for connection
- Flashing orange slowly: system upgrade in progress

• Installing a MicroSD Card

Make sure that the power to IMILAB Home Security Camera A1 is already disconnected. Adjust the camera lens upward until the MicroSD slot is revealed, then insert the MicroSD card into the slot (the side with contact points must be facing down).

Note: Please turn off the IMILAB Home Security Camera A1's power supply before inserting or removing the MicroSD card. Please use a genuine Micro SD card manufactured by a qualified supplier, with a reading/writing speed of no less than U1/Class 10. (Maximum support capacity is 64 GB)



• Restore Factory Settings

- Press and hold the Reset button to restore your device to factory settings.
- Data stored on the MicroSD card is not deleted.

Install Mi Home app

Connect with Mi Home/Xiaomi Home App. This product works with Mi Home/Xiaomi Home app. Control your device with Mi Home/Xiaomi Home app.

Scan the QR code to download and install the app. You will be directed to the connection setup page if the app is installed already. Or search "Mi Home/Xiaomi Home" in the app store to download and install it. Open Mi Home/Xiaomi Home app, tap "+" on the upper right, and then follow prompts to add your device.

The app is referred to as Xiaomi Home app in Europe (except for Russia). The name of the app displayed on your device should be taken as the default.



Note: The version of the app might have been updated, please follow the instructions based on the current app version.

Real-time Surveillance

Launch the Mi Home/Xiaomi Home app and select a IMILAB Home Security Camera A1 that is already connected to monitor the surroundings in real-time. The camera's control interface allows you to adjust the sharpness of the image, as well as to change the device's vertical and horizontal viewing angles.

Additional features such as screen capture or record and remote communications can also be performed.



Note:

The diagram is for reference only. Actual displays will vary based on different versions of the Mi Home/Xiaomi Home app and your smartphone model.

Supporting Infrared and Image-intensified Night Vision

The camera will automatically switch to night-vision mode based on changing light conditions. The 6 built-in infrared night vision lights increase the nightvision distance up to 10 meters, so the camera can clearly capture video in the dark.



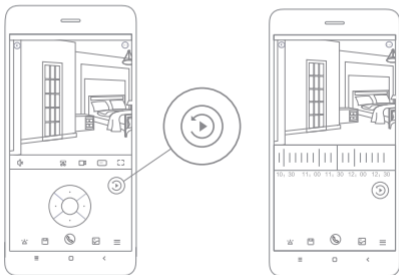
Infrared night vision mode sample

Note:

The diagram is for reference only. Actual displays will vary based on different versions of the Mi Home/Xiaomi Home app and your smartphone model.

Playback

IMILAB Home Security Camera A1's playback feature is only available after installing a compatible MicroSD card. Once a MicroSD card has been installed and the security camera is turned on, videos will be recorded automatically. After entering the user interface of the Playback feature, simply slide the bar on the timeline to select the time period you wish to view.

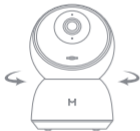


Note:

The diagram is for reference only. Actual displays will vary based on different versions of the Mi Home/Xiaomi Home app and your smartphone model.

Automatic Surveillance

- Home surveillance can be enabled or disabled in the Mi Home/Xiaomi Home app.
- Available options include 24-hour, daytime, and nighttime monitoring. You can also create your own schedule and set the desired camera angle.
- This product is able to detect movements within its field of view. Once movements are detected, a video is recorded and you will receive a notification.



Note:

The diagram is for reference only. Actual displays will vary based on different versions of the Mi Home/Xiaomi Home app and your smartphone model.

Shared Remote Viewing

Through the IMILAB Home Security Camera A1 control interface in the Mi Home app, you can set your security camera as a shared device under the general settings menu, and invite your friends to view the camera remotely.

Your friends will be required to download the Mi Home/Xiaomi Home app and log in with his/her Xiaomi account.



Note:

The diagram is for reference only. Actual displays will vary based on different versions of the Mi Home/Xiaomi Home app and your smartphone model.

Specifications

Name: IMILAB Home Security Camera A1

Model: CMSXJ19E

Net Weight: 211g

Lens Angle: 110°

Resolution: 2304x1296

Power input: 5 V --- 2 A

Expandable Memory: MicroSD card (up to 256GB)

Dimensions: 112 mm x 76 mm x 76 mm

Operating Temperature: -10 °C to 40 °C

Compatible With: Android 4.4 or iOS 9.0 or later

Wireless Connectivity: Wi-Fi IEEE 802.11 b/g/n 2.4GHz

FCC Statement

This device complies with Part 15 of the FCC Rules. Operation is subject to the following two conditions:

- (1) This device may not cause harmful interference, and
- (2) This device must accept any interference received, including interference that may cause undesired operation.

Attention that changes or modification not expressly approved by the party responsible for compliance could void the user's authority to operate the equipment.

Note: This product has been tested and found to comply with the limits for a Class B digital device, pursuant to Part 15 of the FCC Rules. These limits are designed to provide reasonable protection against harmful interference in a residential installation. This product generates, uses, and can radiate radio frequency energy and, if not installed and used in accordance with the instructions, may cause harmful interference to radio communications. However, there is no guarantee that interference will not occur in a particular installation. If this product does cause harmful interference to radio or television reception, which can be determined by turning the equipment off and on, the user is encouraged to try to correct the interference by one or more of the following measures:

- Reorient or relocate the receiving antenna.
- Increase the separation between the equipment and receiver.
- Connect the equipment into an outlet on a circuit different from that to which the receiver

is connected.

—Consult the dealer or an experienced radio/TV technician for help.

WEEE Disposal and Recycling Information



Correct Disposal of this product. This marking indicates that product should not be disposal with other household wastes throughout the EU. To prevent possible harm to the environment or human health from uncontrolled waste disposal, recycle it responsibly to promote the sustainable reuse of material resources. To return your used device, please use the return and collection systems or contact the retailer where the product was purchased. They can take this product for environment safe recycling.

Hereby, Shanghai Imilab Technology Co., Ltd. declares that the radio equipment type IMILAB Home Security Camera A1 is in compliance with Directive 2014/53/EU.



Manufacturer: Shanghai Imilab Technology Co., Ltd.
(a Mi Ecosystem Company)

Address: Room 908, No. 1, Lane 399, Shengxia Rd., China Pilot Free Trade Zone,
Shanghai, China 201210

For further information, please go to www.imilab.com.

Support: help@imilab.com

For Business: globamarketing@imilab.com